

2649 Far View Drive

Scotch Plains, New Jersey



Sue Adler
KELLER WILLIAMS
PREMIER PROPERTIES

sueadler 
THE #1 KELLER WILLIAMS TEAM IN NEW JERSEY team

Each Keller Williams office is independently owned and operated.





Welcome to 2649 Farview Drive, a one of a kind architect designed home nestled at the crest of a quiet cul de sac just minutes from the Watchung Mountain reservation. This immaculate 5200+ square foot, 3/4 bedroom, 2.5 bath contemporary home with traditional finishes boasts wonderful mountain vistas (that include NYC views in winter) and an open floor plan with lots of flexible space to tailor to your specific needs.

Enter the home through a unique, intricately hand carved oversized wood door into the sleek marble entry foyer where you catch your first glimpse of the spacious main level and a floor plan with excellent flow...this home is an entertainer's dream. Up three steps you'll find a grand Living Room with airy vaulted ceiling where a two-sided fireplace with floor-to-ceiling stone surround will surely become the focal point for an intimate gathering of friends or a grand holiday celebration. Here, light streams in through large picture windows that frame the breathtaking views outside. Continue on into the chef's dream Kitchen where you'll find custom cabinetry, high-end appliances, abundant counter space and natural light pouring in through striking arched window. What a fabulous place to prepare quick snacks to be enjoyed in the adjacent Breakfast Room or gourmet creations elegantly served in the neighboring Formal Dining Room. Your guests will be wowed by the view of the backyard greenery seen through a full windowed wall. The Butler's Pantry/Wet Bar in between the two rooms provides even more convenience while entertaining. Outside, the large dual octagonal, multi-level private rear deck is ideally suited for outdoor entertaining. Picture the space set with multiple tables and lounge chairs as you enjoy scrumptious hors d'oeuvres on one level and then proceed past the center garden to sit down for a relaxing dinner under the stars on the opposite side. It makes for an evening your guests will never forget!





Enjoy the home's casual spaces as you relax at the end of the day in the spacious Great Room equipped with a full compliment of built-in TV and audio equipment, or in the neighboring Den/ Office featuring custom cabinetry and a vaulted ceiling. It's the perfect place to cozy up with a book or simply finish up some paperwork. An elegant Powder Room and a tiled Laundry Room complete the first level living space.

When it's time to retire for the night, the unique staircase with tempered glass and oak railings leads you to the second floor landing overlooking the first level and provides access to 3 spacious bedrooms and 2 full baths. To the left, the private Master Suite boasts custom built-in cabinetry, abundant closet space and a luxurious en suite bath with double sink vanity, a makeup vanity, a marble tiled shower and separate commode. Two additional bedrooms, each with plenty of closet space, carpet and large windows, a full hall bath and extra storage closets round out the second level.

And there's more...the expansive lower level is home to a Wine Cellar that is sure to please any enthusiast and 2 unfinished spaces with glass block windows ideally suited for a home workshop, home gym, media room and so much more! The options are limitless with such a grand space.

With its breathtaking views and abundant interior space, 2649 Farview Drive is a private haven within minutes of world class amenities and access to NYC transportation. Whether used as a family home, or even a peaceful vacation retreat, this home is a gem!

Inside and Out...

First Level

- Entry Foyer with marble tile floor, hand carved wood door, Palladian window, decorative marble shelf, large coat closet, built-in stone and marble planter with oak trim; open to Living Room
- Living Room with vaulted 2-story ceiling, carpet, floor to ceiling gas stone fireplace (double sided for viewing from Kitchen) with wood mantel and stone hearth and remote control starter, ceiling fan, recessed lighting, 2 sconces, large picture window facing front yard and mountain vistas, 2 additional windows; step down access to Dining Room and views of staircase with tempered glass and oak handrailings
- Dining Room with carpet, crown molding, large double closet, recessed lighting, full windowed wall with sliding doors to rear deck; access to Bar/Butler's Pantry
- Bar/Butler's Pantry with burl wood laminate cabinets, smoked mirror backsplash, prep sink, under-cabinet lighting, china/crystal storage closet; access to Kitchen and Breakfast Room
- Kitchen with oak laminate floor, custom cabinetry with black laminate countertops and ceramic tile backsplash, center island with prep sink, pendant lights above and cabinets below, high end appliances including 1 GE profile 4-burner electric cooktop, 1 GE profile 5-burner electric cooktop (one in center island with downdraft exhaust), GE Profile double oven, GE Spacemaker microwave, KitchenAid dishwasher with matching cabinetry panel, Sub Zero refrigerator/freezer with matching cabinetry panel, stainless steel double sink with window and pendant light fixture above, built-in desk with cabinets below and book shelves above, perimeter light fixtures, ceiling fan; open to 2 sided fireplace and Breakfast Room with chair rail, casement windows with backyard views, chandelier
- Den with carpet, built-in cabinets, vaulted ceiling and recessed lights (potential to be used as first floor bedroom)
- Great Room with carpet, recessed lighting, crown molding, large picture window with mountain vistas, 3 additional windows with mini-blinds, built-in wall unit with TV and sound system including 7 speaker digital surround sound, 55" Pioneer Elite TV, Harmon Kardon AMP, 6 CD changer, Dolby cassette and mixer, Hitachi VHS, Toshiba DVD and Dish network satellite receiver (all included) and display shelving, built-in stone and marble planter with oak trim
- Powder Room with marble tile floor, vanity with Corian top and mirror and light fixture above and storage below, window with blinds, separate commode with storage cabinet and recessed lights
- Laundry Room with sheet vinyl floor, storage cabinets, hanging shelf

Second Level

- Gallery landing leading to 2 separate bedroom wings featuring oak and tempered glass railings overlooking first level living space, chandelier, 4 sconces, carpet, archway to storage closet, 2 linen closets

Second Level continued

- Master Bedroom Suite featuring arched entry, carpet, vaulted ceiling, ceiling fan, recessed lighting, full wall rosewood laminate built-in cabinets (including recessed blind storage) flanked by arched Palladian windows with mini-blinds, 4 double closets with mirrored bi-fold doors, linen closet, "peek-a-boo" shuttered window with first level view, 2 sconces, en suite bath featuring, carpet, Corian topped vanity with full mirrored wall above, recessed lighting, 2 linen/storage closets, separate make-up vanity with mirror and recessed light above, step down through dual pocket doors to window seat with upholstered cushion, marble tiled stall shower with glass door, bath product dispenser, 4 showerheads (hand held, jets and stationary) and built-in bench, separate commode
- Bedroom #2 with carpet, large walk-in closet, Palladian window and additional window, vaulted ceiling
- Bedroom #3 with vaulted ceiling, 2 closets, large picture window overlooking backyard
- Hall Bath with marble tile floor, Corian vanity with mirror above and storage below, tiled stall shower, 2 sconces

Lower Level

- Wine cellar with 2300 bottle capacity, recessed lighting, wine themed décor
- Expansive unfinished professional workshop/storage/game room areas
- Utility Room with sink

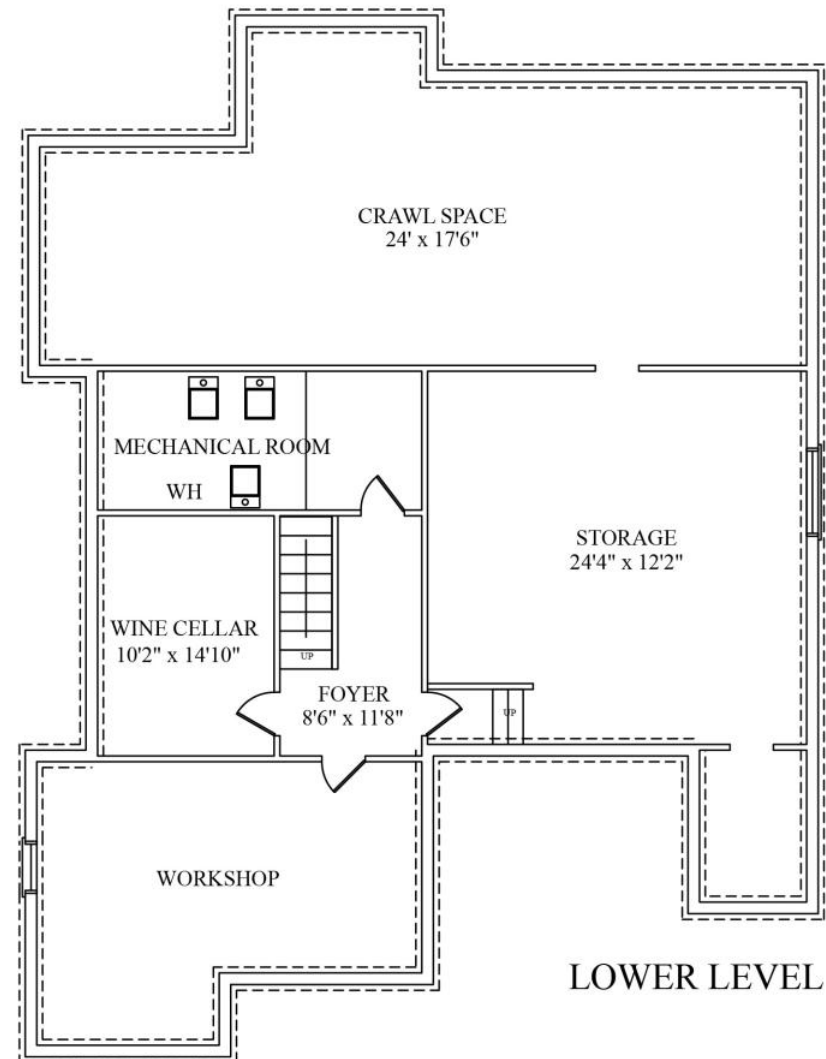
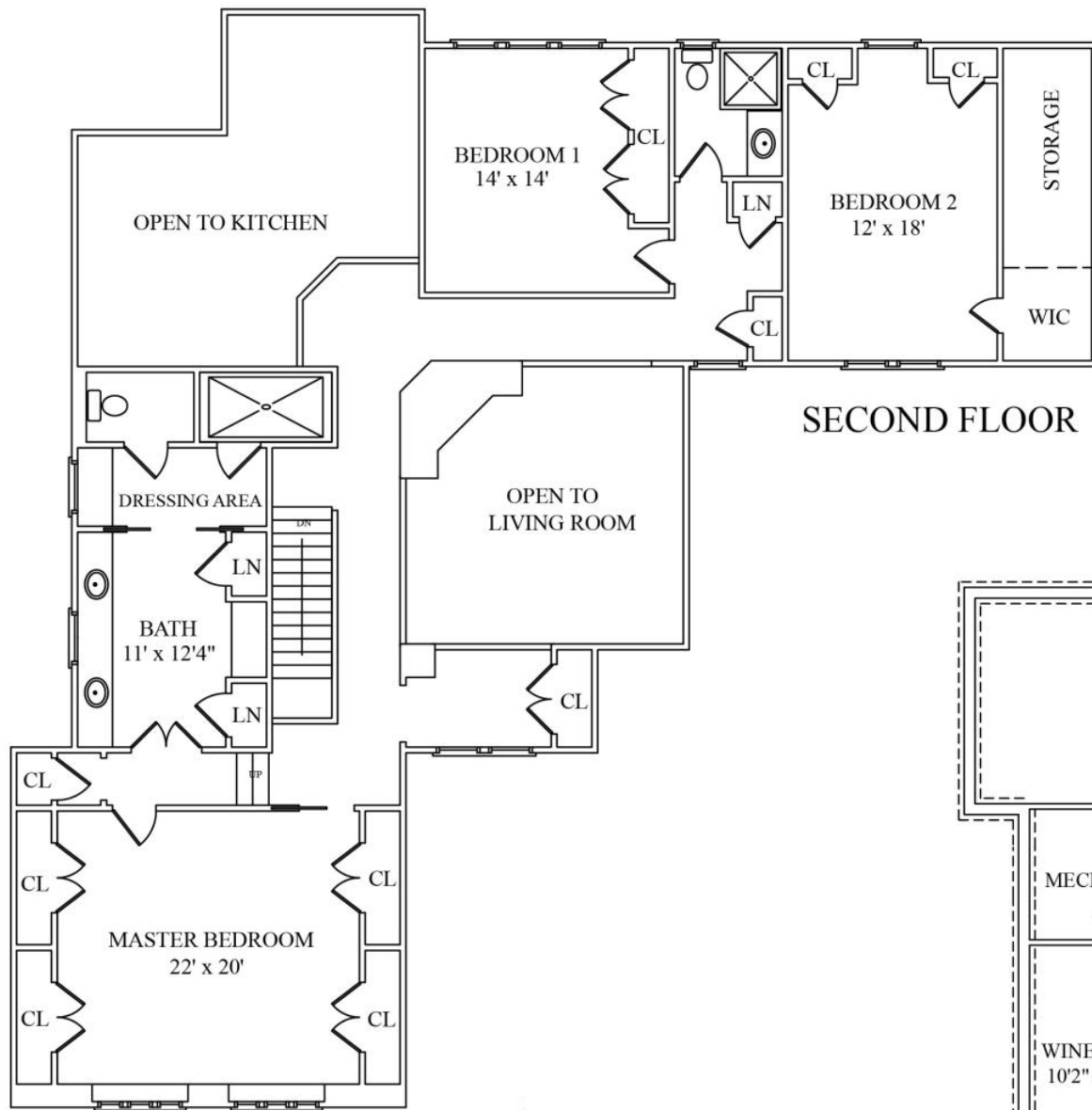
Additional Features

- Professionally landscaped and illuminated ½ acre property with spectacular vista views (NYC in winter), curved stone retaining walls in front of property, expansive multi-level octagonal 1800 square foot cedar deck with center garden, accent lighting and high end stainless steel gas grill with work area
- Oversized 2 ½ car garage with 9' wide electric doors and deck storage room; extra wide granite curbed macadam driveway
- 3-zone high efficiency Carrier central heating and air conditioning with high efficiency air filtration on all HVAC units, digital automatic thermostats, automatic Aprilaire humidification on all HVAC units
- Screen guards on all gutters
- Anderson casement double insulated windows with low "E" reflective coating
- Front and rear digital door chimes
- Electrolux central vacuum system
- Central security alarm protection system
- Centrally wired smoke detection/alarm system with battery backup
- 6" high profile baseboard throughout
- High end imported European Kitchler lighting fixtures throughout with dimmer lighting controls in most rooms
- Window treatments included on all windows
- In excess of 100 lineal feet of closets with wire shelving and automatic light fixtures for extensive storage
- Grohe and Kohler plumbing fixtures



Cell: (973) 975-0197
Office: (973) 376-0033 x101
Sue@sueadler.com
www.sueadler.com/2649FarView

Sue Adler
KELLER WILLIAMS
PREMIER PROPERTIES



NOT TO SCALE - This floor plan is provided for illustration purposes only.
Room positions and dimensions are approximate and should be independently measured for accuracy.



Sue Adler
KELLER WILLIAMS
PREMIER PROPERTIES



Cell: (973) 975-0197
Office: (973) 376-0033 x101
Sue@sueadler.com
www.sueadler.com/2649FarView

sueadler 
THE #1 KELLER WILLIAMS TEAM IN NEW JERSEY **team**