



7 MANOR HILL ROAD
SUMMIT, NJ



Welcome to 7 Manor Hill Road in Summit, one of the last original Manor houses on this street in sought-after Summit. Built in 1937, this home has all the old-world charm with the modern amenities for today's family. Drive up to the stunning home with stone façade, mature landscaping and immediately fall in love. This five spacious bedrooms, 3.5 bath home has a perfect flow for entertaining and family fun. Natural light pours into each room of this lovingly maintained, spacious home that you won't want to miss! Walk up the flagstone pathway and enter into the bright foyer. Find yourself a cozy spot in the expansive living room with vaulted ceilings, original wood exposed beams, and tasteful white wood panel designed walls.

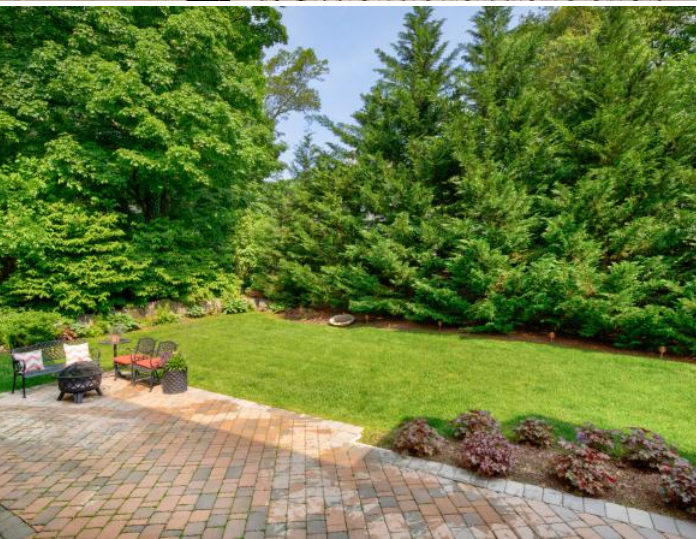


A wood fireplace with custom stone façade, a large bay window bench, and gleaming hardwood floors will make you not want to leave this room! The family room has tons of light pouring through the walls of windows. Access to the patio can also be found here for entertaining. Flow into the Gourmet Kitchen complete with a large center island featuring a NEW marble countertop and loads of storage. Hardwood floors, stainless steel appliances, and lots of beautiful crisp white cabinets further enhance this space. Enjoy doing homework or a zoom meeting from the desk area in the kitchen with a view of the expansive backyard. Step through a glass door to the three-season porch that has three walls of exposure. A great place for your family to share a meal together or have a cup of coffee and watch the sun rise. The sophisticated dining room is ready for you to host the holidays with a detailed chair rail design and light pouring in through the windows.



Privacy abounds in the large first floor master suite. Lots of natural light and closet space can be found here. The en suite bath has two pedestal sinks, a tub and shower with glass doors. This bath can also be accessed from the hallway. The hallway has a pull-down attic stairway offering additional storage. A second bedroom is steeped in sunlight and has lots of potential for storage. A tasteful powder room rounds out the first floor.

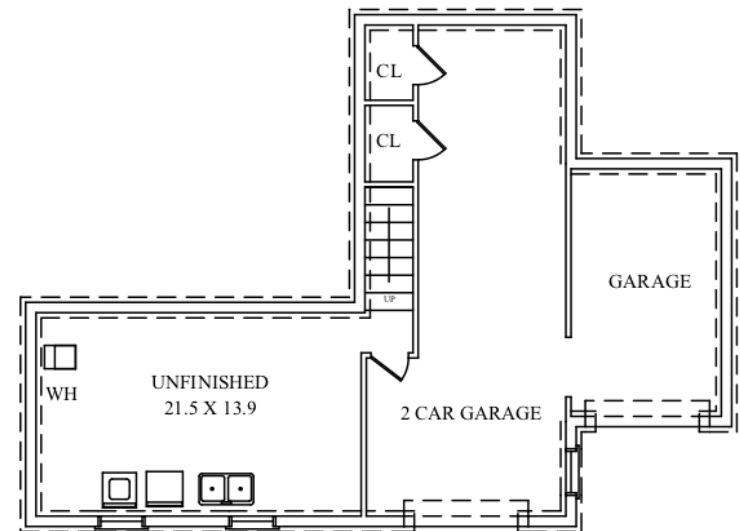
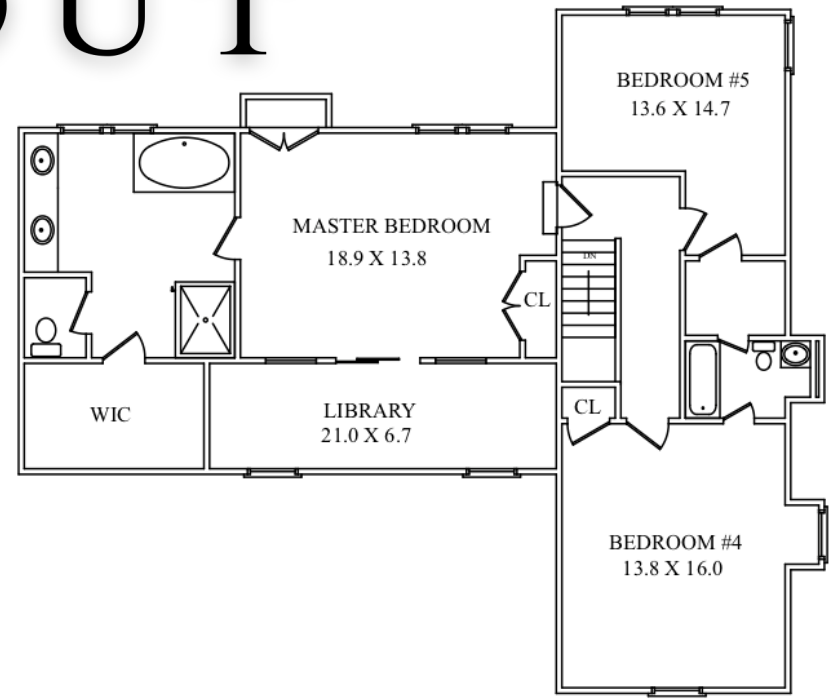
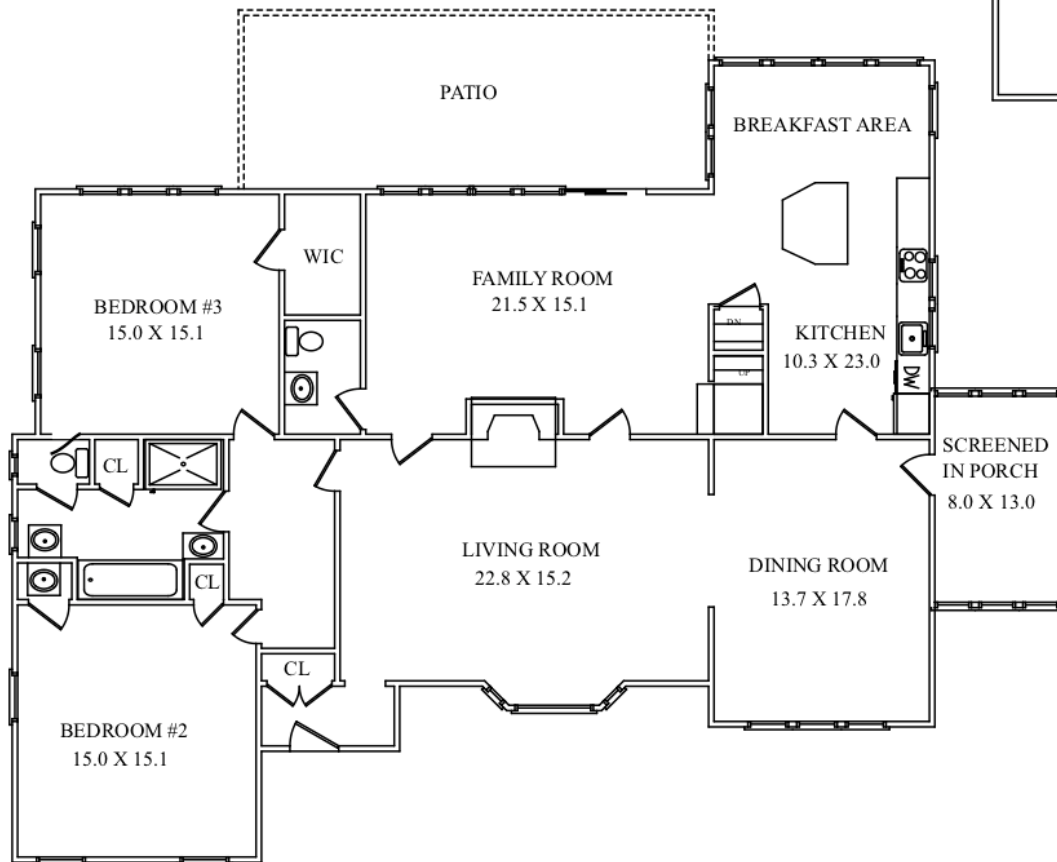
When you are ready to retire for the night, head up the staircase to the second floor's skylit foyer. Step up into the Master Bedroom with high ceilings, a library loft area, and double French doors to the Juliette balcony overlooking the lush backyard. Ample closet space and unique features to make it the room of your dreams. Enjoy a soak in the whirlpool tub in the awe-inspiring Master Bathroom complete with a double vanity, marble countertops, huge shower with rain showerhead and bench. The amazing walk-in closet completes this heavenly bathroom. An additional two bedrooms share a Jack and Jill full bathroom.



The Lower level offers additional storage, a laundry area and access to the two and a half-car garage. The garage has an electric car charging station, whole house generator, two closets for additional storage, bike hooks and shelving. The backyard is perfect for entertaining and family fun complete with an expansive patio large enough for dining and relaxing and space for a playground. Privacy trees line the property in back and on the side creating your own private oasis.

7 Manor Hill is an impeccable home with bright, expansive rooms, unique details and vast amounts of storage space! This house is not to be missed!

INSIDE & OUT



NOT TO SCALE - This floor plan is provided for illustration purposes only.
Room positions and dimensions are approximate and should be independently measured for accuracy

FIRST LEVEL

- Entry Foyer featuring double closet, flush-mount lighting, mail slot, tile floor, crown and baseboard molding
- Living Room featuring vaulted ceiling with exposed original wood beams, large bay window, window bench, hard wood floors, wood panel decorative walls, wood burning fireplace, stone hearth, wrought iron chandelier, sconce lighting, crown and baseboard molding, access to first floor Bedrooms, Family Room and Dining Room
- Powder Room featuring floating sink, recessed lighting, hardwood floors
- Family Room featuring four large windows with shades, hardwood floors, recessed lighting, sliding door leading to deck, crown and baseboard molding, staircase to second level
- Kitchen featuring nine windows, large island with marble countertop, stainless steel appliances, two hanging lights, recessed lighting, hardwood floors, white cabinets, glass tile backsplash, single French door to dining room, access to lower level
- Three season porch featuring tile floor and nine large windows
- Dining room featuring four windows, chair rail design, wainscoting design, hanging chandelier, two sconces, crown and baseboard molding
- Bedroom #1 with en-suite bathroom featuring three windows, one-walk in closet, carpeted floors, flush mount lighting, baseboard molding, bathroom featuring separate tub, shower with glass door, two single pedestals sinks, subway tile design on walls, marble floor, one window, water closet
- Bedroom #2 featuring three windows, one closet, hardwood floors, flush mount lighting, crown and baseboard molding

SECOND LEVEL

- Foyer featuring skylight, recessed lighting, carpeted floors, baseboard molding
- Master Bedroom featuring four windows, double closet, recessed lighting, French doors opening up to a Juliette balcony
- Master bathroom featuring jacuzzi tub, double sinks and vanity, large shower with bench, glass doors, two windows, medicine cabinet, walk-in closet, tile floor, recessed lighting, baseboard molding
- Bedroom #1 featuring four windows, flush mount lighting, access to hallway bath, carpeted floors, baseboard molding
- Bedroom #2 featuring two windows, flush mount lighting, one closet, baseboard molding
- Full bathroom featuring tub/shower, one window, sink with floating vanity, sconce lighting, marble floor, baseboard molding

LOWER LEVEL

- Featuring carpeted stairs case, washer, dryer, two slips sinks, two windows, carpeted floors, utility access, garage access
- Garage featuring two car garage space, cement floors, two closets, bike hooks

EXTERIOR

- Irrigation system
- Flat back yard
- Mature landscaping
- Privacy trees in the backyard and side yard
- Deck and paver patio

UPGRADES

- Remodel in (2012-2013)
- Renovated Kitchen and Family Room to create open concept
- New 36" Gas Oven and Stove

- New Marble Island
- Added Master Bedroom, Master Bath, and 5th bedroom upstairs
- Added garage under screened porch
- Added split-mini A/C units in Family Room, Master, Master Bath, 5th Bedroom
- Cat-5 Ethernet cabling to most of the house
- Stone Patio in back
- New high-efficiency Furnace and A/C in basement (2020)
- Added Emergency Generator feeding whole house (2012)
- Added Electric Car Charger (2012)
- Added whole house surge protection in (2012)
- Added Irrigation system (2014)
- Added professional landscape lighting in front of house (2016)
- FiOS Gigabit Internet access, Smart home lighting
- Smart thermostat with individual room sensors (2018)
- Added Hot water recirculation pump added (2018)
- Added Whole house emergency water shutoff system added (2019)
- Added 35 Gallon per day whole house electrode steam humidifier (2018)
- Added 90 pint per day de-humidifier (2015)
- New Water Heater (2018)
- New Washing Machine (2018)
- New Gas Dryer (2019)





sueadler 
THE #1 KELLER WILLIAMS TEAM IN NEW JERSEY **team**

CELL: 973.936.9129
OFFICE: 973.376.0033 x101
EMAIL: info@sueadler.com
sueadler.com/7ManorHill

kw PREMIER
PROPERTIES
KELLERWILLIAMS®