



146 MAPLE STREET | SUMMIT





Drive up to 146 Maple Street and you know you have arrived somewhere special. Crisp landscaping, charming shutters and a charming white fence all contribute to this home's curb appeal. This pristine 4 Bedroom, 2 Bath home is in the heart of Summit's coveted Brayton Elementary neighborhood, walking distance to the Middle School, Memorial Field, downtown Summit restaurants/shopping and the Midtown Direct Train.

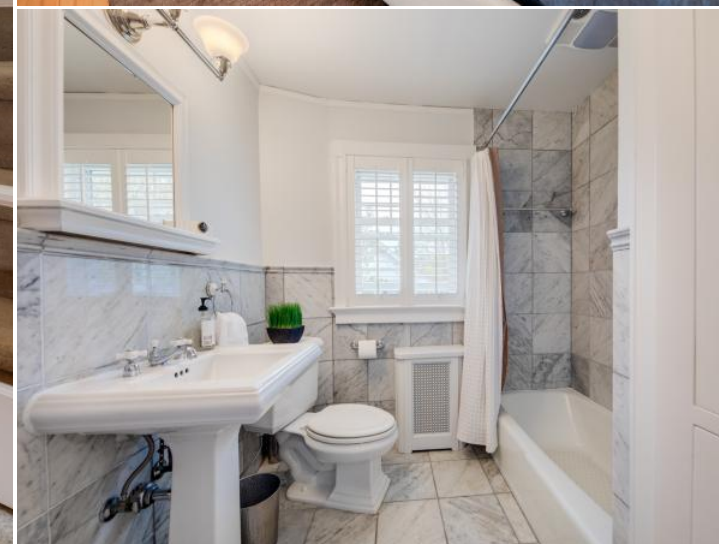
Walk up the elegant walkway and enter through the sun-drenched vestibule. Imagine gatherings or curling up with a book in the elegant Living Room where light literally pours in through ten windows with white plantation shutters.





The updated Kitchen will impress on every level with custom storage so that everything is neatly tucked away. Quartz countertops, top of the line stainless appliances (Wolf, Bosch and Dacor) and a functional breakfast bar with seating for two. Access to the lush manicured back yard with a trek deck and playground. Al fresco dining or summer entertaining, the backyard exudes complete relaxation. A two car, detached garage supplies extra storage and completes this amazing outdoor space. Back in the home, don't miss the new full bathroom off of the Kitchen with stunning Calacatta marble throughout.





Ready to retire for the evening? The Second Level boasts three spacious bedrooms with closets and gleaming hardwood floors. The Full Hall Bath glows with a crisp white pedestal sink, and Calacatta tile throughout. For the utmost privacy walk up to the third floor for fourth bedroom . This Bedroom is complimented by three skylights and storage throughout.

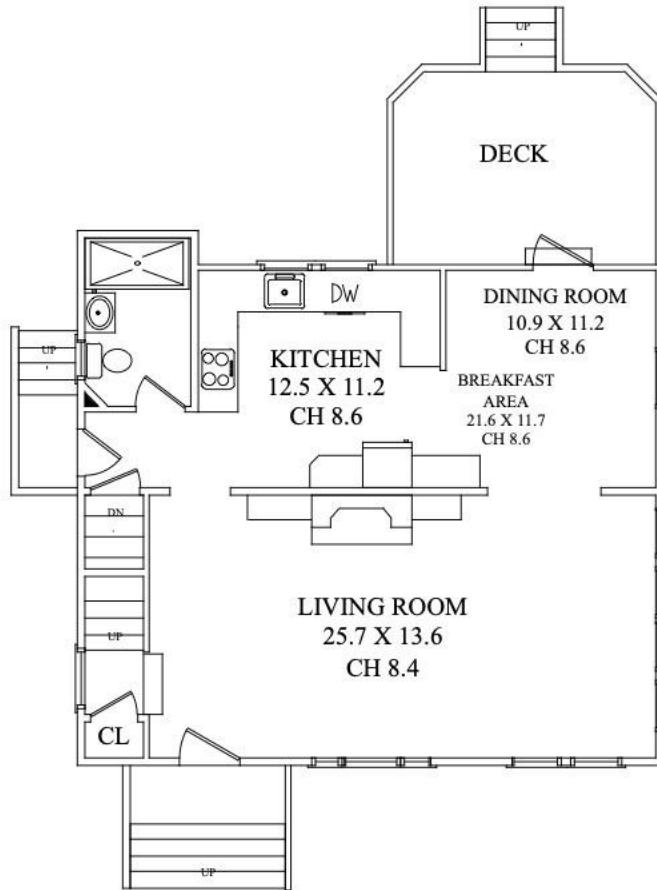
And that's not all! The large Lower Level provides plenty of additional living space with a sizable Recreation Room/Playroom perfect for movie watching or game night. A Laundry Room with washer, dryer and additional storage makes doing laundry an absolute pleasure. Simply put, the Lower Level adds tremendous cheery and functional space to the home.

With its prestigious neighborhood, close proximity to Midtown Direct Train, top-notch schools and convenience to Summit's fantastic shopping/restaurants, 146 Maple is a fantastic value that won't last!

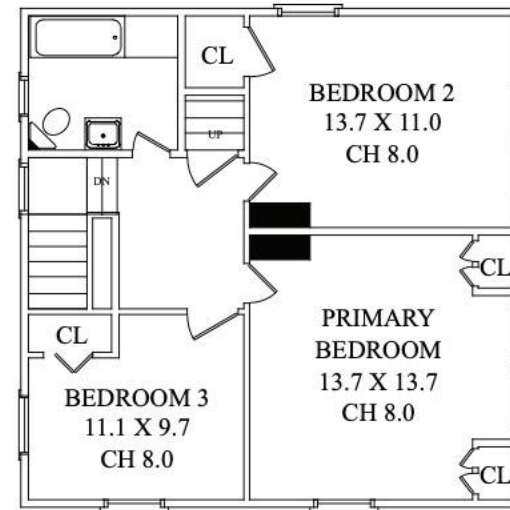
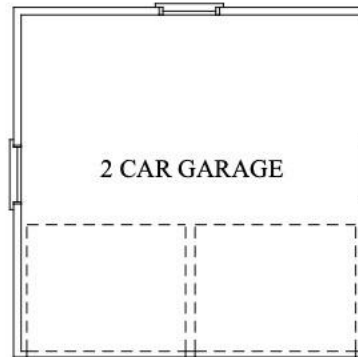




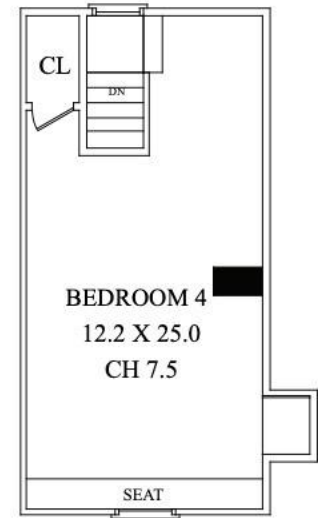
# THE FLOORPLAN



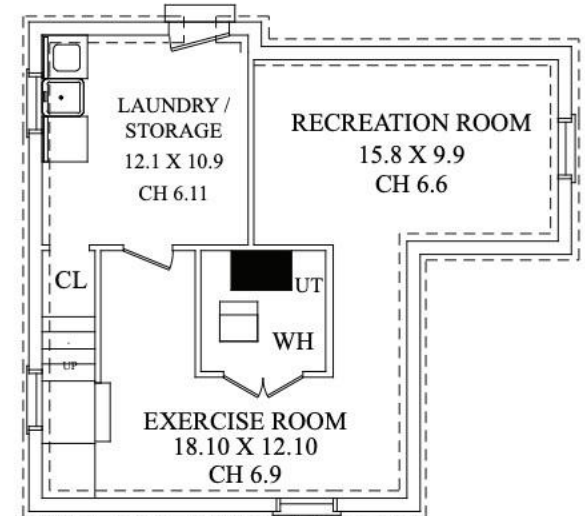
FIRST LEVEL



SECOND LEVEL



THIRD LEVEL



LOWER LEVEL

# INSIDE & OUT

## First Level

- Living Room featuring gas burning fireplace, white custom built-ins with shelves and cabinets, hardwood floors, 10 windows with white plantation shutters, baseboard molding, modern light fixture, crown molding
- Kitchen featuring hardwood floors, three windows, access to back yard, hanging modern lighting, one hanging light over the sink, desk area, white cabinets, Wolf stove, Bosch Dishwasher, Dacor white paneled refrigerator and freezer, decorative shelf, Calacatta marble backsplash, quartz countertops, recessed lighting
- Back Foyer featuring access to lower level, access to side of house and Full Bath
- Full Bathroom featuring Calacatta marble floor, one window, medicine cabinets, sink and white vanity, shower with glass door, white subway tile, flush mount lighting

## Second Level

- Bedroom #1 featuring two windows, hardwood floors, one single closet, one light fixture, crown molding, baseboard molding
- Bedroom #2 featuring hardwood floors, two single closets, three windows, light fixture, crown molding, baseboard molding
- Bedroom #3 featuring hardwood floors, three windows, Swarovski Crystal chandelier, one closet, crown molding, baseboard molding
- Full Hallway Bathroom featuring Calacatta marble floors, pedestal sink, linen closet, Calacatta Marble tile on walls, tub/shower with Calacatta marble tiles

## Third Level

- Bedroom #4 featuring carpeted floors, three skylights, one window, flush-mount lighting, built-in shelves and drawers, baseboard molding

## Lower Level

- Recreation Room with carpeted floor, one window, utility access
- Bonus space for home gym
- Laundry Room featuring washer, dryer, slop sink, refrigerator and freezer, wine refrigerator

## Outside

- Two Car detached garage
- Fenced in front yard and back yard
- Playground
- Trex deck
- Mature landscaping
- Retaining wall in the front
- Retaining wall in the back yard

## Upgrades

- New HVAC- internal coil- 2019
- New Dishwasher- 2020
- New Boiler- 2020
- New Runner on main staircase- 2019
- New carpet going down to lower level -2019
- Enclosed front yard fence-2020
- Interior freshly painted





CELL: 973.936.9129

OFFICE: 973.376.0033 x101

EMAIL: [info@sueadler.com](mailto:info@sueadler.com)

[sueadler.com/146Maple](http://sueadler.com/146Maple)

**sueadler**  **team**  
THE #1 KELLER WILLIAMS TEAM IN NEW JERSEY

**kw** PREMIER  
PROPERTIES  
KELLERWILLIAMS.