



2 WOODCROFT ROAD  

---

SUMMIT, NJ



Welcome to 2 Woodcroft Road! Located on a perfectly landscaped spacious corner lot in Summit's prestigious Northside, this picture perfect center hall colonial absolutely dazzles. Boasting 5 Bedrooms and 3.5 Baths, this home exudes relaxation, charm and incredible renovations. Close to Midtown Direct train, excellent restaurants, shopping and Summit's top-notch schools (Lincoln-Hubbard Elementary), this home checks each and every box.

Drive through this prestigious Northside neighborhood and when you arrive, take in the timeless elegance of this home. The charming picket fence, exquisite plantings and clapboard exterior with classic shutters and a magical bluestone walkway all contribute to this home's outstanding curb appeal. Stroll up to the impressive front door and enter the elegant Entry Foyer. The curved original staircase with its original railing, balusters and decorative side brackets will simply take your breath away. The sun-drenched Living Room, complete with a stunning statement fireplace, includes custom built-ins perfect for Studio McGee styling!



Flow easily through beautiful double French doors into the bright and spacious SunRoom/Office complete with windows at three exposures, skylights and beautiful views of the gardens beyond. There is simply no better venue for working from home. Dinner parties are divine in the elegant formal Dining room complete with a striking lantern, its own wood burning fireplace and plenty of room for a large table. Two original china cabinets are the ideal spot to display your glassware and dishes. The Dining Room opens seamlessly into the fully renovated Gourmet Chef's Kitchen that will impress any chef.





Crisp white Omega cabinetry, top of the line stainless steel appliances, quartz countertops, a Breakfast Bar, an Island and a serene Breakfast Area under skylights, are the best in form and function. The Kitchen opens up to the sundrenched Family Room that includes a gas fireplace and sleek custom built-ins. Got backpacks and jackets? No problem when you have a fabulous MudRoom with tons of built in storage. An on-trend renovated Powder Room rounds out the First Level.



Another showstopper of 2 Woodcroft is the exquisite property meticulously planted and maintained. Lush green spaces, blooming specimen trees, crisp hedges and abundant perennial gardens radiate absolute serenity. A Bluestone Patio, encased by more blooming gardens, makes entertaining family and friends outdoors delightful.



Ready to retire for the evening? The bright and sunny Primary Bedroom Suite is sure to be your own private oasis and getting ready for the evening is pure bliss in the spa-like Master Bathroom. Bedroom 2 includes a fabulous Built In Desk Area great for an aspiring student or take this bedroom as your own office. Sundrenched Bedrooms 2 and 3 include roomy closets and share the chic Hallway Bathroom complete with a NEW vanity with quartz countertop and cheery tile. Prepare to be wowed by the Third Floor with an open and airy Play Room/Teen Lounge with large skylights and custom built ins. Bedrooms 4 and 5 are sunny and bright and include plenty of closet space. A tasteful Full Bath, with its own jacuzzi tub, rounds out the Third Level.

And there's more . . . The Lower Level, with a fantastic Recreation Room/Exercise Room with chic NEW wood look flooring and built-ins, will provide endless hours of family entertainment. Equipped with plenty of room for movie watching and play, the lower level adds plenty of additional functional space to the home. A large Utility/Storage Room with tons of storage, a Cedar Closet, a spacious Laundry Area and a 2 Car Garage with stunning carriage style doors round out the Lower Level.

With its proximity to Lincoln-Hubbard Elementary, New York City, easy access to Midtown Direct train service and convenience to fantastic shopping and restaurants in downtown Summit, you will undoubtedly want to call 2 Woodcroft Road home.

# I N S I D E & O U T

## First Level

- Entry Foyer featuring original wood door, hardwood floors, curved staircase to Second Level with original railing, balusters and decorative side brackets, crown molding, baseboard molding, flush mount light fixture, Rear Hallway with Coat Closet and Storage Closet, door to Lower Level
- Living Room featuring wood burning fireplace with custom millwork mantle with dentil molding and stone surround, custom floor to ceiling built in shelves, French doors to SunRoom/Office, recessed lighting, hardwood floors, crown molding, baseboard molding, oversized windows at 2 exposures with wood blinds
- Dining Room featuring fireplace with decorative custom millwork mantle and brick surround, wainscoting, 2 original corner china cabinets with glass doors, hardwood floors, decorative ceiling medallion, pendant lantern, crown molding, oversized windows at 2 exposures with wood blinds
- RENOVATED Gourmet Chef's Kitchen featuring crisp white Omega custom wood cabinetry including glass door cabinetry, quartz countertops, subway tile backsplash, island with seating, Breakfast Bar with seating for 3, Wolf stainless 4-burner oven/range with griddle, Wolf stainless hood, GE Profile stainless dishwasher, Whirlpool stainless refrigerator/freezer, GE Profile stainless built in microwave, all appliances NEW 2018, hardwood floors, recessed lighting, Breakfast Area with built in seat and large skylight
- Rear Entrance featuring beadboard wainscoting, Pantry with floor to ceiling shelving, sliding French door to Bluestone Patio, 2nd French door to NEW wood staircase leading to driveway, recessed lighting
- Family Room fully open to Kitchen Area featuring gas fireplace with custom millwork mantle and brick surround, custom built ins with concealed and media storage, carpeting, recessed lighting, windows with blinds at 3 exposures, crown molding with dentil detail, baseboard molding
- RENOVATED Mud Room featuring tile flooring, custom built in storage, oversized window, semi-pendant light fixture, baseboard molding
- SunRoom/Office featuring windows at 3 exposures, 2 skylights with shades, baseboard heat, sisal carpet, French door to side yard, paneled walls, recessed lighting, baseboard molding, crown molding
- RENOVATED Powder Room featuring tile flooring, vanity with beadboard detail and granite countertop, glass shelf, tile wainscoting, 2 light sconce, custom roman shade

## Second Level

- Staircase with designer runner to Second Level
- Second Level Landing featuring hardwood floors, designer runner, flush mount light fixture, baseboard molding, crown molding, oversized window with blinds, recessed lighting
- Primary Bedroom Suite featuring carpeting, custom built in window seat with storage, NEW (2018) custom window seat cushion, 2 Closets with custom storage, windows with NEW (2018) custom window treatments at 3 exposures, 2 wall sconces, baseboard molding, crown molding
- Primary Bathroom featuring marble floor tile, custom floating double vanity with granite countertop, frameless glass door shower with marble tile, oversized window with custom wood blinds, recessed lighting, fan
- Full Hall Bath featuring NEW (2018) vanity with quartz countertop, medicine cabinet, tub/shower combination with tile surround, cheery blue floor tile, 2 light sconce, towel shelf
- Bedroom 2 featuring custom built in Desk Area with open and concealed storage, 2 Closets with custom storage, hardwood floors, flush mount light fixture, baseboard molding, crown molding, oversized windows with blinds at 2 exposures
- Bedroom 3 featuring wallpaper, hardwood floors, Closet, oversized windows with blinds at 2 exposures, recessed lighting

## Third Level

- NEW (2018) carpeted staircase to Third Level
- Teen Lounge/Recreation Room featuring NEW (2018) flooring, NEW (2018) custom built in bookshelves, vaulted ceiling with skylights with shades, wallpaper, original arched windows, track lighting, light fixture with drum shade, baseboard molding
- Bedroom 4 featuring vaulted ceiling, flush mount light fixture with drum shade, carpeting, oversized windows with blind, original arched window, baseboard molding, Closet with custom storage
- Bedroom 5 featuring wallpaper, carpeting, baseboard molding, crown molding, flush mount light fixture with drum shade, Closet with custom storage, oversized windows with blinds at 2 exposures
- Full Hall Bath featuring beadboard wainscoting, tile flooring, pedestal sink, jacuzzi tub/shower combination with tile surround including decorative tile band, storage shelf in shower, fan/light, 2 sconces, recessed light, plantation shutters

## Lower Level

- Staircase with runner (NEW 2018) to Lower Level
- NEW flooring (NEW 2018)
- Recreation Room featuring wall to wall custom built in with open and concealed storage (freshly painted 2018), baseboard molding, flush mount light fixture, Storage Closet
- Cedar Closet
- Utility/Storage Room with wine refrigerator (NEW 2018), Whirlpool refrigerator/freezer, built in shelving for storage, under stair storage
- Laundry Area featuring 2 original sinks, Maytag Bravos XL washer and dryer (NEW 2018), door to Garage
- 2 Car Garage with carriage style electric doors, storage

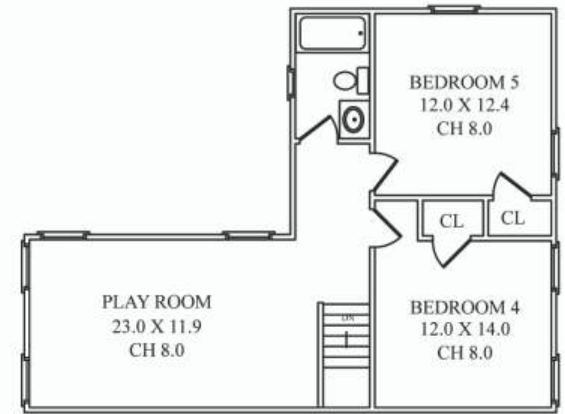
## Front/Backyard

- HUGE corner lot with immense privacy
- Flat fully fenced in property with foundation plantings, blooming perennials and blooming trees
- Front picket fence (NEW 2019)
- Stone retaining walls with landscaped beds
- Bluestone front walkway
- Bluestone Patio
- Bluestone steps to SunRoom
- NEW (2020) wood staircase from back door to driveway
- Driveway with parking area for 2 cars
- Irrigation System

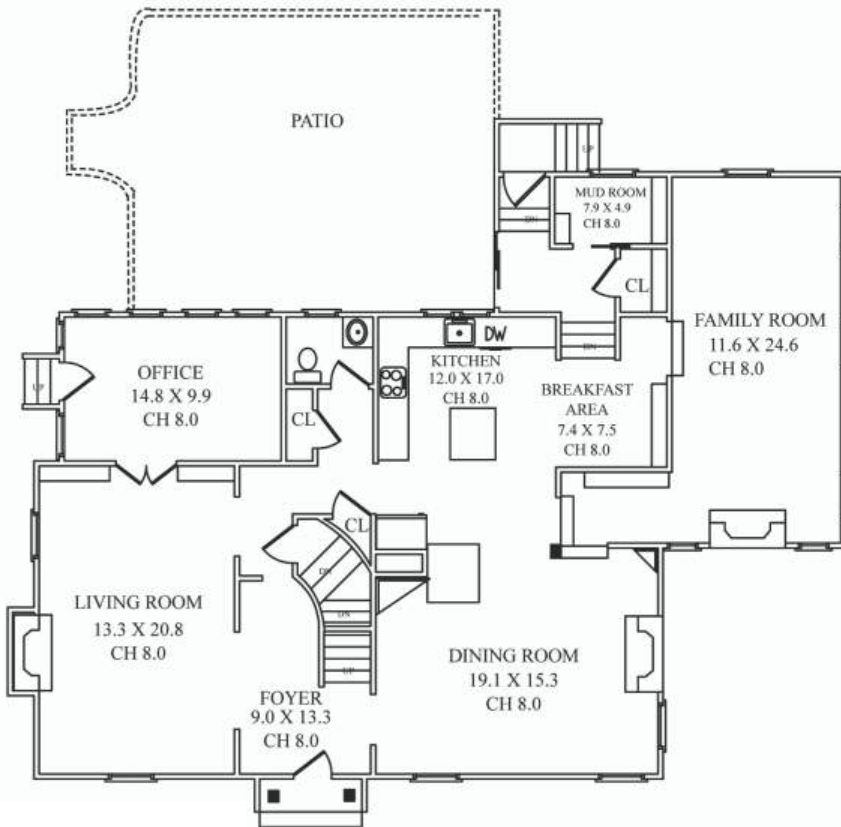
## Additional Features/Upgrades

- Freshly painted throughout (2018)
- NEW whole house Generator (Jan. 2021, with 1 year contract)
- NEW Water Heater (2018)
- HVAC, 3 zones
- NEW blower and motor for heating system (2021)
- NEST thermostats throughout
- 2 NEST cameras on 3rd level
- Slate Roof
- Hunter Douglas blinds throughout
- Hardwood floors refinished throughout

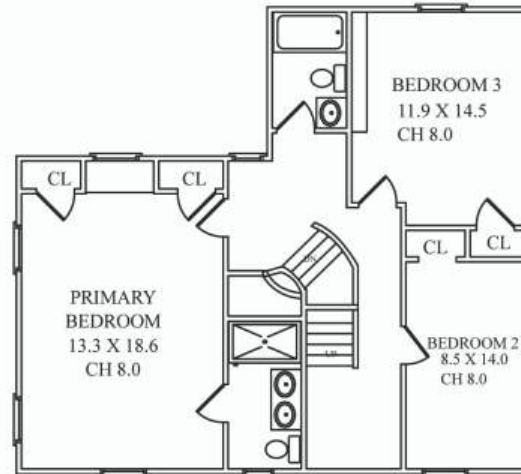
# THE FLOORPLAN



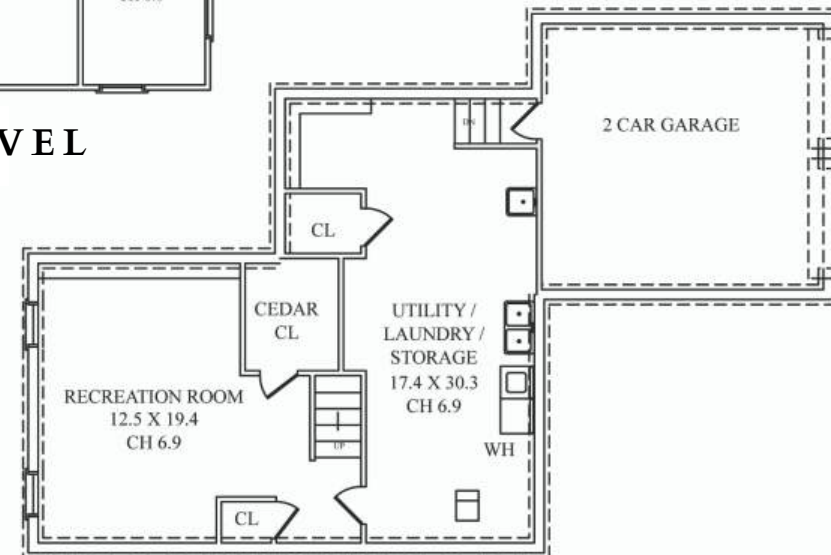
THIRD LEVEL



FIRST LEVEL



SECOND LEVEL



LOWER LEVEL



**sueadler**   
THE #1 KELLER WILLIAMS TEAM IN NEW JERSEY **team**

CELL: 973.936.9129  
OFFICE: 973.376.0033 x101  
EMAIL: [info@sueadler.com](mailto:info@sueadler.com)  
[sueadler.com/2Woodcroft](http://sueadler.com/2Woodcroft)

**kw** PREMIER  
PROPERTIES  
KELLERWILLIAMS.