



28 SPRING RIDGE DRIVE

BERKELEY HEIGHTS, NJ

Welcome to 28 Spring Ridge Drive! Nestled in one of Berkeley Heights' most prestigious neighborhoods, you'll find this stunning 4 Bedroom, 3 Bath home that checks each and every box. Out of this world renovations, incredible designer touches, an open and airy floor plan and idyllic property are just a few of this home's incredible highlights. With close proximity to Thomas Hughes Elementary, Columbia Middle School, a vibrant downtown area and easy access to Route 78 and New York City Train, this home is the perfect place to call home.

Drive down the tree lined street and take in the sprawling front lawn with NEW sod and crisp, manicured landscaping. A brick front walkway, stately shutters and a cheery yellow front door all make for delightful curb appeal. Enter through the Entry Vestibule and make your way to the Pinterest Perfect Living Room that includes a stunning fireplace flanked by marble herringbone tile, sleek white built ins and a huge picture window where the light pours in. A cozy Dining Room off of the Living Room, with a huge bay window and built in charming corner cabinet. Any chef is sure to be impressed with the Magazine Worthy and completely renovated Gourmet Chef's Kitchen. A rustic brick fireplace, crisp white shaker cabinetry, quartz countertops, LG Studio high-end stainless steel appliances and a huge island are the best in design, form and function. Hosting a dinner party? The open and airy Eat-In Kitchen is the perfect spot to entertain your guests with fireside dinners. The Eat-In Kitchen opens to the magical Sun Porch where you will have hours of peace and quiet enjoying cocktails, reading a book or simply looking out at the parklike property. Take a few steps down and get ready to host next year's Super Bowl Party in the BEST Family Room around. Rustic exposed beams and shiplap walls give this room a modern farmhouse feel. A Custom Wet Bar, with built in cabinetry and tons of storage, makes fixing drinks for your guests a snap. The Family Room opens up to the outdoors to make indoor/outdoor entertaining seamless. A tasteful Full Bath is located directly off of the Family Room. Finally, conveniently located First Floor Laundry rounds out the First Level.







When it's time to retire for the evening, walk up the staircase to the Second Level to find 3 spacious bedrooms that are steeped in sunlight and include gleaming hardwood floors and plenty of closet space. An out of this world Full Hall Bathroom dazzles with cool hexagonal tile, bead board wainscoting and sleek white subway tile. Walk up a few stairs where luxury abounds in the private and light filled Primary Bedroom Suite with tons of closet space and a spa-like bath that really wows. The vaulted ceiling with a sky light ensures that the bathroom glows with natural light. Two Custom Vanities with marble countertops, a make-up area and plenty of storage make this space sublime.

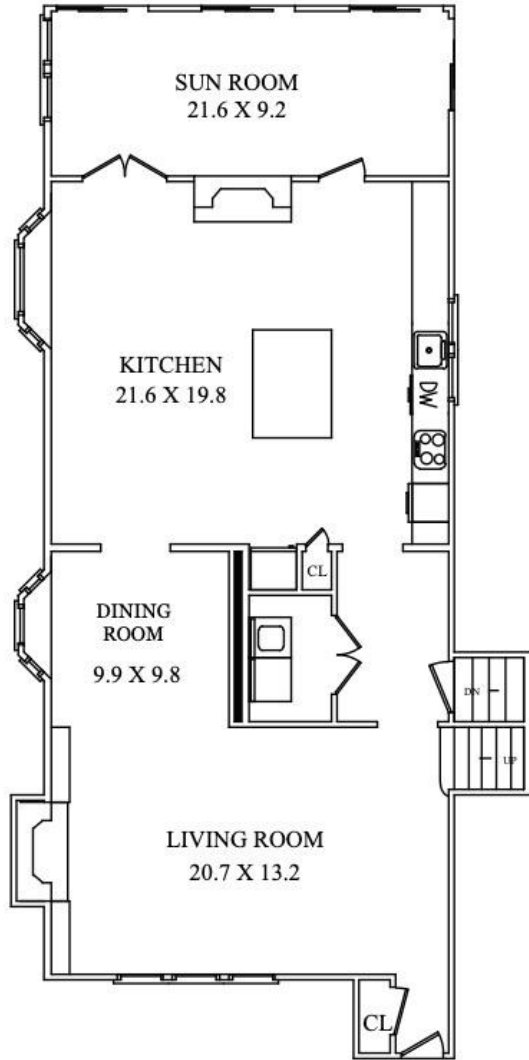




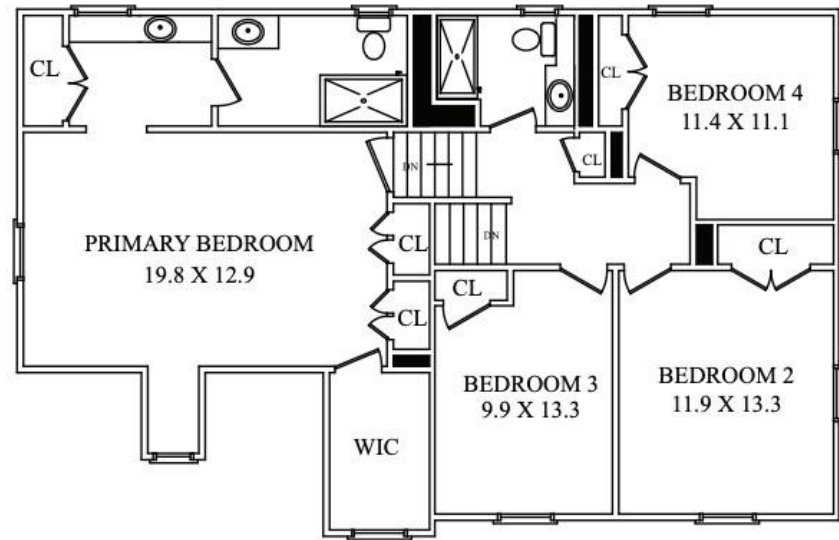
Another show stopper of this home is the extraordinarily private and lush property with NEW sod, irrigation and meticulous landscaping. Mature specimen trees, foundation plantings and blooming perennials are yours to enjoy from the Sun Porch or relaxing Deck. The outdoors offer plenty of room for al fresco dining, entertaining and play.

And that's not all! An unfinished Utility/Storage Room off of the Lower Level offers plenty of potential to build a Wine Cellar and/or Exercise Room. This truly is an exceptional opportunity to own a pristine home on a prestigious block in sought after Berkeley Heights. 28 Spring Ridge Drive is an absolute must see!

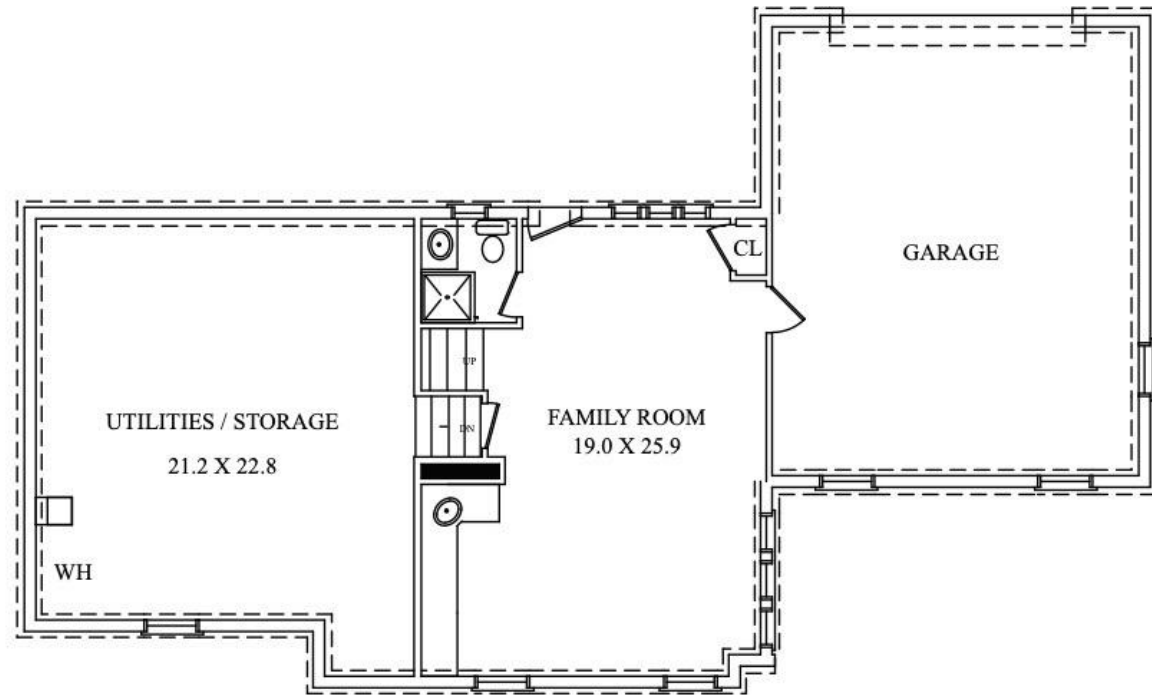
THE FLOORPLAN



FIRST LEVEL



SECOND LEVEL



LOWER LEVEL

NOT TO SCALE - This floor plan is provided for illustration purposes only.
Room positions and dimensions are approximate and should be independently measured for accuracy.

I N S I D E & O U T

First Level

- Cheery yellow front door with storm door
- Entry Vestibule and Entry Area featuring hardwood floors, Coat Closet, staircase to Second Level, Pocket Door to Rear Hallway
- Living Room featuring hardwood floors, picture window, wood burning fireplace with marble herringbone pattern tile surround (REDONE 2020), built ins flanking fireplace with open and concealed storage (REDONE 2020), recessed lighting, stucco ceiling, baseboard molding,
- Living Room Nook featuring oversized bay window with wood window seat, hardwood floors, chair rail, built in corner china cabinet, recessed lighting, stucco ceiling, baseboard molding
- Rear Hallway featuring cool cove ceiling, wood look laminate flooring, Laundry Closet with LG washer and dryer, wire shelving and peg storage, semi-pendant light fixture, pocket door to Entry Foyer, baseboard molding
- NEW (2020) Gourmet Chef's Kitchen featuring white custom wood cabinetry with shaker style doors, quartz countertops, grey tile backsplash, oversized island with seating for 3, built in storage and Summit beverage refrigerators, linear pendant lighting over island with glass globes, oversized fireplace with floor to ceiling brick surround, hearth and wood shelf, LG Studio stainless refrigerator/freezer, LG Studio stainless dishwasher, LG Studio 5 burner cooktop, built in LG Studio stainless microwave, LG Studio stainless oven, Kohler stainless sink, commercial style faucet, hardwood floors, crown molding above fireplace, recessed lighting, stucco ceiling, Dutch door to Sun Porch
- Eat-in Kitchen featuring hardwood floors, bay window with warm wood window seat, recessed lighting, baseboard molding, French door with full length sidelite to Sun Porch
- Sun Porch featuring wall to wall sliding glass doors/windows at 3 exposures, wood look flooring, Mud Room Area with built in benches with storage and hook/shelf storage, brick accent wall with storage niches and storage cabinet, shiplap ceiling with recessed lighting, sliding door to Deck

Lower Level

- Family Room featuring beamed ceiling, shiplap walls, hardwood floors, built in custom Wet Bar Area with custom cabinetry, sink, mirrored backsplash, glass shelving, open and concealed storage, beverage refrigerator, wood built in with open and concealed storage, Closet, track lighting, stucco ceiling, utility closets with slatted doors, door to backyard, oversized windows, door to unfinished Lower Level
- Full Bath featuring shiplap wainscoting, laminate flooring, built in vessel sink, shower with tile surround, fan/light, stucco ceiling
- 2 Car Garage with electric door, built in storage
- Step Down to Unfinished Part of Lower Level with Utility/Storage Room

Second Level

- Second Floor Landing featuring hardwood floors, recessed lighting, Linen Closet with floor to ceiling shelving
- Original raised panel doors
- Bedroom 2 featuring hardwood floors, flush mount light fixture, stucco ceiling, crown molding, baseboard molding, Double Door Closet, wood blinds
- Bedroom 3 featuring hardwood floors, flush mount light fixture, stucco ceiling, crown molding, baseboard molding, Double Door Closet, wood blinds
- Bedroom 4 featuring hardwood floors, flush mount light fixture, stucco ceiling, crown molding, baseboard molding, Closet, wood blinds
- Full Hall Bath featuring black and white hexagonal floor tile, bead board wainscoting, built in vanity with Corian countertop, oversized shower with sliding glass door and designer tile, light/fan

Third Level

- Primary Bedroom Suite featuring vaulted ceiling, hardwood floors, recessed lighting, 2 Double Door Closets, flush mount light fixture, wood blinds, Primary Bath featuring wall to wall built in vanity with sink and makeup Area, Double Door Closet, vaulted ceiling with skylight, sconces over sinks, recessed lighting, separate room with vanity with marble countertop, medicine cabinet, open shelving, tub/shower combination with marble tile surround, tile flooring, fan/light

Front/Backyard

- NEW pristine landscaping, sod, and trees removed
- Brick front walkway
- Entry with Bluestone Steps and Brick Risers
- Wood Deck with built in seating, room for BBQ, Dining and Lounge Area
- Bluestone stepping stones paths
- Flat, private yard with mature specimen trees and blooming perennials
- NEW Irrigation
- Large driveway with plenty of parking

Additional Features/Upgrades

- Freshly painted soothing neutral gray hues throughout
- On trend NEW light fixtures throughout
- Updated electrical and recessed lighting throughout
- NEW Boiler
- NEW chimney liners



CELL: 973.936.9129

OFFICE: 973.376.0033 x101

EMAIL: info@sueadler.com

sueadler.com/28SpringRidge

sueadler 
THE #1 KELLER WILLIAMS TEAM IN NEW JERSEY **team**

kw PREMIER
PROPERTIES
KELLERWILLIAMS.