

224 KINGSLAND TERR
SOUTH ORANGE, NJ



Welcome to 224 Kingsland Terrance! This stunning 5 bedroom, 4 and ½ Bath home with an incredible floor plan checks each and every box. Enjoy all this home has to offer with close proximity to the elementary, middle school, high schools, and the Mid-Town Direct. Close to restaurants and shopping, this house is a must-see! Walk up the paver walkway to the amazing screened-in porch that stretches the entire front of the home. Plenty of space for a sitting and dining area. Step through the front door in the large and bright foyer with lots of natural light and gleaming hardwood floors.



Prepared to be mesmerized by the spacious inviting family room featuring a wood-burning fireplace. Flow right into the warm and bright sunroom with nine windows. Perfect for a good book and a cup of tea. The Gourmet Kitchen is a showstopper with top-of-the-line stainless steel appliances (Sub-Zero refrigerator, Bosch Dishwasher, Wolf 6 burner plus griddle stove and a pot filler), warm wood cabinets, and a great center island that can fit three stools. Large pantry, glass display cabinets, and granite countertops make this space ideal for a gourmet chef! A sophisticated Dining Room with a butler's door for privacy is perfect for your next dinner party. A tasteful Powder Room rounds out the first floor.



Ready to retire for the evening? Walk up the elegant staircase to find the private Primary Bedroom Suite. A spacious room with two hanging chandeliers and a spacious closet. A spa-like Primary bathroom complete with a steam shower completes this oasis. Three additional spacious bedrooms with lots of sunlight and gleaming hardwood floors are on this level. A well-appointed full hallway bath completes this level.

Head to the third floor find an additional bedroom perfect for the nanny or Au Pair. A Full Bathroom completes with a tub and additional storage complete this level.

And there is more! Head to the lower level which is an entertainer's dream! A large Recreation Room complete with a pool table, a large bar height counter with granite countertop, and enough room for four stools. A bar area with a beverage and wine refrigerator and two beer taps! Laundry is a pleasure on this floor with ample space for all of your needs. An on-trend Full Bathroom complete with a spacious steam shower with two benches rounds out this level.

The entertaining area continues when you are in the backyard of this gem. Enjoy your fully fenced-in backyard and a large wooden deck with enough room for a sitting and dining area. The two-car garage completes this area.

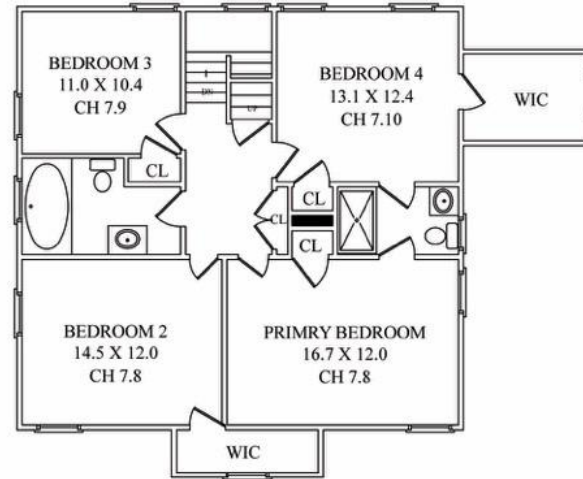
224 Kingsland Terrace is a perfect home for the family that wants to be in a fun neighborhood, close to schools, Mid Town direct, and the center of South Orange for all of its hustle and bustle. This home is not to be missed!



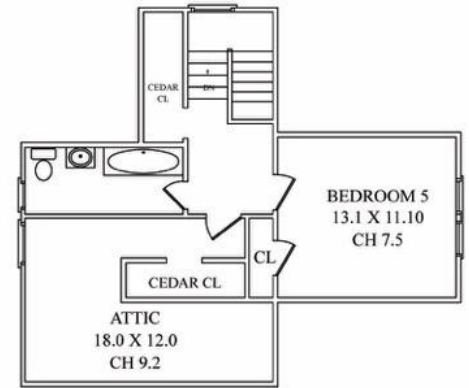
THE FLOORPLAN



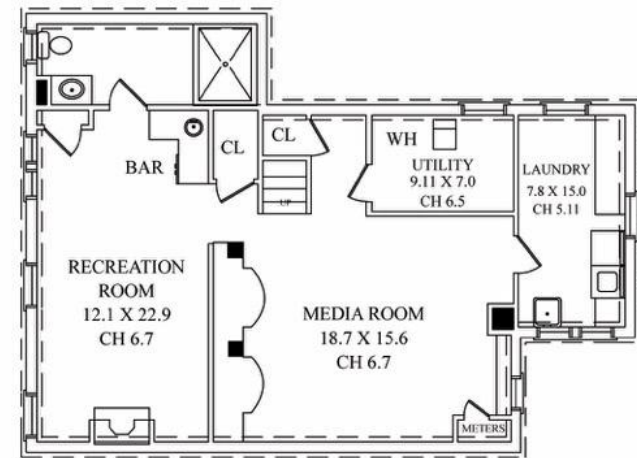
FIRST LEVEL



SECOND LEVEL



THIRD LEVEL



LOWER LEVEL

NOT TO SCALE - This floor plan is provided for illustration purposes only.
Room positions and dimensions are approximate and should be independently measured for accuracy

INSIDE & OUT

First Level

- Foyer featuring hardwood floors, coat closet, main staircase to the second level, flush mount lighting
- Dining Room featuring hardwood floors, three windows, modern chandelier, butler's door to kitchen, crown molding, base molding
- Kitchen featuring a center island, granite countertops, wood cabinets, pot filler, four windows, recessed lighting, pantry, stainless steel appliances (Subzero refrigerator, Bosch dishwasher, Wolf 6 burner plus griddle stove), tile floors, hanging lights over island, glass display cabinets, access to the lower level
- Powder Room featuring hardwood floors, one sink and vanity, recessed lighting, sconce lighting
- Family Room featuring hardwood floors, wood-burning fireplace, wood mantel, four windows, crown molding, baseboard molding
- Sunroom featuring hardwood floors, nine windows, flush mount lighting, crown molding, baseboard molding

Second Level

- Foyer featuring hardwood floors, flush mount lighting, double linen closet
- Bedroom #1 featuring two windows, flush mount lighting, one closet, hardwood floors
- Bedroom #2 featuring two windows, one walk-in closet, chandelier, hardwood floors
- Bedroom #3 (jack and jill bathroom sharing with Master Bedroom) featuring two windows, hardwood floors, one walk-in closet, one single closet
- Primary Bedroom featuring hardwood floors, one closet, two windows, two hanging chandeliers, surround sound, crown molding, baseboard molding
- Primary Bathroom (jack and jill with bedroom #3) featuring tile floor, one window, pedestal sink, chair rail design with tile, steam shower with glass door with rain shower head, handheld, and a bench
- Full Hallway bath featuring a large jacuzzi bathtub, one window, recessed lighting, crown molding, tile floor, single sink with vanity, and a built-in mirror with medicine cabinet

Third Floor

- Foyer featuring flush mount lighting, one closet, hardwood floors
- Bedroom #1 featuring two windows, ceiling fan, carpeted floors, one closet
- Full Bathroom featuring decorative tile, tub, sink, one window, flush mount lighting, medicine cabinet
- Storage Room/Attic

Lower Level

- Large Recreation Room and Media Room featuring a long bar counter with four stools and a granite countertop, recessed lighting, hanging decorative lighting, gas fireplace, pool table, five windows, tile floors, two closets
- Large Media room
- Bar featuring granite countertops, beverage fridge, wine refrigerator, two beer taps
- Full Bathroom featuring tile floors, one window, sink and vanity, large steam shower with two benches, side jets, handheld shower
- Laundry Room featuring four windows, slop sink, washer, dryer, counter with cabinets, tile floors, recessed lighting

Outside

- Two car garage
- Fenced in backyard
- Wood deck
- Large screened in front porch



CELL: 973.936.9129

OFFICE: 973.376.0033 x101

EMAIL: info@sueadler.com

sueadler.com/224Kingsland

