

34 GLOUCESTER ROAD
SUMMIT, NJ

Welcome to 34 Gloucester Road! Beautifully situated on an enchanting lot in Summit's prestigious Woodland Park neighborhood, this elegant 4 Bedroom, 2 Full, 2 Half Bath Center Hall Colonial, is perfect in every way. A Gourmet Chef's Kitchen that wows, idyllic property and timeless craftsmanship are just a few of the hallmarks of this incredible home. Drive up the winding, tree-lined street and immediately you will know you have arrived somewhere special.



The regal exterior, exquisite, tiered gardens and winding walkway all contribute to the home's excellent curb appeal. Enter the front door into the bright and sunny Entry Foyer with two tremendous coat closets, a gracious staircase and views of the Living and Dining Rooms beyond. Flow easily into the spacious front to back Living Room with a stately gas fireplace, gleaming hardwood floors, warm wainscoting and oversized windows overlooking the picturesque property.





Dinner parties are divine in the elegant formal Dining Room complete with additional wainscoting and huge windows so that the light pours in. The stunning Gourmet Kitchen is sure to satisfy every chef's desire. An abundance of custom, crisp white cabinetry, granite countertops and high-end stainless steel appliances are the best in form and function. Breakfast is served in the light-filled adjacent Breakfast Area where you feel you are floating in the tree tops. Don't miss the fabulous Laundry Room (or a potential Mud Room) off of the kitchen where it's easy to drop backpacks and throw in a load of laundry. A new paver walkway and bluestone staircase off a side entrance makes this room even more convenient.

Beyond the Kitchen, you are sure to be impressed by the magnificent Family Room. This room, which includes a Built In Wet Bar and rustic wood beams, exudes relaxation and is well suited for family game night, movie watching or cocktails. A renovated Powder Room rounds out the First Level. Ready to retire for the evening? Wander up the elegant staircase to find the large second floor landing complete with a Linen Closet with floor to ceiling shelving.



Prepare to relax in the private, roomy and sunlit Primary Bedroom Suite. A charming fireplace surrounded by classic Delft tile is the perfect focal point for the room. Two spacious closets and a well-appointed bath round out this space. Bedrooms 2 through 4 feature tons of sunlight, gleaming hardwood floors and spacious closets. Bedrooms 2, 3 and 4 share the tasteful Full Hall Bathroom complete with a vanity, crisp tile and a roomy bath/shower.





And there's more! The "Walk Out" Lower Level boasts a fully finished Recreation Room perfect for endless hours of family entertainment. Take the Double French Doors out to the stunning Brick Patio with plenty of room for barbequing, lounging and dining. Extensive landscaping, including rhododendron, pachysandra, hostas and other blooming perennials, ensure spectacular views for your guests. Back inside, DIY projects are a pleasure in the nearby Work Room. A renovated Half Bath, tons of storage and a 2 Car Garage with additional built in storage round out the Lower Level.

Simply put, this spacious Lower Level adds tons of living space and functionality to the home.

With its serene setting, spacious floor plan, tight knit neighborhood, easy access to Midtown Direct train service, exceptional school district and convenience to Summit's fantastic shopping and restaurants, 34 Gloucester Road is an extraordinary value and the perfect place to call home!

INSIDE & OUT

FIRST LEVEL

- Entry Foyer featuring original wood door with sidelites, hardwood floors, wallpaper, 2 Coat Closets, lantern, crown molding, baseboard molding, staircase to Second Level
- Front to Back Living Room featuring hardwood floors, gas fireplace with floor to ceiling custom millwork mantle and stone surround, wainscoting, crown molding, oversized windows at front and back
- Family Room featuring hardwood pegged floors, Built In Wet Bar/Liquor Closet with sink, paneling, beamed ceiling, recessed lighting, oversized windows overlooking rear yard, custom built in bookshelves
- Dining Room featuring hardwood floors, wainscoting, wallpaper, oversized double windows, baseboard molding, crown molding, chandelier, swinging door to kitchen
- Powder Room featuring pedestal sink, recessed lighting, tile flooring, baseboard molding, crown molding, window
- NEW Gourmet Chef's Kitchen (2019) featuring tile flooring, custom white wood cabinetry, custom hood, granite countertops, decorative tile backsplash, built in Desk Area, Breakfast Area, oversized windows, recessed lighting, GE Profile stainless wall oven, GE stainless built in microwave, GE Profile electric cooktop, Kitchen Aid stainless dishwasher, LG stainless refrigerator/freezer, baseboard molding, crown molding
- Laundry/Mud Room featuring tile flooring, built in cabinetry, recessed lighting, baseboard molding, door to side yard, Frigidaire refrigerator, 2 large windows

SECOND LEVEL

- Staircase with runner to Second Level
- Second Level Landing featuring runner, wallpaper, recessed lighting, pull down attic, baseboard molding, Linen Closet with floor to ceiling shelving
- Primary Bedroom Suite featuring fireplace with custom millwork mantle and decorative Delft tile surround, hardwood floors, wallpaper, recessed lighting, baseboard molding, oversized windows at 3 exposures, ceiling fan, 2 Double Door Closets
- Primary Bathroom featuring floor tile, built in wall to wall vanity with storage, upper built in cabinetry, wallpaper, flush mount light fixture, shower with glass door and tile surround

SECOND LEVEL CONTINUED

- Bedroom #2 featuring hardwood floors, Double Door Closet, oversized windows, baseboard molding
- Bedroom #3 featuring hardwood floors, Double Door Closet, oversized windows at 2 exposures, baseboard molding, wallpaper
- Bedroom #4 featuring hardwood floors, Double Door Closet, baseboard molding, oversized windows at 2 exposures, wallpaper border
- Full Hall Bathroom featuring tile flooring, wallpaper, vanity, baseboard molding, medicine cabinet, tile wainscoting, shower over tub with tile surround

LOWER LEVEL

- Carpeted staircase to Lower Level, wainscoting
- Walk Out Recreation Room featuring Double French Doors to backyard, wall to wall custom built in with open and concealed storage, carpeting, oversized above ground window, recessed lighting, wallpaper, baseboard molding
- Work Room with work bench, peg storage
- Utility/Storage Area with Double Door Storage Closet
- Half Bath featuring tile flooring, vanity, medicine cabinet, flush mount light fixture, baseboard molding
- Entry Area (potential Mud Room Area) by garage door with wire shelving
- 2 Car Garage with electric doors, built in storage, peg storage

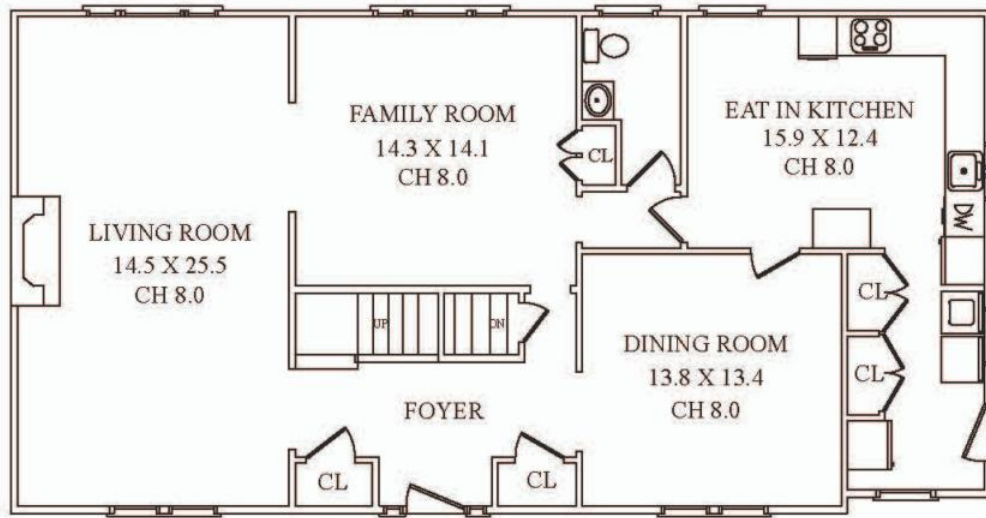
FRONT/BACKYARD

- NEW Paver Front Walkway
- Professionally landscaped throughout with blooming perennials and groundcover including rhododendron, pachysandra, hostas, Japanese maple to name a few
- Rustic stone wall with built in beds for planting
- Brick Patio with room for barbequing, lounging and dining
- NEW Paver pathway and bluestone steps to Side Entry
- Stepping stone pathways and stone steps to backyard's lower level
- Large driveway with pavers at entry and extra parking at rear
- Irrigation system

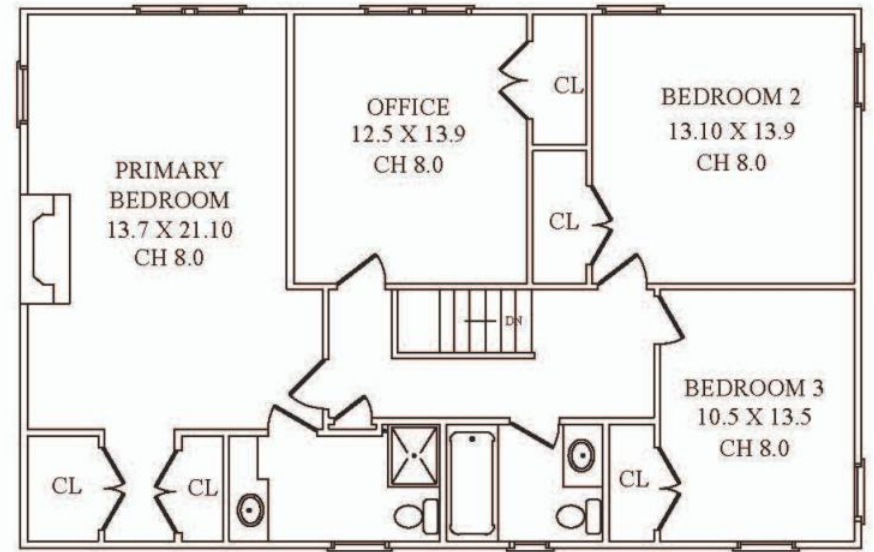
ADDITIONAL FEATURES

- NEW furnace, AC and 75 gallon water heater (Winter 2021)
- Hardwood floors recently redone (2018)
- Baldwin hardware and hinges throughout

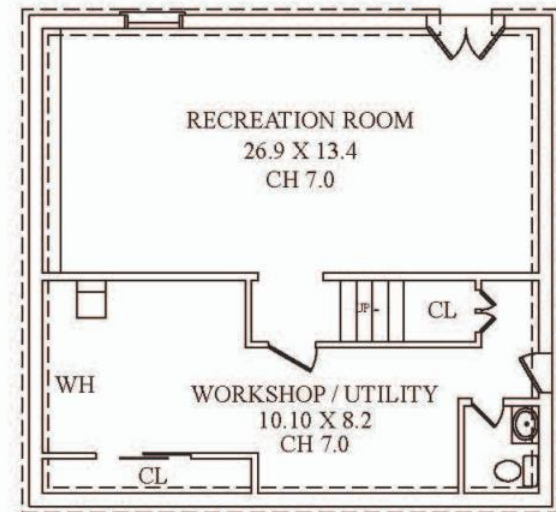
THE FLOORPLAN



FIRST LEVEL



SECOND LEVEL



LOWER LEVEL

NOT TO SCALE -The floor plan is provided for illustration purposes only. Room positions and dimensions are approximate and should be independently measured for accuracy.



CELL: 973.936.9129

OFFICE: 973.376.0033 x101

EMAIL: info@sueadler.com

sueadler.com/34Gloucester