

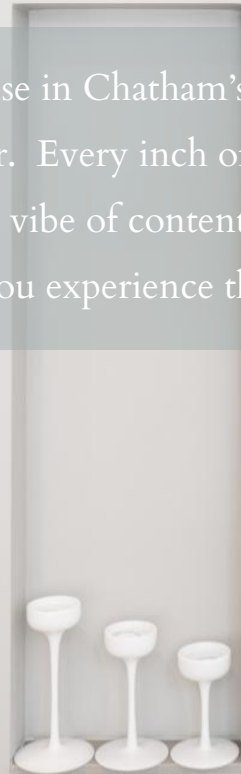
37 GLENMERE DRIVE CHATHAM, NJ

kw PREMIERE
PROPERTIES
KELLER WILLIAMS

Each Keller Williams office is individually owned and operated.

sueadler 
THE #1 KELLER WILLIAMS TEAM IN NEW JERSEY team

Welcome to 37 Glenmere – the BEST house in Chatham’s coveted Wickham Woods! NOT A THING needs to be done to this flawless 5 Bedroom, 3.5 bath stunner. Every inch of this home has been renovated and delivers sleek, clean lines and cool modern design delivering the perfect vibe of contentment and well-being. Every design choice has been thoughtfully made and it shows. Once you experience this fully custom home, you will never want to leave.





Drive up to 37 Glenmere Drive and you will instantly see what makes this home head and shoulders above the rest. Meticulous landscaping, classic shutters, a regal portico entrance, and a stately bluestone walkway and terrace all contribute to this home's incomparable curb appeal.

As you enter the home, you are sure to be overcome by soothing hues, wide-plank washed gray/white hardwood floors, and a distinctly Scandinavian serene feel that carries throughout the entire home. A fantastic flow and gracious rooms make this the ideal home for family gatherings and entertaining. The Entry Foyer includes a NEW front door with a "Smart" August door lock and gorgeous views of both the Living and Dining Rooms beyond. Enter the Living Room and enjoy the warmth of the gas fireplace or watch the light pour in the enormous bay window. Whether it is family gatherings or cozying up with a book, this room exudes relaxation.





Dinner parties are divine in the sun-drenched Formal Dining Room complete with a gorgeous modern statement light fixture and another huge bay window. The Dining Room flows seamlessly into the exquisitely renovated Gourmet Chef's Dream Kitchen. The sun-drenched Gourmet Kitchen is flawless with custom cabinets in crisp white, quartz countertops and top of the line Wolf/Sub-Zero/Miele appliances. Tons of custom storage, an oversized warm chocolate Island with seating for three and a bright and cheery Breakfast Room are the best in form and function. Looking for a quiet spot to contemplate your day or hosting a pool party? No problem! Flowing easily off of the Kitchen is the stunning Sun Room complete with a vaulted natural wood ceiling, a fabulous custom built in with storage and refrigerator drawers, and breathtaking views of the resort-like yard.



Beyond the Kitchen, you are sure to be enthralled by the magnificent Family Room. Bathed in sunlight, the Family Room is nothing less than a work of art with its sleek modern statement fireplace, a custom built-in, a vaulted ceiling with skylights and stunning views of the backyard and pool. This room is extraordinarily designed to strike the perfect balance between cozy and elegance. A tasteful Powder Room and a two car garage (with stylish NEW rustic wood garage doors) round out this level.

Another show stopper of this home is the exceptional property perfect for outdoor entertaining. The South facing yard is in a class of its own boasting a free-form heated pool, a jacuzzi/spa, meticulous landscaping and plenty of room to entertain guests. The outdoor space flows seamlessly from the Family Room and Sun Room so that indoor/outdoor entertaining is seamless.

When it's time to retire for the evening, luxury abounds in the completely Zen Primary Bedroom with a serene modern fireplace, a dreamy, vaulted ceiling and 2 fully custom Walk In Closets so that everything will be neatly tucked away.

Tranquility reignssupreme in the spa-like Primary Bathroom with a huge custom double vanity with marble countertop, a gorgeous soaking tub, designer tile selections, and a huge steam shower with jets and a rain shower-head.



All other bedrooms are steeped in sunlight and include generous custom closets. Three of the bedrooms include FABULOUS Custom Built In Desk Areas with so much storage and plenty of room to work. Bedroom 3 is flexibly being used as an Office. Bedrooms 4 and 5 are both ensuite with sleek modern bathrooms that include floating vanities with quartz and spa-like showers. All upstairs bathrooms include high efficiency toilets, programmable radiant heat and heated towel racks (Wi-Fi controlled). A conveniently located Second Floor Laundry makes doing laundry an absolute pleasure.

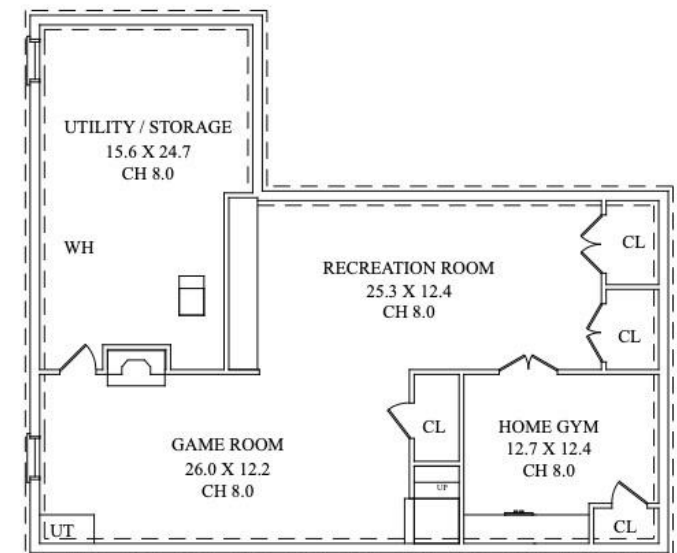
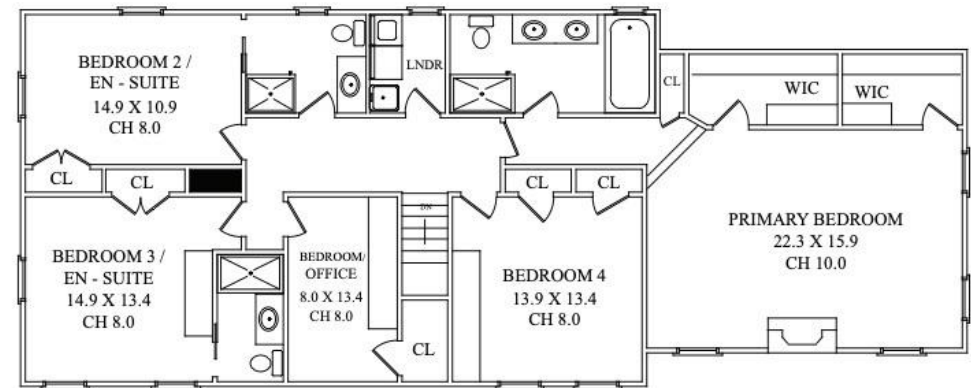
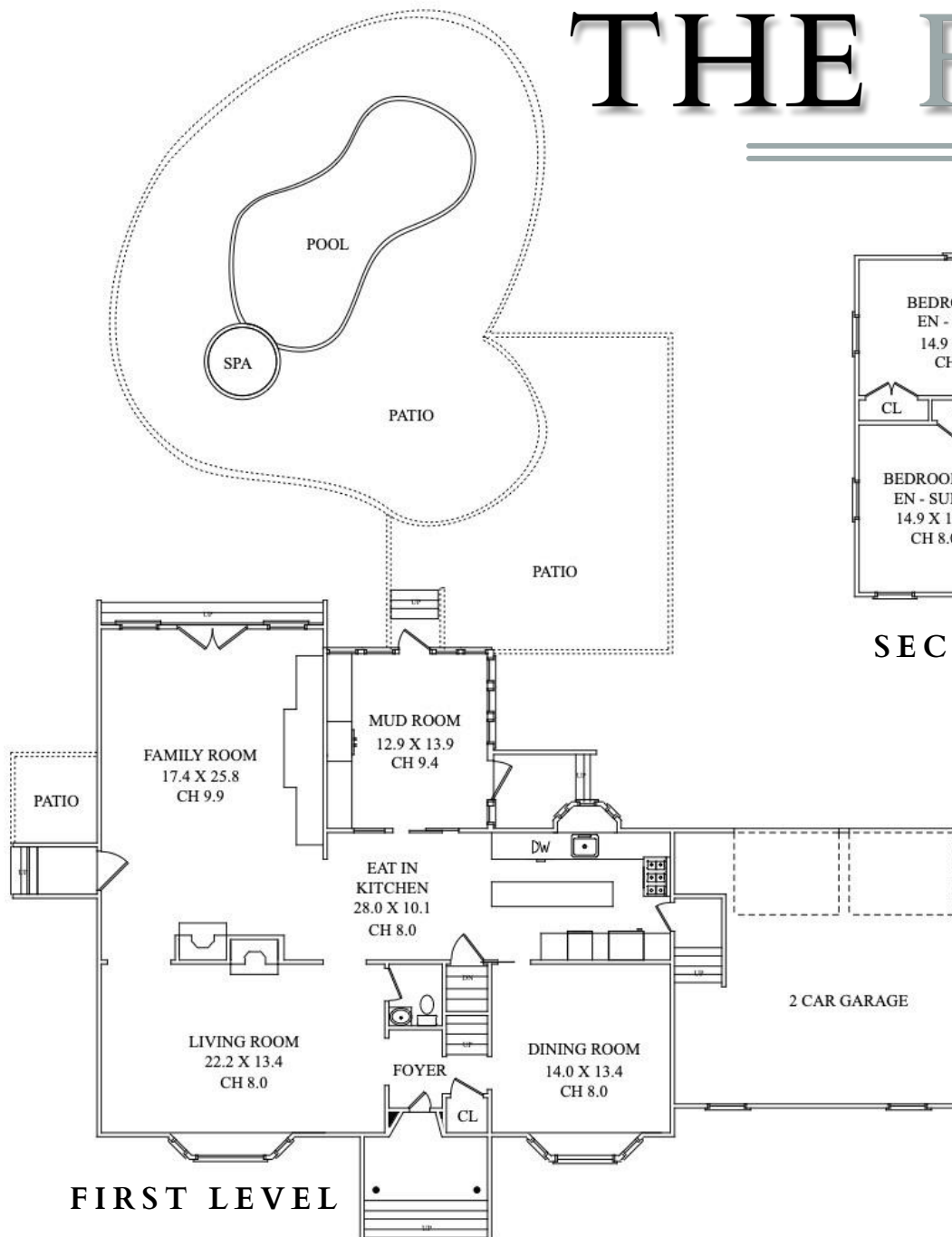




And it doesn't end there! The spacious Lower Level, with a Play Room and Recreation Room means there is plenty of room for arts and crafts, X-box and movie watching. An out of this world Home Gym, with huge double glass doors at entry and a custom built in with a Sub Zero beverage refrigerator, is the perfect spot for a Peloton bike ride or your morning yoga.

With its incredible Wickham Woods neighborhood, Blue Ribbon Schools, proximity to New York City, Midtown Direct Train and convenience to fantastic shopping and restaurants, 37 Glenmere Drive is unparalleled in its class and is an absolute must see.

THE FLOORPLAN



NOT TO SCALE -The floor plan is provided for illustration purposes only. Room positions and dimensions are approximate and should be independently measured for accuracy.

INSIDE & OUT

FIRST LEVEL

- ENTIRE 1st Floor Renovation, 2017
- Entry Foyer featuring front door with August “Smart” lock, wide plank washed gray/white hardwood floors, pendant light fixture, Coat Closet, baseboard molding, crown molding, hook storage
- Living Room featuring arched entry, wide plank washed gray/white hardwood floors, gas fireplace with custom millwork mantle and stone surround and hearth, bay window with window seat, custom window treatments, recessed lighting, crown molding, baseboard molding
- Powder Room featuring wide plank washed gray/white hardwood floors, pedestal sink, flush mount light fixture, crown molding, baseboard molding, fan, high efficiency toilet
- Dining Room featuring wide plank washed gray/white hardwood floors, bay window with window seat, custom window treatments, pocket door to Kitchen, modern designer pendant light fixture, crown molding, baseboard molding
- Gourmet Chef's Kitchen featuring wide plank washed gray/white hardwood floors, crisp white and sleek custom cabinetry including soft closing drawers and cabinets, glass door cabinetry, quartz countertops, tile backsplash, oversized chocolate island with seating for 3, FLOS pendant light fixtures over island, recessed lighting, Miele stainless dishwasher, Wolf 6 burner oven/stove (owner has silver and red handles), Wolf stainless built in wall steam plus convection oven, Wolf stainless built in microwave, Sub-Zero stainless refrigerator/freezer, stainless VentAHood, bay window with roman shades, stainless sink with gooseneck fixture, door to Lower Level
- Breakfast Room featuring wide plank washed gray/white hardwood floors, , floor to ceiling furniture style built in cabinetry, sliding doors to Sun Room, window with roman shade, chalk/magnetic area
- Family Room featuring arched entry from Living Room, open to Kitchen, wide plank washed gray/white hardwood floors, sleek modern gas fireplace with gray stone surround, display nook, vaulted ceiling with skylights, Custom Built In with open, media and concealed storage, recessed lighting, crown molding, baseboard molding, door to side yard, wall of windows and double French doors out to Pool Area, custom window treatments
- Sun Room featuring vaulted ceiling with natural bead board, Custom Built In Dry Bar/Storage with drawers, quartz countertop and 2 Marvel refrigerator drawers, ceiling fan/light fixture, carpeting, door to driveway area, sliding doors to Pool Area

- 2 Car Garage with NEW rustic natural wood LiftMaster Garage Doors and “Smart” controllers, storage

LOWER LEVEL

- Carpeted staircase with bead board wainscoting
- Recreation/Play Room featuring NEW carpeting, rustic brick fireplace, recessed lighting, baseboard molding, windows with NEW well covers
- 2nd Recreation/Play Area featuring NEW carpeting, Custom Wall to Wall Built In with open, media and concealed storage, recessed lighting, baseboard molding, 2 Double Door Storage Closets with built in shelving
- NEW Custom Home Gym featuring double glass doors at entry, LED lighting at entry, Wall to Wall Custom Built In with wood countertop, storage and Sub-Zero beverage refrigerator, wood look vinyl flooring, oversized mirror, baseboard molding, drop ceiling with lighting, wired for media, floor plug for Peloton, Utility Closet
- Utility/Storage Room
- New carpet, painted, recreation room, fireplace
- 3 Quality Basement Sump Pumps with back-up pumps on battery (all hooked to automatic generator as well)

SECOND LEVEL

- Staircase to Second Level with wainscoting
- Second Floor Landing featuring hardwood floors, wainscoting, sconce, modern designer pendant light fixture
- Primary Bedroom Suite featuring entry area with Linen Closet with floor to ceiling shelving, vaulted ceiling, built-in gas fireplace insert, TV hookup with hidden nook for media components, ceiling fan/light fixture, recessed lighting, windows at 2 exposures with wood blinds and custom window treatments, 2 Walk In Closets with custom-built shelving, hanging, mirror, drawers and shoe storage, carpeting, accent wall with wallpaper, baseboard molding
- Primary Bathroom featuring custom built in oversized double vanity with marble countertop, tile floor with programmable radiant heat, heated towel rack with Wi-Fi controls, oversized frameless glass door steam shower with Grohe rain shower-head, handheld shower, shower jets, bench and designer tile surround, modern sconces, recessed lighting, 2 windows with wood blinds, high-efficiency toilet, built-in tub with designer tile surround, fan

SECOND LEVEL (CONTINUED)

- Bedroom 2 featuring Custom Built In Desk Area with open and concealed storage and large workspace, hardwood floors, pendant light fixture with drum shade, crown molding, baseboard molding, 2 windows with wood blinds and custom window treatments, 2 Closets
- Bedroom 3/Home Office featuring hardwood floors, Custom Built In Desk Area with open and concealed storage and large workspace, Closet, designer pendant light fixture, window with wood blinds, baseboard molding
- Ensuite Bedroom 4 featuring hardwood floors, Custom Built In Desk Area with open and concealed storage and large workspace, Double Door Closet with custom storage, windows at 2 exposures with wood blinds, baseboard molding, Bathroom featuring pocket door with oversized mirror at entry, washed gray wood look floor tile with programmable radiant heat, heated towel rack with Wi-Fi controls, floating vanity with quartz countertop, recessed lighting, 2 sconces, medicine cabinet, frameless glass door shower with pebble floor tile and designer tile surround, Grohe rain shower-head, handheld shower and jets, high efficiency toilet, fan, floating shelf
- Ensuite Bedroom 5 featuring hardwood floors, Double Door Closet with custom storage, windows at 2 exposures with wood blinds, baseboard molding, Bathroom featuring washed gray wood look floor tile with radiant heat, heated towel rack with Wi-Fi controls, floating vanity with quartz countertop, recessed lighting, 2 sconces, medicine cabinet, frameless glass door shower with pebble floor tile and designer tile surround, Grohe rain shower-head, handheld shower and jets, high efficiency toilet, fan, floating shelves, bathroom also has door to hallway
- Laundry Room featuring utility sink/cabinet, wire shelving, laminate flooring, Bosch washer, Whirlpool dryer, upper cabinet, recessed lighting, window with wood blinds

LOWER LEVEL

- Carpeted staircase with bead board wainscoting
- Recreation/Play Room featuring NEW carpeting, rustic brick fireplace, recessed lighting, baseboard molding, windows with NEW well covers
- 2nd Recreation/Play Area featuring NEW carpeting, Custom Wall to Wall Built In with open, media and concealed storage, recessed lighting, baseboard molding, 2 Double Door Storage Closets with built in shelving
- NEW Custom Home Gym featuring double glass doors at entry, LED lighting at entry, Wall to Wall Custom Built In with wood countertop, storage and Sub-Zero beverage refrigerator, wood look vinyl flooring, oversized mirror, baseboard molding, drop ceiling with lighting, wired for media, floor plug for Peloton, Utility Closet

- Utility/Storage Room
- New carpet, painted, recreation room, fireplace
- 3 Quality Basement Sump Pumps with back-up pumps on battery (all hooked to automatic generator as well)

FRONT & BACKYARD

- Sprawling, lush front lawn, professional landscaping with blooming perennials and foundation plantings
- Lovely Bluestone Front Walkway and Bluestone Terrace
- Regal Front Portico with Bluestone Landing
- Walpole posts
- Free form heated pool (heater is 5 years old), with diving board, up to 7' deep, Jacuzzi/Spa
- Fully fenced in backyard with professional landscaping, stone walls, tiers
- Paver Patio for dining
- Paver Landing and steps off of Sun Room leading to driveway
- Cool modern outdoor light fixtures
- Bluestone Steps and Landing off of side door (off Family Room)
- Redone driveway with tons of parking and room for play
- 7 zone automated irrigation system

EXTERIOR UPGRADES (2019)

- NEW heated cables for prevention of ice dam
- NEW windows throughout in the front
- NEW Front Portico
- NEW Exterior Power Washing, Carpentry and Azek
- Complete exterior Painted in 2019
- NEW Walpole posts and exterior lights
- NEW leaders and gutters
- NEW shutters
- NEW Garage Doors, new LiftMaster hardware with Wi-Fi technology
- Maintenance free fencing

ADDITIONAL FEATURES & UPGRADES

- Automatic Gas Generator
- NEW chimney liner
- Culligan water softener
- Trane equipment/AC, 2 zones
- Tankless water heater
- ADT alarm system



CELL: 973.936.9129

OFFICE: 973.376.0033 x101

EMAIL: info@sueadler.com

sueadler.com/37Glenmere

