



5 PLYMOUTH ROAD  

---

CHATHAM, NJ



Welcome to 5 Plymouth Road! Beautifully situated on a deep, picturesque lot on an ultra-private cul-de-sac, this elegant 4 Bedroom, 2 Bath Colonial/Split is picture perfect in every way. As you arrive, take in the lush front lawn, elegant gabled roof and sleek black shutters. Inside, soothing neutral hues, gleaming hardwood floors and fabulous flow are just a few of this terrific home's hallmarks.







The bright and sunny Foyer features hardwood floors, a spacious Coat Closet and a view of the gracious staircase leading to the second floor.

Flow easily into the sundrenched Living Room with an elegant fireplace and a gorgeous picture window where the sun pours in. Dinner parties are divine in the elegant Dining Room complete with a cool modern linear chandelier and two built-in China cabinets to store all of your dishes and glassware. The stunning Gourmet Kitchen is sure to satisfy every chef's desire. An abundance of crisp white cabinetry, Corian countertops, an island with seating for 4 and Kitchen Aid high-end stainless steel appliances are the best in form and function.



Beyond the Kitchen, you are sure to be impressed by the sunny and bright Family Room. This room, which uses skylights and windows to perfection, simply radiates and is well suited for family game night, movie watching or cozy nights with friends. The Family Room leads out to the stunning backyard. A lush green lawn, mature specimen trees and a Patio for entertaining makes the backyard THE perfect spot for spring and summer.

Whether it is outdoor play, relaxation or simply roasting marshmallows with friends, the backyard exudes tranquility.

Ready to retire for the evening? Wander up the elegant staircase to find the large second floor landing complete with a Linen Closet with floor to ceiling shelving. Prepare to relax in the private, roomy and sunlit Primary Bedroom with two spacious closets (1 Walk In). Getting ready is a pleasure in the spacious Hall Bathroom featuring a large vanity and an oversized shower with tasteful tile throughout. Bedroom #2 is sunny and bright and includes an enormous closet.

Walk up a few more steps to the cheery and elegant Third Level. Two bedrooms are steeped in sunlight and include generous closets (Bedroom #4 has both a cedar and regular closet). A well-appointed Full Bath, with a gracious pedestal sink and designer tile, makes getting ready a pleasure. Attic/storage space rounds out the Third Level.











---

---

And there's more! The Lower Level boasts a fully finished Recreation/Play Room with chic wood look flooring, perfect for endless hours of family entertainment. A spacious Laundry/Storage Room provides plenty of room for spreading out and storing all your wares. Also, don't miss the spacious 1.5 Car Garage with its own Storage/Work Room.

---

---

---

---

With its serene setting, spacious floor plan, easy access to Midtown Direct Train and local schools and convenience to downtown Chatham, 5 Plymouth Road is an extraordinary value and the perfect place to call home!

[sueadler.com/5Plymouth](http://sueadler.com/5Plymouth)

---

---



# INSIDE & OUT

## FIRST LEVEL

- Entry Area featuring door with leaded glass, hardwood floors, Coat Closet, flush mount light fixture, crown molding with dentil detail, baseboard molding, staircase to Second Level
- Living Room featuring fireplace with custom millwork mantle and brick surround, windows at 2 exposures, picture window, hardwood floors, crown molding with dentil detail, baseboard molding
- Dining Room featuring architectural brushed gold linear fixture, chair rail, 2 built in corner china cabinets, hardwood floors, crown molding with dentil detail, baseboard molding
- Family Room featuring hardwood floors, folding French doors at entry, vaulted ceiling with skylights, wall of windows at 2 exposures, door to backyard
- Kitchen featuring custom crisp white cabinetry, island with storage, butcher block countertop and seating for 4, Corian countertops with integrated sink, tile backsplash, bay window, stainless Kitchen Aid refrigerator/freezer, stainless Kitchen Aid dishwasher, stainless Kitchen Aid oven/range, GE built in stainless microwave, recessed lighting, gooseneck fixture, appliance cabinets, floor to ceiling pantry storage, door to Lower Level, baseboard molding, tile flooring

## LOWER LEVEL

- Staircase to Lower Level, Side Door to garage
- 1 Car Garage with storage
- Work/Storage Room off of Garage, door to backyard
- Recreation Room featuring wood look laminate flooring, recessed lighting, storage and utility closets, baseboard molding
- Laundry and Storage Room, Maytag washer, GE dryer
- Sump pump and French drains

## SECOND LEVEL

- Second Level Landing featuring hardwood floors, Linen Closet with floor to ceiling shelving, flush mount light fixture, baseboard molding
- Primary Bedroom featuring hardwood floors, windows at 2 exposures, ceiling fan/light fixture, baseboard molding, Walk In Closet, 2nd Closet
- Bedroom #2 featuring hardwood floors, ceiling fan/light fixture, triple windows, baseboard molding, Double Sized Closet
- Full Hall Bathroom featuring vanity with integrated sink, glass door shower with designer tile surround, tile wainscoting, tile flooring, flush mount light fixture, medicine cabinet, 2 sconces, hanging cabinet, recessed light in shower

## THIRD LEVEL

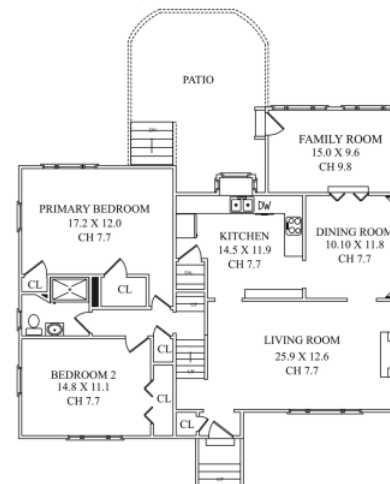
- Third Level Landing featuring hardwood floors, Linen Closet with floor to ceiling shelving, flush mount light fixture, baseboard molding, door to attic storage space
- Full Hall Bathroom featuring vaulted ceiling, pedestal sink, shower over tub with glass door and designer tile surround, tile wainscoting, tile flooring, open shelves, 3 light sconce, medicine cabinet
- Bedroom #3 featuring hardwood floors, chair rail, vaulted ceiling, hardwood floors, windows at 2 exposures, ceiling fan/light fixture, baseboard molding, Closet
- Bedroom #4 featuring hardwood floors, vaulted ceiling, windows at 2 exposures, ceiling fan/light fixture, Closet, 2nd Cedar Closet, baseboard molding

## FRONT & BACK YARD

- Large driveway framed by paver retaining walls
- Covered front entry
- Picket fences on both sides of house for entrance to backyard
- Paver Patio
- Flat and lush fenced in yard with privacy, landscaping and mature specimen trees

## ADDITIONAL FEATURES & UPGRADES

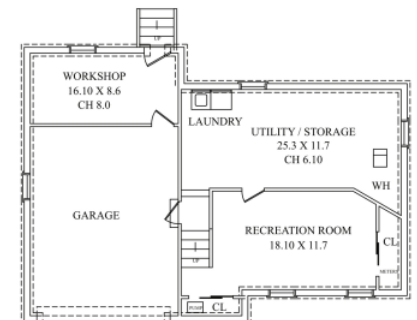
- Freshly painted soothing hues throughout
- Easy walkable access to elementary, middle and high school
- NEWER Water Heater (2018)
- Heat/AC, 1 zone



FIRST LEVEL



SECOND LEVEL



LOWER LEVEL





CELL: 973.936.9129

OFFICE: 973.376.0033 x101

EMAIL: [info@sueadler.com](mailto:info@sueadler.com)

[sueadler.com/5Plymouth](http://sueadler.com/5Plymouth)

**sueadler**   
THE #1 KELLER WILLIAMS TEAM IN NEW JERSEY **team**

**kw** PREMIER  
PROPERTIES  
KELLERWILLIAMS.