

UPSTAIRS DINING

EAST BROAD STREET

WIDTH VARIES

ASPHALT PAVED CONCRETE CURB
(ALSO KNOWN AS BROAD STREET)

N 35° - 59' E 66' 00"

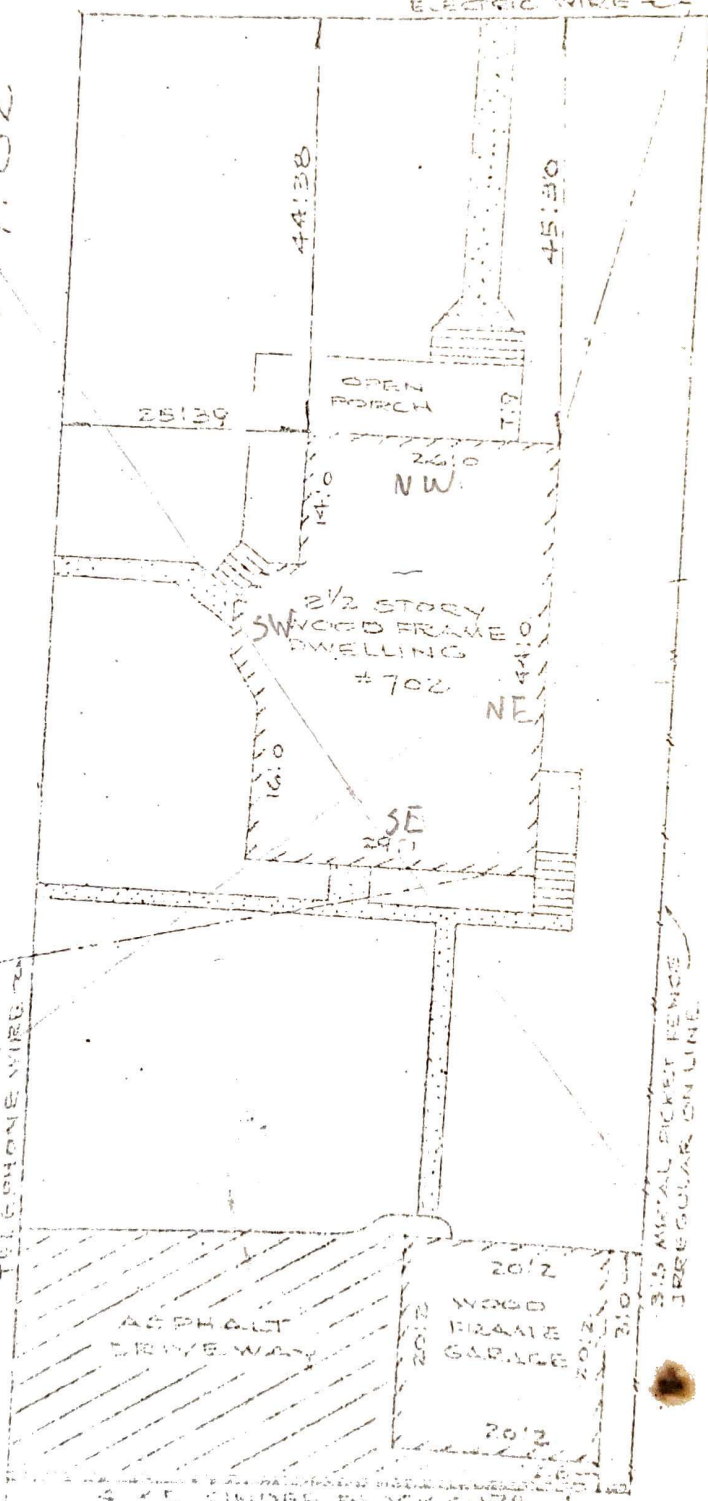
ELECTRIC WIRE

SOUTH CHESTNUT STREET
66 FT.

ASPHALT PAVED CONCRETE CURB
(ALSO KNOWN AS CHESTNUT STREET)

149' 82"

149' 73"



N 53° - 34' W

S 51° - 32' E

S 35° - 46' W 60' 68"

SURVEY OF PROPERTY

702 EAST BROAD STREET, TOWN OF WESTFIELD, UNION COUNTY, NEW JERSEY

EAST BROAD STREET

WIDTH VARIES

ASPHALT PAVED CONCRETE CURB
(ALSO KNOWN AS BROAD STREET)

N 55° - 59' E 66' 00"

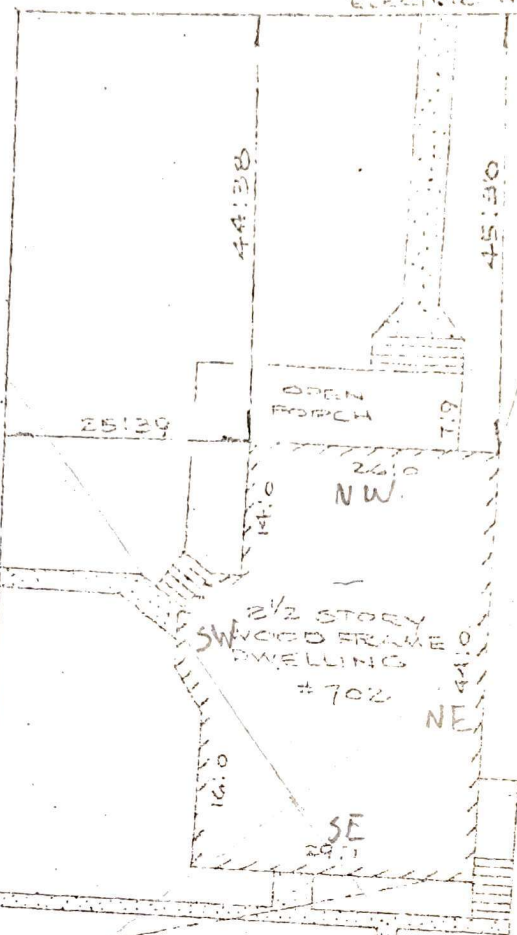
ELECTRIC WIRE

SOUTH CHESTNOT STREET
66 FT.

ASPHALT PAVED CONCRETE CURB
(ALSO KNOWN AS CHESTNOT STREET)

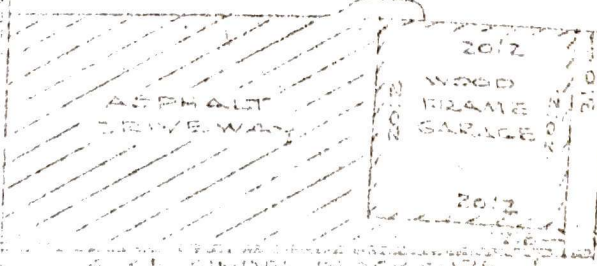
149' 82"

149' 73"



N 53° - 34' W

TELEPHONE WIRE



3.00 METAL PICKET FENCE
18" RIGID CONCRETE LINE

S 51° - 32' E

S 55° - 46' W 60' 68"

SURVEY OF PROPERTY

702 EAST BROAD STREET, TOWN OF WESTFIELD, UNION COUNTY, NEW JERSEY

UPSTAIRS DINING

EAST BROAD STREET

WIDTH VARIES

ASPHALT PAVED CONCRETE CURB
(ALSO KNOWN AS BROAD STREET)

N 35° - 59' E 66:00'

ELECTRIC WIRE

SOUTH CHESTNUT STREET
66 FT.

ASPHALT PAVED CONCRETE CURB
(ALSO KNOWN AS CHESTNUT STREET)

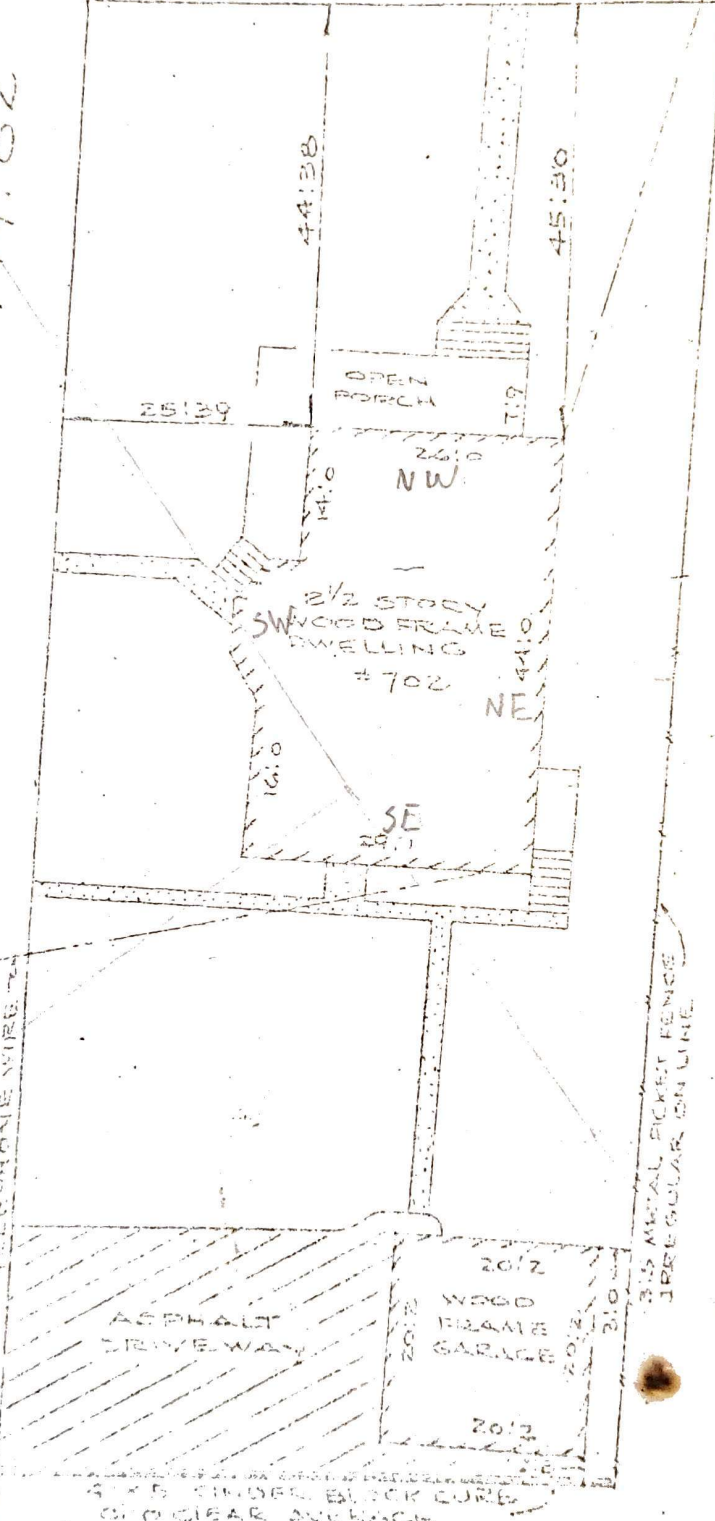
149:82

149:73

N 53° - 34' W
TELEPHONE WIRE

3 1/2" METAL PICKET FENCE
IRREGULAR ON LINE

S 51° - 32' E



S 35° - 46' W 60:68

SURVEY OF PROPERTY

62 EAST BROAD STREET, TOWN OF WESTFIELD, UNION COUNTY, NEW JERSEY