



71 SHREWSBURY DRIVE  
LIVINGSTON, NJ





Welcome to 71 Shrewsbury Drive in Livingston. This exquisite 4 bedroom, 3 full Bath home features fantastic details, ample natural light and expansive space throughout. Enjoy this private space set back on expansive property with proximity to top notch schools, shopping and restaurants.

Drive up and be amazed by all that this home has to offer! The beautiful paver driveway and walkway feature a custom mat heating system that will be sure to amaze you in the cold and snowy months! Up the walkway you will find beautiful glass double entry doors that invite you into the home. Enter into the beautiful sundrenched foyer featuring tile floor, Double Door Coat Closet, and staircase to the Lower Level. Prepare to be delighted as you flow into the Living Room featuring warm hardwood floors, recessed lighting, ample natural light and access to the large deck and private backyard. Off the Living Room you will find the Sophisticated Dining room that features a chandelier with detailed medallion, recessed lighting and warm hardwood floors. With access to the deck and backyard this is the perfect space for seamless indoor/outdoor dining.





Luxurious relaxation abounds in the Family Room which features hardwood floors and a gas fireplace with custom built-in shelving on either side. Off the Family room you will find the top-notch Kosher Eat-In Kitchen featuring warm cabinetry with quartz countertops and stunning black JennAir appliances (double built-in oven, 4 burner range, 2 dishwashers, 2 sinks and built-in refrigerator). This amazing space includes a double pull-out pantry, sun-drenched breakfast area and access to the Laundry/Mud room.





Ready to retire for the evening? The First Level bedrooms are accessed via an inviting hallway with warm hardwood floors, recessed lighting and double door linen closet for additional storage. Serenity and privacy abound in the Primary Bedroom Suite featuring hardwood floors, natural light from the windows, a Double Door Closet and a walk-in closet so that everything can be neatly tucked away. The newly renovated Primary Bath is sure to impress with a crisp design and a custom double vanity with walnut cabinets. Two additional bedrooms are steeped in sunlight with generous closets and a well-appointed full hallway bath featuring a jacuzzi tub.



And that's not all! Get ready to entertain in the lower level of this home! Enjoy a large Recreational Room with a built-in bar complete with a sink and back bar. This space offers plenty of storage and functional space for entertaining, an exercise room, game room or a night of movie watching. The Lower Level also features a Home Office perfect for your next Zoom meeting and an additional bedroom perfect for guests or an au pair. A Full Bath completes this level. Don't miss the serenity of the backyard with an expansive deck, flat backyard and mature landscaping. This is sure to be the spot for entertaining and al fresco dining. The two-car garage features additional storage as well as a Tesla electric charger.

This house is perfect for those looking to be close to blue ribbon schools, universities, NYC transportation, restaurants and shopping!

# INSIDE & OUT

## FIRST LEVEL

- Entry Foyer featuring double entry doors, tile flooring, double coat closet, semi-flush mount lighting fixture, staircase to the Lower Level
- Living Room featuring hardwood floors, recessed lighting, baseboard molding, crown molding, door with access to wood deck
- Dining Room featuring hardwood floors, chandelier with detailed medallion, recessed lighting, door with access to wood deck, two ceiling to floor windows, crown molding, baseboard molding
- Family Room featuring gas fireplace with built-in shelving on either side, design mantel, hardwood floors, ceiling fan, recessed lighting, two windows, crown molding, baseboard molding
- Eat-In Kitchen featuring tile floors, quartz countertops, black JennAir built-in double oven, JennAir four-burner range, two sinks, two black JennAir dishwashers, built-in JennAir refrigerator and freezer, recessed lighting, double pantry with pull out shelves, natural wood cabinetry, natural tile backsplash, breakfast area featuring pendant light fixture and oversized windows, access to Laundry Room/Mud Room
- Laundry Room featuring tile flooring, cabinetry, shelving, storage, flush mount lighting, access to outside
- Hallway off of Entry Foyer leading to Bedrooms featuring hardwood floors, double linen closet, crown molding, baseboard molding
- Primary Bedroom Suite featuring hardwood floors, walk-in closet, one Double Door closet, three windows featuring built-in blackout shades, recessed lighting, crown molding, baseboard molding
- Primary Bathroom featuring white tile floors, white textured tile wall design, water closet, shower with sliding glass door, stone style tile floor, white tile walls, three mirrored medicine cabinets, recessed lighting, double vanity with natural wood cabinets, one window with built-in shade

## LOWER LEVEL

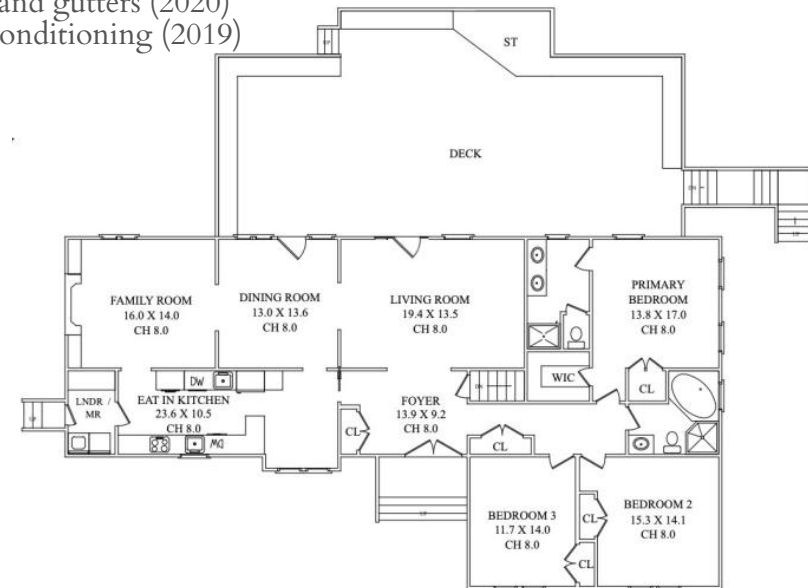
- Carpeted staircase to the Lower Level
- Access to two-car garage with electric Tesla charger and built-in woodworking bench
- Large Recreation Room featuring tile floor, wainscot ceiling, recessed and pendant lighting, natural wood dry bar with wet bar behind, access to the driveway
- Three closets
- Home Office featuring faux wood tiles, wainscot ceiling, recessed lighting, access to bedroom
- Bedroom #4 featuring faux wood tiles, wainscot ceiling, two closets, one window, recessed lighting and access to Recreation Room and office
- Lower Level Bath featuring tile flooring, wainscot ceiling, natural wood vanity, vanity and recessed lighting

## FRONT & BACK YARD

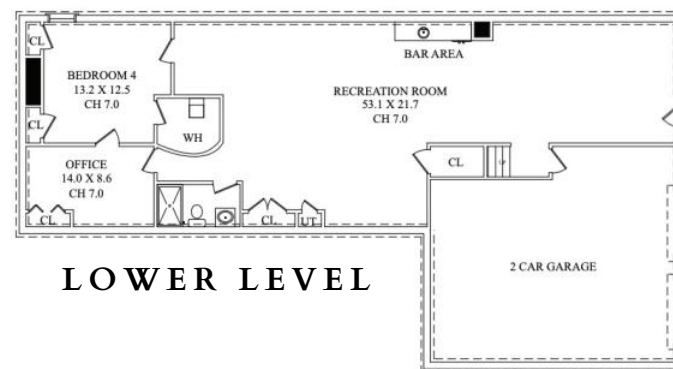
- Paver driveway featuring heated mats underneath
- Paver stairs to front door with portable heated mats to be placed on top of stairs
- Paver stair landings featuring built-in heated mats underneath
- Mature landscaping
- Two-car garage
- Large Wood deck with built-in bench with storage
- Privacy gates for driveway
- Built-in gas line for outdoor grill

## UPGRADES

- New Roof and gutters (2020)
- New Air Conditioning (2019)



**FIRST LEVEL**



**LOWER LEVEL**

*NOT TO SCALE - The floor plan is provided for illustration purposes only. Room positions and dimensions are approximate and should be independently measured for accuracy.*



CELL: 973.936.9129

OFFICE: 973.376.0033 x101

EMAIL: [info@sueadler.com](mailto:info@sueadler.com)

[sueadler.com/71Shrewsbury](http://sueadler.com/71Shrewsbury)

**sueadler**  **team**  
THE #1 KELLER WILLIAMS TEAM IN NEW JERSEY

**kw** PREMIER  
PROPERTIES  
KELLERWILLIAMS.