



292 MAPLE STREET  
NEW PROVIDENCE, NJ



Enchanting 4 bedroom, 3 Bath modern farmhouse situated beautifully on a desirable block in sought after New Providence! Picture perfect with many of the gorgeous original architectural details of this 1900's home left intact. With an exceptional location close to NYC transportation, schools and recreation, 292 Maple Street is waiting to be called home.

Drive up the tree-lined street and become transfixed by the home's charming curb appeal. A lovely front porch creates a warm and welcoming vibe. Enter through the gracious front door to the bright and airy Foyer. You are sure to be impressed by the original coffered tin ceiling and a decorative column. Move into the Living Room with an out of this world original fireplace built with floor to ceiling stone sourced from a local quarry. A beamed ceiling contributes to the cozy charm. Working from home is a dream in the lovely Office with a gorgeous coffered ceiling and deep moldings. Next door, don't miss a cheery and convenient bedroom where the sun pours in. Flow easily into the Gourmet Chef's Kitchen addition that will impress any chef. Crisp white custom cabinets, Italian soapstone countertops, a fantastic farm sink and top of the line stainless steel appliances, including an amazing double oven, are the best in form and function. A large island provides plenty of prep space and room to serve the kids. And as if that wasn't enough, don't miss the dreamy Dining Area encased within a bay of windows and providing exquisite views of the outdoors.



Laundry is a pleasure and clutter is kept out of sight in the desirable Laundry/Mud Room. A tasteful Full Bathroom and a Rear Porch round out the First Level. Ready to retire for the evening? Flow up the stairs to the splendid Second Level where you are greeted by a bonus room with built-in bookshelf, tasteful chair rail trim and ample space for an office or sitting area! Enjoy the Primary Bedroom which features gleaming hardwood floors and a corner built-in. Updated primary bath is sure to impress with crisp white tile surround and a modern pedestal sink. Bedroom #2 featuring two windows and a double door closet. Ensuite Bedroom #3 with lots of natural light.

Close to highly rated schools, transportation to NYC, and parks and recreation, 292 Maple Street is an absolute charmer and a must see!



# INSIDE & OUT

## FIRST LEVEL

- Entry Foyer featuring hardwood floors, original tin coffered ceiling with decorative inset, lantern, Closet, staircase to Second Level, plantation shutters, original decorative column
- Living Room featuring hardwood floors, original beamed ceiling, original fireplace with floor to ceiling stone surround (stone sourced from quarry on the street) and tile hearth, baseboard molding, crown molding, bay of windows/window seat, plantation shutters, sconces
- Gourmet Chef's Kitchen featuring hardwood floors, crisp white custom cabinetry including glass door cabinetry, black Italian soapstone countertops, subway tile backsplash, porcelain farm sink, island with beadboard detail and seating for 4, recessed lighting, pendant lighting over island, breadbox, high-end stainless steel appliance package (Bosch/Thermador), Open Eating area with bay of windows, chandelier
- Laundry/Mud Room featuring tile flooring, hook storage, Closet, double door Laundry Closet, door to backyard
- Bedroom #4 featuring hardwood floors, sconces, baseboard molding, crown molding, Closet
- Office featuring French door at entry, hardwood floors, coffered ceiling, baseboard molding, crown molding
- Full Bathroom featuring tile flooring, tile walls, vanity, shower over tub, medicine cabinet

## SECOND LEVEL

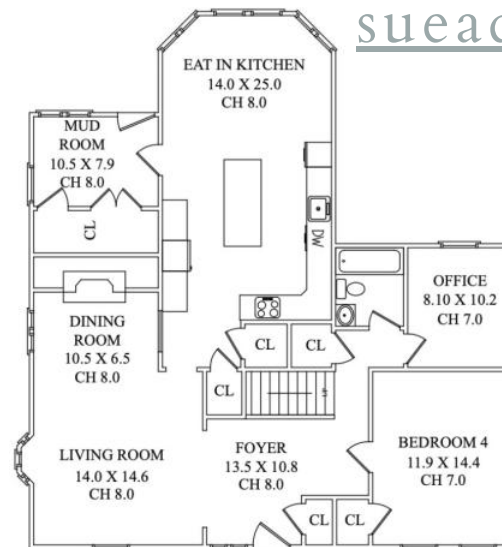
- Carpeted staircase to Second Level
- Second Level Bonus Room featuring carpeting, built-in bookcases, and chair rail
- Primary Bedroom featuring hardwood floors, baseboard molding, corner built-in cabinet, and expansive and bright walk-in closet
- Updated Primary Bath with crisp white tile and pedestal sink
- Bedroom #2 featuring carpeting, double door Closet, baseboard molding, baseboard molding, wood blinds
- Ensuite Bedroom #3 featuring carpeting, Closet, baseboard molding, blinds
- Ensuite Bath featuring tile flooring, vanity, medicine cabinet, sconce, shower with tile surround

## OUTSIDE

- Front porch
- Professionally landscaped with irrigation system and waterfall by porch
- New porch columns and stairs 3 years ago
- paved driveway with ample parking space
- Rear porch (new 2012)

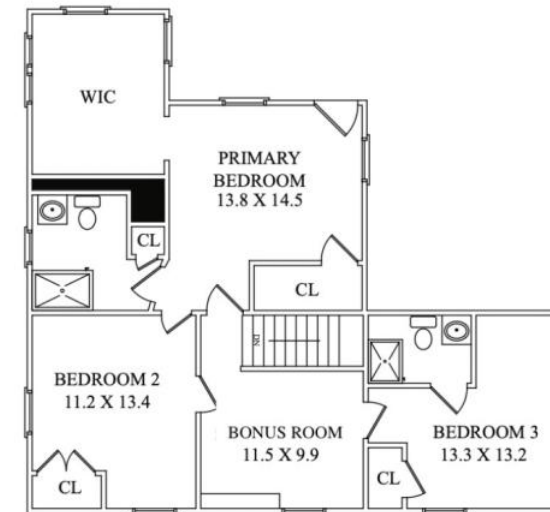
## UPGRADES

- Kitchen and MudRoom addition 2012
- New windows, entire house (2012)
- Moldings throughout
- 2nd Level HVAC (2021)
- Updated Second Level (2021)



FIRST LEVEL

[sueadler.com/292Maple](http://sueadler.com/292Maple)



SECOND LEVEL

CELL: 973.936.9129

OFFICE: 973.376.0033 x101

EMAIL: [info@sueadler.com](mailto:info@sueadler.com)