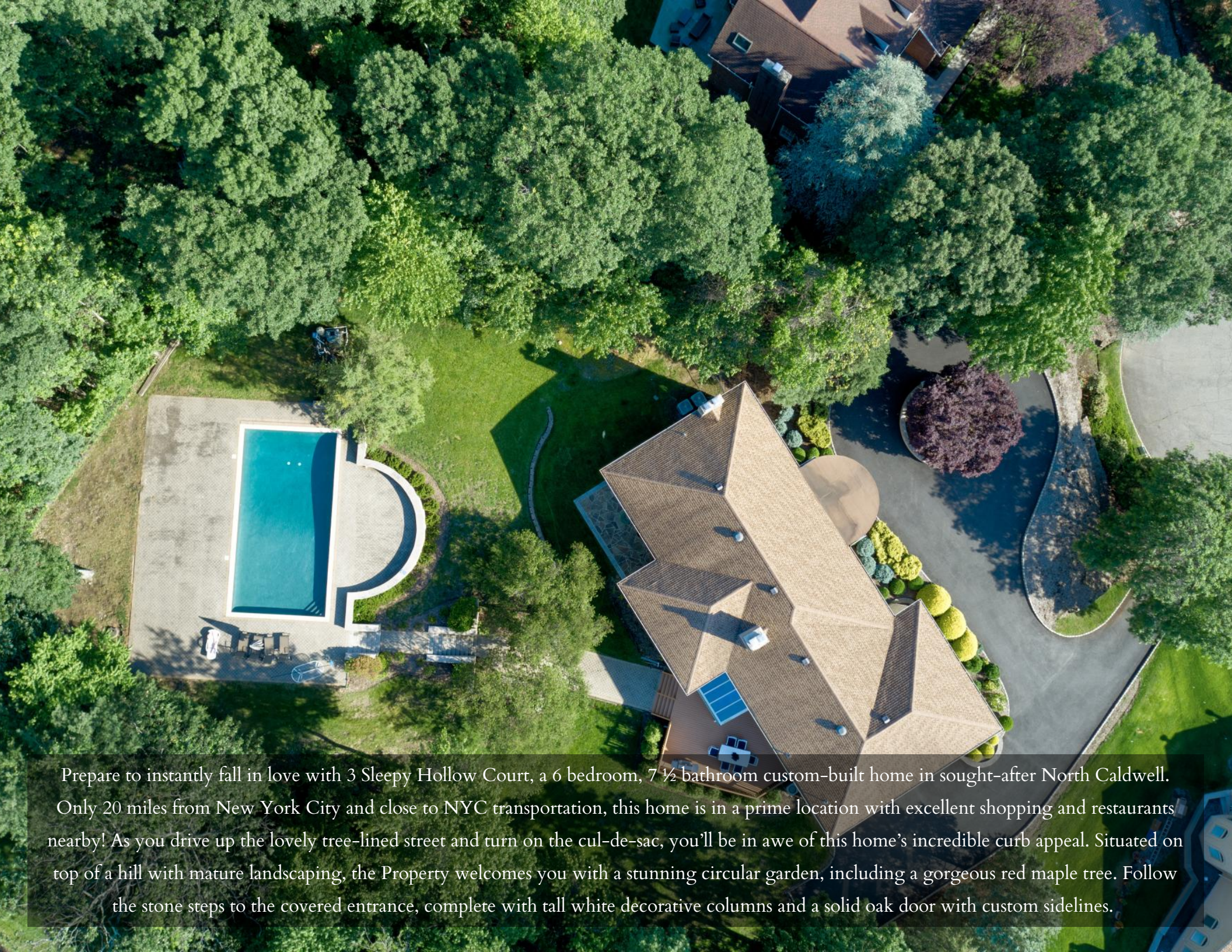




3 SLEEPY HOLLOW COURT  
NORTH CALDWELL, NJ



Prepare to instantly fall in love with 3 Sleepy Hollow Court, a 6 bedroom, 7 ½ bathroom custom-built home in sought-after North Caldwell. Only 20 miles from New York City and close to NYC transportation, this home is in a prime location with excellent shopping and restaurants nearby! As you drive up the lovely tree-lined street and turn on the cul-de-sac, you'll be in awe of this home's incredible curb appeal. Situated on top of a hill with mature landscaping, the Property welcomes you with a stunning circular garden, including a gorgeous red maple tree. Follow the stone steps to the covered entrance, complete with tall white decorative columns and a solid oak door with custom sidelines.



Follow the stone steps to the covered entrance, complete with tall white decorative columns and a solid oak door with custom sidelines. Step inside to the breathtaking Entry Foyer with gleaming black granite floors, soothing hues, and a one-of-a-kind custom motorized chandelier. Take in the ceiling height, the stately main staircase, and the rooms beyond. Two coat closets offer plenty of room for you to neatly tuck away your jackets and backpacks.



Enter the blissful, sun-drenched Living Room where there's a wood-burning fireplace, so much room for entertaining guests, and easy access to the flagstone patio. Flow easily into the luminous Dining Room with a chair rail design, a statement chandelier, and plenty of room to host family gatherings. Across the hall, the Great Room boasts soaring ceilings and a chic wood-burning fireplace with a marble hearth that makes it the perfect area to cozy up and dive into a new book. This room is beautifully finished with an oversized architectural window and access to the stone patio and backyard. Need to work from home? The serene Home Office steeped in sunlight is ideal for all your Zoom calls.





When it's time to eat, make your way to the Gourmet Chef's Kitchen which features sleek cream-colored custom Poggenpohl cabinets with lots of pull-outs, a large center island with storage, and stunning black granite countertops. Top-of-the-line appliances (2 Sub Zero refrigerator and freezers, a Thermador Cooktop, Modern Main Double Oven, and a Thermador dishwasher) a butler's area complete with a Thermador beverage refrigerator, and a sunroom/sitting area complete the heart of the home. In the Back Foyer, you will find a Full Bathroom designed for someone who wants to take a shower when coming in from the pool, a spacious first floor Laundry Room with cabinets for extra storage, an Au Pair suite, complete with a Full Bathroom for privacy, additional walk-in-closet space, and a back staircase.



---

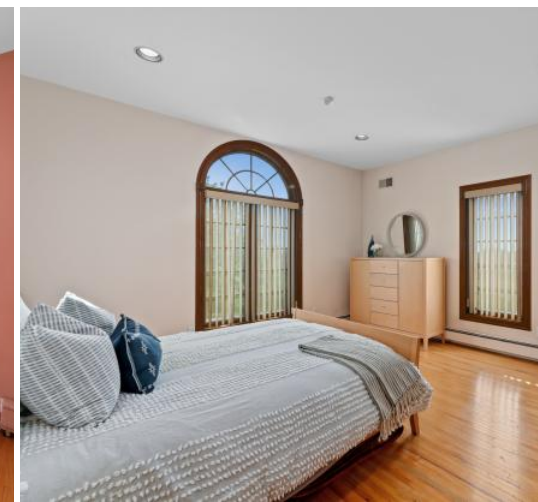
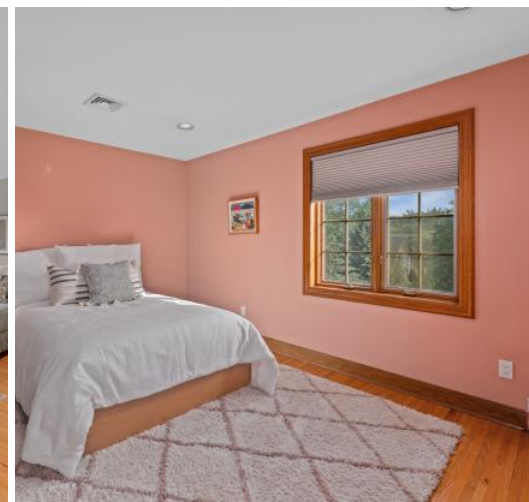
---

When it's time to retire for the evening, travel up the stately staircase to the second floor with five spacious bedrooms (all ensuite) and five full baths. Drenched in sunlight, the luxurious Primary Bedroom has a dramatic ceiling inlay and a spacious balcony. The Primary Suite is functionally designed with the BEST custom Walk-In Closet and a spa-like bathroom complete with huge double vanity, two-person Jacuzzi, glass steam shower door, and stunning marble floors. Four additional large-sized bedrooms (all ensuite) are also steeped in sunlight and include huge closets. Attic access can be found in one of the bedrooms.

The Lower Level, with access to the three-car garage, adds tremendous functional space to the home. A large unfinished Recreation Room is just waiting for the new owner to put their finishing touches on.

---

---







Another gem of the home is the idyllic exterior. From the fully fenced-in backyard that seems to go on forever, to the two patios located by the kitchen, and the wood deck, the space is perfect for entertaining. Head up the steps to the stunning in-ground swimming pool that adds a vacation-like atmosphere. For additional entertainment space, relax on the paver patio that surrounds the pool.

A house of this caliber, meticulously taken care of by the original owner for 30 years, rarely comes on the market. With its proximity to NYC, easy access to Midtown Direct train service, sought-after school district, and convenience to fantastic shopping and restaurants, 3 Sleepy Hollow Court is just waiting for you to make it your next home!

# INSIDE & OUT

## FIRST LEVEL

- Foyer featuring black granite headed floor, grand staircase to the second level, two coat closets, motorized crystal chandelier, recessed lighting
- Living Room featuring hardwood floors, wood-burning fireplace, recessed lighting, surround sound, five windows, access to the backyard, crown molding, baseboard molding
- Dining Room featuring hardwood floors, three double windows, surround sound, door to butler's area in kitchen, crystal chandelier, two crystal sconces, textured wallpaper, chair rail design, recessed lighting, crown molding, baseboard molding
- Great Room/ Family Room featuring hardwood floors, wood-burning fireplace, Calcutta marble hearth, large stone design around the fireplace, recessed lighting, double French doors to back yard, four windows, surround sound, large architectural window
- Home Office featuring hardwood floors, recessed lighting, two windows, baseboard molding
- Powder Room featuring black granite tile floors, mirrored walls, pedestal sink, recessed lighting, one window
- Kitchen featuring black granite floors, Poggenpohl cream custom cabinets with pull-outs, Two subzero refrigerators and freezer, Thermador cooktop, Modern Main double ovens, Thermador dishwasher, recessed lighting, hanging light over kitchen table area, two windows over the sink, granite countertops, large center island with storage, Butlers are with granite countertops, cream-colored custom cabinets, Sub Zero beverage refrigerator, second sink, five large windows with a glass ceiling for sunroom feel, sliding glass doors to wood deck
- Back Foyer featuring back stairs to the second level, black granite floors, access to one-bedroom, access to a full bathroom, double pantry, two walk-in closets, access to the lower level, access to the backyard, access to the laundry room, two windows
- Full Bathroom (used for when you come in from the Pool) featuring Calcutta marble floor, shower with sliding glass doors and marble tile, one window, sink with vanity, recessed lighting
- Laundry Room featuring black granite floors, washer, dryer, one window, white countertops, white cabinets, slop sink, flush mount lighting
- Bedroom #1 (ensuite bathroom) featuring hardwood floors, three windows, recessed lighting, double closet, ensuite bathroom with white tile floor, shower, one window, sink with vanity, recessed lighting

## SECOND LEVEL

- Foyer featuring hardwood floors, recessed lighting, three double closets, baseboard molding
- Primary Bedroom Suite featuring hardwood floors, sitting area with gas fireplace and double French doors to balcony, recessed lighting, walls paper, linen closet, double closet, walk-in closet, two windows

- Primary Bedroom Bathroom featuring marble floor, five windows, two-person Kohler Jacuzzi tub, steam shower with marble tile, bench and glass door, double vanity, wired for surround sound, recessed lighting, water closet
- Bedroom #1 (ensuite) featuring four windows, hardwood floors, recessed lighting, walk-in closet, baseboard molding, ensuite bathroom with tile floors, tub/shower with sliding glass doors, sink with vanity, recessed lighting, one window
- Bedroom #2 (ensuite) featuring hardwood floors, four windows, walk-in closet, baseboard molding, ensuite bathroom with tile floors, wallpaper, tub/shower with sliding glass doors, sink with vanity, one window, recessed lighting
- Bedroom #3 (ensuite) featuring hardwood floors, three windows, walk-in closet with laundry shout, baseboard molding, ensuite bathroom with tile floor, tub/shower with sliding glass doors, wallpaper, one window, recessed lighting
- Bedroom #4 (ensuite bathroom) featuring hardwood floors, two windows, walk-in closet with laundry shout, attic access, recessed lighting, baseboard molding, ensuite bathroom with tile floors, tub/shower with sliding glass doors, sink with vanity, one window, recessed lighting

## LOWER LEVEL

- Large unfinished Recreation Room, two windows, utility access
- Access to the three-car garage with cement floors, large storage closet, utility access

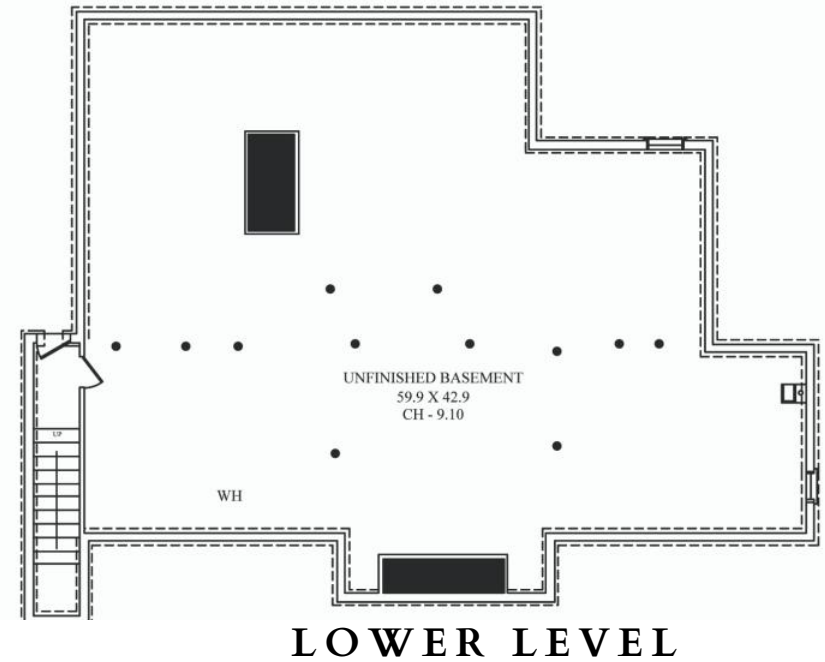
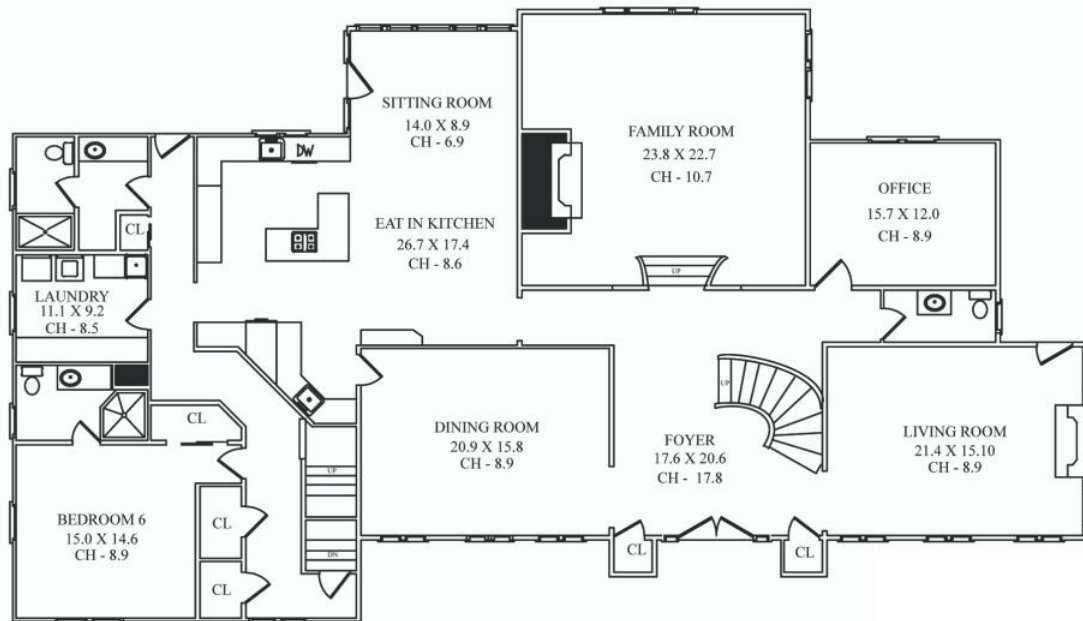
## EXTERIOR

- Brick façade
- Mature landscaping
- Covered entrance with decorative columns
- Circular driveway and driveway leading to the three-car garage
- Large landscaped circular garden with a large red leaf maple tree in the center of the circular drive
- Irrigation system in front and back
- Two stone patios
- Brick steps up to the pool (22x42)
- Paver Patio surrounding the pool area

## UPGRADES

- New driveway (2020)
- Roof 10 years old
- Deck painted (2020)

# THE FLOORPLAN



NOT TO SCALE -The floor plan is provided for illustration purposes only. Room positions and dimensions are approximate and should be independently measured for accuracy.



CELL: 973.936.9129

OFFICE: 973.376.0033 x101

EMAIL: [info@sueadler.com](mailto:info@sueadler.com)

[sueadler.com/3SleepyHollow](http://sueadler.com/3SleepyHollow)

