

kw PREMIERE
PROPERTIES
KELLER WILLIAMS
Each Keller Williams office is individually owned and operated.

sueadler
THE #1 KELLER WILLIAMS TEAM IN NEW JERSEY



564 RIVER ROAD
CHATHAM, NJ



Welcome to 564 River Road! Don't miss this extraordinary home perfectly blending timeless craftsmanship with modern amenities and enveloped by one of the most serene and private backyards in Chatham! This picture-perfect 3 Bedroom, 2.5 Bath Colonial has a modern farmhouse vibe and feels like your own country retreat. With a fabulous open floor plan, stunning natural views and fantastic craftsmanship and renovations throughout, 564 River Road is an absolute dream.

As you arrive, take in the home's magical presence as it sits majestically among thoughtful landscaping that includes a fabulous use of stone, meticulous landscaping, and a handsome bluestone staircase and walkway leading to the graceful covered front entry. Enter through the warm front door and prepare to be transfixed by this wonderful home. The Entry Foyer flows easily into the bright and elegant Living Room with an exquisite marble fireplace flanked by custom millwork, gleaming hardwood floors, and a wall of double French doors and windows opening up to the deck and outdoor oasis. A tranquil and lovely Sun Room off the Living Room is the perfect spot to curl up with a novel or to perform your morning yoga. Get ready to host family gatherings and dinner parties in the formal Dining Room with superb moldings and oversized windows so that the sunlight literally pours in.



The Gourmet Chef's Kitchen is truly a cook's dream complete with crisp, white custom cabinetry, quartz countertops, stainless steel appliances, and a Breakfast Area with another set of double French doors taking advantage of the outstanding backyard views. The backyard is truly unparalleled in its class and is a bird watcher and nature lover's paradise with its Rear Porch, enormous Deck for entertaining, built-in planters, and tiered gardens where you are completely enveloped by breathtaking blooms. Whether it is al fresco dining, cocktails with friends or an evening fire pit, there is room for it all. An additional flat grassy area means there is plenty of space. Back inside, telecommuting is a delight in the tranquil Office with elegant pocket doors and a fabulous Built In Desk Area with plenty of storage and room to spread out. A Renovated Powder Room rounds out the fabulous First Level.



Ready to retire for the evening? Proceed up the open and airy original staircase to the landing providing beautiful views of the outdoor oasis. Luxury abounds in the spacious Primary Bedroom with California Closets Built-In, two additional Closets, and windows at two exposures so that the room radiates with light. Two additional bedrooms are steeped in sunlight and include generous closets and large windows. Laundry is an absolute pleasure in the conveniently located Second Floor Laundry Room. A tastefully Renovated Full Hall Bathroom rounds out the Second Level. Walk up a few steps and bring your ideas to the Third Level. Tons of space and vaulted ceilings could accommodate additional bedrooms, a Play Room, and/or an Artist's Studio.



And that's not all! The staircase to the Lower Level leads to an expansive Recreation Room with charming beadboard wainscoting and plenty of room for movie watching, teen hangouts, and children's arts and crafts. A 1 car garage opens up to a perfect Mud Room Area. Prepare to be blown away by the extraordinary Full Bath with marble tile throughout, a fabulous vanity, heated towel rack, and a sleek modern shower, with jets and a rain showerhead, that rivals any spa.

Words truly do not do this home and its property justice. 564 River Road is a dream home in every way. Just minutes from top-notch schools, downtown Chatham shopping and restaurants, and 10 minutes to Summit Train Station for direct to NYC, this home must be seen to be believed!

I N S I D E & O U T

First Level

- Entry full lite glass door
- Entry Foyer featuring hardwood floors, chandelier, crown molding, baseboard molding, original staircase with a runner to Second Level
- Living Room featuring hardwood floors, decorative pillars open to Entry Foyer, gas fireplace with custom millwork mantle and marble surround and hearth, recessed lighting, semi-pendant light fixtures, crown molding, baseboard molding, double French doors with full-length windows on each side out to Deck, oversized windows
- Sun Room featuring hardwood floors, oversized windows at 2 exposures, recessed lighting, crown molding, baseboard molding, custom roman shades
- Dining Room featuring hardwood floors, ceiling fan/light fixture, recessed lighting, oversized windows
- Office featuring pocket French doors at entry, wall to wall custom built-in Desk Area with open and concealed storage and large workspace, hardwood floors, oversized windows at 2 exposures, crown molding, baseboard molding, recessed lighting, semi pendant flush mount light fixture
- Gourmet Chef's Kitchen featuring hardwood floors, custom cabinetry including glass door cabinetry, quartz countertops, double French doors out to Deck, custom window treatments, farm sink, oversized windows, LG stainless refrigerator/freezer, Kenmore stainless 4 burner oven/range, Kenmore stainless dishwasher, Breakfast Area, recessed lighting, crown molding, baseboard molding
- Powder Room featuring pedestal sink, decorative tile flooring, subway tile wainscoting, pendant light fixture
- Rear hallway with door to the back deck

Second Level

- Second Floor Landing featuring hardwood floors, chandelier, flush mount light fixture, crown molding, baseboard molding, Linen Closet with floor to ceiling shelving
- Primary Bedroom featuring hardwood floors, ceiling fan/light fixture, crown molding, baseboard molding, 2 Closets, California Closets Built In Armoire, oversized windows at 2 exposures
- Full Hall Bath featuring tile flooring, washbasin sink, tile wainscoting with decorative border, tub/shower combination with tile surround, fan, semi flush mount light fixture, 2 light sconces, crown molding, baseboard molding, built-in upper cabinet
- Bedroom 2 featuring hardwood floors, ceiling fan/light fixture, oversized windows at 2 exposures, chair rail, accent wall with wallpaper, crown molding, baseboard molding, Closet
- Bedroom 3 featuring hardwood floors, ceiling fan/light fixture, oversized windows at 2 exposures, crown molding, baseboard molding, Closet
- Laundry Room featuring Samsung stainless front loader washer and dryer, tile flooring, window, baseboard molding, flush mount light fixture, door to the Third Level

Third Level

- Unfinished with potential for additional bedrooms, Artist's Studio, and/or Play Room

Lower Level

- Wood staircase to Lower Level
- Landing/Mud Room Area featuring tile flooring, built-in bench with storage, beadboard wainscoting, Payne ductless wall air conditioner, door to the garage
- 1 Car Garage with LiftMaster carriage style door

- Recreation Room featuring beadboard wainscoting, carpeting, recessed lighting, crown molding, baseboard molding, oversized windows with blinds, decorative pillars, built-in open shelving, hidden utility storage
- Full Bath featuring marble floor tile, built-in vanity with marble countertop, floor to ceiling tiled walls, fan, recessed lighting, sconces, heated towel rack, barrier-free shower with glass enclosure, rain showerhead, spray jets, handheld shower and bench, Linen Closet (outside)

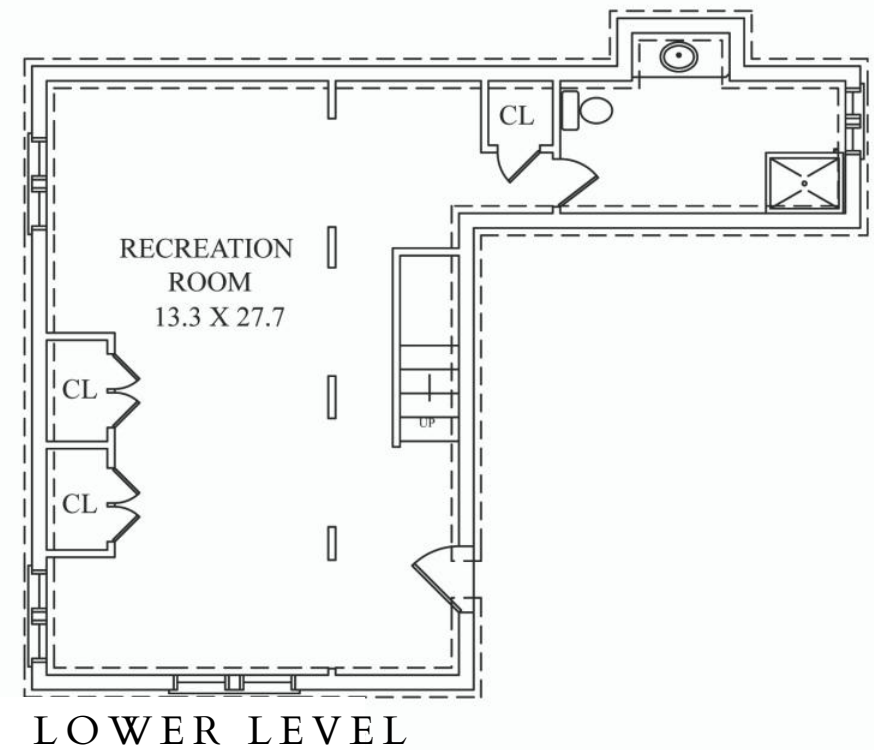
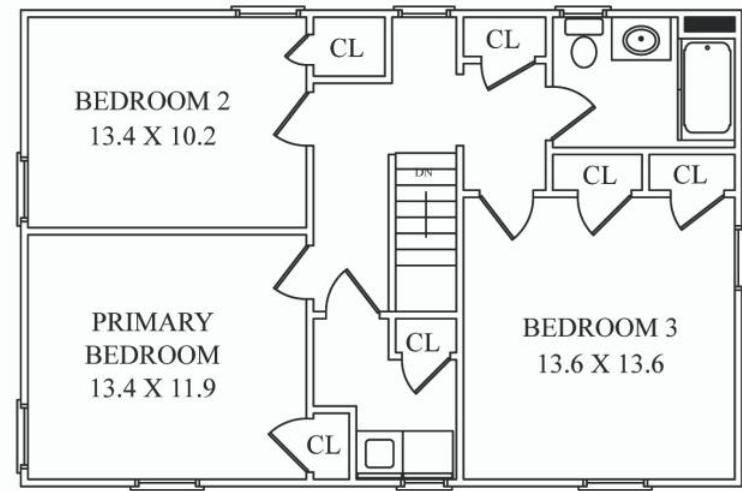
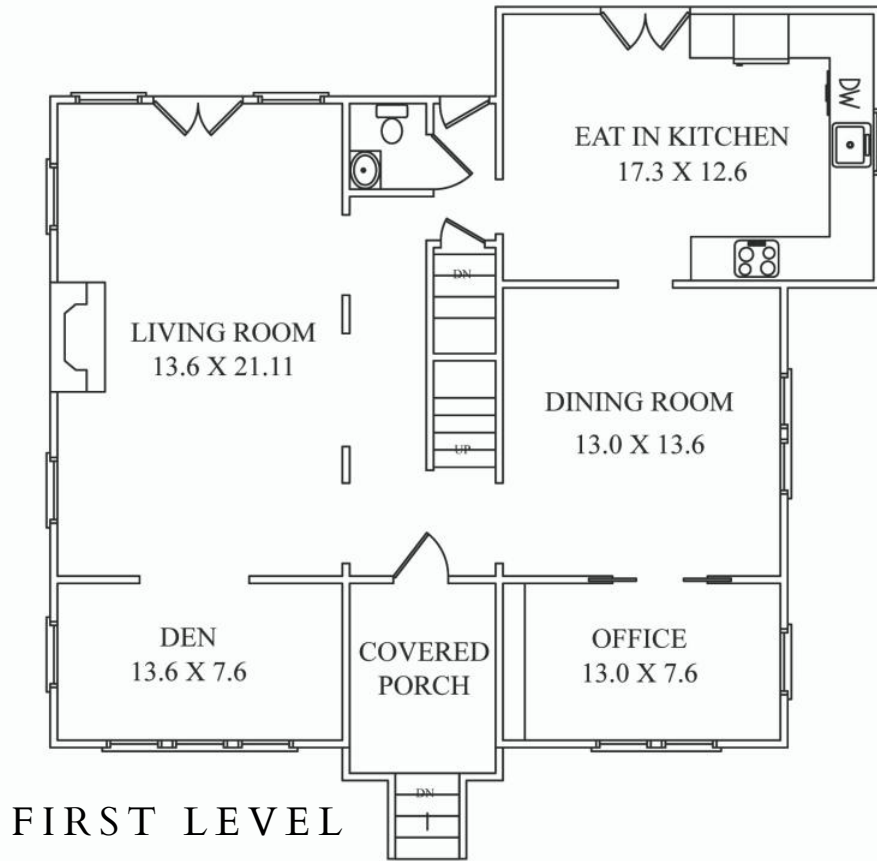
Front / Backyard

- Professionally landscaped with exquisite stone and bluestone hardscaping, perennial blooming landscapes, and stone sculpture
- Lower area with stone walls and flowering vinca groundcover
- Bluestone staircase and pathway to front door encased by grass landscaped beds, and stone retaining walls
- Covered Front Entry with tiled landing and exterior lanterns
- Fully fenced in yard with attractive maintenance-free fencing
- Side wood staircase leading to picket fence and arbor with wisteria
- 2nd Picket fence and gate leading to the spacious flat, grassy side yard
- Covered Rear Porch
- Enormous Trex deck off of Living Room and Kitchen with areas for Dining, Lounging and Fire Pit, built-in planters
- Tiered beds with stone retaining walls for planting
- Paver pathways from deck to front yard
- Large driveway with parking for 3-4 cars
- Irrigation system

Additional Features

- Heat/AC, 2 zones
- Alarm system

THE FLOORPLAN



NOT TO SCALE - This floor plan is provided for illustration purposes only.
Room positions and dimensions are approximate and should be independently measured for accuracy



CELL: 973.936.9129

OFFICE: 973.376.0033 x101

EMAIL: info@sueadler.com

sueadler.com/564River

sueadler 
THE #1 KELLER WILLIAMS TEAM IN NEW JERSEY team

kw PREMIER
PROPERTIES
KELLERWILLIAMS.