

kw PREMIERE
PROPERTIES
KELLERWILLIAMS

Each Keller Williams office is individually owned and operated.

sueadler 
THE KELLER WILLIAMS TEAM IN NEW JERSEY

25 Stoneleigh Park
Westfield, New Jersey



25

Welcome to 25 Stoneleigh Park! Located in one of the most coveted neighborhoods in Westfield, nestled among prestigious homes, you'll find this historic 4 Bedroom, 2.5 Bath STUNNER walkable to Westfield High School, Middle School and Tamaques Elementary. One of Westfield's BEST, historic neighborhoods (park-like setting with active neighborhood association with block parties, cocktail parties, caroling and huge sense of community). Three blocks to fabulous downtown Westfield restaurants, shopping and NYC Train, don't miss this rare opportunity to call this treasure home.



As you enter historic Stoneleigh Park's exclusive enclave and drive up to this home, you immediately know you have arrived somewhere special. A spacious corner lot, meticulous landscaping and a stately covered front entry all add to exceptional curb appeal. Enter through the original front door, flanked by leaded glass sidelites, into the Entry Foyer complete with original hardwood floors and views of the Living and Dining Rooms beyond. A cool two-sided fireplace and rows of windows, at the front and back, where sunlight pours in all contribute to the Living Room's incredible vibe. Whether it's holiday gatherings or reading by the fire, this room exudes comfort and relaxation. Need some quiet time or want to contemplate your day? Look no further than the Home Office located off of the Living Room. A grand bay window, hardwood floors and a cozy fire all make for an incredible workspace. Dinner parties are divine in the Formal Dining room with tremendous natural light and a chic pendant light fixture with drum shade.



◆ Double French doors lead to a sundrenched Family Room with plenty of room for family game night and tv watching. The Family Room connects effortlessly to the Breakfast Room where you can sit by the fireplace and admire the gorgeous backyard. A Coffee/Dry Bar is the perfect spot to fix a cappuccino or mix an evening cocktail. The Breakfast/Family Room boasts double French doors that flow out to the enormous Brick Patio with plenty of room for dining, lounging and conversation. The Patio overlooks the lushly landscaped backyard with cottage gardens, blooming perennials and various areas for play. Don't miss the exquisite She Shed or Man Cave exquisitely designed to match the home, perfect for crafting, watching football or as a yoga retreat. Whether it's al fresco dining or spending time with family and friends, the magical property is unparalleled in its class.

◆



Back inside, both the Dining Room and Breakfast Room flow effortlessly into the stunning Gourmet Chef's Kitchen that will satisfy any chef. Crisp, white custom cabinetry, a spacious Breakfast Bar, quartz countertops and stainless steel appliances make the kitchen exceptional. Tons of custom storage ensures everything will be neatly put away. A tasteful Powder Room rounds out the First Level.





When it's time to retire for the evening, the staircase leads you to the ultra-private and deluxe Primary Bedroom Suite shimmering with natural light. Luxury abounds with a dreamy vaulted ceiling with custom lighting, two deep custom designed closets and a third closet so that everything will be neatly tucked away. A spa-like bath dazzles with marble tile and a sleek glass door shower. The Second Level gets better and better with three additional roomy bedrooms with oversized closets. The bedrooms share the gorgeously renovated Hall Bathroom complete with designer tile throughout. Laundry is an absolute pleasure in the Second Floor Laundry Room with California Closets cabinetry and high-end Bosch washer and dryer. Flow upstairs to the Third Level where you will find cozy Bonus Room/Potential Bedroom 5 perfect as a Play Room, Office or Au Pair Bedroom.





And that's not all! The partially finished Lower Level offers TONS of potential for a Recreation Room, Exercise Room and/or Wine Storage.

With its incredibly prestigious Stoneleigh Park neighborhood, proximity to New York City Train, top notch Westfield schools and convenience to fantastic shopping and restaurants, 25 Stoneleigh Park is an absolute delight.



FIRST LEVEL

- Entry Foyer featuring original front door with leaded glass sidelites, hardwood floors, semi flush mount light fixture with decorative drum shade, baseboard molding, crown molding, staircase to Second Level, Back Door to driveway
- Front to Back Living Room featuring hardwood floors, row of triple windows at front and back, 2 sided modern fireplace, recessed lighting, in ceiling speakers, crown molding with dentil detail, baseboard molding
- Sunroom/Office featuring hardwood floors, bay window, double windows, 2 sided modern fireplace, recessed lighting, in ceiling speakers, crown molding with dentil detail, baseboard molding
- Dining Room featuring hardwood floors, oversized pendant light fixture with drum shades, double French doors to Family Room, baseboard molding, crown molding, triple windows at front
- Gourmet Chef's Kitchen featuring hardwood floors, crisp white custom shaker style cabinetry, quartz countertops, elongated subway tile backsplash, under cabinet lighting, Breakfast Bar, custom hood, recessed lighting, modern staggered glass light fixture, Thor 6 burner stainless oven/range, GE stainless refrigerator/freezer, Frigidaire stainless dishwasher
- Breakfast Room featuring fireplace with floor to ceiling brick surround, hardwood floors, Custom Coffee/Dry Bar featuring custom upper and lower cabinetry, quartz countertops, elongated subway tile backsplash, recessed lighting, ceiling fan, Closet, door to Garage
- Family Room featuring hardwood floors, double windows, recessed lighting, baseboard molding, oversized double French doors and full sidelites to Patio
- Powder Room featuring hardwood floors, wall mount seat, elongated marble subway tile accent wall, baseboard molding, modern "ribbon" light fixture
- 2 Car Garage

LOWER LEVEL

- Partially finished (professional lighting installed) with potential for Recreation Room, Exercise Room and Wine Storage
- Utilities

ADDITIONAL FEATURES

- Original doors and hardware throughout
- Interior lighting professionally designed
- Painted soothing hues throughout
- Sump pump and French drains

SECOND LEVEL

- Second Level Landing featuring hardwood floors, 2 Linen Closets, baseboard molding, crown molding, recessed lighting, staircase to Third Level
- Primary Bedroom Suite featuring hardwood floors, vaulted ceiling at center with rope lighting, 2 oversized Custom Closets, recessed lighting, windows at 2 exposures, 3rd Closet, custom roller shades, window seat, Bathroom featuring pocket door at entry, marble floor tile, pedestal sink, medicine cabinet, 2 windows with custom roller shades
- Primary Bath featuring glass door shower with designer tile surround and rain showerhead, 2 sconces, recessed lighting
- Bedroom 2 featuring hardwood floors, ceiling fan, windows at 2 exposures, Closet, baseboard molding, crown molding, recessed lighting
- Rear Hallway featuring NEW carpeting, built in book shelves, baseboard molding, 2 windows, recessed lighting
- Laundry Room featuring bifold doors, California Closets custom cabinetry, Bosch front loader washer and dryer on stands, recessed lighting
- Full Hall Bath featuring marble floor tile, pedestal sink, medicine cabinet, 2 windows with custom roller shades, glass door shower with designer tile surround and rain showerhead, 2 sconces, recessed lighting
- Bedroom 3 featuring NEW carpeting, Double Sized Closet with custom storage, ceiling fan, windows at 2 exposures, baseboard molding, recessed lighting
- Bedroom 4 featuring NEW carpeting, Double Sized Closet with custom storage, ceiling fan/light fixture, windows at 3 exposures, woven shades, recessed lighting, baseboard molding

THIRD LEVEL

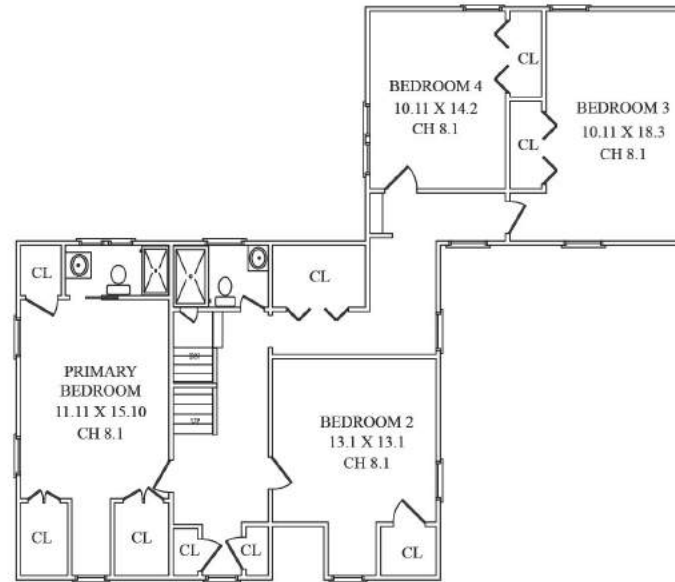
- Hallway featuring hardwood floors, hanging storage, flush mount light fixture
- Bonus Room featuring carpeting, vaulted ceiling, window, flush mount light, sconces

FRONT & BACKYARD

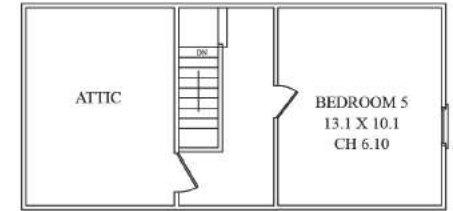
- Professional landscaped with blooming Perennials, cottage gardens, mature specimen trees all offering immense privacy
- Curved front walkway
- Covered Front Entry with brick steps and landing
- Custom, wide wood staircase with shallow treads to Patio
- Oversized Brick Patio with room for dining and lounging
- Flat grassy area for Play
- String lights
- She Shed/Man Cave designed to match existing home

INSIDE & OUT

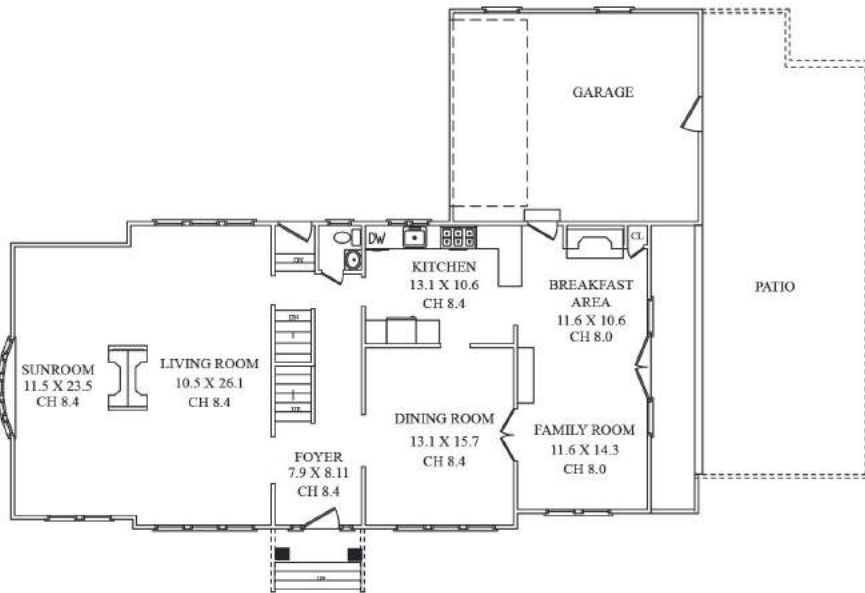
THE FLOORPLAN



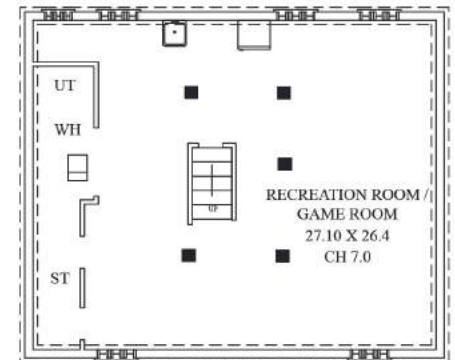
SECOND FLOOR



THIRD FLOOR



FIRST FLOOR



LOWER LEVEL

NOT TO SCALE - This floor plan is provided for illustration purposes only.
 Room positions and dimensions are approximate and should be independently measured for accuracy



CELL: 973.936.9129

OFFICE: 973.376.0033 x101

EMAIL: info@sueadler.com

sueadler.com/25Stoneleigh

sueadler 
THE #1 KELLER WILLIAMS TEAM IN NEW JERSEY **team**

kw PREMIER
PROPERTIES
KELLERWILLIAMS®