

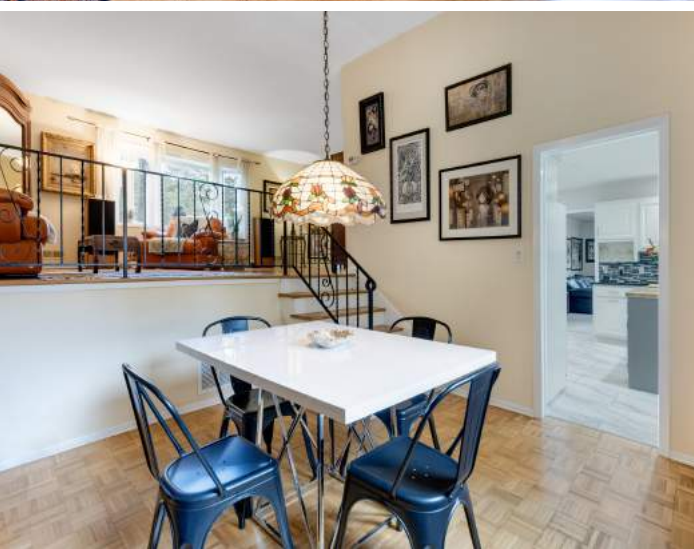
kW PREMIERE
PROPERTIES
KELLERWILLIAMS®

Each Keller Williams office is individually owned and operated.

sueadler 
THE #1 KELLERWILLIAMS TEAM IN NEW JERSEY 

29 CRANE CIRCLE

NEW PROVIDENCE, NJ



Welcome to 29 Crane Circle, a fabulous 4 bedroom, 2.5 Bath Split Level on a coveted, family-friendly block in sought after New Providence steps to Allen W. Roberts Elementary! With a truly open floor plan for easy entertaining and today's living, this house aims to please. Close to NYC transportation (Murray Hill train station), top-notch schools and Route 78, 29 Crane Circle is just waiting to be called home.

Drive up the bucolic street and become transfixed by the home's charming curb appeal. The driveway abuts a quiet cul de sac perfect for unobstructed play. Bluestone stepping stones and a covered front entry all create a warm and welcoming vibe. Enter through the gracious front door to the bright and airy Entry Foyer with a spacious Coat Closet. Walk up a few steps and prepare to be impressed by the sun-drenched Living Room with a huge picture window where the light pours in. This home boasts a truly open floor plan as the Living Room blends seamlessly with the delightful Dining Room boasting a soaring ceiling, chic parquet hardwood floors and an abundance of natural light making it perfect for intimate dinner parties or large gatherings with family and friends. The open layout allows you to flow easily into the Gourmet Chef's Kitchen that really brings the "wow" factor. Crisp white custom cabinets, a NEW tile floor, an island for prep, granite countertops and a Walk In Pantry are all the best in form and function. Enjoy your morning coffee or family meals in the glorious Breakfast Room overlooking the idyllic backyard. Step into the spacious Family Room with NEW carpeting and plenty of room for movie or family game night. Working from home is a dream in the First Level Office with gracious Double French Doors and windows making the room radiate with sunlight.





Walk down a few steps to find the unfinished Lower Level with tremendous potential. A Wine Cellar or an Exercise Room? The possibilities are endless.

Ready to retire for the evening? Walk up the staircase to the elegant Second Floor Landing complete with hardwood floors and a roomy Linen Closet. Wander into the lovely Primary Bedroom Suite featuring two Double Door Closets, soothing hues and a well-appointed bath. Radiant Bedrooms 2, 3 and 4 feature ample closets and abundant windows allowing for plenty of natural light. A lovely Full Hallway Bathroom, with a huge double vanity with a granite countertop, rounds out the Second Floor.

And that's not all! Another show stopper of this home is the idyllic fenced in backyard (.43 acre). There is tons of flat, green space and a lovely Patio with room for grilling and al fresco dining. The backyard makes outdoor activities, hosting a party or relaxing on a summer afternoon a joy.

Close to highly rated schools, transportation to NYC, and parks and recreation, 29 Crane Circle is an absolute must see and will not last!

INSIDE & OUT

FIRST LEVEL

- Entry Foyer featuring front door with decorative leaded glass and sidelites, tile flooring, lantern, baseboard molding, Coat Closet, staircase to Living Room
- Powder Room featuring tile flooring, vanity with granite countertop, semi flush mount light fixture, baseboard molding
- Dining Room featuring parquet hardwood floors, high ceilings, tiffany-style pendant light fixture, baseboard molding, open to Kitchen, 2 windows overlooking backyard
- Gourmet Chef's Kitchen featuring NEW marble look floor tile, crisp white custom cabinetry, open shelving, self-closing doors, granite countertops, mosaic tile backsplash, island with butcher block countertop, Kenmore stainless dishwasher, Kenmore stainless 5 burner oven/range, Broan stainless fan, recessed lighting
- Breakfast Room featuring marble look floor tile, wall of windows and sliding doors overlooking backyard, baseboard molding, Walk In Pantry with pocket door and shelving
- Family Room featuring NEW carpeting, flush mount light fixture, baseboard molding, crown molding, open to kitchen
- Office/Potential Bedroom 5 featuring double French doors at entry, NEW carpeting, Closet, built in open shelving, oversized windows at 2 exposures, ceiling fan/light fixture
- Laundry Room featuring laminate tile flooring, flush mount light fixture, door to Garage
- 2 Car Garage with storage

STEP UP FIRST LEVEL

- Living Room featuring hardwood floors, picture window, baseboard molding, staircase to Second Level, staircase to Dining Room, iron railings

LOWER LEVEL

- Unfinished space with utilities

SECOND LEVEL

- Second Floor Landing featuring hardwood floors, Linen Closet, flush mount light fixture, drop down attic access
- Primary Bedroom Suite featuring hardwood floors, 2 sets of Double Door Closets, ceiling fan/light fixture, baseboard molding, 2 windows, Bathroom featuring vanity with quartz countertop, tile flooring, medicine cabinet, shower with tile surround, vanity lighting, window
- Bedroom 2 featuring hardwood floors, Double Door Closet, windows at 2 exposures, ceiling fan/light fixture, baseboard molding
- Bedroom 3 featuring hardwood floors, Double Door Closet, window, ceiling fan/light fixture, baseboard molding
- Bedroom 4 featuring hardwood floors, Double Door Closet, window, ceiling fan/light fixture, baseboard molding
- Full Hall Bath featuring tile flooring, wall to wall custom double vanity with granite countertop, 2 medicine cabinets, recessed lighting, flush mount light fixture, tub/shower combination with tile surround

FRONT/BACKYARD

- .43 Acre
- Stepping stones to front door
- Covered front entry
- Paver Patio
- Flat, partially fenced yard with blooming perennials

ADDITIONAL FEATURES & UPGRADES

- Maintenance free siding
- Basement waterproofing (2015)
- Newer roof (2014)
- Newer fence (2014)
- Central air conditioning

CELL: 973.936.9129

OFFICE: 973.376.0033 x101

EMAIL: info@sueadler.com

sueadler.com/29Crane