



17 Oaklawn Road
Short Hills, NJ



Welcome to 17 Oaklawn in the heart of Old Short Hill's prestigious Woodfield Estates! It is not every day that a home of this stature comes on the market. This stunning 1928 Tudor Style Home, extensively renovated from top to bottom, boasts magazine-worthy spaces everywhere you turn. This 6 Bedroom, 4 Full and 2 Half Bath home perfectly blends meticulous renovations, high-end design and stunning original architectural elements. 17 Oaklawn is for the discerning Short Hills buyer seeking an estate-like home just minutes from NYC Midtown Direct Train, exceptional Millburn schools, Short Hills Mall and downtown Millburn's fantastic shopping and restaurants.



Manicured gardens, a lush front lawn, and extensive bluestone abound as you arrive at this magnificent home. Stately gables, original diamond-cut leaded glass windows and a striking Entry Door all contribute to impeccable curb appeal. Enter through the original Tudor-style door into the spacious and elegant Entry Foyer and prepare to be overwhelmed by the stunning craftsmanship, architectural details and sheer luminosity of this home. Plaster walls with charming bas-relief motif, a view of the curved wrought iron staircase and original paneled doors are just a few of the details to catch your eye.





The sunken Living Room will take your breath away with its original wood beamed ceiling, continuation of the plaster walls with bas-relief motif and a magnificent fireplace with sumptuous carved limestone and wood surround. Original leaded windows at three exposures provide outstanding views of the park-like property. The artistry of the original paneled walls and arched built-ins is rarely seen today. Flow easily into the bright and airy SunRoom with a vaulted ceiling, casement windows at three exposures and access to the outstanding backyard (see below). Ready to entertain? You simply cannot find a better venue than the Formal Dining Room. The ethereal wall of leaded glass windows, with intermittent stained glass, is a breathtaking focal point. Whether it's a holiday gathering, formal dinner party or intimate dinner, this room exudes a magical vibe.





The Dining Room flows easily to a massive addition which includes the Chef's Gourmet Kitchen, meticulously and tastefully designed to preserve the integrity of the home. As you enter, you'll find a lovely multi-functional area that serves as both a Butler's Pantry and a Custom Desk Area sure to ground zero for homework or staying organized. A Custom Built In neatly tucks away charging stations, school supplies and files. The Kitchen itself dazzles with custom Wood Mode cabinetry, an oversized 2-tiered island, travertine/butcher block/soapstone countertops and high-end Viking/Dacor/Sub-Zero stainless steel appliances. The adjacent Breakfast Room includes a wall of original double French doors opening up to your own "secret garden" and another set of French doors leading to the Dining Room.



The fabulous addition only gets better as you step into the outstanding Family Room crafted to completely tie in with the original home. The wide plank hardwood floors, plaster walls, leaded windows and beamed ceiling perfectly mimic the home's original details. Cozy nights by the fire are the BEST when you have a dreamy fireplace with a floor to ceiling stone surround. Leaded glass French doors lead out to an ultra-private Patio and garden oasis. Got sports equipment and backpacks? It's no problem when you have a magnificent Mud Room. Beautifully crafted custom cabinetry and bench storage, a convenient Half Bath, a rear staircase and easy access to the 2-Car Garage make the Mud Room divine. Rounding out the First Level is a tasteful Powder Room featuring a custom paneled door, furniture style vanity and marble floor tile.



Equally fantastic as the architectural magnificence of the house is its TO DIE FOR park-like property (3/4 acre) including meticulous landscaping that boasts foundation plantings, blooming perennials, seasonal bulbs and mature trees for privacy. Gorgeous views of the outstanding property can be enjoyed from every room in the house and numerous rooms boast French doors making indoor/outdoor entertaining seamless. Enjoy complete privacy on the Bluestone Patio with stone knee walls/benches, a built in Summer Kitchen with Lynx BBQ and refrigerator and views of the private oasis beyond. Enjoy your coffee and contemplate nature as you relax on the private Patio off of the Family Room. There are numerous open, flat spaces for entertaining, play and plenty of room to add a Pool should you desire.





When it's time to retire for the evening, the stately original curved staircase, with an exquisite wrought iron railing, leads to the magnificent Second Level that truly dazzles. Luxury abounds in the completely Zen Primary Bedroom Suite which functions as its own private wing. Leaded glass windows where sunlight pours in, 2 fully custom closets, a cozy window seat and designer window treatments are the best in form and function. Getting ready is a dream when you have the BEST Dressing Room boasting California Closets throughout and a custom island with custom storage. Tranquility reigns supreme in the picture perfect spa-like Primary Bathroom complete with a stunning custom double vanity with marble, huge shower for 2, rain showerhead and high-end chic tile. Sunny and bright Bedroom 2 includes a Double Door Closet with custom storage and connects to the Primary Suite so it could easily be used as a Sitting Room, Nursery or Office.





When it's time to retire for the evening, the stately original curved staircase, with an exquisite wrought iron railing, leads to the magnificent Second Level that truly dazzles. Luxury abounds in the completely Zen Primary Bedroom Suite which functions as its own private wing. Leaded glass windows where sunlight pours in, 2 fully custom closets, a cozy window seat and designer window treatments are the best in form and function. Getting ready is a dream when you have the BEST Dressing Room boasting California Closets throughout and a custom island with custom storage. Tranquility reigns supreme in the picture perfect spa-like Primary Bathroom complete with a stunning custom double vanity with marble, huge shower for 2, rain showerhead and high-end chic tile. Sunny and bright Bedroom 2 includes a Double Door Closet with custom storage and connects to the Primary Suite so it could easily be used as a Sitting Room, Nursery or Office.





Bedroom 3 features a custom built in and 2 Closets with custom storage. Bedroom 4 feels light and airy as sun radiates through the leaded glass windows. Bedrooms 2 – 4 share the dazzling Full Hall Bath with on trend tile, radiant heat, tub and shower. Down the hallway, you will find a second wing that includes a Second Floor Laundry Room with tons of storage and a built-in ironing board. Bedrooms 5 and 6 are sundrenched and include spacious closets. Bedroom 6 is flexibly being used as an Office and includes a fully plumbed room to build a bath should you choose to create an ensuite bedroom. Bedrooms 5 and 6 share an outstanding Full Hall Bath (renovated 2019) that boasts elongated hexagonal tile, a quartz topped vanity and cool oversized subway tile. And if that wasn't enough, at the top of the rear staircase, don't miss the unfinished Bonus Room that could easily become a potential Office, Art Studio or Yoga Room.

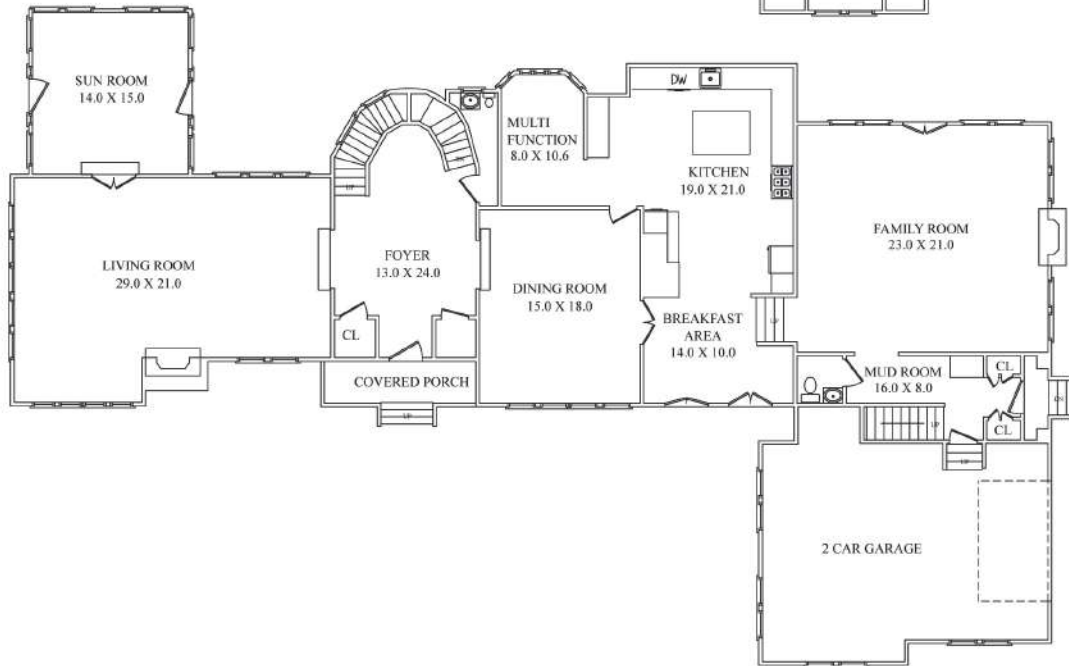


And there's more ... The Lower Level doesn't disappoint with an ENORMOUS Recreation Room perfect for any and all activities. Whether it's X-box, a Super Bowl Party, movie night or just hanging out with friends, there's space for it all. A Game Area is the perfect spot for a pool table, ping pong or air hockey. A Built In Wet Bar with refrigerator means no need to walk upstairs for refreshments. Working out is a pleasure when you have a fabulous Exercise Room. Off of the Exercise Room, don't miss the Full Bath perfect for hopping in the shower after a workout. A spacious Storage Room could easily be converted into your own Wine Cellar. Simply put, the Lower Level adds tons of functionality and space to the home.

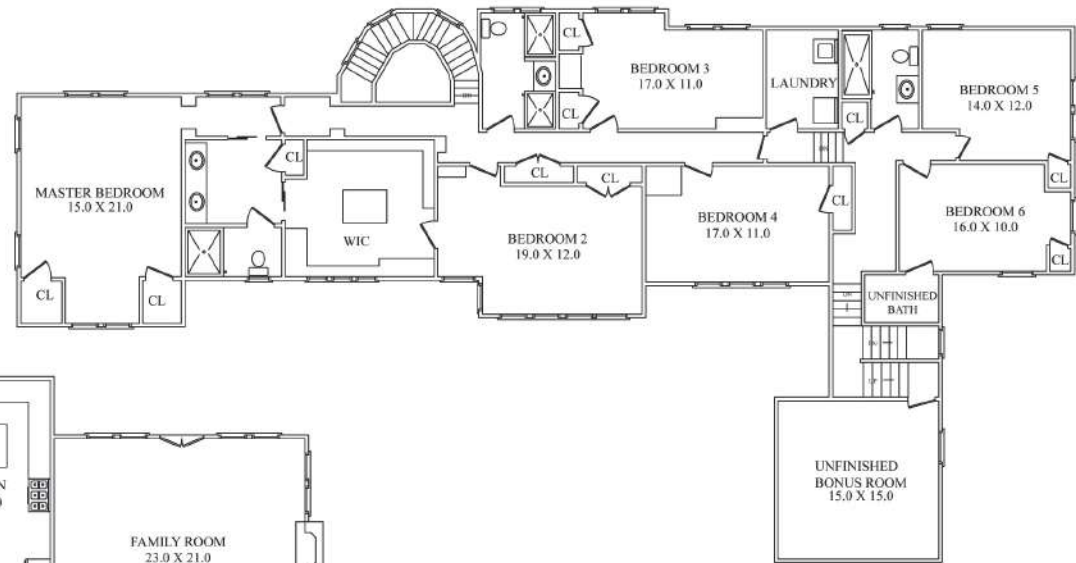
17 Oaklawn Road's architectural integrity, outstanding renovations, prestigious neighborhood and stunning grounds make it a dream home in every way. Don't miss this once in a lifetime opportunity to own an extraordinary estate just minutes from exceptional Millburn schools, NYC transportation and magnificent restaurants and shopping in downtown Millburn.



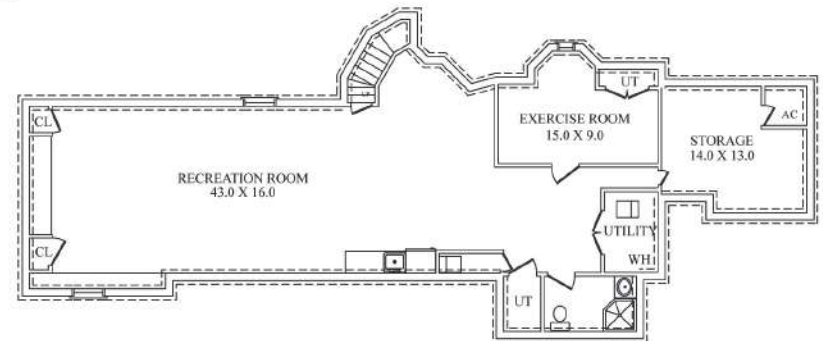
THE FLOORPLAN



FIRST LEVEL



SECOND LEVEL



LOWER LEVEL

NOT TO SCALE - This floor plan is provided for illustration purposes only.
Room positions and dimensions are approximate and should be independently measured for accuracy.

INSIDE & OUT

FIRST LEVEL

- Entry Foyer featuring 8'7" ceiling, original wide Tudor style arched front door, original wide plank hardwood floors, original plaster walls with bas relief motif, recessed lighting, sconce, winding staircase with original wrought iron railing to Second Level, deep Coat Closets with original paneled doors, baseboard molding, crown molding with dentil detail, door to Kitchen Area, open curved staircase to Lower Level
- Sunken Living Room featuring original wide plank hardwood floors, original wood burning limestone carved fireplace with carved oak mantle, original plaster walls with bas relief motif, original arched built ins with open and concealed storage and display lighting, 9'7" high beamed ceiling, original paneled walls, original leaded glass windows, recessed lighting, Bose speakers, Double French Doors to SunRoom
- 4-Season SunRoom featuring 10'4" vaulted ceiling, carpeting, recessed lighting, Built In Bar, floor to ceiling Pella casement windows at three exposures, French doors on each side, Bose speakers
- Powder Room featuring custom panel door, marble floor tile, corner furniture style wood vanity with stone countertop, leaded glass window, recessed lighting, crown molding, baseboard molding
- Dining Room featuring 8'7" ceiling, original wide plank hardwood floors, plaster walls with bas relief motif, original leaded glass windows with intermittent stained glass inserts, chandelier, plaster ceiling, baseboard molding, crown molding with dentil detail, original double French doors to Breakfast Room, archway to Entry Foyer, original paneled swinging door to Kitchen, Bose speakers
- Gourmet Chef's Kitchen featuring limestone tile floors with radiant heat, custom built in Wood Mode cabinetry including glass door cabinetry with leaded glass windows and lighting, custom island with chocolate travertine countertop and butcher block countertop, Pietra Cardosa soapstone countertops on exterior, tumbled tile backsplash, NEW marble backsplash behind cooktop, Shaws farm sink, Sub-Zero refrigerator and freezer drawers, Viking fully integrated refrigerator/freezer, Viking Professional 6 burner cooktop with griddle, Kitchen Aid fully integrated dishwasher, Dacor stainless double wall ovens, Dacor warming drawer, Dacor stainless built in microwave, Sub-Zero wine refrigerator, under cabinet lighting, recessed lighting, pendant lighting over island, custom natural wood hood, open book storage, Bose speakers
- Butler's Pantry/Desk Area featuring limestone tile floors with radiant heat, custom built in desk area with chocolate travertine countertop, custom built in with built in chargers, storage and filing drawer, semi-flush mount light fixture with glass shade, recessed lighting, Custom Built In Dry Bar/Storage featuring custom cabinetry including glass door cabinetry with leaded glass and lighting, wine storage, under cabinet lighting, tumbled tile backsplash, bay of original leaded glass windows
- Breakfast Room featuring limestone tile floors with radiant heat, 2 sets of original leaded glass French doors leading out to private garden, chandelier, plaster walls, natural baseboard moldings, Bose speakers, original double French doors to Dining Room
- Sunken Family Room featuring wide plank hardwood floors, plaster walls, gas fireplace with floor to ceiling stone surround (can be converted to wood burning), custom oak-beamed ceiling, custom built in with open and concealed storage, leaded glass windows with intermittent stained glass inserts that replicate home's original windows, leaded glass French doors to Private Rear Patio, recessed lighting, arched entry to Mud Room Area, open to Breakfast Room, Bose speakers, TV mount above fireplace, radiant heat
- Mud Room featuring slate tile flooring with radiant heat, custom cabinetry and storage including built in coat closets, bench with storage, hook storage, modern flush mount light fixture, door to Garage, custom Tudor style door to side Driveway, custom door to media storage under staircase, Rear Staircase
- Half Bath featuring slate tile flooring, pedestal sink, sconce, flush mount light fixture, baseboard molding
- Heated 2 Car Garage with epoxy flooring, storage area, carriage style doors

SECOND LEVEL

- Curved staircase with original iron railing to Second Level, custom runner, 3 original intermittent leaded glass windows, lantern, original plaster walls with bas relief, hallways with Double Door Linen Closet, designer flush mount light fixtures
- Primary Bedroom Suite featuring carpeting, custom leaded glass windows at 2 exposures, built in window seat with storage, 2 Closets with custom storage, modern flush mount light fixture, recessed lighting, sconces, custom window treatments, Bose speakers, crown molding, baseboard molding
- Primary Bath featuring hexagonal marble floor tile with marble mosaic border and radiant heat, custom wainscoting, custom wall to wall double vanity with marble countertop, 2 medicine cabinets, oversized frameless glass steam and regular shower with marble floor tile, subway tile and seat, 2 showerheads, rain showerhead, separate room for toilet, semi flush mount light fixture, recessed lighting, sconce, Bose speakers, Linen Closet
- Primary Dressing Room featuring carpeting, California Closets custom built in cabinetry and storage, center island with chocolate travertine countertop and custom storage, built in laundry hampers, mirrored doors, organizers and pull out storage, recessed lighting, original leaded glass windows, custom window treatments, pendant globe light fixture, door to Bedroom 2, Bose speakers
- Bedroom 2 featuring carpeting, Double Door Closet with custom storage, original leaded glass windows, recessed lighting, crown molding, baseboard molding, custom shades, door to Primary Dressing Room, nook for vanity/desk area
- Full Hall Bath featuring diamond shaped floor tile with radiant heat, custom wood vanity with marble countertop, medicine cabinet, sconces, recessed lighting, tub with designer tile surround, glass door shower with designer tile surround, rain showerhead, open shelving, original leaded glass windows
- Bedroom 3 featuring carpeting, custom built in with open and concealed storage, 2 Closets with custom storage, recessed lighting, crown molding, baseboard molding, original leaded glass windows, red accent wall
- Bedroom 4 featuring carpeting, Closet, recessed lighting, crown molding, baseboard molding, original leaded glass windows
- Laundry Room featuring tile flooring, built in cabinetry, Electrolux washer and dryer on pedestals, built in pull out ironing board, hanging rods, recessed lighting
- Door to Rear Hallway with steps down to Bedrooms 5 and 6, custom runner, Linen Closet

INSIDE & OUT

SECOND LEVEL CONT'D

- Full Hall Bath (renovated 2019) featuring elongated hexagonal marble floor tile, vanity with quartz countertop, tub/shower combination with oversized subway tile surround, oversized subway tile wainscoting, medicine cabinet, modern scone
- Bedroom 5 featuring hardwood floors, Closet, crown molding, baseboard molding, original leaded glass window, window with divided lites, recessed lighting
- Bedroom 6 (flexibly being used as an Office/potential to be ensuite) featuring hardwood floors, Closet, original leaded glass window, window with divided lites, recessed lighting, door to room that is plumbed for a full bath
- Rear Staircase that splits at top, custom runner, lantern, 2 windows with divided lites
- Unfinished Bonus Room with vaulted ceiling, potential for Office, Art Studio Yoga Room
- Rear Staircase Landing Area featuring hardwood floors, plaster walls, recessed lighting, baseboard molding

LOWER LEVEL

- Curved carpeted staircase with original iron railings to Lower Level, Tudor style door to backyard
- Recreation Room featuring tile flooring, custom built in seat, open bookshelves, paneled walls, 2 storage closets for toys and games, recessed lighting, pre-wired media area for TV/gaming stations
- Game Area featuring tile flooring, recessed lighting, custom built in Wet Bar with sink, soapstone countertops and backsplash, refrigerator
- Full Bath featuring marble floor tile, built in vanity with quartz countertop, frameless glass door shower with subway and mosaic tile surround, recessed lighting, scone
- Exercise Room featuring French door at entry, rubber flooring, custom cut mirrors, TV, recessed lighting
- Large Storage Room (potential Wine Cellar) featuring tile flooring, recessed lighting
- Utility and Storage Closets
- Sump pump

FRONT YARD & BACKYARD

- Over ¾ Acre of level property flawlessly landscaped with foundation plantings, blooming perennials, seasonal bulbs and mature trees for privacy
- Bluestone front walkway leading to grand bluestone entry
- Bluestone stepping paths
- Private Paver Patio off Family Room
- Large Rear Bluestone Patio with stone knee walls/bench seating, buffet area
- Built In stone Summer Kitchen with Lynx BBQ and refrigerator
- Vintage style post lanterns
- Huge flat, fenced in grassy area
- Different areas with options for putting in a pool
- Paver driveway with decorative design, plenty of parking, basketball hoop
- Irrigation system
- Professional outdoor lighting
- Outdoor Bose speakers

ADDITIONAL FEATURES

- Extensively renovated in 2006 with continuous updates through today
- Design by renowned architect David Rosen A.I.A. of Rosen Kelly Conway (Summit)
- Home featured in Millburn – Short Hills magazine (Fall 2008)
- Complete home security system with external cameras, Wi-Fi boosters and digital remote access, Ring doorbell
- Automated outdoor lighting
- Pull down staircase to attic spanning entire length of home, Walk In Cedar Closet
- Reasonable taxes compared to comparable homes in the area
- Original slate roof meticulously maintained
- Newer water heater (2017)
- Bose speakers throughout First Level, Outdoors and Primary Suite

