

21 Greensview Drive

Scotch Plains, New Jersey



Welcome to 21 Greensview Drive in Scotch Plains' sought after South Side! This Move-In Ready 4 Bedroom, 3.5 Bath center hall colonial sits majestically on just under an acre with outstanding Ash Brook Golf Course views! This is the kind of home where all you need to do is drop your bags and unpack. Enjoy all this home has to offer with top notch schools and proximity to New York City, Oak Ridge Park and fabulous downtown shopping/restaurants in Scotch Plains, Westfield and Cranford.

As you arrive, prepare to be impressed by the expansive flat property, curb appeal, and quiet cul de sac. This is one of Scotch Plains' best blocks with prestigious homes on spacious, oversized lots. As you arrive, note the stately covered front entry and welcoming front door. The bright and sunny Entry Foyer features 2 Coat Closets and a view of the gracious staircase leading to the second floor. Soothing gray hues, abundant windows and wide plank hardwood floors are just a few of the First Level's remarkable features. Flow easily into the Living Room which features an oversized bay window where the sunlight pours in. Dinner parties are divine in the elegant formal Dining Room (also doubles as a Game Room) complete with another bay window and chic pendant light fixtures. The stunning Gourmet Chef's Kitchen is sure to satisfy every chef's desire. Sleek modern white cabinetry, quartz countertops with a Breakfast Bar, and top-of-the-line Thermador stainless steel appliances are the best in form and function.





The adjacent sunny Breakfast Room boasts oversized sliding doors with enormous sidelites that bring in the outdoors. The sliding doors lead to a spacious outdoor Deck great for al fresco dining, spending time with friends, and outdoor entertaining. Beyond the Kitchen, you are sure to be captivated by the magnificent Family Room. This room, bathed in sunlight that pours through a large picture window, exudes relaxation and is well suited for game night, movie watching or drinks with friends. A floor to ceiling stone accent wall beautifully envelopes a cozy wood burning fireplace. Working from home is an absolute dream when your Home Office overlooks idyllic park-like property. A tasteful Half Bath, a convenient First Level Laundry Room and a 2 Car Garage round out the First Level.



Of course, the real star of 21 Greensview is the out-of-this-world, tranquil flat property. There is plenty of room for a pool with abundant room left over for play and entertaining spaces. You simply don't see property like this every day!

Ready to retire for the evening? Wander up the elegant staircase to find the large second floor landing complete with a Linen Closet with floor to ceiling shelving. Prepare to relax in the private and spacious Primary Bedroom Suite with a sleek tray ceiling, soothing hues and the BEST Walk In Closet. It only gets better in the Primary Bathroom with a floating double vanity with marble vessel sinks, marble tile, a soaking tub and a frameless glass door shower. All other bedrooms are spacious, sunny and include tremendous closet space. Getting ready is a pleasure in the large Hall Bathroom featuring a large vanity and shower with a rain showerhead.





And there's more! The Lower Level boasts a fully finished Recreation Room, with a Game Room Area, perfect for endless hours of entertainment. A Bonus Room, with a large Double Door Closet, is perfect for an Au Pair or visiting guests. A well-appointed Full Bath and plenty of storage round out the Lower Level.

With its proximity to New York City, sought-after school district and convenience to fantastic shopping/restaurants in Scotch Plains, Westfield and Cranford, you will undoubtedly want to call 21 Greensview home!

INSIDE & OUT

FIRST LEVEL

- Entry Foyer featuring wood door with sidelites, wide plank hardwood floors, 2 Coat Closets, recessed lighting, staircase to Second Level with custom runner, baseboard molding, door to Lower Level
- Living Room featuring bay window, wood blinds, wide planked hardwood floors, crown molding, baseboard molding, recessed lighting, opens to Family Room
- Dining Room (flexibly being used as a Dining and Game Room) featuring bay window, wood blinds, wide planked hardwood floors, crown molding, baseboard molding, 3 pendant lights
- Family Room featuring wide plank hardwood floors, stone accent wall with wood burning fireplace, picture window with custom shade, crown molding, baseboard molding, recessed lighting, floating shelves, decorative octagonal windows on stone wall, Bose speakers
- Gourmet Chef's Kitchen featuring wide plank hardwood floors, sleek modern white custom cabinetry including frosted glass doors, quartz countertops, mosaic backsplash, Breakfast Bar, Thermador stainless oven/range with 4 burners and griddle/grill, Thermador stainless hood, Thermador extra-large stainless 48" refrigerator/freezer, Thermador built in stainless microwave, Thermador stainless dishwasher, recessed lighting, TV
- Breakfast Area featuring wide plank hardwood floors, sliding glass doors with full-sized sidelites, baseboard molding, recessed lighting
- Rear Hallway featuring wide plank hardwood floors, door to Garage
- 2 Car Garage with storage
- Powder Room featuring mosaic floor tile, vanity with vessel sink, wallpaper, baseboard molding, crown molding, recessed lighting
- Laundry Room featuring tile flooring, utility sink, wire shelving, LG top loader washer, LG front loader dryer, flush mount light fixture, door to back deck
- Home Office featuring hardwood floors, double windows with blinds, baseboard molding, track lighting

SECOND LEVEL

- Second Level Landing featuring hardwood floors, recessed lighting, Linen Closet, baseboard molding, drop down attic
- Primary Bedroom Suite featuring hardwood floors, oversized double windows with blinds and custom window treatments, recessed lighting, tray ceiling, baseboard molding, wallpaper accent wall, Walk In Closet with custom storage
- Primary Bathroom featuring marble floor tile, radiant heat, floating double sink with marble countertop and 2 marble vessel sinks, 2 medicine cabinets, sconces, recessed lighting, built in soaking tub, frameless glass door shower with rain showerhead and marble tile surround, picture window overlooking golf course, designer wallpaper
- Bedroom 2 featuring hardwood floors, oversized double windows with wood blinds, oversized Double Door Closet, baseboard molding, recessed lighting
- Bedroom 3 featuring hardwood floors, oversized double windows with wood blinds, 2 Double Door Closets, baseboard molding, pendant light fixture
- Bedroom 4 featuring hardwood floors, oversized double windows with wood blinds, oversized Double Door Closet, baseboard molding, ceiling fan/light fixture
- Full Hall Bath featuring vanity with granite countertop, medicine cabinet, tumbled tile flooring and wainscoting, mosaic accent wall tile, shower with tile surround, rain showerhead and seat, recessed lighting, window with wood blinds

LOWER LEVEL

- Carpeted staircase to Lower Level
- Utility Room
- Recreation Room featuring carpeting, recessed lighting, partially paneled walls, recessed decorative shelf, wall shelf, baseboard molding, Storage/Utility Closet, Closet
- Game Area
- Full Bath featuring tile flooring, vanity, shower, recessed lighting
- Bonus Room/Potential Au Pair Room featuring carpeting, Double Door Closet, partially paneled, recessed lighting

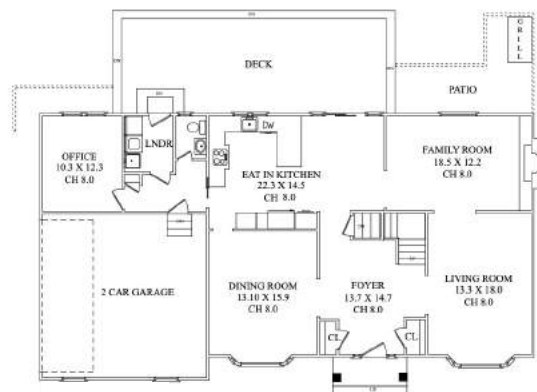
FRONT & BACKYARD

- Just under 1 acre, expansive flat property with manicured landscaping
- Paver front walkway
- Covered front entry
- Wood Deck, painted summer 2021
- Bluestone and brick Patio Area with Gas BBQ line

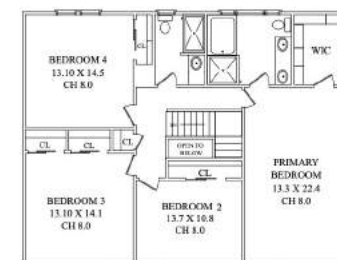
ADDITIONAL FEATURES & UPGRADES

- Alarm system
- Newer hot water heater (2019)
- Heat/AC, 2 zones (furnace and 1 AC new 2021)
- Painted soothing gray hues throughout

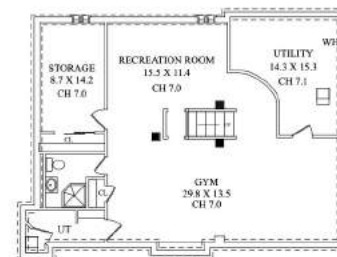
THE FLOORPLAN



FIRST LEVEL



SECOND LEVEL



LOWER LEVEL

NOT TO SCALE - This floor plan is provided for illustration purposes only.
Room positions and dimensions are approximate and should be independently measured for accuracy



sueadler 
THE #1 KELLER WILLIAMS TEAM IN NEW JERSEY team

CELL: 973.936.9129
OFFICE: 973.376.0033 x101
EMAIL: info@sueadler.com
sueadler.com/21Greensview

kw PREMIERE
PROPERTIES
KELLERWILLIAMS