

kw PREMIERE
PROPERTIES
KELLERWILLIAMS.

Each Keller Williams office is individually owned and operated.

sueadler 
THE #1 KELLER WILLIAMS TEAM IN NEW JERSEY team

98 Minnisink Road

Short Hills, NJ



Welcome to 98 Minnisink Road! Located in the heart of Old Short Hills, this gorgeous 5 Bedroom, 5.1. Bath contemporary custom stunner will surely have you transfixed. On one of Short Hills' best streets, the property is flat, private, and fenced-in. This home stands the test of time with extraordinary design and great flow for everyday living.

Drive up to 98 Minnisink to view the stunning brick exterior and lovely property, a vision of perfect proportion and detail. The captivating front entrance boasts a graceful front walkway, bluestone steps, foundation plantings and a full-length covered front porch area. As you enter, prepare to be overwhelmed by the sheer elegance, light and scale of this home. The oversized Entry Foyer is a work of art, in and of itself, with its stately curved staircase, oversized windows and high ceilings.







Step down into the sunken Living Room radiating with natural light. Large enough for two distinct entertainment spaces, the room boasts cool parquet floors, an original stone fireplace and enormous windows at two exposures. A tray ceiling with custom lighting contributes to the ethereal feel of this room. Double doors lead directly to the formal Dining Room with an abundance of space to host gatherings and gourmet dinners. This room flows directly out, via double French doors, to the vast Patio where you can enjoy al fresco dining with breathtaking property views.



The Dining Room connects easily to the dazzling Gourmet Chef's Kitchen where custom wood cabinetry, a custom island, Caesarstone countertops and high-end Dacor/Viking/Café/Miele stainless appliances are the best in form and function. A Walk In Pantry, Breakfast Bar and a custom Desk Area round out this fabulous space. Enjoy dining together in the adjacent Breakfast Room with a Built In Coffee Bar and French doors leading out to a cozy Screened In Porch.







The Porch, whether being used while you sip your morning coffee, for meditation or for evening cocktails, feels private and magical. Down the hall, the incredible Family Room, with its statement Wall to Wall Built In and Hidden Bar, is welcoming and luxurious. The Family Room opens up to the Screened In Porch making indoor/outdoor entertaining seamless. A convenient Laundry Room and chic Powder Room round out the First Level Living Area.





Ready to retire for the evening? It doesn't get better than the first level opulent Primary Bedroom Suite. Tons of sunlight beaming in through oversized windows, 2 Walk In Closets and a Primary Bedroom Office (easily could be used as a Nursery) make the Primary Suite your own sumptuous oasis. The Primary Bathroom is well-appointed with a large double vanity, built-in jetted tub, separate vanity/makeup area and a skylight. Bedroom 2 is also located on the First Level and includes a roomy Double Door Closet and oversized windows at 2 exposures. A Full Hall Bath rounds out the First Level sleeping area.



Move up the graceful, curved staircase where you are sure to be impressed by the second-level landing, perfect as a Teen Lounge and Homework Area. Whether it's doing school projects or hanging out with friends, this space ensures your house will be the home base.





On this level, you will find 3 large bedrooms, each with tons of closet space and natural light. Bedrooms 4 through 5 share a tasteful Full Hall Bath and Bedroom 3 is ensuite with its own bath for privacy.





One of the biggest draws of 98 Minnisink is the outdoor space easily accessed from the Dining Room, Kitchen or Family Room. The dreamy Screened In Porch and extensive Patio, complete with plenty of room for al fresco dining, lounging and a firepit, are the perfect spots for outdoor entertaining. Quite a remarkable and private piece of property.



And there's more... The spacious Lower Level adds tons of functional space to the home. A Recreation Room with a Built In Bar, is the perfect spot for movie watching, game playing and craft projects. The adjacent Game Room boasts plenty of room for foosball and ping pong. An entirely separate wing includes 2 Bonus Rooms ideal for visiting guests, an au pair or extra home office space. A spacious Exercise Room, tasteful Full Bath and an oversized 2 Car Garage only amplify the Lower Level's appeal. Ample storage space and a Walk In Cedar Closet round out the Lower Level.

98 Minnisink is a dream home in every way. Just minutes from Hartshorn School, NYC transportation, the Short Hills Club, the Racquets Club, The Short Hills Mall and downtown Millburn, this home will not last.

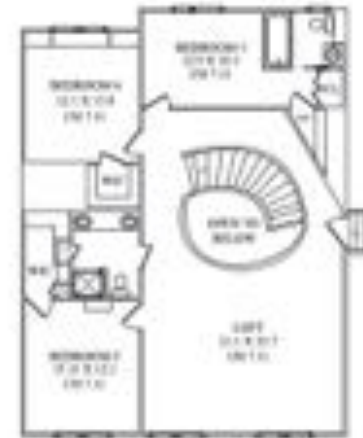




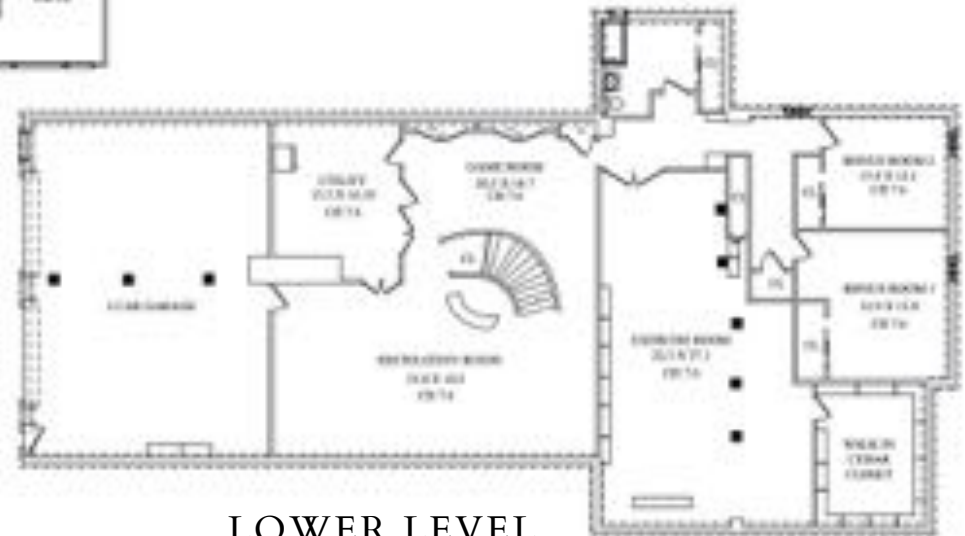
THE FLOORPLAN



FIRST LEVEL



SECOND LEVEL



LOWER LEVEL

NOT TO SCALE - This floor plan is provided for illustration purposes only.
Room positions and dimensions are approximate and should be independently measured for accuracy.

INSIDE & OUT

FIRST LEVEL

- Entry Foyer featuring original wood door, floor to ceiling windows, ceramic floor tile laid on diagonal, 9' ceilings with deep cove crown moldings, Double Door Coat Closet, accent wall with raised moldings, recessed lighting, pendant light fixture with oversized drum shade, curved staircase to Second Level, curved staircase to Lower Level
- Sunken Living Room featuring 2 distinct conversation areas, parquet wood floors, original wood-burning fireplace with stone surround and hearth, tray ceiling with custom lighting, recessed lighting, track lighting, floor to ceiling windows at 2 exposures, baseboard molding, accent wall by Dining Room with raised moldings, double doors to Dining Room
- Dining Room featuring parquet wood floors, Double French doors to Patio with full-length sidelites, iron chandelier, accent wall by LivingRoom with raised moldings, double doors to Living Room, baseboard molding, pocket door to Kitchen
- Gourmet Chef's Kitchen featuring ceramic tile flooring laid on a diagonal, floor to ceiling custom cabinetry including glass door cabinetry, island featuring Caesarstone countertop, storage, bar sink and seating for 2, Caesarstone exterior countertops, mosaic and subway tile backsplash, Bar Area with Kitchen Aid beverage refrigerator, recessed lighting, pendant lighting over island, under cabinet lighting, Built in GE Monogram stainless microwave, Café stainless refrigerator/freezer, Dacor stainless 6 burner double oven/range, Viking stainless hood, Miele stainless dishwasher, Walk In Pantry, stainless sink with gooseneck fixture, Custom Desk Area, French door to backyard, Breakfast Bar with seating for 3 integrated with Breakfast Room, open shelving, brick accent area
- Breakfast Room featuring ceramic tile flooring laid on a diagonal, double French doors to Screened In Porch, full window/sidelites, Custom Built in Coffee Bar with Bar Sink and storage, recessed lighting, pendant lighting over table, baseboard molding
- Screened In Porch featuring bluestone flooring, screens at 2 exposures, accessible to Kitchen and Family Room, 2 ceiling fan/light fixtures, door to Bluestone Patio, brick accent walls at 2 exposures
- Powder Room featuring pocket door at entry, hardwood floors, custom vanity area with vessel sink, pendant light fixture with drum shade, display shelf
- Laundry Room featuring pocket door at entry, ceramic tile flooring laid on a diagonal, custom built in cabinetry, stainless utility sink, Whirlpool refrigerator, Bosch front loader washer and dryer, recessed lighting, baseboard molding
- Family Room featuring designer carpeting, paneled walls, wall to wall Custom Built In with open and concealed storage and Hidden Bar, tray ceiling, recessed lighting, Double French Doors to Screened In Porch, floor to ceiling windows at 2 exposures, wood blinds
- Entry Foyer featuring original wood door, floor to ceiling windows, ceramic floor tile laid on diagonal, 9' ceilings with deep cove crown moldings, Double Door Coat Closet, accent wall with raised moldings, recessed lighting, pendant light fixture with oversized drum shade, curved staircase to Second Level, curved staircase to Lower Level
- Sunken Living Room featuring 2 distinct conversation areas, parquet wood floors, original wood-burning fireplace with stone surround and hearth, tray ceiling with custom lighting, recessed lighting, track lighting, floor to ceiling windows at 2 exposures, baseboard molding, accent wall by Dining Room with raised moldings, double doors to Dining Room
- Dining Room featuring parquet wood floors, Double French doors to Patio with full-length sidelites, iron chandelier, accent wall by LivingRoom with raised moldings, double doors to Living Room, baseboard molding, pocket door to Kitchen
- Gourmet Chef's Kitchen featuring ceramic tile flooring laid on a diagonal, floor to ceiling custom cabinetry including glass door cabinetry, island featuring Caesarstone countertop, storage, bar sink and seating for 2, Caesarstone exterior countertops, mosaic and subway tile backsplash, Bar Area with Kitchen Aid beverage refrigerator, recessed lighting, pendant lighting over island, under cabinet lighting, Built in GE Monogram stainless microwave, Café stainless refrigerator/freezer, Dacor stainless 6 burner double oven/range, Viking stainless hood, Miele stainless dishwasher, Walk In Pantry, stainless sink with gooseneck fixture, Custom Desk Area, French door to backyard, Breakfast Bar with seating for 3 integrated with Breakfast Room, open shelving, brick accent area
- Breakfast Room featuring ceramic tile flooring laid on a diagonal, double French doors to Screened In Porch, full window/sidelites, Custom Built in Coffee Bar with Bar Sink and storage, recessed lighting, pendant lighting over table, baseboard molding
- Screened In Porch featuring bluestone flooring, screens at 2 exposures, accessible to Kitchen and Family Room, 2 ceiling fan/light fixtures, door to Bluestone Patio, brick accent walls at 2 exposures
- Powder Room featuring pocket door at entry, hardwood floors, custom vanity area with vessel sink, pendant light fixture with drum shade, display shelf
- Laundry Room featuring pocket door at entry, ceramic tile flooring laid on a diagonal, custom built in cabinetry, stainless utility sink, Whirlpool refrigerator, Bosch front loader washer and dryer, recessed lighting, baseboard molding
- Family Room featuring designer carpeting, paneled walls, wall to wall Custom Built In with open and concealed storage and Hidden Bar, tray ceiling, recessed lighting, Double French Doors to Screened In Porch, floor to ceiling windows at 2 exposures, wood blinds

INSIDE & OUT CONT...

FIRST LEVEL SLEEPING AREA

- Hallway featuring hardwood floors, recessed lighting, Double Door Linen Closet
- Primary Bedroom Suite featuring carpeting, floor to ceiling windows, recessed lighting, baseboard molding
- Primary Bathroom featuring tile flooring, custom wall to wall double vanity, laminate countertops, recessed lighting, custom dressing/makeup area, wall of mirrors, separate room with sunken jetted tub, shower, marble floor and wall tile, skylight, 2 pendant lights, mirrored accent wall, 2 fully custom Walk In Closets
- Primary Office featuring parquet wood floors, wall-to-wall Built In and Desk Area featuring open and concealed storage, recessed lighting, baseboard molding, oversized windows
- Full Hall Bath featuring tile flooring, custom wall to wall vanity, laminate countertop, tile wainscoting, tub/shower combination, 2 Linen Closets with built in storage
- Bedroom 2 featuring carpeting, Double Door Closet, oversized windows at 2 exposures, recessed lighting, baseboard molding

SECOND LEVEL

- Curved staircase with iron railings to Second Level, decorative ceiling medallion
- Second Level Landing/Teen Lounge/Homework Area featuring carpeting, oversized windows, recessed lighting, track lighting, baseboard molding, door to Attic Storage, door to Full Bath
- Full Bath featuring tile flooring, double wood vanity with marble countertop, glass door shower, Linen Closet, 2 medicine cabinets, recessed lighting, two 2-light sconces
- Ensuite Bedroom 3 featuring carpeting, Walk In Closet, Linen Closet, 2 windows, baseboard molding, Bath featuring hexagonal floor tile, modern vanity with integrated sink, glass shelf, tub/shower combination with subway tile surround, recessed lighting
- Bedroom 4 featuring carpeting, wall to wall laminate built in with desk area, recessed lighting, 2 windows, oversized Closet, baseboard molding
- Bedroom 5 featuring carpeting, oversized windows, recessed lighting, Walk In Closet, baseboard molding

LOWER LEVEL

- Curved carpeted staircase to Lower Level, storage area under staircase
- Recreation Room featuring carpeting, recessed lighting, baseboard molding, Built In Custom Bar, pendant lighting over bar, brick accent area
- Game Room featuring carpeting, recessed lighting, baseboard molding, Storage Closets, Utility Room
- 2 Car Garage with storage, extra deep
- Exercise Room featuring double doors at entry, storage, flush mount lighting
- Walk In Cedar Storage Closet
- Rear Hallway featuring wood look floors, paneled walls, flush mount light fixtures
- Full Hall Bath featuring wood-look flooring, wood vanity with integrated sink, recessed lighting, shower with tile surround, Double Door Storage Closet
- Bonus Room 1 featuring wood-look flooring, Double Door Closet, flush mount lighting, paneled walls, baseboard molding
- Bonus Room 2 featuring wood-look flooring, Double Door Closet, flush mount lighting, paneled walls, baseboard molding

FRONT YARD & BACKYARD

- Paver patterned u-shaped driveway, side driveway with brick retaining wall, basketball hoop
- Professionally landscaped throughout with foundation plantings, perennials and mature specimen trees
- Graceful paver front walkway, bluestone front staircase
- Covered front porch, bluestone flooring
- Fenced in backyard
- Oversized Bluestone Patio, stone retaining walls
- Irrigation system

ADDITIONAL FEATURES

- Sump pumps and French drains
- Heat/AC updated throughout last 16 years
- Alarm System



sueadler 
THE #1 KELLER WILLIAMS TEAM IN NEW JERSEY team

CELL: 973.936.9129
OFFICE: 973.376.0033 x101
EMAIL: info@sueadler.com
sueadler.com/98Minnisink

kw PREMIERE
PROPERTIES
KELLERWILLIAMS.