

kW PREMIERE
PROPERTIES
KELLERWILLIAMS

Each Keller Williams office is individually owned and operated.

sueadler 
THE #1 KELLER WILLIAMS TEAM IN NEW JERSEY **team**

29 Whitney Farm Place

MORRISTOWN, NJ



Welcome to 29 Whitney Farm Place at James Place in Morristown! This 3 Bedroom, 2.5 Bath ultra-private luxury stunner is townhome living at its finest with high-end finishes, high design and mind-blowing natural views. Minutes to historic Morristown shopping and restaurants, Route 287, Jockey Hollow, Morristown Green and Midtown Direct Train, this home has it all.

Enter the stately front doorway into the Entry Foyer complete with gleaming hardwood floors (that carry through the entire First Level), a dazzling tray ceiling and a large Coat Closet with custom storage. A lovely Powder Room, with a chic accent wallpapered ceiling, is conveniently located off of the Entry Foyer. Flow into the outstanding Gourmet Chef's Kitchen that will satisfy any cook's desire. Crisp white custom cabinetry with gorgeous granite countertops, an island with seating for 3, a Walk In Pantry and high-end stainless steel appliances make the Kitchen extraordinary. From the Dining Room, you can access the private Deck overlooking your own breathtaking natural oasis. This unit is unique in the development due to its amazingly private and picturesque backyard space. Back inside, entertainment and holiday celebrations are a dream in the open and airy Great Room with plenty of room for movie watching and game night.





Ready to retire for the evening? Follow the open and airy staircase up to the spacious Second Level and prepare to be amazed. The gorgeous Primary Bedroom Suite boasts oversized windows where light pours in. Two Walk In Closets with custom shelving and hanging storage are the ultimate in luxury. There is also a second Double Door Closet just in case you need it. The spa-like Primary Bathroom is designed to perfection with two luxurious vanities, quartz countertops, a glass door shower and a separate toilet room. Two other bedrooms include oversized windows with wide open views and roomy closets. The Full Hall bath aims to please with a lovely custom granite countertop vanity, Linen Closet, and on-trend tile. A convenient Second Floor Laundry Room rounds out this level.

This incredible home, perfectly located with extraordinary privacy and spectacular nature views, make this townhome in a class of its own.



INSIDE & OUT

FIRST LEVEL

- Entry Foyer featuring hardwood floors, tray ceiling, pendant light fixture, wood door with sidelites, deep crown and baseboard moldings
- Hallway off Foyer with door to Garage, oversized Double Door Closet
- 2 car garage, carriage style door
- Powder Room featuring hardwood floors, vanity with stone countertop, chic wallpapered accent ceiling, 2 light sconce
- Gourmet Chef's Kitchen featuring hardwood floors, custom cabinetry including glass door cabinetry, granite countertops, island with seating for 3, subway tile, matte black hardware, Kitchen Aid stainless refrigerator/freezer, Bosch stainless dishwasher, Sharp microwave drawer, Kitchen Aid gas oven/range, stainless hood, recessed lighting, industrial style pendant lighting over island, deep crown molding, Walk In Pantry
- Dining Room featuring hardwood floors, sliding French doors to Deck, chandelier, deep crown and baseboard moldings
- Family Room featuring hardwood floors, 3 oversized windows, recessed lighting, deep crown and baseboard moldings

SECOND LEVEL

- Second Level Landing featuring carpeting, Linen Closet, flush mount light fixture
- Primary Bedroom Suite featuring carpeting, ceiling fan/light fixture, recessed lighting, deep crown and baseboard moldings, Double Door Closet, 2 Walk In Closets, Bathroom featuring marble look floor tile, recently redone (2020) oversized shower with designer tile, floating seat, Linen Closet, 2 vanities with quartz countertops, custom mirrors, two 3-light sconces, flush mount light fixture, window, separate room for toilet
- Laundry Room featuring tile flooring, cabinetry with quartz countertop, open shelf, Whirlpool front loader washer and dryer on stands, flush mount light fixture
- Full Hall Bath featuring tile flooring, wall to wall custom vanity with quartz countertop, custom cut mirror, 3 light sconce, Linen Closet, separate room with toilet and bath/shower combination with tile surround, light/fan combination, door to Bedroom 2
- Bedroom 2 featuring carpeting, 2 oversized windows, Closet, door to bathroom, baseboard molding, flush mount light fixture, door to Storage Room, pretty view of the development/gazebo
- Bonus Storage Room
- Bedroom 3 carpeting, 2 oversized windows, Double Door Closet, baseboard molding, flush mount light fixture

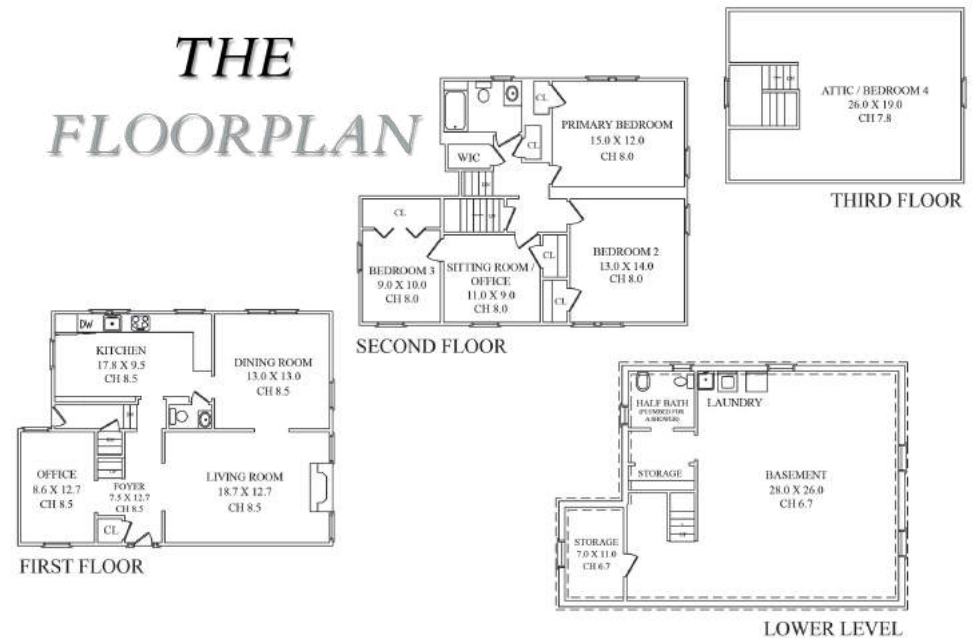
FRONT YARD/BACKYARD

- Paver front walkway
- Rear Deck
- Area for play
- Overlooks pretty wooded area

ADDITIONAL FEATURES & UPGRADES

- Berkshire Model
- Freshly painted soothing hues throughout
- 9' ceilings throughout
- Located close to development's Gazebo where food trucks come/community events take place
- Outdoor gym in development

THE FLOORPLAN



CELL: 973.936.9129

OFFICE: 973.376.0033 x101

EMAIL: info@sueadler.com

sueadler.com/29WhitneyFarm