

12 Chestnut Place

Short Hills, New Jersey





Welcome home to 12 Chestnut Place! Bring your ideas and your contractor for this PRIME OPPORTUNITY in the heart of Old Short Hills (Glenwood School)! Located in one of Short Hills' most prestigious neighborhoods, a short distance to Short Hills Train Station, Cora Hartshorn Arboretum and downtown Short Hills and Millburn restaurants and shopping.

All of the good bones and vintage hallmarks of a classic Short Hills colonial are here and ready to be customized to your exact taste.





Serene and deep stunning piece of property (.6 Acre) encased by nature. Elegant and spacious rooms with good flow and incredible natural views from every room. Spacious Living Room with fireplace and picture window. Cool Den/Office with vintage built ins. Formal Dining Room. Spectacular Kitchen addition with soaring ceilings, tons of custom cabinetry and huge island opening to Breakfast and Family Room Areas. Magical Sun Room. Pretty side entrance with Walk In Pantry (could be great Mud Room).





Second Level with Primary Suite and 3 other bright and cheery bedrooms. 3 Full Baths. Lower Level with Main Area, Laundry and Work Room and could easily accommodate a Recreation Room, Exercise Room and Wine Cellar. Oversized 3 Car Garage (could potentially fit tandem 4) and large driveway with turnaround. Potential Dark Room or Potting Area. So much storage! The possibilities for this home are endless. With such huge potential, this home will NOT last! ("AS IS")

INSIDE & OUT

FIRST LEVEL

- Entry Foyer featuring original front door and sidelites, hardwood floors, wallpaper, crown molding with dentil detail, baseboard molding, crystal chandelier, staircase to Second Level, 2 deep Coat Closets
- Dining Room featuring oversized picture window, hardwood floors, crown molding with dentil detail, baseboard molding, crystal chandelier, swinging door to Kitchen Entrance Area
- Living Room featuring oversized picture window, carpeting (hardwood floors underneath), original fireplace with marble surround and hearth and custom millwork mantle, crown molding with dentil detail, baseboard molding, large opening to SunRoom
- Library/Den/Office featuring original double doors at entry, windows at 3 exposures, carpeting (hardwood floors underneath), extensive Custom Built Ins throughout with open and concealed storage, concealed Bar Area, floor to ceiling windows at rear, door to staircase to backyard, recessed lighting
- Sun Room featuring hardwood floors, floor to ceiling windows at 2 exposures, ceiling fan, recessed lighting, baseboard molding, crown molding, door to staircase to backyard
- Side Entrance Area featuring door to Covered Side Entry, terra cotta floor tile, baseboard molding, recessed lighting, door to Walk In Pantry
- Walk In Pantry with window at 1 exposure, built-in shelving
- Kitchen featuring hardwood floors, windows at 2 exposures, custom cabinetry, solid surface and butcher block countertops, custom oversized island with seating for 2, vaulted ceiling with skylights, 2 sinks, bay window over exterior sink, vintage Wolf 6 burner stove, stainless hood, vintage GE wall oven, microwave nook, 1 refrigerator and 1 full-length freezer, dishwasher, recessed and track lighting
- Breakfast Room/Family Room Area featuring hardwood floors: Breakfast Room Area with vaulted ceiling, bay of casement windows with arched window above, Wall to Wall Built-in with open and concealed storage, flows to SunRoom; Family Room Area with Built-in Desk Area with open and concealed storage, Broom Closet and Double Door Closet with built-in shelving
- First Floor Bathroom featuring vintage floor and wainscoting tile, wall mount sink, wallpaper, shower, sconce, built-in cabinet

SECOND LEVEL

- Carpeted staircase to Second Level
- Second Level Landing featuring carpeting (hardwoods underneath), wallpaper, flush mount light, crown molding, baseboard molding, Linen Closet, Double Hung Hall Closet
- Primary Bedroom Suite featuring hardwood floors, windows at 2 exposures, 2 Closets, crown molding, baseboard molding, Bathroom featuring vintage floor and wainscoting tile, wallpaper, wall mount/washbasin sink, shower, Walk In Linen Closet, large window, medicine cabinet with built in lighting
- Bedroom 2 featuring carpeting (hardwoods underneath), windows at 2 exposures, wallpaper, crown molding, baseboard molding, open shelving, Closet
- Full Hall Bath featuring vintage floor and wainscoting tile, wallpaper, wall mount/washbasin sink, tub/shower combination, built in storage, medicine cabinet, 2 light sconce, large window
- Bedroom 3 featuring carpeting (hardwoods underneath), windows at 2 exposures, custom Wall to Wall Built In/Desk Area, crown molding, baseboard molding, track lighting, open shelving, Closet with access to Attic
- Bedroom 4 featuring carpeting (hardwoods underneath), windows at 2 exposures, custom Wall to Wall Built In/Desk Area, 2 Closets, Built in Wardrobe with hanging storage, cabinets and drawers, crown molding, baseboard molding, open shelving

LOWER LEVEL

- Wood staircase to Lower Level
- Main Area featuring laminate tile flooring, built in bookshelf, utility access
- Laundry/Utility Room featuring concrete flooring, Kenmore washer and dryer, utility sink, Frigidaire refrigerator/freezer, furnace/AC, hot water heater (recently replaced)
- Work Room featuring L-Shaped Work Area built in cabinetry/peg storage, built in floor to ceiling open shelving
- Oversized 3 Car Garage with tons of storage space, door to Storage Area, door to 2nd furnace room
- Storage Area with potential for a Wine Cellar, Dark Room or Potting Area

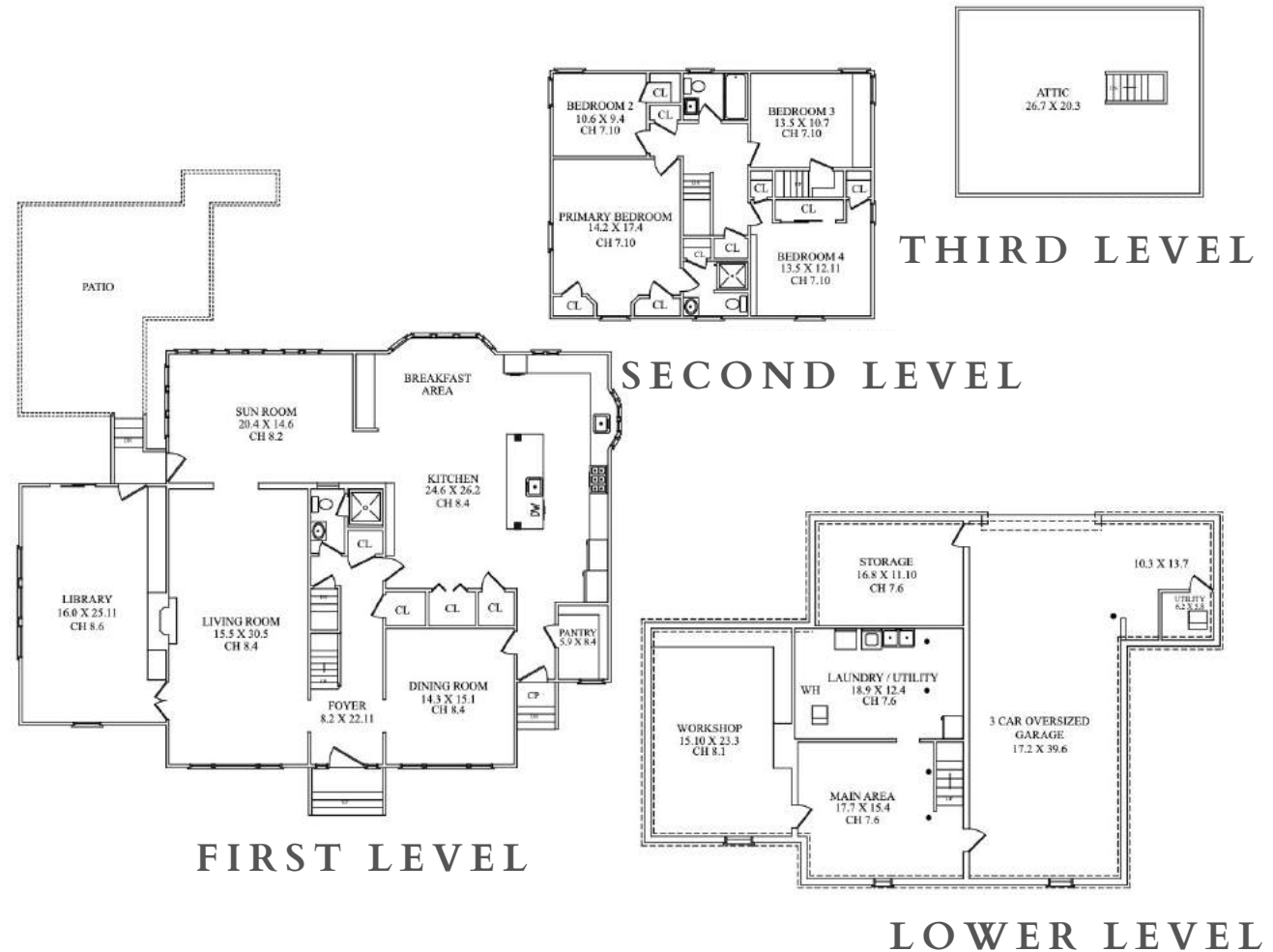
BACKYARD

- Incredibly deep backyard (.6 acre); absolute serenity, totally encased in nature
- Large brick Patio
- Storage Shed
- Flower and Vegetable Gardens, unusual specimen trees (Dawn Redwood, Katsura Tree, spring-flowering Witch-Hazel; huge Magnolia in front yard)

ADDITIONAL FEATURES

- 2 zone Heat/AC

THE FLOORPLAN





CELL: 973.936.9129
OFFICE: 973.376.0033 x101
EMAIL: info@sueadler.com
sueadler.com/12Chestnut

