

kw PREMIERE
PROPERTIES
KELLER WILLIAMS
*Each Keller Williams office is
individually owned and operated.*

sueadler 
THE #1 KELLER WILLIAMS TEAM IN NEW JERSEY **team**

9 Red Road

Chatham, New Jersey



Welcome to 9 Red Road located in prestigious Chatham blocks to Washington Elementary and so close to Chatham Farmer's Market, Midtown Direct Train, and Chatham's fabulous downtown restaurants and shopping. This stunning Craftsman-style home is the epitome of perfection with expert craftsmanship, top-notch renovations, and timeless style. Stroll up to 9 Red Road and take in the gray shake cedar siding exterior, bays of windows, charming shutters and meticulous landscaping that all contribute to wonderful curb appeal. The idyllic, relaxed bluestone Front Porch, with cedar railings and a serene porch swing, is just waiting for breezy days with family and friends. Enter through the original front door into the elegant Entry Foyer with high ceilings, original moldings, and original hardwood floors that carry throughout the First Level. Flow easily into the light and bright Living Room featuring an oversized and stately original fireplace (with a gas log set), a cozy window seat and plenty of room for entertaining.





Dinner parties and family dinners are divine in the large Formal Dining Room with two sets of warm gray, gracious built-ins, oversized windows (1 with original leaded glass) and a lovely chandelier. Flow easily from the Dining Room through the custom Pantry with tons of storage so everything will be neatly tucked away. The Gourmet Chef's Kitchen is sure to satisfy any chef's desire. Crisp white shaker cabinetry, thick concrete countertops, an island with quartz countertops and high-end stainless steel appliances are the best in form and function. Every inch of the kitchen has been custom and smartly designed. The Kitchen opens up to a fabulous fiberglass Deck, with cool horizontal railings, perfect for al fresco dining and summer entertaining. The Deck overlooks the idyllic backyard with spaces for planting, play and enjoying a fire pit with friends. Back inside, a tasteful Powder Room, with a vanity with a concrete countertop, rounds out the First Level.

Ready to retire for the evening? The stately staircase leads to the Second Floor Landing which leads to exceptional design at every corner. Luxury abounds in the private Primary Bedroom Suite with a gorgeous bay of windows, a California Closet Walk In Closet and a second Custom Closet. It doesn't get better than the Primary Bathroom with a stunning oversized shower with designer tile, a fully custom vanity and tons of sunlight.

Bedroom 2 is steeped in sunlight and includes a bay of windows and original hardwood floors. Bedroom 3 boasts windows at two exposures and plenty of closet space. A cheery office, overlooking the front yard, is fully customized with a California Closets built in desk and cabinetry. Down the hall, don't miss the convenient Laundry Room and a charming Full Bath with a vintage clawfoot tub.





Take the open, wraparound staircase to the Third Level where you will find 2 additional bedrooms with vaulted ceilings, original quarter moon windows and custom closets. A renovated Full Hall Bath rounds out the Third Level. And that's not all! The Lower Level offers so much additional, functional space. An attached 2-Car Garage (a bonus for a house of this vintage) includes epoxy floors and carriage style garage doors. Outside of the garage, don't miss the Mud Room Area with plenty of room to store backpacks and sports equipment. A large Recreation Room, Play Nook and 2 Walk In Storage Closets (plus an additional Storage Room) and an updated Full Bath round out this level.

This is an amazing opportunity to own a vintage, classic home with all the modern amenities you desire. With fabulous schools, NYC transportation and Chatham's excellent shopping and restaurants, you will certainly want to call 9 Red Road home.

INSIDE & OUT

FIRST LEVEL

- Entry Foyer featuring original front door, original hardwood floors, high ceilings, chair rail, deep baseboard moldings, flush mount light fixture, open to Dining and Living Rooms, staircase to Second Level
- Step Down Rear Hallway, French door to Lower Level, hardwood floors, recessed light
- Living Room featuring original hardwood floors, gas fireplace with log set, brick surround/hearth and original mantle in warm gray, built in window seat, oversized windows at 3 exposures (1 with leaded glass transom), high ceilings, deep baseboard moldings, 2 openings to Entry Foyer (1 with French door), 2 Coat Closets
- Dining Room featuring original hardwood floors, tall ceilings, chair rail, warm gray original built ins flanking window with open and concealed storage, deep baseboard moldings, chandelier, oversized windows at 2 exposures (1 with leaded glass transom), open to Butler's Pantry
- RENOVATED Gourmet Chef's Kitchen featuring Chuck Bischoff custom cabinetry (with completely custom pullouts and smart storage), concrete countertops at exterior, warm gray island with quartz countertop (new 2021) and seating for 4, subway tile backsplash, GE Monogram integrated refrigerator/freezer, GE Monogram stainless double wall ovens, GE Monogram stainless 4 burner cooktop with griddle, Kitchen Aid stainless dishwasher, microwave, nook, stainless sink with gooseneck fixture, recessed lighting, 3 pendant lights over island, oversized sliding doors to Deck, Rear Staircase
- Butler's Pantry with Chuck Bischoff floor to ceiling custom cabinetry on both sides
- Powder Room featuring hardwood floors, vanity with concrete countertop, sconce over sink, recessed light, deep baseboard molding

SECOND LEVEL

- Front staircase with runner to Second Level, chair rail, window at landing, 3 level pendant light fixture
- Second Level Landing featuring original hardwood floors, Linen Closet, flush mount light
- Primary Bedroom Suite featuring original hardwood floors, bay of windows, ceiling fan, deep baseboard molding
- Primary Dressing Room featuring pocket door at entry, Walk In Closet with California closets custom storage, 2nd Closet with custom storage, recessed lighting
- Primary Bath (new 2019) featuring pocket door at entry, Chuck Bischoff fully custom vanity with concrete countertop, medicine cabinet, wood look tile flooring, frameless glass oversized shower with designer tile and storage nooks, window, recessed lighting, built in cabinetry and open shelving

- Office featuring hardwood floors, California Closets built in desk area and storage, window, sconce
- Bedroom 2 featuring original hardwood floors, bay of windows, deep baseboard molding, Closet with custom storage, sconce
- Bedroom 3 featuring original hardwood floors, windows at 2 exposures, deep baseboard molding, Closet with custom storage, sconce
- Rear Hallway with hardwood floors, recessed lighting, 2nd Linen Closet
- Laundry Room featuring hardwood floors, rear staircase with Dutch door at top, built in shelves, nook for Laundry featuring Kenmore washer and Maytag dryer, window, desk area, recessed lighting
- Full Bath featuring hardwood floors, pedestal sink, reglazed clawfoot tub, 3 light sconce, beadboard wainscoting, window

THIRD LEVEL

- Open wraparound carpeted staircase to Third Level, windows at landing
- Third Level Landing featuring carpeting, vaulted ceiling, storage area, baseboard molding
- Full Bath featuring NEW wood look flooring, NEW vanity with quartz countertop, shower with tumbled tile surround, sconce over vanity, light/fan, baseboard molding
- Bedroom 4 featuring carpeting, vaulted ceiling, built in ledge and 2 quarter moon windows, ceiling fan, high window seat with built in shelving in dormer area, recessed lighting, Closet with California Closet custom storage, baseboard molding
- Bedroom 5 featuring carpeting, vaulted ceiling, built in ledge and 2 quarter moon and 1 regular window, dormer area, ceiling fan, recessed lighting, Closet with California Closet custom storage, baseboard molding

LOWER LEVEL

- Wood staircase to Lower Level
- Attached 2 Car Garage with epoxy flooring, carriage style electric door, storage, door to driveway, exterior lanterns
- Landing/Mud Room Area featuring carpeting, hook storage, Kenmore refrigerator/freezer, double door deep Closet with floor to ceiling shelving, recessed lighting, Utility Closet
- Step down Full Bath (renovated 2021) featuring tile flooring, vanity with quartz countertop, recessed lighting, medicine cabinet, shower with tile surround, window
- Recreation Room featuring carpeting, recessed shelving, recessed lighting, utility closet, 2 Walk In Storage Closets,
- Play Nook featuring recessed shelving, carpeting, recessed lighting
- Enormous Storage/Utility Room
- Sump pump, French drains

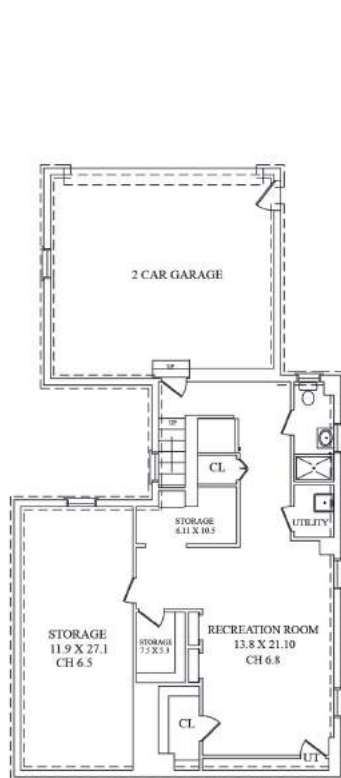
FRONT & BACK YARD

- Paver front walkway, crisp front landscaping with neat hedges and blooming perennials
- Front Porch featuring bluestone flooring, cedar railing, beadboard ceiling, porch swing
- Oversized Deck with fiberglass flooring (new 2017), horizontal wood railings (new 2017), pergola, staircase to backyard, gas hookup for grill
- Large driveway with parking and area for play
- Storage under deck
- Deep, flat yard with privacy in bloom, mature specimen trees and blooming perennials
- Stone Fire Pit/Entertainment Area
- Storage Shed

ADDITIONAL FEATURES & UPGRADES

- Freshly painted soothing neutrals and grays throughout (2021)
- Original doors and hardware throughout
- Tall ceilings, classic moldings throughout
- Tankless water heater/water softener
- Marvin replacement windows
- Newer gutters
- Newer roof
- Heat/AC, 2 zones, all systems replaced/maintained over the years, insulation done by Pipeworks to make the home energy efficient
- Ring doorbell
- Generator hookup

THE FLOORPLAN



LOWER LEVEL



FIRST LEVEL



SECOND LEVEL



THIRD LEVEL

sueadler.com/9Red

NOT TO SCALE - This floor plan is provided for illustration purposes only.
Room positions and dimensions are approximate and should be independently measured for accuracy.



CELL: 973.936.9129

OFFICE: 973.376.0033 x101

EMAIL: info@sueadler.com

sueadler.com/9Red



Each Keller Williams office is individually owned and operated.

