

**kw** PREMIER  
PROPERTIES  
KELLERWILLIAMS.  
*Each Keller Williams office is  
individually owned and operated.*

PRESENTED BY  
**sueadler**   
THE #1 KELLER-WILLIAMS TEAM IN NEW JERSEY **team**



10 Shelley Road  
Short Hills, New Jersey





Welcome to 10 Shelley Road!

This picture perfect, over 4400 square foot, 4 Bedroom, 4 and ½ Bath home, located in the sought after Poet's section of Short Hills, hits all the right notes. Enjoy all this home has to offer with top notch schools, proximity to New York City, Midtown Direct Train and downtown Millburn shopping and restaurants.

Drive up the private and tranquil, tree-lined street and stroll right up the charming walkway to the welcoming front door.

Step inside the Entry Foyer featuring hardwood floors and a generous Coat Closet. This level includes incredible flow and the open floorplan buyers desire.

Enter the blissful sundrenched Living Room with a stunning fireplace, custom built-ins, and plenty of room to entertain guests.

---



PARIS



VANITY FAIR









Flow easily into the luminous Dining Room with sleek grass cloth wallpaper, a chic light fixture, and custom built-ins. The outstanding Gourmet Chef's Kitchen will make you the envy of all your friends. Custom cabinetry, quartz countertops, a Breakfast Bar and Island, and high-end stainless appliances are extraordinary. The Breakfast Area, with a chic built in banquette, is the best in form and function.







The open and airy adjacent Family Room, with a soaring ceiling with new skylights and windows/doors at 3 exposures, is the perfect spot for game night or entertaining friends.





Ready to retire for the evening? Take the staircase to find 2 generously sized bedrooms, all with roomy closet space and plenty of natural light. Bedroom 1 is spacious and well-designed with an ensuite Full Bath. Two bedrooms were combined to make a large Bedroom 2. If desired, new owners can remodel for a potential fifth bedroom. Bedroom 2 uses the tasteful Full Hall Bathroom. Privacy abounds on the Third Level with an open and roomy Primary Bedroom Suite encompassing the entire Third Floor. The Primary Suite boasts tons of sunlight through new skylights and 2 fully custom Walk In Closets with custom drawers, shelving and hanging storage. A well-appointed Bath, with a double vanity, tub and shower, rounds out this level. And it doesn't end there. Move easily to the private and spacious Fourth Level where you will find an Office with Custom Built In Desk Areas and Bedroom 4. Two closets, a Full Bath and plenty of storage add immense functionality to this level.

---





And there's more!

Take a few steps down from the Kitchen to the spacious hallway with access to the Lower Level with a 2 car garage, the backyard and plenty of space to serve as a mudroom with cubbies. A spacious Laundry Room and Half Bath are conveniently located down the hall. Few steps down to the Basement Level, don't miss the Recreation Room and adjacent Media Room perfect for Oscar parties, gaming, and tween hangs. A Storage Room could easily serve as a Wine Cellar or is great for tucking away all clutter.

---





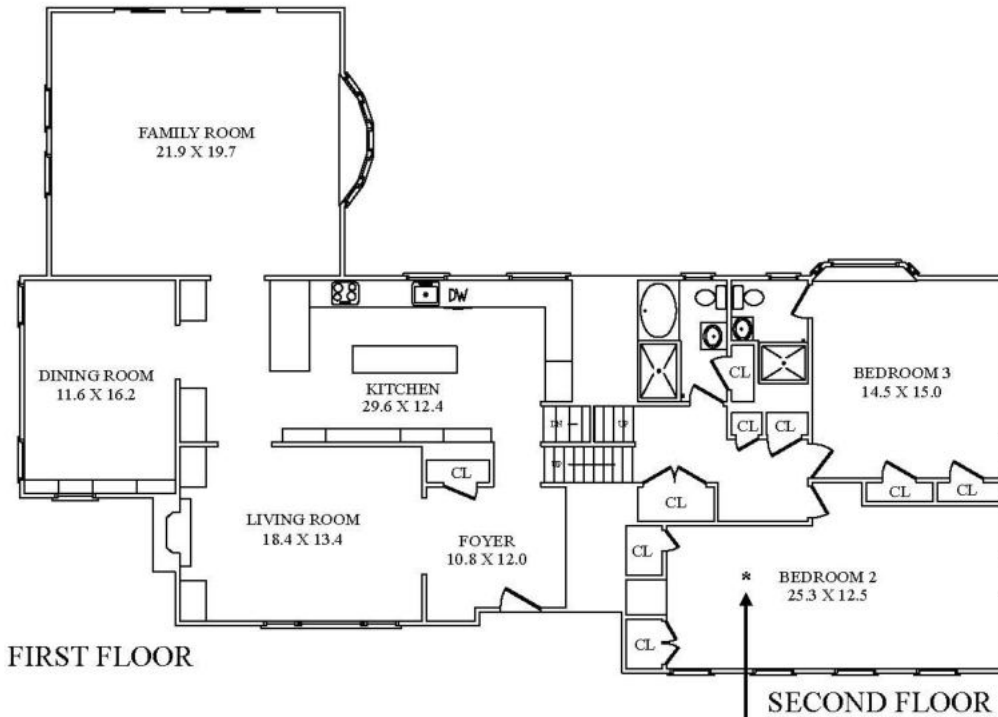


The picturesque, large and flat backyard, with lush green grass and a beautiful 2-Tiered Deck and Paver Patio, is the perfect place for play, al fresco dining, or spending time with friends. Simply put, this outdoor retreat will provide hours of enjoyment.

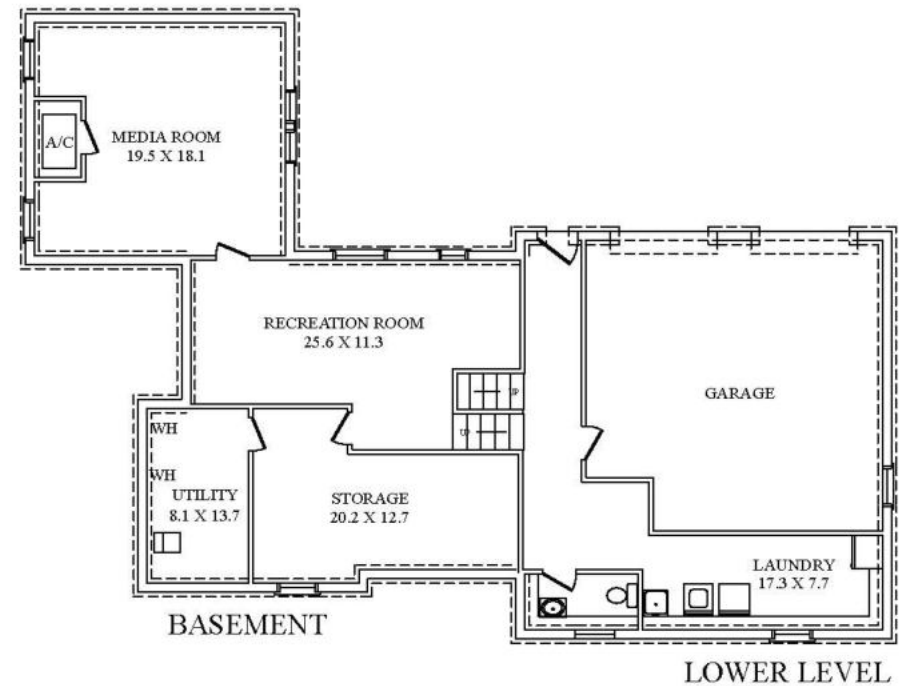
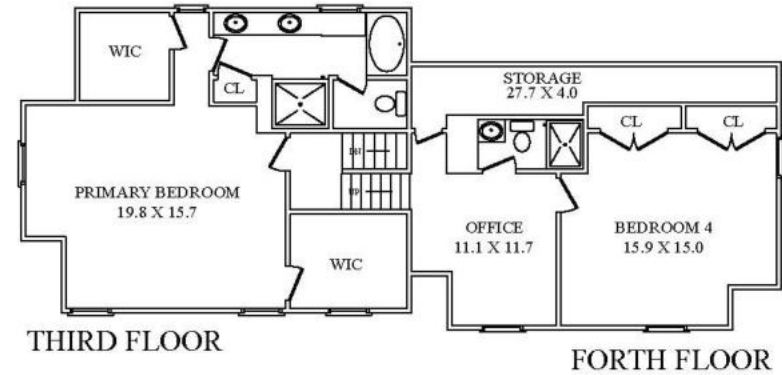
With its incredible sought-after neighborhood, top-notch Millburn schools, proximity to the Short Hills Mall and Midtown Direct Train, 10 Shelley Road is an absolute must see.



# THE FLOORPLAN



\*Two bedrooms were combined to make one large Bedroom 2. If desired, new owners can remodel for a potential fifth bedroom.



NOT TO SCALE - This floor plan is provided for illustration purposes only. Room positions and dimensions are approximate and should be independently measured for accuracy



---

# INSIDE & OUT

---

## FIRST LEVEL

- Entry Foyer featuring hardwood floors, cool gray hue, recessed lighting, chandelier, baseboard molding, crown molding, Coat Closet
- Staircase with designer runner leading to 2nd level
- Living Room featuring hardwood floors, fireplace with custom millwork mantle and stone surround, custom built ins with open and concealed storage flanking fireplace, recessed lighting, large picture window with custom woven shades
- Dining Room featuring hardwood floors, custom built ins with open and concealed storage, grass cloth wallpaper, windows at 2 exposures with custom window treatments, chandelier with drum shade, recessed lighting, crown molding, baseboard molding
- Renovated Gourmet Chef's Kitchen featuring hardwood floors, custom cabinetry to ceiling including glass door cabinetry, island, quartz countertops, marble tile backsplash, 1 built in stainless microwave, 2 ovens (1 gas oven/range - stainless with 6 burners, 1 electric), fully integrated refrigerator freezer with ice/water dispenser, dishwasher, custom hood, pendant lighting with glass shades over island, recessed lighting, Bar Area with Built in warm wood cabinetry and glass door cabinetry, Breakfast Bar
- Breakfast Area with built in banquette and built in storage
- Family Room featuring hardwood floors, cathedral ceiling new skylights (with shades), rustic beam, bay of windows, chandelier, recessed lighting, sliding doors/windows at 3 exposures, custom window treatments, baseboard molding, painted soothing gray hue

## SECOND LEVEL

- Second Level Landing featuring Double Door Closet, 2 Linen Closets
- Bedroom 2 featuring carpeting, windows at 2 exposures, 2 Closets with built in shelving, crown molding, (two bedrooms were combined into one large bedroom - see floor plan)
- Ensuite Bedroom 3 featuring carpeting, bay window, chandelier, 2 Closets with built in drawers and shelves, crown molding, baseboard molding, Bath
- Full Hallway Bathroom featuring tile flooring, pedestal sink, beadboard wainscoting, built in tub with tile surround, glass door shower with tile surround, sconces, recessed lighting, window

## THIRD LEVEL

- Primary Bedroom Suite featuring carpeting, windows at 3 exposures, new skylights, custom window treatments, light/fan, 2 Walk In Closets with custom drawers, shelving and hanging storage, architectural window
- Primary Bath featuring window, tile flooring, double vanity with storage, custom mirrors, built in jetted tub, recessed lighting, medicine cabinet, separate water closet, shower, Linen Closet

## FOURTH LEVEL

- Office featuring carpeting, vaulted ceiling, Built In Desk Areas, window, recessed lighting, baseboard molding,
- Bedroom 4 featuring carpeting, vaulted ceiling
- Full Bath

## LOWER LEVEL

- Stairs down from kitchen
- Lower Level Hallway with access to garage and exterior door leading to backyard
- 2 car garage
- Laundry Room
- Half Bath featuring tile flooring, vanity, window, baseboard molding

## BASEMENT LEVEL

- Recreation Room
- Media Room
- Storage Room
- Utility Room

## FRONT/BACKYARD

- 1/3 Acre
- Front walkway
- Covered Front Entry
- 2-Tiered Deck
- Paver Patio
- Flat grassy area for play
- Mature trees and professional landscaping
- Driveway with basketball hoop

## ADDITIONAL FEATURES/UPGRADES

- Newer water heater
- Newer HVAC (3 units)
- Whole house generator
- New roof
- New skylights

Cell: 973.936.9129

Office: 973.376.0033 ext.101

E-mail: [info@sueadler.com](mailto:info@sueadler.com)

[sueadler.com/10Shelley](http://sueadler.com/10Shelley)





**kw** PREMIER  
PROPERTIES  
KELLERWILLIAMS.  
*Each Keller Williams office is  
individually owned and operated.*



Listing Specialist  
**Melissa DiMartini Bulwith**

PRESENTED BY  
**sueadler**   
THE #1 KELLER WILLIAMS TEAM IN NEW JERSEY **team**