



Each Keller Williams office is
individually owned and operated.



Welcome Home

23 Elmwood Avenue
Chatham Borough, NJ



Welcome to 23 Elmwood Avenue! Don't miss this absolutely picture perfect 4 Bedroom, 2 ½ Bath historic stunner in the heart of Chatham's coveted Manor Section close to downtown restaurants/shopping, the Farmer's Market, Midtown Direct Train, Memorial Park and Milton Avenue Elementary. Don't blink because this home won't last.



As you arrive, admire the gorgeous exterior oozing with historic charm. Take in the fabulous Front Porch perfect for summer evenings and rocking chairs. Enter into the Entry Foyer and you know you have arrived somewhere special. The Entry Foyer exudes charm with its stately original staircase, fireplace, and elegant custom moldings. Flow easily into the Living Room, which is sure to be your favorite spot to cozy up and entertain surrounded by natural light through the two large windows. On the other side of the Entry Foyer, the Den/Office, with windows at two exposures, offers the flexibility for a second entertaining space or the perfect setting for your Zoom meetings. Get ready to host guests and dinner parties in the luminous Dining Room featuring hardwood floors and soothing hues.



Any chef is sure to be impressed with the Gourmet Chef's Kitchen featuring tons of custom cabinetry, an oversized island with seating, granite countertops and high-end stainless steel appliances. Enjoy your morning coffee in the dreamy Breakfast Room overlooking the idyllic property. Off the Kitchen, prepare to be impressed by the spacious Family Room with custom built-ins and beautiful windows filling the room with sunlight. The Family Room leads to the outdoor Deck making indoor/outdoor entertaining seamless. The Deck overlooks the lush, level property with immense privacy and great space for outdoor entertaining. Back inside, a tasteful Powder Room, a Study Nook and Mud Room round out the First Level.







When it's time to retire for the evening, take the stately staircase (there is also a rear staircase) to the Second Level where you will find 4 gorgeous Bedrooms. The Primary Bedroom dazzles with a magnificent bay of windows and its own Dressing Room. All other bedrooms are steeped in sunlight and include ample closet space. A spacious, updated Hallway Full Bath is the perfect complement to this level. Move up to the Third Level where you will find tons of storage space and a Bonus Room/Office perfect for working from home.

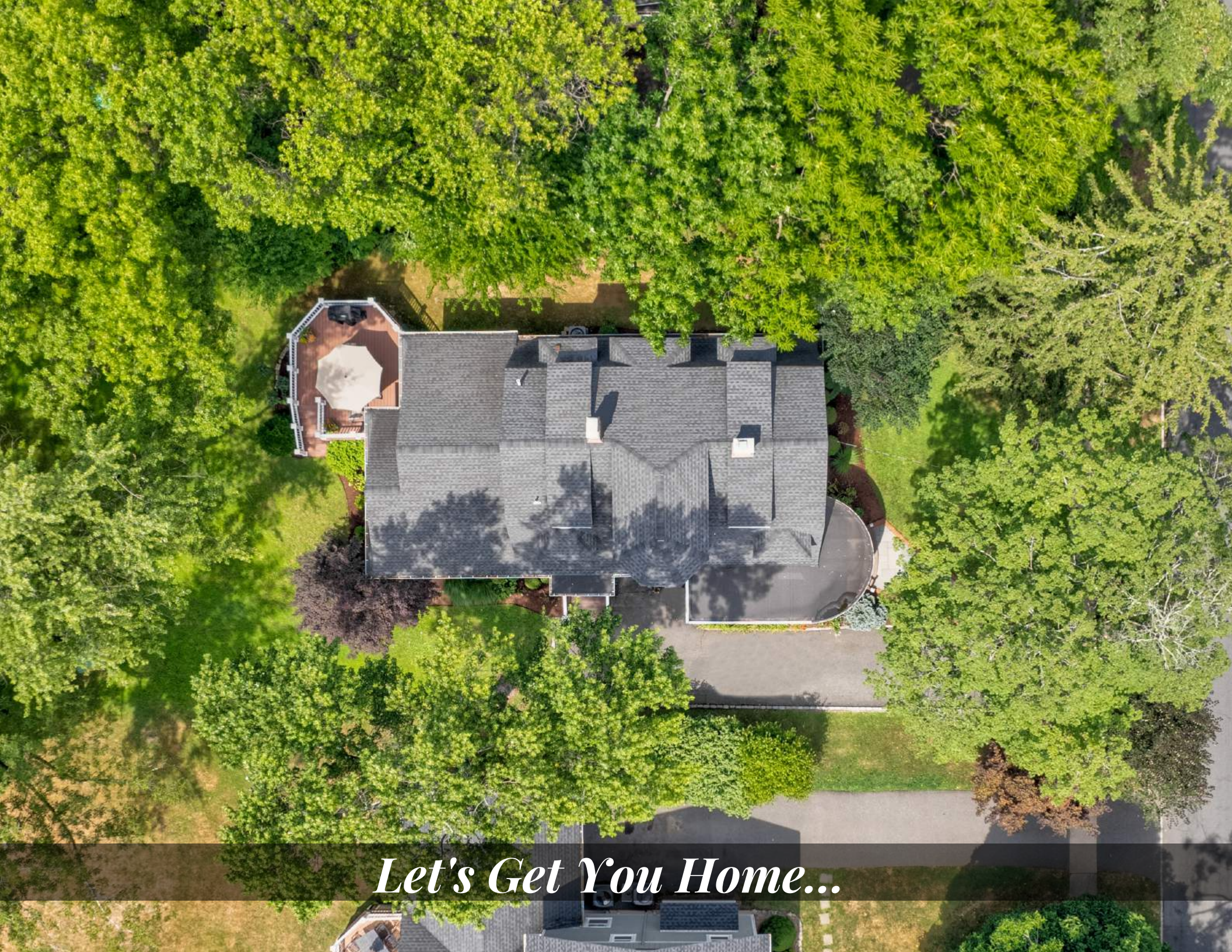




And that's not all! The spacious Lower Level includes a large Recreation Room with tons of storage space. Whether it's TV watching, arts and crafts or dramatic play, there's room for it all. A well-appointed Full Bath, a Laundry Room and Storage Room round out the Lower Level.

23 Elmwood Avenue is the perfect home in the best location. With easy access to restaurants and shopping, proximity to Milton Elementary and Midtown Direct Train, this home is a must see and won't last at this price!





Let's Get You Home...

INSIDE & OUT

FIRST LEVEL

- Entry Foyer featuring original front door, hardwood floors, original wraparound staircase with original moldings, decorative fireplace, Coat Closet, built in seat
- Office/Den featuring hardwood floors, windows at 2 exposures, lantern, baseboard molding, arched entry with decorative pillars to Dining Room
- Dining Room featuring hardwood floors, large window, baseboard molding, arched entry with decorative pillars to Kitchen
- Living Room featuring hardwood floors, 2 windows, baseboard molding
- Gourmet Chef's Kitchen featuring hardwood floors, custom wood cabinetry including glass door cabinetry, granite countertops, 9' island with seating for 5, farmhouse sink, pendant lighting, recessed lighting, Thermador stainless cooktop, stainless refrigerator/freezer, Miele dishwasher, Thermador stainless double wall ovens, built in desk area with open shelving above, French door to Lower Level, baseboard molding
- Breakfast Room featuring hardwood floors, chandelier, bay of windows, 2 windows on other side
- Family Room (open to Kitchen) featuring hardwood floors, large bay window, custom built in with open and concealed storage, ceiling fan, recessed lighting, baseboard molding, door to Deck
- Powder Room featuring furniture style vanity with granite countertop
- Study Nook with built-in filing cabinets
- Mud Room featuring tile flooring, lanterns, access to side entry, double Closet
- Rear staircase to Second Level

SECOND LEVEL

- Staircase to Second Level, window with diamond panes
- Primary Bedroom featuring hardwood floors, bay of windows with custom built in window seat with storage, built-in open shelving, baseboard molding, arched entry to Dressing Room, Closet, 2nd oversized Closet
- Bedroom 2 featuring hardwood floors, 2 windows, sconces, baseboard molding, double sized Closet
- Bedroom 3 featuring hardwood floors, windows at 2 exposures, flush mount light fixture, baseboard molding, Closet
- Bedroom 4/Office featuring hardwood floors, windows at 2 exposures, baseboard molding, Closet
- Full Hall Bath featuring tile flooring, heated floors, wall to wall vanity with stone countertop, oversized medicine cabinet with shelving, tub, recessed lighting, separate room with shower and toilet, separate linen closet
- Storage

THIRD LEVEL

- Office/Bonus Room
- Cedar Closet
- Attic Storage

LOWER LEVEL

- Recreation Room featuring carpeting, tile, drop ceiling with recessed lighting, and multiple storage closets with custom shelving
- Full Bath featuring pedestal sink, bead board wainscoting, shower, recessed lighting
- Laundry Room
- Storage Room

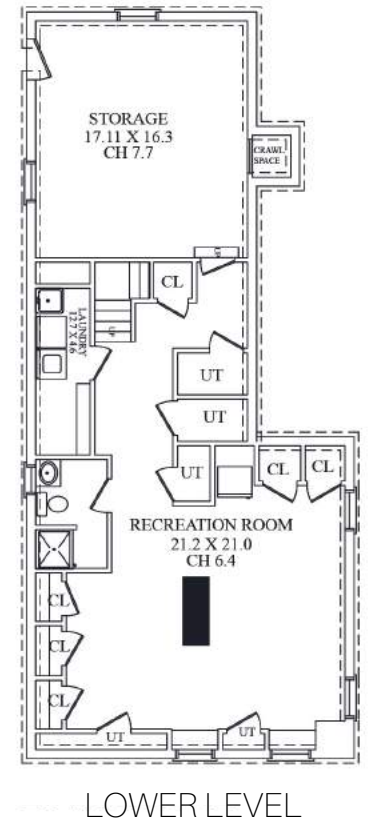
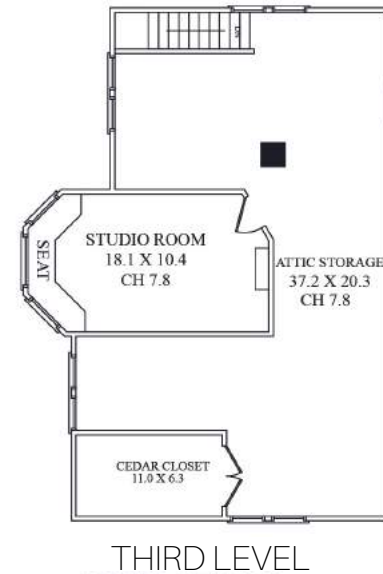
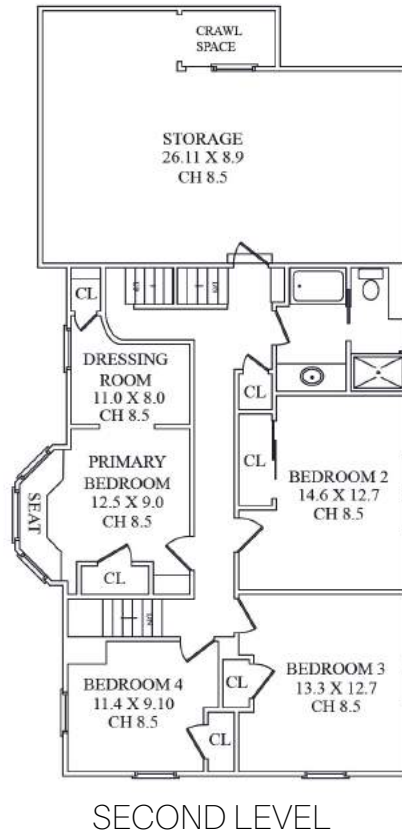
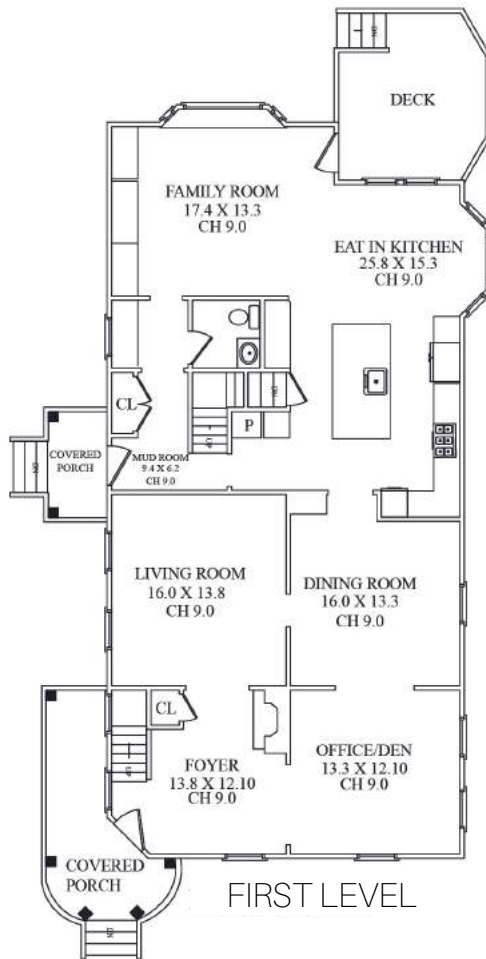
ADDITIONAL FEATURES & UPGRADES

- Original, deep custom moldings throughout
- High ceilings throughout

FRONT/BACKYARD

- 1/3 acre
- Front Porch with wood flooring, bead board ceiling, lanterns, porch swing
- Professional landscaping
- Bluestone front walkway with brick border
- Flat property, mature specimen trees, professional landscaping
- Rear Deck
- Storage Shed
- Irrigation

THE FLOORPLAN



NOT TO SCALE - This floor plan is provided for illustration purposes only.
Room positions and dimensions are approximate and should be independently measured for accuracy

PRESENTED BY
sueadler 
THE #1 KELLER WILLIAMS TEAM IN NEW JERSEY **team**

kw PREMIER
PROPERTIES
KELLERWILLIAMS

Each Keller Williams office is individually owned and operated.



Listing Specialist
Amy Deuchler

CELL: 973.936.9129
OFFICE: 973.376.0033 x101
EMAIL: info@sueadler.com
sueadler.com/23Elmwood