



357 Shunpike Road  
Chatham, New Jersey





Drive up to 357 Shunpike and you will instantly see that this is not your ordinary center hall colonial. A stone covered front entry, classic shutters and a paver front walkway all contribute to this home's exceptional curb appeal. This pristine and stately 5 Bedroom, 4.1 Bath home, in the heart of Chatham, simply cannot be missed!

Enter through the classic original wood door into the warm and welcoming 2-Story Entry Foyer complete with hardwood floors, 2 California Coat Closets and an elegant staircase leading to the Second Level. This home boasts high ceilings, great flow and an open and airy floorplan for easy everyday living. The spacious and bright Living Room is an entertainer's dream with its exceptional statement fireplace with stone surround and a custom millwork mantel. Dinner parties are divine in the Formal Dining Room complete with a gorgeous, coffered ceiling, regal wainscoting and oversized windows where the sunlight pours in.

Off of the Dining Room, don't miss the Butler's Pantry with custom cabinetry and a wine refrigerator ... the perfect spot to fix your guests' cocktails. The Butler's Pantry connects easily to the impressive Gourmet Chef's Kitchen that will satisfy any cook's desire. Crisp white custom wood cabinetry with a gorgeous custom island with a breakfast bar, granite countertops, chic pendant lights and top of the line Viking stainless appliances make the Kitchen extraordinary.

A dreamy Breakfast Room and Double Door Pantry only add to the Kitchen's appeal. The Breakfast Room leads out to a substantial Deck perfect for al fresco dining or just spending time with friends and includes a large retractable awning perfect for sunny days. Another showstopper of the First Level is the amazing Family Room off of the Kitchen and Living Room. Enjoy movie night or cuddling up by the fireplace in this sundrenched room overlooking the idyllic backyard. Rounding out the First Floor are a tasteful Powder Room, Laundry/Mud Room, with a Walk In California Closet, and a 3 Car Garage.











Ready to retire for the evening? Take the graceful staircase to the roomy Second Floor Landing that overlooks the Entry Foyer. Enjoy immense privacy, a cozy fireplace, a tray ceiling, 2 California Walk In Closets and a spa-like Bath in the stellar Primary Suite. Four other bedrooms are steeped in sunlight and include plenty of closet space. Bedrooms 2 and 5 share the spacious Full Hall Bath. Bedrooms 3 and 4 share the well-appointed Jack and Jill Bath. There is also access to a Third Level with TONS of storage that runs the full length of the house. And that's not all! The Lower Level provides plenty of additional living space with a sizable, Recreation Room/Playroom (flexibly being used as additional workout space) perfect for movie watching or arts and crafts.





There is also a state-of-the-art Exercise Room making workouts a breeze. A large Office is ideal for working from home. A Full Bath, tons of storage and a utility room round out the Lower Level. Another jewel of 357 Shunpike is the scenic, park-like property featuring immense privacy. There is room for it all in this backyard ... outdoor play, gardening or evenings by a fire pit.

With its prestigious neighborhood, close proximity to Midtown Direct Train and New York City, top notch schools and convenience to fantastic shopping and restaurants, 357 Shunpike checks each and every box and cannot be missed!



---

# INSIDE & OUT

---

## FIRST LEVEL

- 2-story Entry Foyer featuring hardwood floors, door with sidelites and transom, 2 custom Coat Closets, wainscoting, chandelier, recessed lighting, staircase to Second Level
- Living Room featuring hardwood floors, gas fireplace with stone surround and custom millwork mantle, oversized windows at 2 exposures, recessed lighting, crown molding, baseboard molding, open to Family Room
- Dining Room featuring hardwood floors, coffered ceiling, wainscoting, recessed lighting, chandelier, in ceiling speakers, 2 oversized windows, baseboard molding
- Family Room featuring hardwood floors, gas fireplace with stone surround and custom millwork mantle, oversized windows at 2 exposures, recessed lighting, crown molding, baseboard molding, ceiling fan/light, surround sound, open to Living Room and Kitchen
- Gourmet Chef's Kitchen featuring tile flooring, crisp white custom cabinetry including glass door cabinetry, island with breakfast bar, granite countertops, tumbled tile backsplash, recessed lighting, in ceiling speakers, glass globe pendant lights over island, Viking stainless French door refrigerator/freezer, Viking stainless 6 burner oven/range, Viking stainless dishwasher, Viking stainless hood, 2 sinks
- Breakfast Area featuring tile flooring, sliding French doors, chandelier, recessed lighting, Double Door Pantry Closet
- Butler's Pantry featuring hardwood floors, crisp white custom cabinetry including glass door cabinetry, granite countertops, open wine rack storage, Kitchen Aid wine refrigerator, tumbled tile backsplash
- Mud Room/Laundry Room featuring tile flooring, door to garage, door to backyard, Walk In California Closet, Kenmore Elite front loader washer and dryer on stands, baseboard molding, recessed lighting
- Powder Room featuring tile flooring, pedestal sink, chair rail, baseboard molding, crown molding, recessed lighting
- 3 Car Garage with epoxy flooring, automatic doors and storage

## LOWER LEVEL

- Carpeting and wood staircase to Lower Level
- Recreation Room (being flexibly used as additional workout space) featuring cushioned flooring, recessed lighting, under stairs Closet, utility closet, baseboard molding
- Exercise Area featuring cushioned flooring, 3 Double Door California Closets with custom storage, recessed lighting, baseboard molding
- Office featuring carpeting, high shelves, track and recessed lighting, baseboard molding, utility closet
- Full Bath featuring tile flooring, vanity with beadboard accent, shower with tile surround, recessed lighting
- Utility Room

## SECOND LEVEL

- Second Floor Landing featuring hardwood floors, recessed lighting, crown molding, baseboard molding, gallery landing overlooking foyer, Closet, door to Third Level
- Primary Bedroom Suite featuring double doors at entry, hardwood floors, vaulted ceiling, gas fireplace with stone surround and custom millwork mantle, oversized windows at 2 exposures, ceiling fan/light, recessed lighting, baseboard molding, 2 California Closet Walk In Closets with custom hanging storage, shelving and drawers
- Primary Bath featuring tile flooring and tile wainscoting, custom wood double vanity with granite countertop, California Double Door Linen Closet, built in jetted tub, tiled shower with glass door, separate commode, recessed lighting, two 3-light sconces over vanity
- Bedroom 2 featuring hardwood floors, 2 oversized windows, ceiling fan, recessed lighting, baseboard molding, California Double Door Closet with custom storage
- Full Hall Bath featuring tile flooring, custom wood double vanity with granite countertop, tile wainscoting, tub/shower combination, recessed lighting, two 2-light sconces over vanity, window



## SECOND LEVEL CONT...

- Bedroom 3 featuring hardwood floors, oversized windows at 2 exposures, California Double Door Closet with custom storage, ceiling fan, recessed lighting, baseboard molding, door to Jack and Jill Bath
- Jack and Jill Bath featuring tile flooring and tile wainscoting, custom wood wall to wall double vanity with granite countertop, glass door shower with tile surround, window, separate commode 2 sconces, recessed lighting
- Bedroom 4 featuring hardwood floors, oversized windows at 2 exposures, California Double Door Closet with custom storage, ceiling fan, recessed lighting, baseboard molding, door to Jack and Jill Bath
- Bedroom 5 featuring hardwood floors, 2 oversized windows, Double Door Closet, ceiling fan, recessed lighting, baseboard molding

## THIRD LEVEL

- Unfinished storage space running full length of house

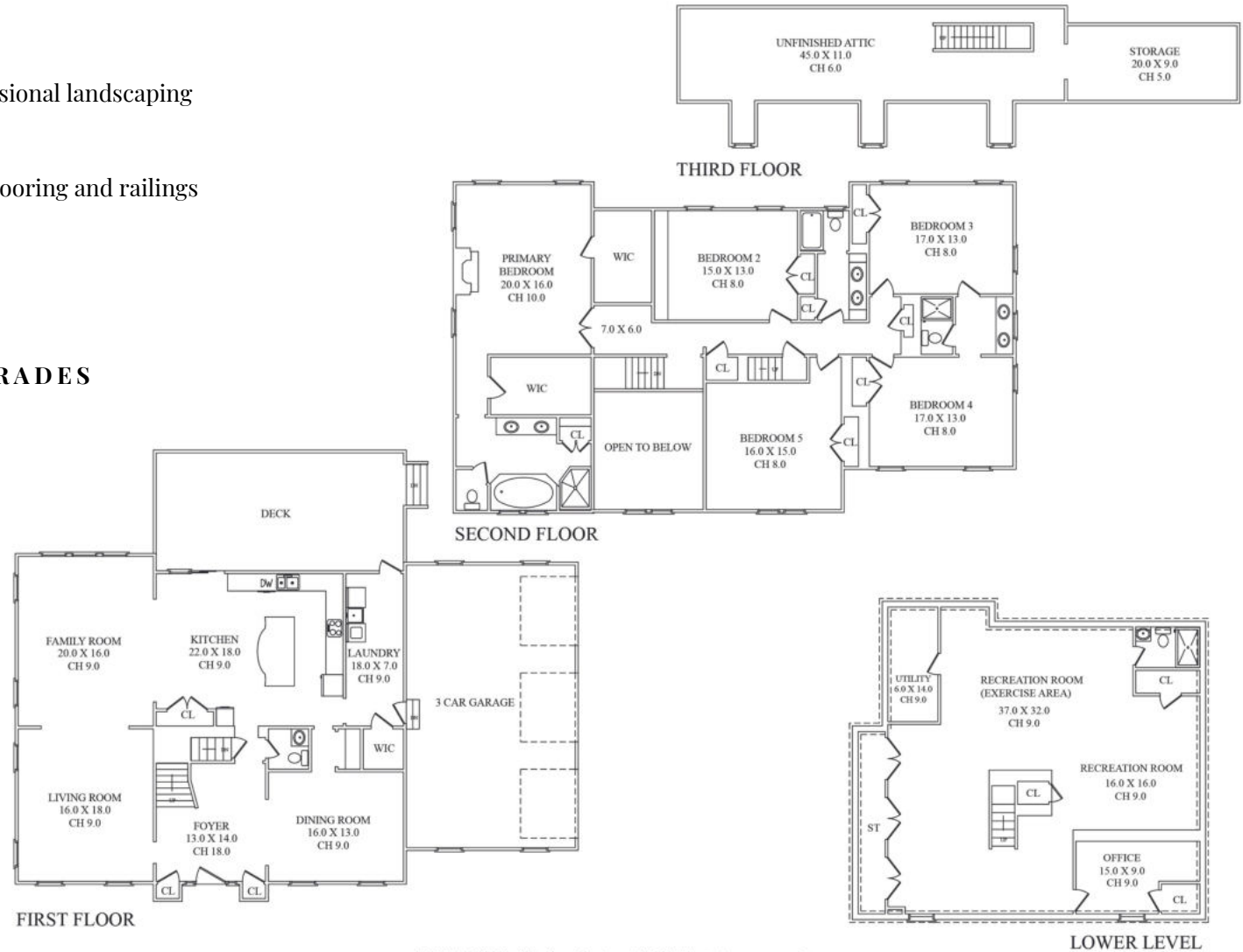
## FRONT & BACK YARD

- .5 Acre
- Lush front lawn with mature trees, professional landscaping
- Paver front walkway
- Covered front entry with stone façade
- Large Rear Deck with easy maintenance flooring and railings
- Retractable Awning, covers entire deck
- Mostly fenced-in, flat yard
- Storage Shed
- Irrigation system

## ADDITIONAL FEATURES & UPGRADES

- NEW water heater
- Easy maintenance siding
- Kohler full house generator
- Alarm system
- Heat/AC, 3 zones
- Andersen tilt windows
- Central vac
- Timberline roof
- Garage is fully equipped with GarageTek

# THE FLOORPLAN



NOT TO SCALE - This floor plan is provided for illustration purposes only.  
Room positions and dimensions are approximate and should be independently measured for accuracy





PRESENTED BY  
**sueadler**   
THE #1 KELLER WILLIAMS TEAM IN NEW JERSEY

**kW** PREMIER  
PROPERTIES  
KELLERWILLIAMS

Each Keller Williams office is individually owned and operated.



Amy Deuchler  
Listing Specialist

Cell: 973.936.9129  
Office: 973.376.0033 ext.101  
E-mail: [info@sueadler.com](mailto:info@sueadler.com)  
[sueadler.com/357Shunpike](http://sueadler.com/357Shunpike)