

# 29 Claremont Drive

## Short Hills, New Jersey





*Welcome to 29 Claremont! Move right into this picture perfect 5 Bedroom, 2 Full, 2 Half Bath side hall colonial on a sought after block in the Glenwood Section of Short Hills (great Halloween and Block Parties). With an exceptional location just steps from Glenwood School, downtown Millburn restaurants and shopping, Millburn High School (bus to MS), Short Hills Train Station and Hartshorn Arboretum, 29 Claremont is just waiting to be called home.*





*Drive up the tree-lined street and note the home's stone and shingle façade, covered front entry and wide driveway, all contributing to incredible curb appeal. Enter through the warm, wood front door into an Entry Vestibule with a spacious Coat Closet. Via a graceful arched entry (numerous arched entries carry through the first level), enter the Entry Foyer glowing with natural light. Move into the sun-drenched Living Room with its statement fireplace flanked by Built In Bookshelves. A chair rail and large window at front only add to this room's appeal. Move easily into the Office/Den perfect for everything from working from home, morning yoga or just simply curling up with a book. Don't miss the elegant formal Dining Room featuring hardwood floors, a chic pendant lantern and an original China Cabinet for displaying all your wares.*





*Flow easily into the extraordinary Chef's Gourmet Kitchen which is truly the heart of the home. Crisp, white wood cabinets, an island, granite countertops and top of the line stainless steel appliances make the kitchen the ultimate in function and style. And as if that wasn't enough, the generous Breakfast Room includes Built In Cabinetry and sliding doors with access to the idyllic backyard. The backyard offers a large Deck and flat grassy areas for gardening, play and fire pits. Indoor/outdoor entertaining is seamless making the home perfect for al fresco dinner parties or outdoor cocktails with friends. Back inside, a tastefully renovated Powder Room, with pretty beadboard wainscoting, rounds out the First Level.*













*Ready to retire for the evening? Take the stately staircase to the Second Floor Landing complete with hardwood floors and charming, original Linen Storage. Wander into the lovely Primary Bedroom Suite featuring hardwood floors, dual closets and a renovated ensuite Full Bath. Three other bedrooms are sundrenched, contain hardwood floors and generous closets. A renovated Full Bath with chic tile, a skylight and a double vanity rounds out the Second Floor. And it only gets better on the Third Level! Don't miss the outstanding Bedroom/Office with a Custom Built In Desk Area, Built In Bookshelves and skylights where the light pours in.*



*And there's more! The finished Lower Level adds immense living space to the home. A large Recreation Room, with zones for TV watching and Play (with a Custom Built In Desk and Entertainment Built In), offer plenty of extra space for movie watching, arts and crafts and/or work from home/homework options. Tons of storage, Laundry, a Cedar Closet and a well-dressed Half Bath round out this level.*

*Don't miss this great opportunity to own a home in one of Short Hill's best neighborhoods. Just minutes from Blue Ribbon schools, NYC transportation, Hartshorn Arboretum and downtown Millburn shopping, 29 Claremont is an absolute must see!*

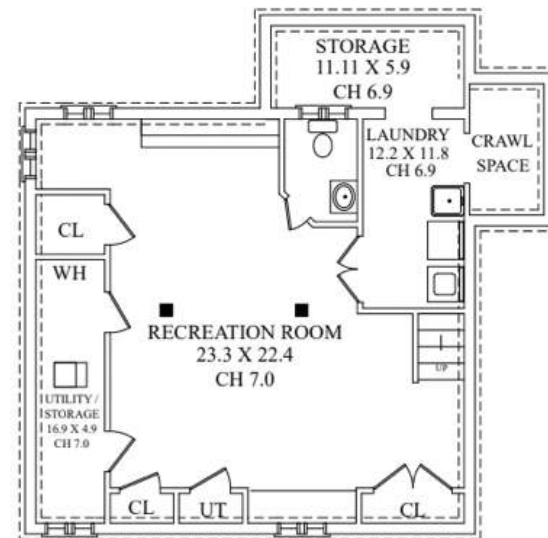
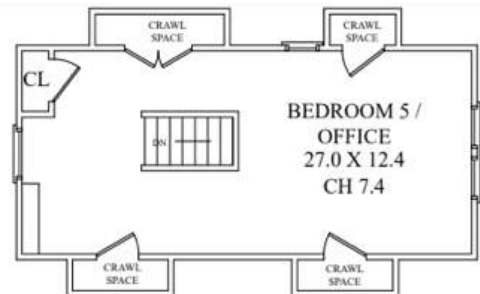
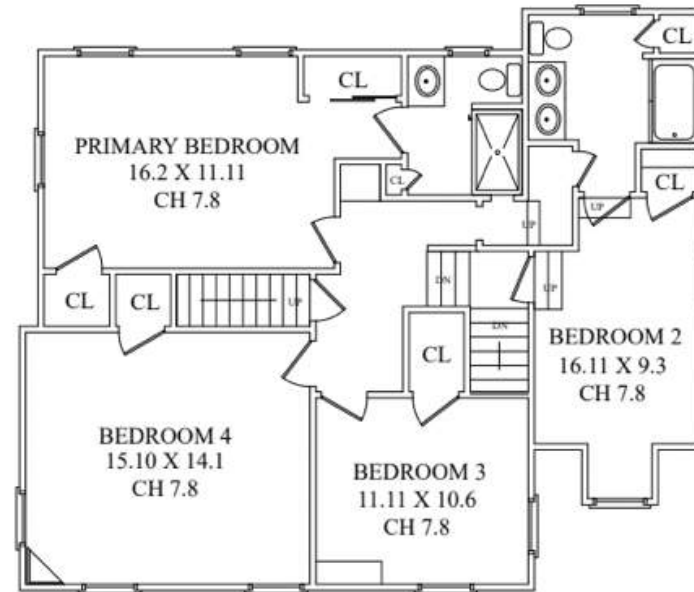
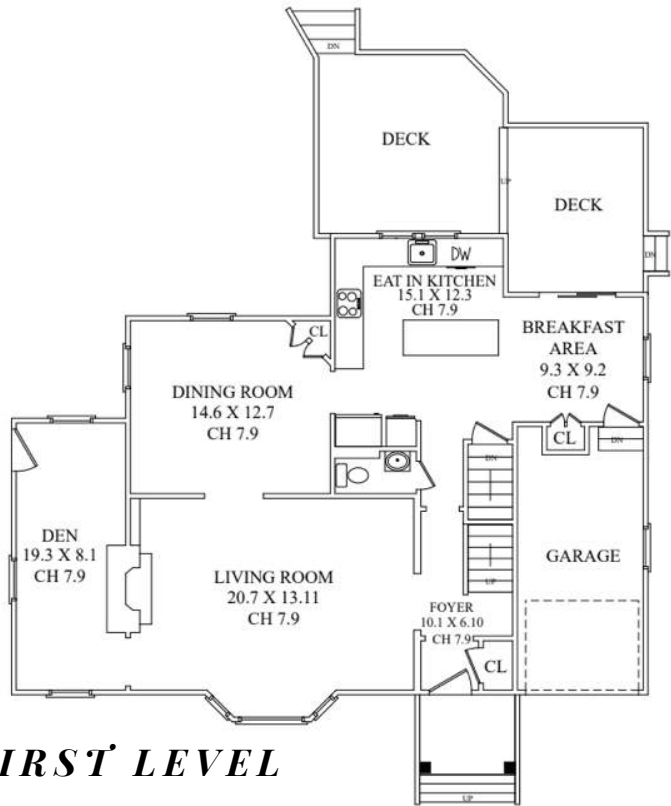








# THE FLOORPLAN



NOT TO SCALE - This floor plan is provided for illustration purposes only. Room positions and dimensions are approximate and should be independently measured for accuracy.



# - INSIDE & OUT -

## FIRST LEVEL

- Entry Vestibule featuring hardwood floors, Coat Closet, flush mount light, baseboard molding
- Entry Foyer featuring arched entry, hardwood floors, staircase to Second Level, crown molding, baseboard molding
- Living Room featuring arched entry, hardwood floors, bay window, fireplace with custom millwork mantle and brick surround, built in stove and blower, chair rail, Built In Bookshelves, recessed lighting, crown molding, baseboard molding
- Office/Den featuring hardwood floors, brick accent area, windows/door at 3 exposures, paneled walls and ceiling, flush mount light
- Dining Room featuring arched entry, hardwood floors, chair rail, original Built In China Cabinet, windows at 2 exposures, baseboard molding, crown molding, lantern, recessed lighting
- Gourmet Chef's Kitchen (2010 renovation and addition) featuring hardwood floors with radiant heat, custom white cabinetry including glass door cabinetry, island with seating for 3, granite countertops, tile backsplash, Viking stainless 6 burner cooktop, Kitchen Aid stainless built in microwave, Kitchen Aid stainless double wall ovens, Whirlpool stainless refrigerator/freezer, recessed lighting, bead board wainscoting, Breakfast Room, sliding French door, Built In Pantry, door to Garage, door to Lower Level
- Powder Room featuring hardwood floors with radiant heat, pedestal sink, beadboard wainscoting, vanity lighting
- 1 Car Garage

## SECOND LEVEL

- Staircase with runner to Second Level
- Second Floor Landing featuring carpeting, original Built In Linen Storage with drawers and cabinet, recessed lighting, baseboard molding, crown molding, door to Third Level
- Bedroom 1 (flexibly being used as Office, to the right at top of stairs) featuring hardwood floors, windows at 2 exposures, ceiling fan/light, Closet, door to Hall Bath, baseboard molding
- Bedroom 2 featuring hardwood floors, windows at 2 exposures, ceiling fan/light, recessed lighting, Closet, crown molding, baseboard molding
- Oversized Bedroom 3 featuring hardwood floors, windows at 2 exposures, ceiling fan/light, Closet, crown molding, baseboard molding
- Primary Bedroom Suite featuring hardwood floors, windows at 2 exposures with custom roman shades, ceiling fan/light, recessed lighting, Closet, Double Door Closet, crown molding, baseboard molding, Full Bath (renovated 2018) featuring tile flooring, window, vanity with quartz countertop, shower with rolling glass door and designer tile surround, 2 light sconce, recessed lighting, Linen Closet
- Full Hall Bath (renovated 2016) featuring marble look flooring, double vanity with solid surface countertop, tub/shower combination with glass door and subway tile surround, subway tile wainscoting, vaulted ceiling with skylight, 3 light sconce, recessed lighting, door to Bedroom 1

## THIRD LEVEL

- Renovated 2007
- Bedroom 5/Home Office featuring vaulted ceiling, skylights, recessed lighting, Built In Desk Area with multiple work stations, Built In Bookshelves
- Closet
- Eave storage

## LOWER LEVEL

- Renovated 2008
- Carpeted staircase to Lower Level
- Recreation Room featuring carpeting, baseboard molding, Built In Desk Area, Utility Closet with 2 doors, Storage Closet, recessed lighting, baseboard molding, Custom Built In with open and concealed storage, Areas for TV Watching and Play
- Cedar Closet
- Laundry/Utility/Storage Room, utility sink, LG front loader washer and dryer
- Half Bath featuring floor tile, pedestal sink, chair rail, recessed lighting, baseboard molding
- French drain with sump pump

## ADDITIONAL FEATURES / UPGRADES

- State-of-the-art ADT Security System, 4 cameras outside, 1 inside, doorbell camera
- Generac whole house generator
- Newer windows throughout
- All systems, interior and exterior meticulously maintained by homeowners since 2003
- Newer chimney steel liner, full chimney insert
- Newer Attic air handler
- Heat/AC improvements over years creating energy efficiency and decreased gas heating costs
- Newer roof (2007)
- New whole house surge protector (2022)
- 240 line in the Garage for EV vehicles
- Residential and Business Verizon lines

## FRONT YARD / BACKYARD

- Covered Front Entry/Portico, bluestone steps/landing, brick risers (built 2017)
- Widened driveway
- Rear Deck, grill with gas line
- Wood staircase too side area
- Grassy area for play, firepit
- Irrigation system





**sueadler**   
THE #1 KELLER WILLIAMS TEAM IN NEW JERSEY **team**

Cell: 973.936.9129  
Office: 973.376.0033 ext.101  
E-mail: [info@sueadler.com](mailto:info@sueadler.com)  
[sueadler.com/29Claremont](http://sueadler.com/29Claremont)

**kw** PREMIER  
PROPERTIES  
KELLERWILLIAMS.