



50 Gloucester Road
Summit, New Jersey



Welcome to 50 Gloucester Road! Beautifully situated on an enchanting lot in Summit's prestigious Woodland Park neighborhood, this elegant 5 Bedroom, 3 Full, 2 Half Bath stunner, is perfect in every way. A Gourmet Chef's Kitchen that wows, sun-drenched rooms, a magical Sun Room, fabulous work from home space and idyllic property are just a few of the hallmarks of this incredible home.



Drive up the winding, tree-lined street and immediately you will know you have arrived somewhere special. The exquisite, tiered gardens, brick walkway and cheery red door all contribute to the home's excellent curb appeal. Enter through the front door into the bright and sunny Entry Foyer with views of the Living Room, Family Room and Kitchen beyond. Flow easily into the sun drenched Living Room with a stately gas fireplace, gleaming hardwood floors and a row of windows overlooking the picturesque property. Working from home is a dream in the fully equipped Home Office with custom built-ins and 2 workspaces.





Dinner parties are divine in the elegant formal Dining Room perfect for intimate dinner parties or large family gatherings. Accessed from the Dining Room via double French doors, you will be completely transfixed by the best 4 Season Sun Room around. This tranquil and breezy space, with resplendent backyard views, is perfect for enjoying a cup of tea, evening cocktails or morning yoga.





The stunning Gourmet Kitchen is sure to satisfy every chef's desire. An abundance of custom, creamy cabinetry, a warm wood island, granite countertops and high-end Sub-Zero/Wolf/Thermador/Bosch/KitchenAid appliances are the best in form and function. Breakfast is served in the light-filled adjacent Breakfast Area with resplendent backyard views. This space easily accessed the backyard oasis (see below). Don't miss the fabulous Laundry Room off of the kitchen where it's easy to toss in a load of laundry. Beyond the Kitchen, you are sure to be impressed by the magnificent Family Room. This room, which includes a custom Built In and windows at two exposures, exudes relaxation and is well suited for family game night, movie watching or cocktails. A renovated Powder Room rounds out the First Level.



Ready to retire for the evening? Move down the hallway to find two of the home's five bedrooms. Prepare to relax in the private, roomy and sunlit Primary Bedroom Suite. Windows at two exposures, 2 custom Walk In Closets and a NEW renovated bath with chic finishes make this space ideal. Bedroom 2 is sunlit and includes plenty of closet space. A spacious, tasteful Full Hall Bath, with a double vanity, rounds out the First Level Sleeping Area. Take the staircase to the Second Level where you will find sunny and bright Bedrooms 3 through 5 with immense closet space. A tasteful Full Bath rounds out this level. In addition, this level includes access to additional walk-in attic/storage space which could be used for further home expansion.



And there's more! The enormous "Walk Out" Lower Level boasts a fully finished Recreation/Game Room perfect for endless hours of family entertainment. Take the Double French Doors out to the stunning 2-tiered Patio with a gorgeous Stone Fireplace and plenty of room for barbequing, lounging and dining. Extensive privacy landscaping, and other blooming perennials, ensure spectacular views for your guests. Back inside, don't miss the large Exercise Room, Mud Room, Work Room, Half Bath and a 2 Car Garage with additional built in storage and a temperature-controlled Wine Closet. Simply put, this spacious Lower Level adds tons of living space and functionality to the home. With its serene setting, spacious floor plan, tight knit neighborhood, easy access to Midtown Direct train service, exceptional school district and convenience to Summit's fantastic shopping and restaurants, 50 Gloucester Road is an extraordinary place to call home!

INSIDE & OUT

FIRST LEVEL

- Entry Foyer featuring hardwood floors, deep crown moldings, baseboard moldings, open to Family Room, Living Room and Kitchen, lantern, staircase to Second Level, Coat Closet
- Living Room featuring hardwood floors, gas fireplace with stone surround and custom millwork mantle, large picture window, recessed lighting, in ceiling speakers, deep crown moldings, baseboard molding
- Home Office featuring frosted glass double French doors at entry, hardwood floors, custom built in desk areas with 2 work spaces, built-in file drawers, concealed storage and open storage, windows at 2 exposures, recessed lighting, deep crown moldings, baseboard molding
- Dining Room featuring hardwood floors, double windows, chair rail, deep crown moldings, baseboard moldings, open to Kitchen, Living Room and Sun Room
- Family Room featuring hardwood floors, decorative pillars at entry, wainscoting, custom media built in, windows at 2 exposures, recessed lighting, deep crown molding, baseboard molding
- 4 Season Sun Room featuring double French doors at entry, tile flooring, casement windows/doors at 3 exposures, crown molding, baseboard molding, ceiling fan/light, separate natural gas heater, French sliding doors to rear staircase
- Gourmet Chef's Kitchen featuring double French doors at entry, hardwood floors, creamy white custom wood cabinetry with dentil detail molding, glass door cabinetry, granite countertops, tile backsplash, natural wood island with bar sink and breakfast bar, bread box, custom hood with decorative tile backsplash, 2 pendant lights over island, recessed lighting, in ceiling speakers, stainless sink overlooking backyard, nook for TV, Sub-Zero paneled refrigerator/freezer, NEW Bosch dishwasher, second KitchenAid dishwasher, Wolf 6 burner cooktop, Thermador stainless double wall ovens, coffee bar area with newer beverage/wine refrigerator, built in Desk Area
- Breakfast Area featuring hardwood floors, custom built in buffet area with open and concealed storage, recessed lighting, pendant light , sliding French door to outdoor Patio, door to Laundry Room, door to Powder Room
- Laundry Room featuring hardwood floors, Whirlpool Duet front loader washer and Bosch dryer built up, custom cabinetry with utility sink, wire shelving, hanging rod, light with drum shade, window,
- Powder Room featuring hexagonal Italian marble floor tile with mosaic and subway tile border, pedestal sink, recessed light, 2 sconces

FIRST LEVEL SLEEPING AREA

- Hallway featuring hardwood floors, flush mount light, 2 Linen Closets, deep crown moldings, baseboard moldings
- Primary Bedroom Suite featuring hardwood floors, windows at 2 exposures, 2 (his and hers) Walk In Closets with custom shelving, hanging storage and drawers, ceiling fan/light, crown molding, baseboard molding
- RENOVATED (2020) Primary Bath featuring wood look tile flooring, chic gray double vanity with marble countertop, 2 medicine cabinets, 3 sconces, recessed lighting, window, frameless glass door shower with decorative tile surround, baseboard molding
- Full Hall Bath featuring tumbled tile flooring, custom double vanity with linen storage and quartz countertop, window, tub/shower combination with tile surround, recessed lighting
- Bedroom 2 featuring hardwood floors, windows at 2 exposures, flush mount ceiling light, crown molding, baseboard molding, Double Door Closet

INSIDE & OUT

SECOND LEVEL

- Staircase to Second Level
- Bedroom 3 featuring vaulted ceiling, hardwood floors, 2 windows, ceiling fan/light, Double Door Closet, baseboard molding
- Bedroom 4 featuring vaulted ceiling, hardwood floors, 2 windows, flush mount ceiling light, Double Door Closet, baseboard molding, chalk wall
- Full Hall Bath featuring tile flooring, custom vanity with Corian countertop, tub/shower combination with tile surround, window, recessed lighting, baseboard molding
- Bedroom 5 featuring vaulted ceiling, hardwood floors, window, ceiling fan, recessed lighting, Walk In Closet, baseboard molding
- Door to Attic Storage (use for storage or potential to add on to house)

LOWER LEVEL

- Carpeted staircase to “walkout” Lower Level
- Recreation Room featuring luxury vinyl, large window, recessed lighting, gaming area, wall to wall custom built in with open and concealed storage, Double French Doors to Patio, Double Door Storage Closet, sconces
- Half Bath featuring tile flooring, wash basin sink, window, recessed lighting, baseboard molding
- Exercise Room featuring cushioned flooring, wainscoting, custom mirrors, Double Closet, recessed lighting, window, baseboard molding
- Storage Room with built-in cabinetry, peg storage, 3 Double Door Closet, laundry hook up
- Mud Room featuring tile flooring, custom cubbies, hook storage, recessed lighting, open shoe storage built in
- 2 Car Garage with built in storage, electric doors
- Temperature controlled Wine Cellar (in garage)

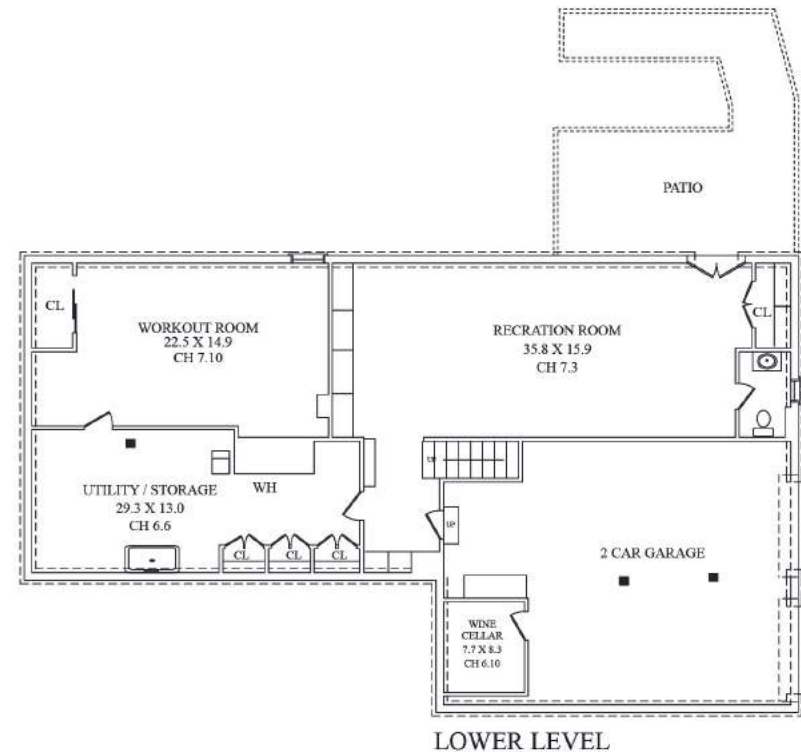
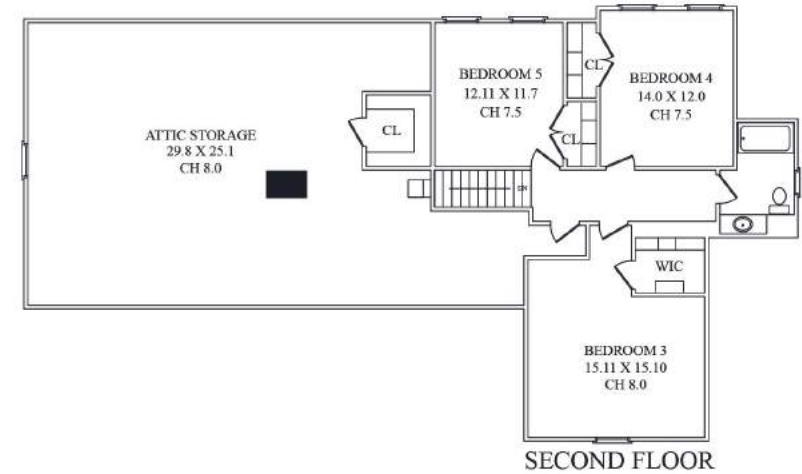
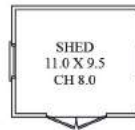
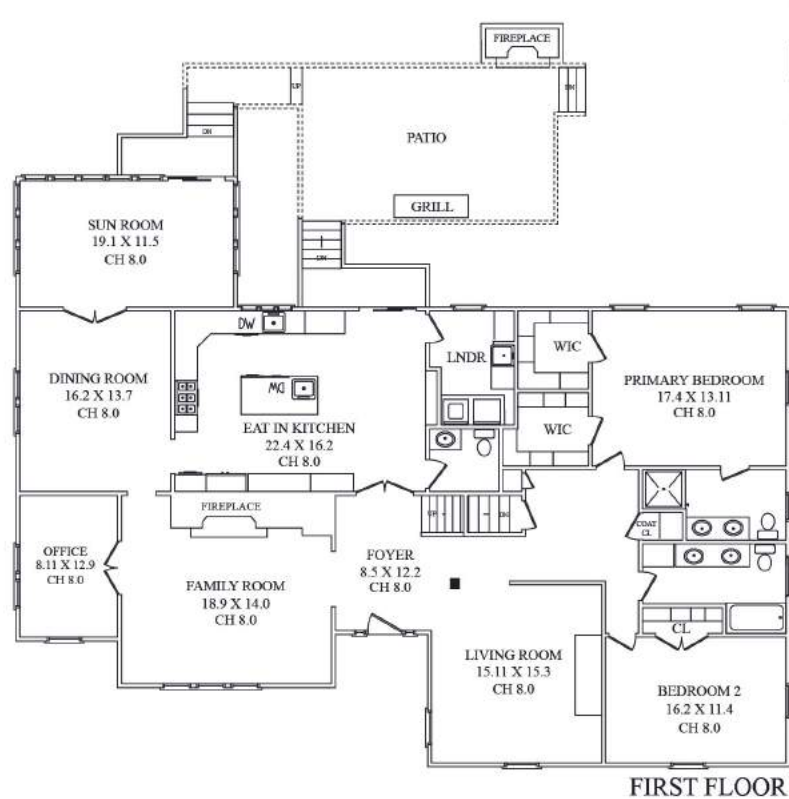
FRONT & BACK YARD

- Paver entry at driveway
- Meticulously landscaped with perennial plantings, grasses and foundations plantings
- Planting bed lining driveway
- Front brick steps and walkway
- Covered front entry with bluestone steps and landing, lantern
- Immense privacy in backyard with mature trees and 25 foot hedges
- Upper tier Paver Patio with Stone wood burning Fireplace, areas for dining and lounging
- Rear lower Paver Patio, Paver walkways
- “As is” shed
- Irrigation system

ADDITIONAL FEATURES & UPGRADES

- Driveway with basketball hoop
- Large attic that runs the length of house
- Water softener and water filtration system
- New water heater (2020)
- Newer furnace (2018)
- Heat/AC, 2 zones

THE FLOORPLAN



NOT TO SCALE - This floor plan is provided for illustration purposes only.
Room positions and dimensions are approximate and should be independently measured for accuracy



PRESENTED BY
sueadler 
THE #1 KELLER WILLIAMS TEAM IN NEW JERSEY

kW PREMIER
 PROPERTIES
 KELLERWILLIAMS.

Each Keller Williams office is individually owned and operated.



Melissa Bulwith
 Listing Specialist

Cell: 973.936.9129

Office: 973.376.0033 ext.101

E-mail: info@sueadler.com

sueadler.com/50Gloucester