

kw PREMIER
PROPERTIES
KELLER WILLIAMS

Each Keller Williams office is individually owned and operated.

PRESENTED BY
sueadler
THE #1 KELLER WILLIAMS TEAM IN NEW JERSEY **team**

9 Montrose Avenue
Summit, New Jersey



Welcome to 9 Montrose Avenue! This impressive 3 Bedroom, 2 Full and 1 Half Bath home is located in one of Summit's most sought after locations! A tight-knit neighborhood, great trick or treating, and fun block parties are just a few of the things the lucky new homeowner can look forward to. Sitting pretty on a MASSIVE piece of property close to Washington School, recreational pursuits at Tatlock Park, Midtown Direct Train and downtown Summit shopping/restaurants, this home checks each and every box.



Drive up the tree-lined street and take in the charming brick front walkway, professional plantings and classic covered front entry. Enter through the front door and into the warm and welcoming Living Room.

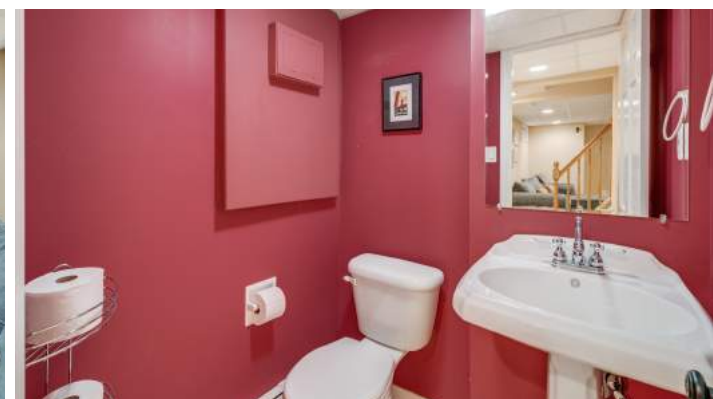
Gleaming hardwood floors, soothing hues and windows where the sunlight pours in make this room the perfect spot to entertain friends or cozy up with a book. Get ready to host family gatherings and dinner parties in the bright and airy Dining Room featuring hardwood floors, a gorgeous chandelier and windows at two exposures where the sunlight pours in.





Move into the well-appointed Kitchen where you are sure to be impressed. The Kitchen includes crisp white cabinetry, granite countertops, a subway tile backsplash and newer Whirlpool/Bosch appliances. Down the hall, don't miss spacious Bedroom 3 with hardwood floors and access to the idyllic backyard. A charming Full Bath, with attractive tile and fixtures, rounds out the First Level.





Two additional bedrooms are located on the spacious and bright Second Level. Take the staircase where you'll find the Primary Bedroom boasting natural light and its own Walk In Closet. Bedroom 2 includes a vaulted ceiling and double door Closet so that everything will be neatly tucked away. A lovely Full Hall Bath, with darling penny and subway tile, rounds out the Second Level.

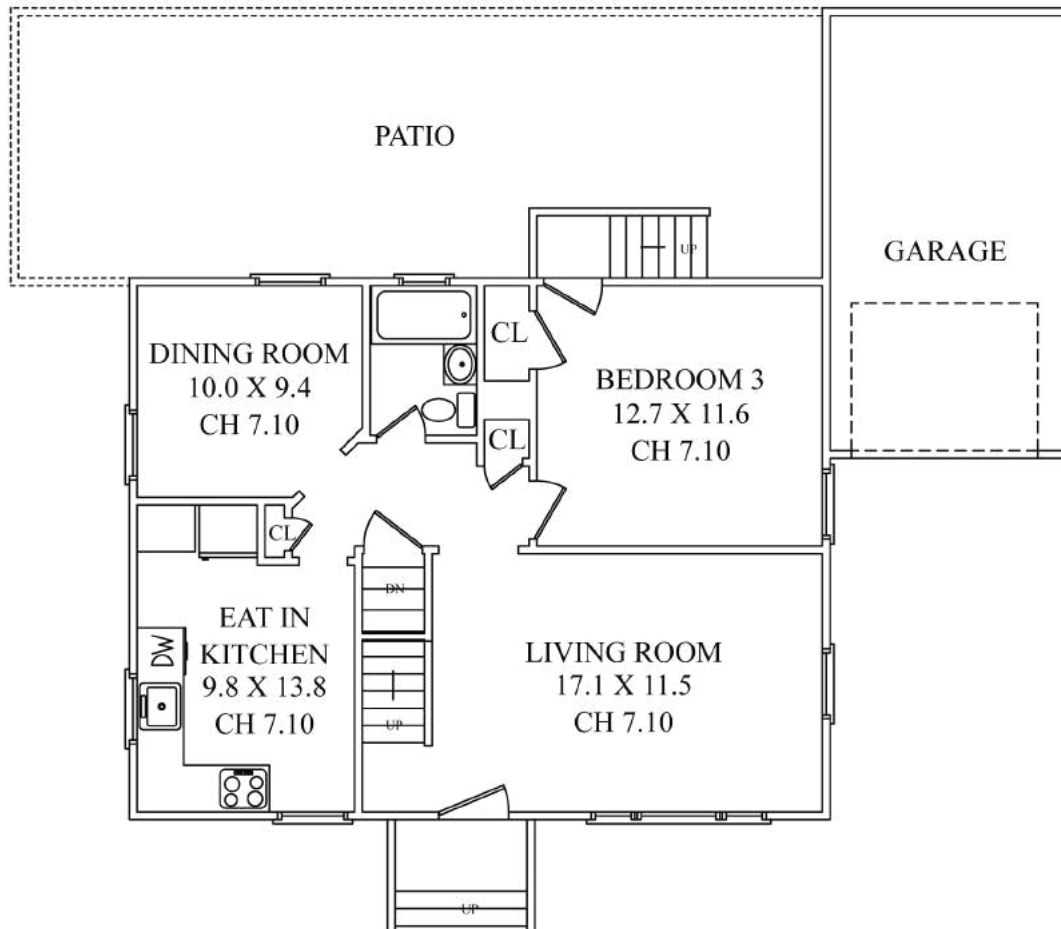
And that's not all! Get ready for movie night or play time in the large Lower Level Recreation Room with plenty of room to spread out. There is also room here for working out. Laundry is a pleasure in the spacious nearby Laundry Room with NEW LG front loading washer and dryer. A tasteful Half Bath rounds out the Lower Level.



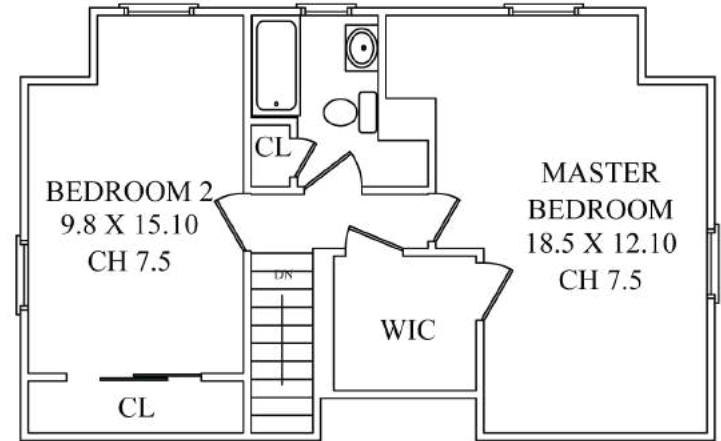
The biggest show stopper of 9 Montrose is the OUTSTANDING backyard that is sure to make you the envy of all your friends. The yard is fenced in, flat and INCREDIBLY deep. With such a large backyard, this is the kind of house you could add on to without compromising outdoor space whatsoever!

9 Montrose Avenue is an absolute charmer in one of New Jersey's most sought-after towns. With easy access to restaurants and shopping, proximity to Tatlock Park, Washington Elementary School and Midtown Direct Train, this home is a must see!

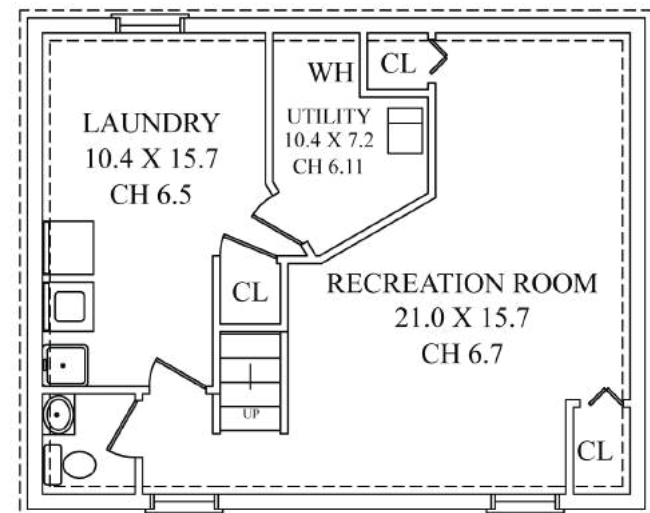
THE FLOORPLAN



FIRST FLOOR



SECOND FLOOR



LOWER LEVEL

NOT TO SCALE - This floor plan is provided for illustration purposes only.
Room positions and dimensions are approximate and should be independently measured for accuracy

- INSIDE & OUT -

FIRST LEVEL

- Living Room featuring hardwood floors, windows at 2 exposures (windows noted "as is") including a large picture window at front, recessed lighting, baseboard molding, crown molding, staircase to Second Level
- Bedroom 3 featuring hardwood floors, semi-flush light with drum shade, Closet, crown molding, baseboard molding, door to backyard
- Rear Hallway featuring hardwood floors, light with crystal detail, crown molding, baseboard molding, Coat Closet, Pantry Closet, French door to Lower Level
- Full Bath featuring decorative hexagonal floor tile, pedestal sink, medicine cabinet, tub/shower combination with subway tile surround, 3-light sconce, fan, crown molding, baseboard molding
- Dining Room featuring hardwood floors, chair rail, windows at 2 exposures, chandelier with drum shade, wine glass rack, baseboard molding, crown molding
- Chef's Kitchen featuring hardwood floors, chair rail, crisp white custom cabinetry, granite countertops, subway tile backsplash, windows at 2 exposures, recessed lighting, NEW Whirlpool stainless refrigerator/freezer, NEW Bosch stainless dishwasher, GE 4 burner oven/range, NEW Whirlpool built in microwave, Eat In Area
- 1 Car Garage with carriage style door

SECOND LEVEL

- Staircase with runner to Second Level
- Second Floor Landing featuring hardwood floors, flush mount light with crystal detail, access to Walk In Closet
- Bedroom 2 featuring hardwood floors, vaulted ceiling, Double Door Closet, crown molding, baseboard molding, windows at 2 exposures, semi-flush light with drum shade
- Full Hall Bath featuring penny floor tile, pedestal sink, tub/shower combination with subway tile surround, crown molding, baseboard molding, 4-light sconce, fan, Linen Closet
- Bedroom 1 (Primary Bedroom) featuring hardwood floors, vaulted ceiling, Walk In Closet, crown molding, baseboard molding, windows at 2 exposures, flush mount light with crystal detail

LOWER LEVEL

- Carpeted staircase to Lower Level
- Recreation Room featuring carpeting, drop ceiling with recessed lighting, baseboard molding, Closet
- Sump pump
- Laundry/Storage Room featuring tile flooring, drop ceiling with recessed lighting, utility sink, NEW LG front loader washer and dryer, Utility Closet, Closet, baseboard molding
- Half Bath featuring tile flooring, pedestal sink, baseboard molding, light/fan

FRONT YARD/BACKYARD

- Landscaped with privacy plantings on both sides of front lawn, blooming perennials
- Brick front walkway
- Covered front entry, bluestone steps/landing
- MASSIVE, deep fenced in backyard
- Wood staircase to back door
- Concrete patio

ADDITIONAL FEATURES/UPGRADES

- Insulation blown in ceiling and walls on Second Level
- Newer water heater
- Redone garage interior
- Ecobee thermostat on 2nd level



Listing Specialist
Jennifer Miller

Cell: 973.936.9129

Office: 973.376.0033 ext.101

E-mail: info@sueadler.com

sueadler.com/9Montrose