

**kw** PREMIER  
PROPERTIES  
KELLERWILLIAMS.

*Each Keller Williams office is individually owned and operated.*

PRESENTED BY

**sueadler**   
THE #1 KELLER WILLIAMS TEAM IN NEW JERSEY **team**

660 Ridgewood Avenue  
Montclair, New Jersey





*Welcome to 660 Ridgewood Avenue! NOT A THING needs to be done, just move right in to this exquisite 4 Bedroom, 3.1 Bath GUT RENOVATED home on a cul de sac in Montclair with beautiful Brookdale Park at your doorstep. Whether it's playing pickleball, tennis, strolling the walking path or enjoying a summer concert, it just doesn't get better than this location. This home boasts the perfect floorplan for entertaining and high-end, sleek finishes throughout. Close to Montclair schools, Watchung Plaza, Midtown Direct Train, Glen Ridge Country Club and all Brookdale Park has to offer, this home checks each and every box.*





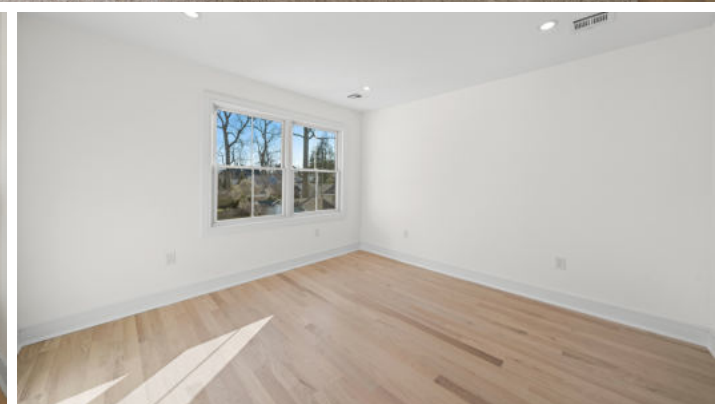
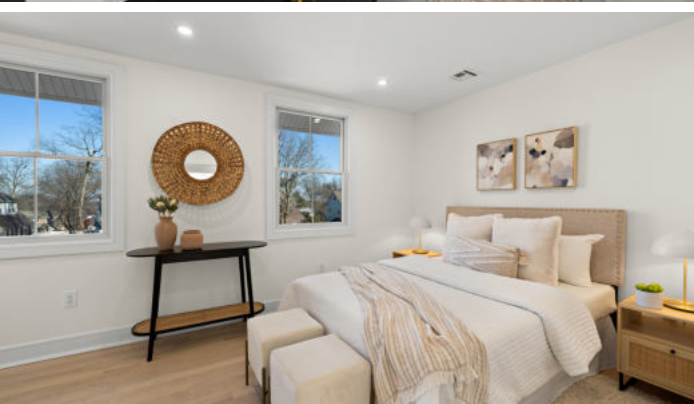
*When you arrive, admire modern farmhouse style executed to perfection as you take in the crisp, white exterior with cool black accent windows. Take the curved stone walkway to the gracious covered landing and you instantly know you have arrived somewhere special. Enter through the farmhouse style door and take in the gorgeous herringbone hardwood floors and exquisite moldings and millwork. Prepare to be impressed by the open and airy Living Room with a dazzling fireplace and windows where the sunlight radiates in. Working from home is an absolute pleasure in the magnificent Home Office/Den sure to be an incredible Zoom backdrop.*





*Dinner parties are divine in the elegant Dining Room featuring a dazzling modern light fixture, wainscoting, a custom built in and easy access to the outstanding Gourmet Chef's Kitchen. This Kitchen is sure to be the envy of your friends with crisp white custom wood cabinetry, a spacious gray custom island with seating for 4, quartz countertops/backsplash and Bosch stainless steel appliances. Storage abounds with extensive upper and lower cabinetry, including some hidden cabinetry around the corner. The Kitchen opens to the astounding Family Room with its custom Dry Bar with a fluted wood accent wall and gorgeous windows with idyllic views of the outdoors. And it doesn't end there. Don't miss the convenient Mud Room with its own closet, built in storage and private entrance. A chic Powder Room rounds out the First Level.*





*When it's time to retire for the evening, the stately staircase winds around to lead you to the second floor with 4 spacious bedrooms. Luxury abounds in the private and open Primary Bedroom Suite with a dramatic vaulted ceiling, 2 fully custom Closets (1 Walk In) and a spa-like Bath with a thick double quartz-topped vanity, huge frameless glass door shower and a serene soaking tub. Three additional roomy bedrooms (1 is ensuite, the others share a Hall Bath) are steeped in sunlight with generous custom closets. All the baths impress with sleek vanities, chic fixtures and brilliant tile selections. A conveniently located Laundry Room, with a cool barn door, rounds out this level.*





*And there's more! The Lower Level will provide endless hours of entertainment with a spacious Recreation/Play Room so that there is plenty of room for tv watching, hanging out and arts and crafts projects.*

*An additional spacious Walk In Storage Room will ensure that all clutter is neatly tucked away.*

*This home raises the bar for incredible style and is a special opportunity to own a modern farmhouse stunner ideally located in one of Montclair's most sought after locations. Simply put, 660 Ridgewood Avenue is the perfect place to call home!*



# - INSIDE & OUT -

## FIRST LEVEL

- Entry Foyer featuring hardwood floors in herringbone pattern, elegant, raised moldings, farmhouse style front door, windows at 2 exposures, recessed lighting, baseboard molding, staircase to Second Level
- Living Room featuring 2 oversized windows, hardwood floors, working fireplace with custom millwork mantle and quartz surround, wired above for TV, recessed lighting, baseboard molding, crown molding
- Office/Den featuring double French doors at entry, hardwood floors, oversized windows at 2 exposures, recessed lighting, baseboard molding
- Dining Room featuring hardwood floors, wainscoting, custom built in with open and concealed storage, oversized window, open to Kitchen, staggered glass globe brushed gold light fixture, crown molding
- Gourmet Chef's Kitchen featuring hardwood floors, crisp white exterior custom cabinetry, sleek gray island with seating for 4, quartz countertops and backsplash, brushed gold hardware, matte black and brushed gold faucet, recessed lighting, crown molding, hidden storage, Sharp stainless microwave drawer, Bosch 6 burner oven/range, Bosch stainless dishwasher, Bosch stainless refrigerator/freezer
- Family Room featuring hardwood floors, Dry Bar with custom cabinetry, quartz countertop (with hidden power source), fluted wood accent wall, recessed lighting, crown molding, baseboard molding, 3 oversized windows
- Mud Room featuring designer floor tile, custom built in storage, Closet, door to driveway, recessed lighting, baseboard molding, crown molding
- Powder Room featuring hexagonal floor tile, modern geometric wall tile, floating stone sink with brushed gold fixtures, light fixture, window, Kohler toilet, baseboard molding

## SECOND LEVEL

- Staircase to Second Level featuring window, elegant, raised moldings, baseboard molding
- Second Level Landing featuring hardwood floors, Linen Closet, recessed lighting, drop down attic access
- Laundry Room featuring barn door at entry, designer floor tile, recessed lighting, baseboard molding (new owner to supply W/D)
- Primary Bedroom Suite featuring hardwood floors, vaulted 10' ceiling, hardwood floors, oversized windows at 2 exposures, recessed lighting, 2 Closets (1 Walk In) with custom closet systems, baseboard molding, matte black hardware, Primary Full Bath featuring marble look floor and wall tile with radiant heat, modern oak double vanity with thick quartz countertop, 2 tilt mirrors, soaking tub, matte black fixtures, frameless glass door shower with designer tile surround, separate room for toilet, Kohler toilet, windows at 2 exposures, baseboard molding, recessed lighting, two 3-light sconces, dock/charging stations

## SECOND LEVEL CONTINUED...

- Full Hall Bath featuring marble look hexagonal floor tile, vanity with marble countertop, tub/shower combination with hexagonal tile surround, window, recessed lighting, 3 light sconce, Kohler toilet, tilt mirror
- Ensuite Bedroom 2 featuring hardwood floors, recessed lighting, 2 oversized windows, Double Door Closet with custom closet system, baseboard molding, matte black hardware, Full Bath featuring designer marble floor tile, sleek modern vanity with quartz countertop, brushed gold fixtures, shower with penny tile floor and elongated subway tile surround, recessed lighting, window, tilt mirror with brushed gold trim, 1 piece Woodbridge toilet, recessed lighting, 3-light sconce
- Bedroom 3 featuring hardwood floors, vaulted 10' ceiling, recessed lighting, 2 oversized windows, Double Door Closet with custom closet system, baseboard molding, matte black hardware
- Bedroom 4 featuring hardwood floors, recessed lighting, 2 oversized windows, Closet with custom closet system, baseboard molding, matte black hardware

## LOWER LEVEL

- Recreation Room featuring carpeting, under stair Closet, lighting
- Storage Room

## FRONT YARD / BACKYARD

- Stone staircase and pathway to front door
- Covered front entry with maintenance free decking/stairs, lantern, beadboard, arched ceiling, black railings
- Flat, partially fenced in yard with privacy trees, new sod
- Side entry, with limestone steps, off driveway
- Detached fully renovated 2 Car Garage

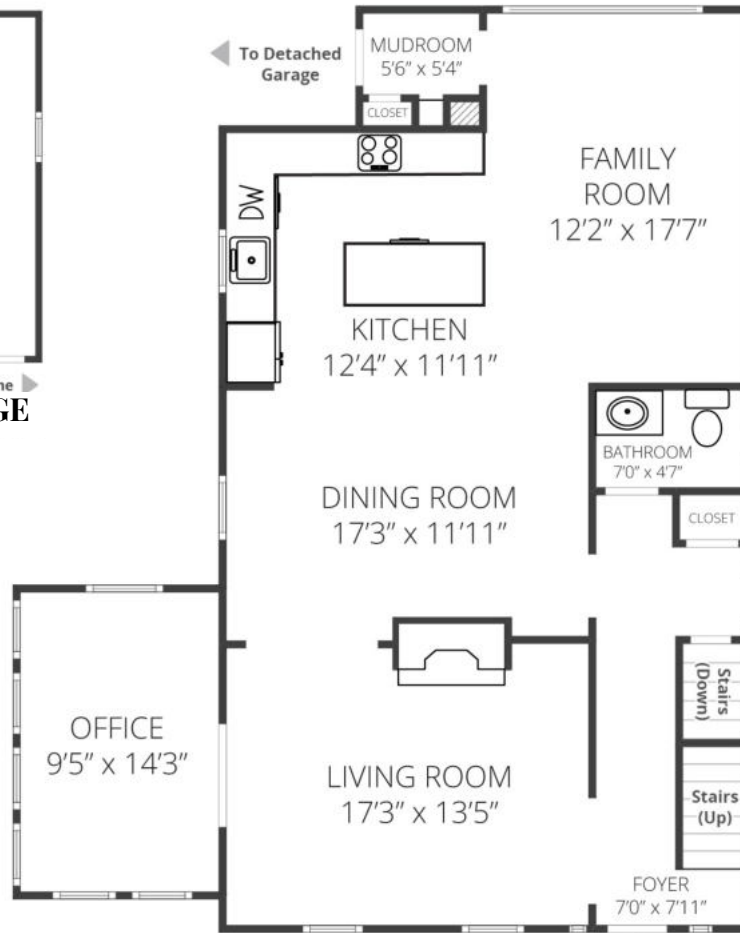
## ADDITIONAL FEATURES / UPGRADES

- Approx 2700 square feet
- SOD for the front and Backyard will be laid and completed in April
- New Asphalt driveway
- Full gut renovation, all new systems/wiring/plumbing throughout
- Andersen windows throughout, exterior on-trend black trim
- Painted neutral hues throughout
- Ring cameras and lights

# THE FLOORPLAN



**DETACHED GARAGE**

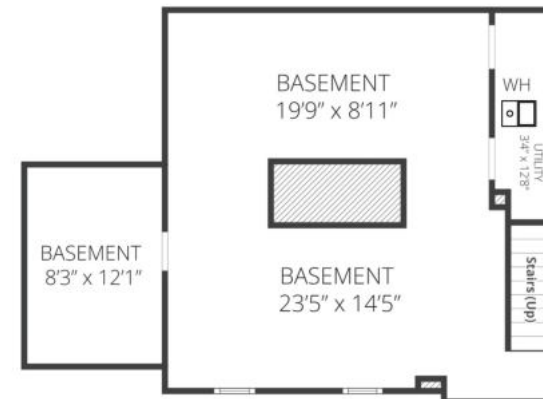


**FIRST LEVEL**

Entry



**SECOND LEVEL**



**LOWER LEVEL**

PRESENTED BY  
**sueadler** team  
THE #1 KELLER WILLIAMS TEAM IN NEW JERSEY

**kW** PREMIER  
PROPERTIES  
KELLER WILLIAMS.

Each Keller Williams office is individually owned and operated.



**Vikas Poddar**  
Listing Specialist

Cell: 973.936.9129

Office: 973.376.0033 ext.101

E-mail: [info@sueadler.com](mailto:info@sueadler.com)

[sueadler.com/660Ridgewood](http://sueadler.com/660Ridgewood)