

kw PREMIER
PROPERTIES
KELLERWILLIAMS
*Each Keller Williams office is
individually owned and operated.*

PRESENTED BY
sueadler 
THE KELLER WILLIAMS TEAM IN NEW JERSEY **Team**

307 Summit Avenue
Summit, New Jersey



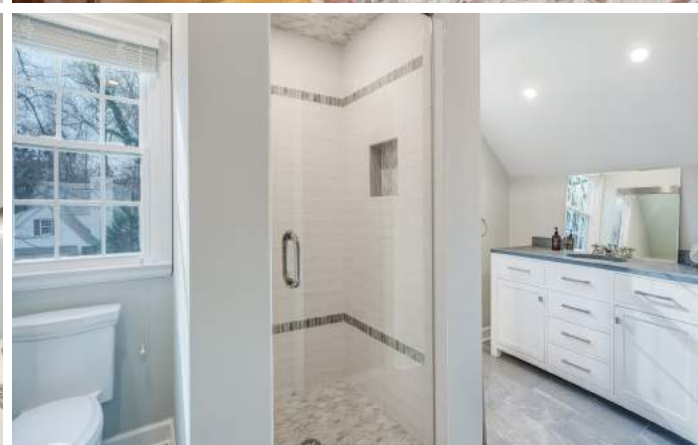
Welcome to 307 Summit Avenue located in Summit's prestigious Northside! This stunning center hall colonial absolutely captivates with an open and airy vibe, beautiful renovations, and timeless style. Enjoy all this home has to offer close to cherished Mallard Pond, blue ribbon schools, Midtown Direct train, excellent restaurants, shopping, and all Summit has to offer.



Stroll up to 307 Summit Avenue and admire the spacious corner lot teeming with crisp professional landscaping. A stone and clapboard exterior, a covered front entry, and a cheery red door all lend to the home's curb appeal. Enter into the elegant Entry Foyer which leads to the sundrenched Living Room featuring a stately gas fireplace and windows at two exposures so the sunlight pours in. Working from home is a dream in the spectacular Office that delivers at every turn. Wall-to-wall original built-ins, wainscoting, and regal raised moldings will make you relish working from home. Dinner parties are divine in the large Formal Dining Room with its gracious bay window with natural views.



Flow easily from the Dining Room into the out-of-this-world Gourmet Chef's Kitchen that will satisfy every chef's desire. Custom cabinetry, quartz countertops, and high-end stainless steel appliances are the best in form and function. Prepare to be amazed by the magnificent Sun Room/Mud Room that is much more than a spot to store backpacks. This impressive room, with its vaulted ceiling and bathed in sunlight, is the perfect spot to curl up with a novel or just take in the outdoor views. Easily accessed from the Kitchen and Mud Room, enjoy complete privacy in the meticulously landscaped flat yard featuring premium plantings and blooming perennials. A Bluestone Patio delivers serious Secret Garden vibes flanked by plantings and decorative garden trellises. Back inside, a sunny Bedroom, a beautiful Full Bath, and a 2 Car Garage round out the First Level.



Ready to retire for the evening? Take the staircase to the Second Floor Landing which leads to exceptional rooms everywhere you turn. Luxury abounds in the spacious and private Primary Bedroom Suite with a Sitting Area, 2 Closets, a Walk In Closet, and a stunning, spa-like Bath with a sleek double vanity, frameless glass door shower, and an enormous double-sized Linen Closet. Bedrooms 2 and 3 are steeped in sunlight and include plenty of closet space and room to relax. The bedrooms share a magnificently designed Jack and Jill Bath.



And that's not all! Don't miss the expansive, finished Lower Level with a large Recreation Room, chic Exercise Room, Laundry Room, and plenty of additional storage space. There is even room to build a Wine Cellar should you desire.

This truly is an amazing opportunity to own a classic Summit home with all the modern amenities you desire. With fabulous schools, NYC transportation, and Summit's excellent shopping and restaurants, 307 Summit Avenue checks every box!



- INSIDE & OUT -

FIRST LEVEL

- Entry Foyer featuring original cheery red door with sidelites, hardwood floors, modern light fixture with drum shade, crown molding, baseboard molding, staircase with designer runner to Second Level
- Rear Hallway featuring hardwood floors, modern light fixture with drum shade, Coat Closet, crown molding, baseboard molding
- Living Room featuring hardwood floors, windows at 2 exposures, fireplace with custom millwork mantle and stone surround, gas insert (New 2018), crown molding, baseboard molding
- Dining Room featuring hardwood floors, bay window with ledge, chair rail, chandelier, 2 sconces, crown molding, baseboard molding
- Gourmet Chef's Kitchen featuring checkboard marble floor tile, custom cabinetry including glass door cabinetry, quartz countertops (New 2021), subway tile backsplash, decorative backsplash behind oven/range, Jenn-Air stainless refrigerator/freezer, Wolf 6 burner oven/range, Miele stainless dishwasher, Shaws farm sink with upscale fixture, microwave nook with GE Profile stainless microwave, stainless hood, door to Bluestone Landing Area, recessed lighting, crown molding, open wine storage
- Office/Library (potential Bedroom 5) featuring hardwood floors, windows at 2 exposures, original wall to wall built in with open and concealed storage, wainscoting, raised moldings, crown molding, Closet
- Mud Room/Sun Room (added 2018) featuring vaulted ceiling, wood look flooring, single lite French door flanked by floor to ceiling windows out to Bluestone Landing Area, floor to ceiling windows at opposite end, door to Garage, recessed lighting, ceiling fan/light
- 2 Car Garage with electric doors, built in storage
- Full Hall Bath featuring tile flooring, vanity with stone countertop, sconce over vanity, flush mount light, fan, window, tub/shower combination with sliding glass door and designer tile surround, baseboard molding, Linen Closet, medicine cabinet
- Bedroom 4 featuring hardwood floors, windows at 2 exposures, chair rail, Closet, baseboard molding

SECOND LEVEL

- Staircase with designer runner to Second Level
- Second Floor Landing featuring hardwood floors, modern light fixture with drum shade, baseboard molding
- Primary Bedroom Suite featuring hardwood floors, vaulted ceiling, eave storage, 2 Closets with built in storage, Walk In Closet with built in storage, Sitting Area, baseboard molding, door to Bath
- Primary Bath featuring tile flooring, Double Door Linen Closet, double vanity with marble countertop, frameless glass door shower with designer tile surround, recessed lighting, 3 sconces, fan, window, crown molding, baseboard molding, door to Second Floor Landing
- Bedroom 2 featuring hardwood floors, window, flush mount light, door to Jack and Jill Bath, baseboard molding, Closet
- Jack and Jill Bath (added 2018) featuring tile flooring, vaulted ceiling, 2 windows, vanity with granite countertop, glass door shower with designer tile surround, recessed lighting, fan
- Bedroom 3 featuring vaulted ceiling, hardwood floors, window, flush mount light, door to Jack and Jill Bath, baseboard molding, Closet

LOWER LEVEL

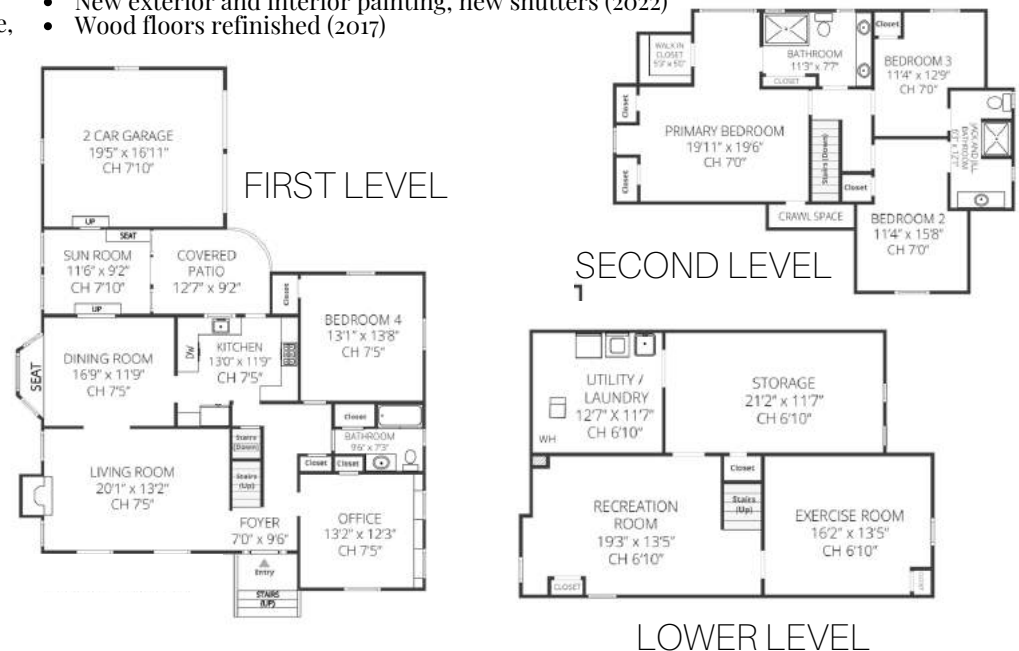
- Lower level renovated 2018
- Carpeted staircase to Lower Level
- Recreation Room featuring carpeting, unfinished painted ceiling with recessed lighting, baseboard molding, utility closet
- Exercise Room featuring wood look flooring, custom cut mirrors, baseboard molding, utility closet, unfinished painted ceiling with recessed lighting
- Storage Room featuring wood look flooring, unfinished ceiling with recessed lighting, utility closet, under stairway closet
- Laundry/Storage Room featuring wood look flooring, utility sink, LG front loader washer and dryer, unfinished ceiling with recessed lighting, open shelving, baseboard molding

FRONT YARD / BACKYARD

- Spacious corner lot with extensive landscaping including grading and leveling yard, new drainage
- New beds with professional landscaping, foundation plantings and blooming perennials
- Bluestone front walkway
- Bluestone front steps with brick risers
- Covered front entry
- Bluestone Landing Area outside Kitchen and Mud Room
- Bluestone Patio
- Bluestone stepping stones at side
- Decorative garden arbors and trellises
- Underground electric dog fence (2018)

ADDITIONAL FEATURES / UPGRADES

- Full house Generac generator (2018)
- Newer hot water heater (2017)
- New main water shut off valve (2022)
- Driveway resealed (2022)
- Gutters redone (2022)
- New exterior and interior painting, new shutters (2022)
- Wood floors refinished (2017)





sueadler 
THE #1 KELLER WILLIAMS TEAM IN NEW JERSEY **team**

Cell: 973.936.9129
Office: 973.376.0033 ext.101
E-mail: info@sueadler.com
sueadler.com/307Summit

kw PREMIER
PROPERTIES
KELLERWILLIAMS.