

**kw** PREMIER  
PROPERTIES  
KELLERWILLIAMS.

*Each Keller Williams office is individually owned and operated.*

PRESENTED BY

**sueadler**   
THE #1 KELLER WILLIAMS TEAM IN NEW JERSEY **team**

37 Plain Street  
Summit, New Jersey



*Welcome to 37 Plain Street! This is NOT your ordinary Summit colonial. There are so many bright and airy spaces and INCREDIBLE designer touches, this is the kind of home where you'll never want to go out! Be the next lucky owner of this 4 Bedroom, 3.5 Bath close to fabulous Summit schools, recreational pursuits at Tatlock Park, Route 24, restaurants/shopping/antiquing, Midtown Direct Train and all downtown Summit has to offer. As you arrive, take in this charming home situated beautifully on a quiet block. This home is open and airy and includes the kind of renovations/designer touches worthy of a magazine. Enter through the front door and into the warm and welcoming Entry Foyer with a beautiful staircase leading to the Second Level. Down the hall, an exquisite Powder Room dazzles with a chic vanity and dashing designer wallpaper. Dinner parties are absolutely divine in the sundrenched Dining Room with plenty of room to host the holidays and gatherings.*



*Move easily into the fabulous Gourmet Chef's Kitchen (renovation just completed December 2022!!!) that is the real star of this home. Crisp white exterior cabinets, the COOLEST large island with seating for four, quartz countertops and absolutely stunning hexagonal tile set this kitchen head and shoulders above the rest. Sleek lighting, a darling window seat and the BEST Bar Area only add to this room's allure. Flow easily into the sunny and bright Family Room boasting a warm and welcoming fireplace, plantation shutters and sliders leading to the spectacular backyard. The fenced-in backyard is your own serene oasis with a large Patio overlooking a plethora of blooming perennials. A 1 Car Garage rounds out the First Level.*





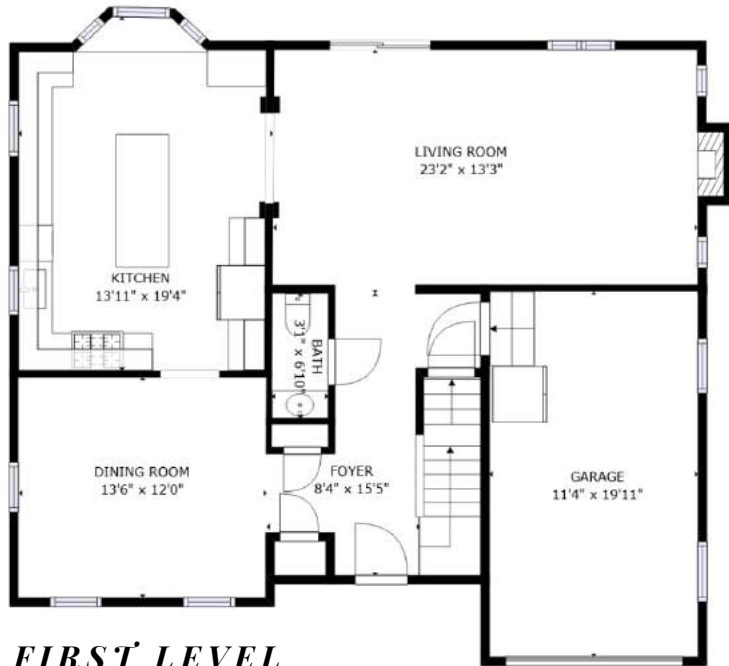
*Ready to retire for the evening? Flow up the gorgeous staircase and take in the vaulted ceiling and four incredible bedrooms. The Primary Bedroom Suite dazzles with two Closets (1 Walk In), a pretty vaulted ceiling and a spa-like Bath with two individual custom vanities, a soaking tub and separate commode. Bedrooms 2 through 4 are sundrenched and include plenty of closet space. A Hallway Full Bath includes a massive double vanity, shower and bath tub. Finally, laundry is a pleasure when it's located on the Second Level!*



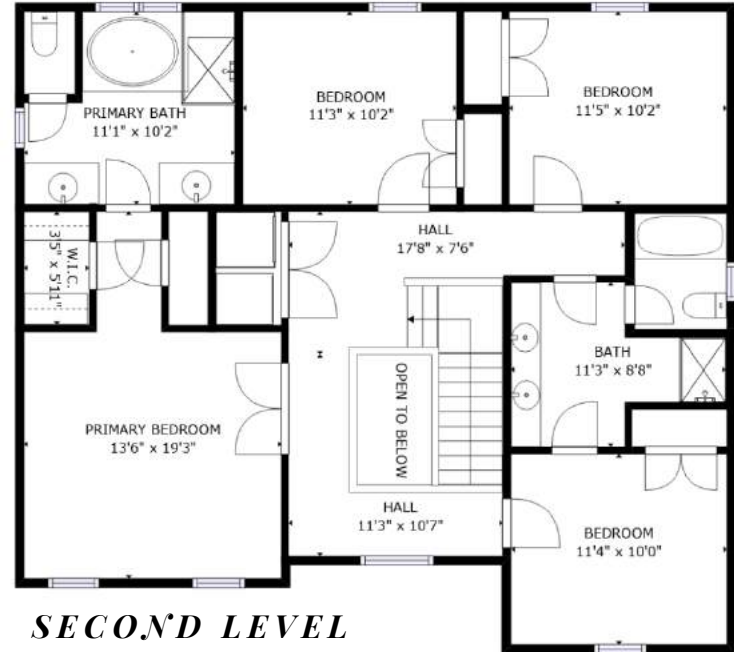
*And that's not all! There is a large Lower Level adding incredible style and functional space to the home. Working from home is a dream in the serene Home Office. A spacious Recreation Room includes a NEW sleek custom built in and plenty of room for play, gaming and tv watching. Tons of storage and a Full Bath, boasting pretty farmhouse style tile, rounds out the Lower Level.*

*37 Plain Street is the perfect home in one of New Jersey's most sought-after towns. With easy access to Tatlock Park, Summit schools, Midtown Direct Train and Summit's outstanding restaurants and shops, this home will not last!*

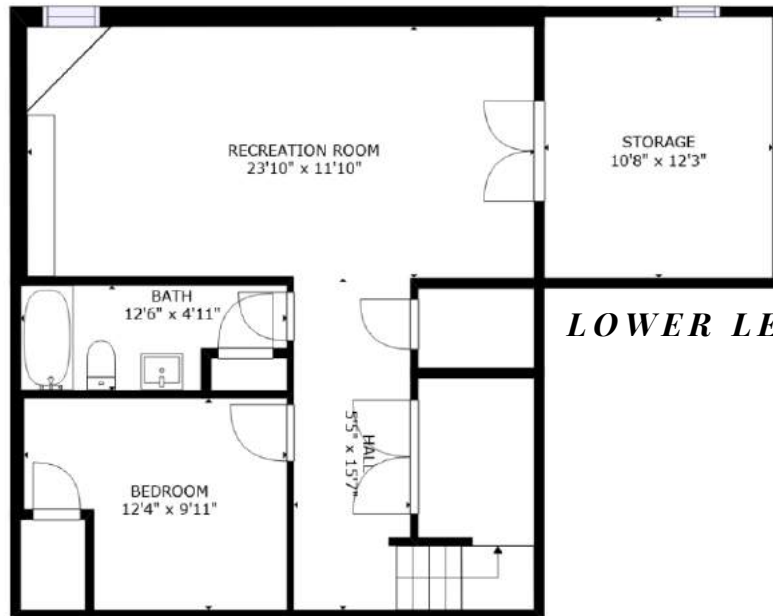
# THE FLOORPLAN



*FIRST LEVEL*



*SECOND LEVEL*



*LOWER LEVEL*

# - INSIDE & OUT -

## **FIRST LEVEL**

- Entry Foyer featuring hardwood floors, Coat Closet, 2nd Closet with custom storage, staircase to Second Level, wainscoting, recessed light, crown molding, baseboard molding, chandelier, door to Lower Level
- Powder Room featuring hardwood floors, designer wallpaper, vanity with quartz countertop, sconce, baseboard molding
- Dining Room featuring hardwood floors with inlay, flush mount light with decorative drum shade, windows at 2 exposures, crown molding, baseboard molding
- Renovated Gourmet Chef's Kitchen (completed 2022) featuring hardwood floor, custom shaker style cabinetry, oversized island with seating for 4, quartz countertops, designer hexagonal tile backsplash, brushed gold hardware, 3 pendant lights with glass globes, recessed lighting, bay window with built in window seat, windows with custom roller shades, Dry Bar featuring designer tile backsplash, built in cabinetry and beverage refrigerator, floating gold shelves, Whirlpool stainless refrigerator/freezer with water/ice dispenser, Kitchen Aid stainless 5 burner oven/range, built in microwave, Whirlpool stainless dishwasher, stainless sink
- Family Room featuring hardwood floors, gas fireplace with stone surround and custom millwork mantle, recessed lighting, sliding glass door to backyard, crown molding, baseboard molding, plantation shutters
- 1 car garage with storage

## **SECOND LEVEL**

- Second Level Landing featuring hardwood floors, vaulted ceiling, chandelier, sconces
- Laundry Closet featuring Samsung washer and dryer, wire shelf
- Primary Bedroom featuring double doors at entry, hardwood floors, vaulted ceiling, chandelier with drum shade, baseboard molding, windows at 2 exposures, Walk In Closet, 2nd Closet, Bath featuring tile flooring, 2 vanities with stone countertop, glass door shower, built in soaking tub, windows with plantation shutters, separate commode, recessed lighting, sconces
- Bedroom 2 featuring carpeting, window, double sized Closet, flush mount light, baseboard molding
- Bedroom 3 featuring carpeting, window, double sized Closet, flush mount light, baseboard molding, accent painted wall
- Full Hall Bath featuring tile flooring, wall to wall custom vanity with stone countertop, sconces, shower, separate room for tub and commode, baseboard molding, door to Bedroom 4
- Bedroom 4 featuring carpeting, window, double sized Closet, flush mount light, baseboard molding

## **LOWER LEVEL**

- Carpeted staircase to Lower
- Lower Level Landing featuring Storage Closets, carpeting, recessed lighting
- Walk In Closet
- Double Door Closet
- Office featuring carpeting, recessed lighting, baseboard molding, Closet
- Recreation Room featuring carpeting, custom built in with open and concealed storage, corner built in with access to sump pump, recessed lighting, baseboard molding
- Full Bath featuring tile flooring, pedestal sink, tub/shower combination with glass divider, flush mount light, sconce, farmhouse style tile, Linen Closet
- Utility/Storage Room

## **ADDITIONAL FEATURES / UPGRADES**

- Home built 2011

## **FRONT / BACK YARD**

- Paver front and side walkway
- Covered front entry, bluestone flooring
- Flat, fenced in yard with blooming perennials, privacy trees
- Additional side area for play
- Paver Patio with room for dining and conversation area



**kww** PREMIER  
PROPERTIES  
KELLERWILLIAMS.

*Each Keller Williams office is individually owned and operated.*



**Jennifer Miller**  
Listing Specialist

Cell: 973.936.9129  
Office: 973.376.0033 ext.101  
E-mail: [info@sueadler.com](mailto:info@sueadler.com)  
**[sueadler.com/37Plain](http://sueadler.com/37Plain)**