

PRESENTED BY
sueadler 
THE #1 REAL ESTATE TEAM IN NEW JERSEY **team**

kw PREMIER
PROPERTIES
KELLERWILLIAMS
Equity Plus. Williams Capital.
individually owned and operated.



20 Beekman Terrace
Summit, New Jersey



Drive up to 20 Beekman Terrace and it's as if you have been transported to the English countryside. This charming 4 Bedroom, 2 Full and 2 Half Bath Tudor, in the heart of Summit, is reminiscent of a storybook cottage complete with beautiful gardens and exquisite craftsmanship. Enjoy this home's stunning hallmarks including original artisan plaster walls, arched entryways, high ceilings and a light-filled open floor plan not ordinarily found in a Tudor-style home.



Curb appeal abounds with a stunning façade dominated by decorative timbering and gables, the prettiest perennial gardens and diamond patterned windows. A Tudor Style Door leads you into the Entry Foyer complete with pretty plaster walls, a Coat Closet and access to the tasteful Powder Room. An open and airy Living Room features oversized picture windows (some with diamond pattern), a beautiful fireplace and plenty of room to entertain. An arched entry opens to an elegant Sitting Room with serene garden views inviting you to sit and chat over coffee or curl up with a book. Working from home is a breeze in the tranquil Office/Sun Room with windows at three exposures to idyllic garden views and pocket doors for privacy.





A second arched entry from the Living Room opens to a spacious Dining Room with an exquisite, brushed gold chandelier and leafy garden views. Be impressed by the Chef's Kitchen, directly off the Dining Room, with crisp white custom wood cabinetry, a breakfast bar, granite countertops, stainless steel appliances and plenty of prep space. A French door off the Kitchen leads to the rear Mud Room Area.



When it's time to retire for the evening, a stately staircase leads you to the sundrenched second floor. This floor includes three generously proportioned Bedrooms with custom Walk-In Closets and tall casement windows. Bedroom 1 features built in bookcases and a charming Study nook. A bright and sunny Full Bathroom, complete with vibrant blue and white tile, rounds out this level. Take the staircase up to the Third Level where you can retreat to the spacious Primary Bedroom Suite with large casement windows, a tasteful Full Bath and custom closets.

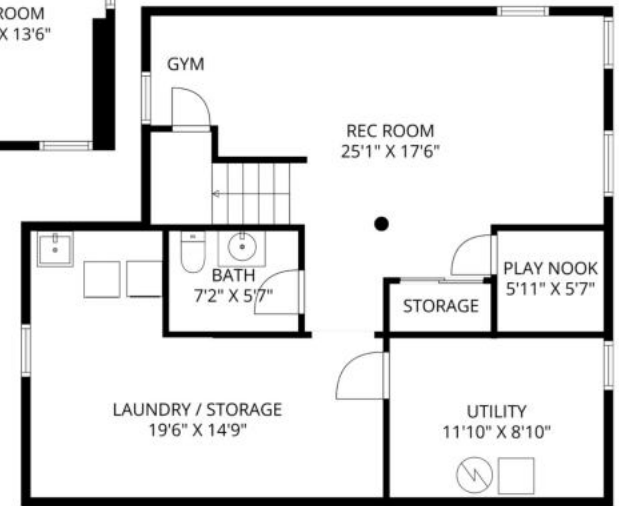
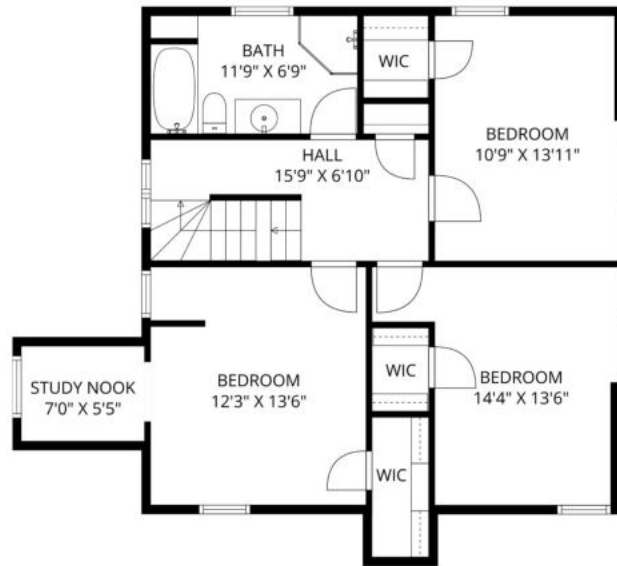
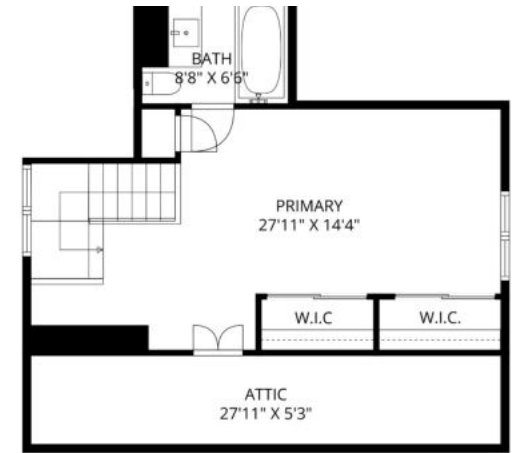
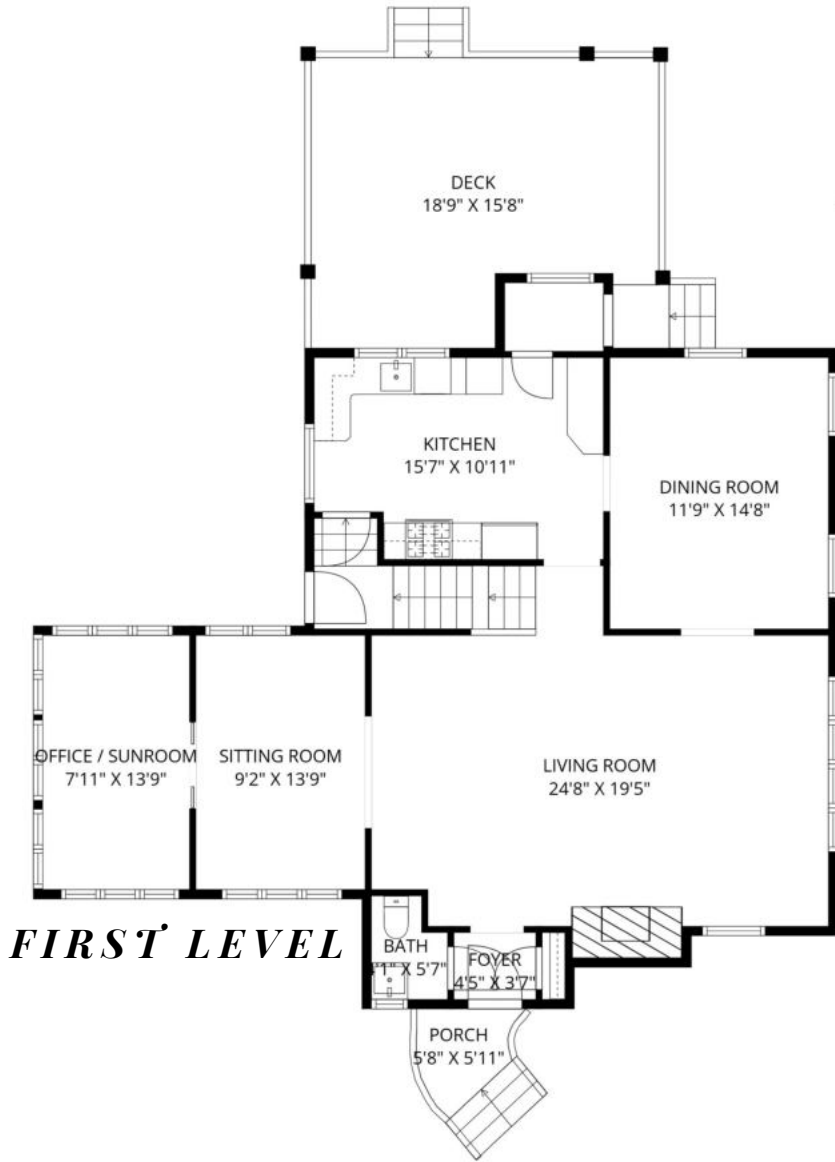


And that's not all! The Lower Level includes a spacious Recreation Room with a cozy TV Lounge area and Gym zone. There is also a charming Play Nook with a fun half door. A well-appointed Half Bath, separate Laundry and tons of storage round out the Lower Level.

Step outside and be wowed by the stunning tree-lined backyard and the recently redone Deck offering tons of entertaining space and a pergola to provide some shade and frame the views. Across the lawn, a bluestone patio nestles in lush blooming perennials making this space extraordinary. This tranquil and breezy backyard exudes relaxation and is perfect for an al fresco dinner party, sipping cocktails with friends or simply lounging with the family.

This is a special opportunity to own a charming Summit Tudor situated amongst some of Summit's most prestigious homes. Close to parks/recreation, top notch schools, Route 24, Midtown Direct Train and all that downtown Summit has to offer, be the lucky new owner of this incredible home.

THE FLOORPLAN



NOT TO SCALE - This floor plan is provided for illustration purposes only.
Room positions and dimensions are approximate and should be independently measured for accuracy

- INSIDE & OUT -

FIRST LEVEL

- Entry Foyer featuring hardwood floors, lantern, Coat Closet, plaster walls
- Powder Room featuring tile flooring, corner wall mount sink, window, recessed light, sconce, baseboard molding
- Living Room featuring hardwood floors, rare chestnut wood baseboard molding, original fireplace with brick surround, chestnut wood mantle and tile hearth, oversized windows at 2 exposures including window with diamond pattern, decorative plaster walls, baseboard molding, sconces, staircase to Second Level
- Sitting Room featuring arched entry, hardwood floors, windows at front and back including window with diamond pattern, ceiling fan/light, baseboard molding, plaster walls
- Office/Sun Room featuring pocket doors at entry, hardwood floors, panoramic windows at 3 exposures, track lighting, baseboard molding
- Dining Room featuring arched entry, hardwood floors, windows at 2 exposures, designer brushed gold chandelier, decorative plaster walls, crown molding, baseboard molding
- Gourmet Chef's Kitchen featuring tile flooring, crisp white custom cabinetry (professionally painted 2023), granite countertops, tile backsplash, recessed lighting, Breakfast Bar, KitchenAid wall oven, KitchenAid built in microwave, Whirlpool refrigerator/freezer, stainless cooktop, stainless hood, NEWER Bosch dishwasher (2020), NEWER Insinkerator (2020), French door to Lower Level, French door to Mud Room
- Rear Entry/Mud Room featuring tile flooring, hook storage, sash window, flush mount light

SECOND LEVEL

- Winding staircase with NEWER runner (2019) to Second Level
- Second Level Hall and Landing featuring carpeting, plaster walls, flush mount light, Linen Closet
- Bedroom 1 featuring hardwood floors, custom built in shelves with warm wood top, Walk-In Closet with custom storage, Desk/Study Nook, recessed lighting, windows at 2 exposures including window with diamond pattern, baseboard molding
- Bedroom 2 featuring hardwood floors, Walk-In Closet with custom storage, flush mount light, windows at 2 exposures including window with diamond pattern, baseboard molding
- Bedroom 3 featuring hardwood floors, Walk-In Closet with custom storage, flush mount light, windows at 2 exposures, baseboard molding
- Full Hall Bath featuring blue floor tile, vanity with integrated sink/top, sconce, glass panel corner shower, plus tub/shower combination with tile surround, recessed lighting, fan

THIRD LEVEL

- Staircase with runner to Third Level
- Primary Bedroom Suite featuring hardwood floors (installed 2019), vaulted ceiling, 2 deep Double Door Closets with custom storage, windows at front and back, built in bookshelves, Linen Closet, Bath with jacuzzi jets featuring wood look flooring, vanity with marble countertop, tub/shower combination, window, sconce, recessed lighting, fan

LOWER LEVEL

- Landing with side door to rear garden
- Recreation Room featuring NEW wood look flooring (2022), track lighting, areas for TV lounge and Gym, Double Storage Closet
- Play Nook with half door
- Half Bath featuring wood look flooring, vanity, baseboard molding, sconce
- Utility Room
- Storage Room
- Freshly painted 2022
- Laundry with NEWER Samsung washer and dryer (2020)

FRONT YARD / BACKYARD

- Driveway with paver entry, paver area by 2 Car Garage
- Beautiful, layered perennial cottage-style gardens
- Bluestone front walkway
- Covered front entry
- Stately front door with leadlight window
- Stepping stones/side walkway
- Expansive Deck with NEW Decking (2023) with Newer Pergola (2020)
- Fenced in flat yard bordered by privacy plantings, extensive blooming perennials
- NEW picket fence (2023)
- Detached 2 car garage
- Bluestone Patio (replaced 2022)

ADDITIONAL FEATURES / UPGRADES

- NEW water heater (2023)
- NEW water meter (2023)
- Extended outdoor drainage and indoor French drain
- NEWER AC (2021)
- Installed gates, fence in backyard and electric dog fence around property (2020)
- Many custom shades throughout
- Freshly painted interior
- Floorboards sanded and stained (2019)

PRESENTED BY



KW PREMIER PROPERTIES
KELLER WILLIAMS.

Each Keller Williams office is individually owned and operated.



Jennifer Miller
Listing Specialist

Cell: 973.936.9129

Office: 973.376.0033 ext.101

E-mail: info@sueadler.com

sueadler.com/20Beckman