

PRESENTED BY
sueadler 
THE #1 KELLER WILLIAMS TEAM IN NEW JERSEY

kw PREMIER
PROPERTIES
KELLER WILLIAMS
individually owned and operated.

29 Plymouth Avenue
Maplewood, New Jersey



Welcome to 29 Plymouth Avenue! This delightful 3 Bedroom, 1 Full and 1 Half Bath Colonial in sought after Maplewood is located on a picturesque, sought-after block. This home has all the “bones” of a classic Maplewood Colonial and stays true to its classic character. Close to top-notch schools, Maplewood Village, Maplecrest Park, Community Pool and NYC transportation, this home impresses at every turn.



The magic begins when you are greeted by the original hardwood floors and the formal Living Room featuring a stately fireplace and oversized windows (with arched transoms) where the sunlight pours in. The Living Room connects easily to the lovely Maplewood/Sun Room, perfect for use as a Home Office, Play Room or Den.

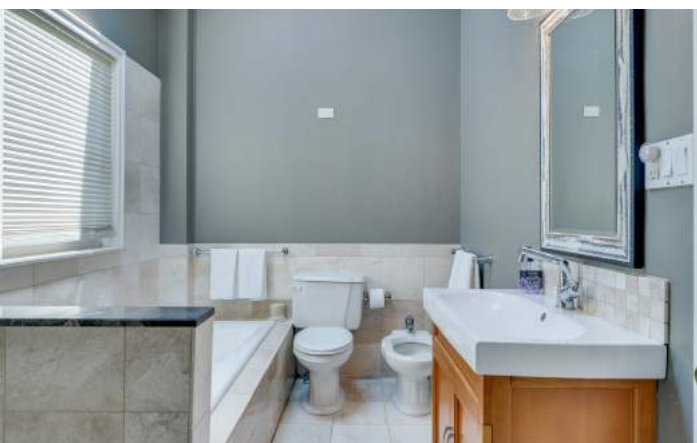






A large archway leads to the beautifully situated Dining Room with a graceful cove ceiling and plenty of room to entertain. Double French Doors lead to an outdoor Deck making indoor/outdoor entertaining seamless. Any chef is sure to enjoy cooking in the renovated Kitchen featuring custom cabinets, granite countertops and stainless steel appliances. The Kitchen includes a Breakfast Bar, a French door leading to the Deck and a tasteful Powder Room is conveniently located nearby. You could easily remove a wall between the Kitchen and Dining Room to create a more open feel.





When it's time to retire for the evening, take the original wood staircase to the Second Level. The Primary Bedroom includes 2 closets, its own Sitting Room and a Vanity/Sink area with built in storage/closets. Enjoy the beautifully renovated Full Hall Bath boasting a built in tub, high-end tile and a vaulted ceiling with skylight. Bedroom 2 includes windows at 2 exposures where sunlight pours in. And it doesn't end there, the Third Level features Bedroom 3 with a cool loft vibe, a skylight and plenty of closet/storage space. And there's more, the spacious Lower Level offers tremendous potential to serve as a Recreation Room, Play Room, Exercise Room and/or Wine Cellar. A Laundry Area rounds out this level.



Outside, the magical backyard includes a large Deck overlooking a lush, flat yard.

Just bring your furnishings and move right in! Don't miss this fabulous opportunity to own 29 Plymouth Avenue and enjoy all Maplewood has to offer in complete style.



- INSIDE & OUT -

FIRST LEVEL

- Decorative front door with arched transom
- Entry Area featuring hardwood floors, Coat Closet, staircases to Second Level
- Living Room featuring hardwood floors, fireplace with custom mantle and stone surround, 2 large windows with arched transoms, sconce, high ceilings, baseboard molding, crown molding, painted soothing gray
- Maplewood/Sun Room featuring French door at entry, hardwood floors, windows at 3 exposures, ceiling fan/light, paneled walls, baseboard molding, painted crisp white
- Dining Room featuring hardwood floors, double French doors with full sidelites to Deck, wainscoting, cove/tray ceiling, chandelier, 2 large windows, painted soothing gray
- Kitchen featuring wood look laminate flooring, custom cabinetry, granite countertops, tumbled tile backsplash, Breakfast Bar, ceiling fan/light, recessed lighting, DCS stainless oven/range, stainless hood, Kitchen Aid stainless, vaulted ceiling with pendant light, French door with full size sidelite to Deck
- Powder Room featuring tile flooring, beadboard wainscoting, wall mount seat, high efficiency toilet

SECOND LEVEL

- Second Floor Landing featuring hardwood floors, Linen Closet, staircase to Third Level, flush mount light
- Primary Bedroom featuring hardwood floors, 2 Closets, windows at 3 exposures, walls with raised moldings, sconces, pendant light, Sitting Room, Vanity/Sink Area with built in storage and double sized Closet, door to Full Bath
- Bedroom 2 featuring hardwood floors, windows at 2 exposures, rustic light with drum shade, Closet, raised moldings
- Full Hall Bath featuring tile flooring, vaulted ceiling with skylight, vanity with integrated top, built in tub, shower with designer tile surround and bi-fold glass door, toilet, bidet, sconce

THIRD LEVEL

- Bedroom 3 featuring 2 doors to attic storage, vaulted ceiling with skylight, Closet, painted floors, ceiling fan/light

LOWER LEVEL

- Staircase to Side Entrance and Lower Level
- Unfinished Lower Level
- Laundry Area with laundry hook up, utility sink

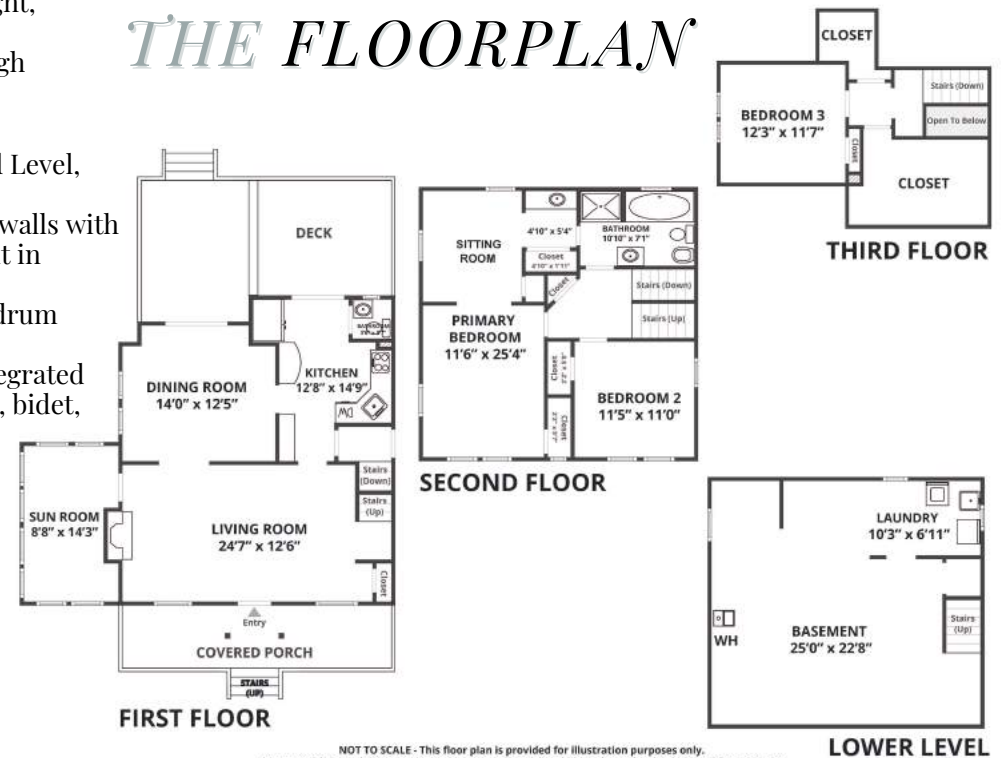
ADDITIONAL FEATURES / UPGRADES

- Original doors and hardware throughout
- Alarm system/ADT

FRONT YARD / BACKYARD

- Paver front walkway
- Stone front staircase
- Front Patio
- Flat grassy property with foundation plantings
- Covered front entry
- Side Entrance (non-driveway side)
- Detached 1 Car Garage
- Flat grassy backyard with stepping stones, fenced-in
- Large, 2-tiered Deck with built in planters and benches

THE FLOORPLAN



NOT TO SCALE - This floor plan is provided for illustration purposes only. Room positions and dimensions are approximate and should be independently measured for accuracy.

PRESENTED BY
sueadler team
 THE #1 KELLER WILLIAMS TEAM IN NEW JERSEY

kw PREMIER PROPERTIES
 KELLER WILLIAMS.

Each Keller Williams office is individually owned and operated.



Larry Chiger
 Listing Specialist

Cell: 973.936.9129

Office: 973.376.0033 ext.101

E-mail: info@sueadler.com

sueadler.com/29Plymouth