

*7 Milton Avenue
Florham Park, NJ*



Welcome to 7 Milton Avenue! This picture perfect 4 Bedroom, 2 Full and 2 Half Bath gem in sought-after Florham Park has it all with close proximity to Florham Park shopping (Kings, Trader Joes, Starbucks), top-notch schools, and Chatham/Madison restaurants/shopping/Midtown Direct Train. With 3 NEW Baths, outstanding property, and a flexible floorplan, this home checks each and every box.



Enter into the Entry Vestibule where you will find a generous coat closet. Move into the blissful, sun-drenched Living Room with hardwood floors and a gorgeous fireplace perfect for cozy nights. Not a thing will be out of place in the spacious Mud Room (off of the 2 Car Garage) with plenty of space to store backpacks, sports equipment, and shoes. An adjacent Study/Office is the perfect work-from-home spot. Dinner parties are divine in the luminous Dining Room with a classic chair rail and gracious bay window. You are certain to be impressed with the updated Chef's Kitchen featuring custom cabinetry, LG and Electrolux stainless appliances, and granite countertops. A cheery Breakfast Room is the perfect spot to enjoy your morning coffee and family meals. The Breakfast Room opens up to the sunny Family Room featuring a chic ceiling fan and provides easy access to the backyard making indoor/outdoor entertaining seamless. A NEW Half Bath rounds out the First Level.



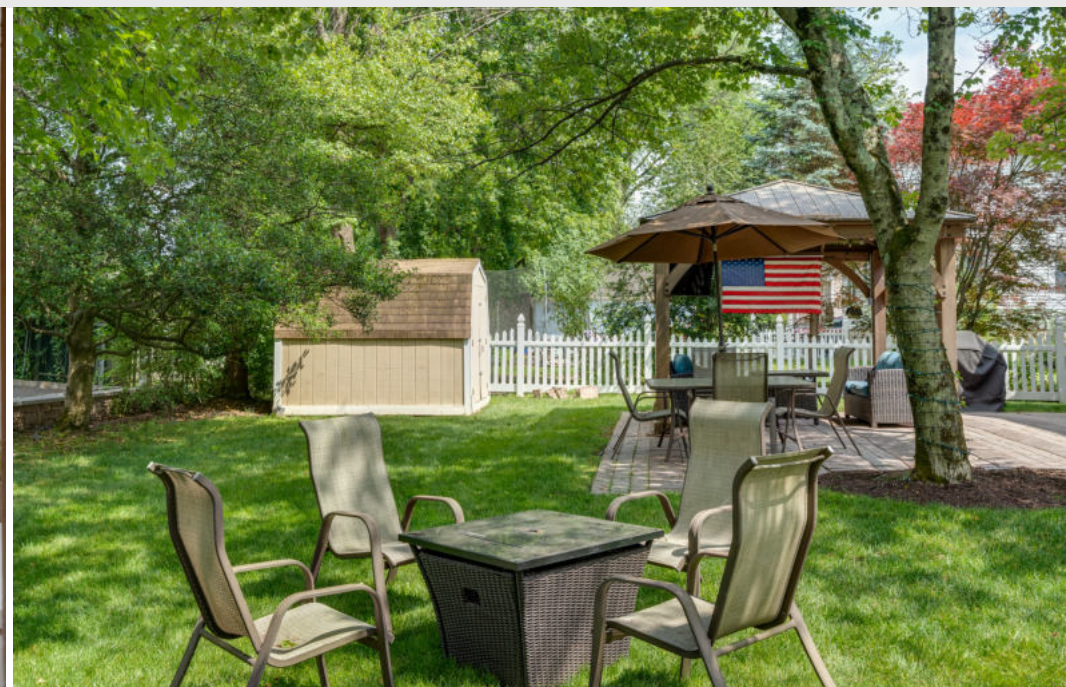
Ready to retire for the evening? Take the staircase upstairs to find an enormous Second Level Landing that could be used as a Sitting Area or Homework Room. The Primary Bedroom Suite boasts tons of sunlight, hardwood floors, a pretty vaulted ceiling, 2 Walk-In Closets, and a NEW Full Bath. Three additional large-sized bedrooms are steeped in sunlight and include generous closets. The bedrooms share the NEW Full Hall Bath with a washbasin/quartz vanity and tons of sleek subway tile.





And there's more! The Lower Level boasts a finished Recreation Room/Play Room with plenty of room for TV watching and arts and crafts. There is also a Half Bath and plenty of storage. Another jewel of 7 Milton is the scenic, park-like property featuring a flat yard and a fabulous Patio for entertaining. Moreover, the property backs up to a cul de sac and a quiet park great for play and strolling.

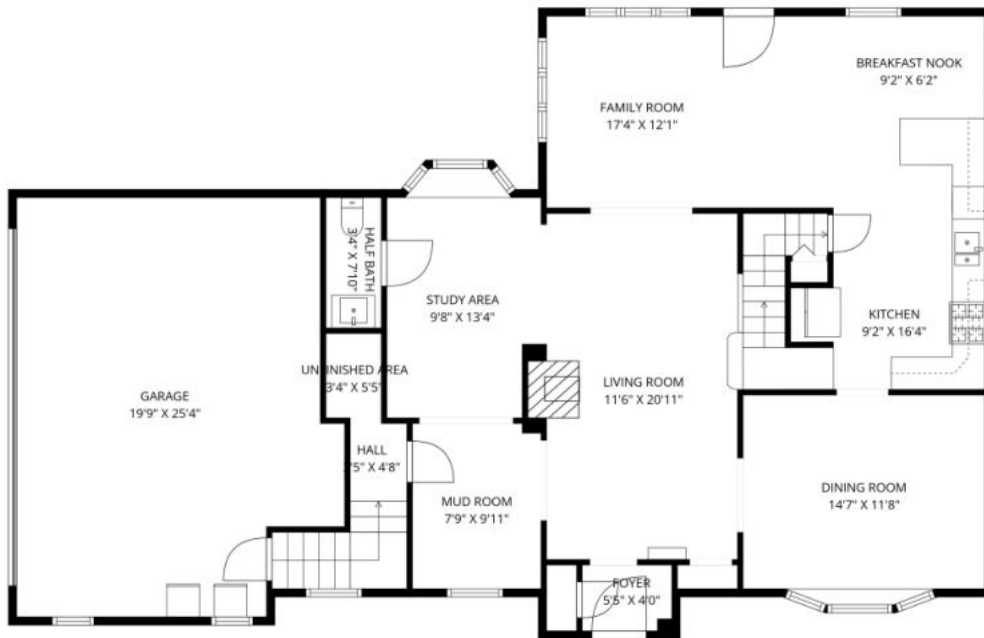
With its sought-after school district and convenience to fantastic shopping/restaurants in Florham Park, Chatham, and Madison and easy access to Midtown Direct Train, you will undoubtedly want to call 7 Milton Avenue home.



THE FLOORPLAN



SECOND LEVEL



FIRST LEVEL



LOWER LEVEL

- INSIDE & OUT -

FIRST LEVEL

- Entry Vestibule featuring hardwood floors, Coat Closet, flush mount light, baseboard molding
- Living Room featuring hardwood floors, fireplace with brick surround and wood mantle, recessed lighting, crown molding, baseboard molding, staircase to Second Level
- Mud Room featuring hardwood floors, flush mount light, window, crown molding, baseboard molding, door to Garage
- 2 Car Garage featuring staircase, Closet, electric doors
- Study/Office featuring hardwood floors, bay window, flush mount light, window, crown molding, baseboard molding, door to Powder Room
- NEW Powder Room featuring tile flooring, vanity with quartz countertop, baseboard molding, crown molding, sconce, Kohler toilet
- Dining Room featuring hardwood floors, bay window, chair rail, chandelier, crown molding, baseboard molding
- Chef's Kitchen featuring tile flooring, custom cabinetry, granite countertop, mosaic tile backsplash, Electrolux stainless refrigerator/freezer with ice/water dispenser, LG stainless dishwasher, Electrolux stainless oven/range, recessed lighting, LG built-in dishwasher, pendant light
- Breakfast Room featuring tile flooring, wainscoting, windows at 2 exposures, crown molding, door to backyard
- Family Room featuring carpeting, windows at 2 exposures, ceiling fan, recessed lighting

SECOND LEVEL

- Staircase to Second Level
- Second Level Landing featuring hardwood floors, flush mount light, window, crown molding, baseboard molding, Linen Closet
- Primary Bedroom Suite featuring hardwood floors, vaulted ceiling, ceiling fan/light, windows at 2 exposures, 2 Walk-In Closets, Linen Closet, NEW Bath featuring tile flooring, double vanity with beadboard detail and integrated top, LED mirror, subway tile wainscoting, frameless glass door shower with tile surround, Kohler toilet, fan/light, recessed lighting, rain showerhead
- Bedroom 2 featuring hardwood floors, vaulted ceiling, ceiling fan/light, 2 Closets, baseboard molding
- Laundry Room featuring tile flooring, LG front loader washer, and dryer on pedestals
- Bedroom 3 featuring hardwood floors, 2 windows, double sized Closet, flush mount light, crown molding, baseboard molding
- Bedroom 4 featuring hardwood floors, windows at 2 exposures, Closet, ceiling fan/light, crown molding, baseboard molding
- NEW Bath featuring tile flooring, vanity with washbasin sink and quartz countertop, LED mirror, subway tile wainscoting, tub/shower combination with tile surround, Kohler toilet, fan/light, recessed lighting, sliding glass doors

LOWER LEVEL

- Staircase with Pantry at top of stairs
- Recreation Room featuring wood look tile, beadboard walls, flush mount lighting, baseboard molding, utility closet, door to crawl space
- Half Bath featuring wood look tile, shelf, vanity, tile wainscoting, Kohler toilet
- Storage Room
- Utility Room

ADDITIONAL FEATURES / UPGRADES

- 3 bathrooms renovated 2023
- Easy maintenance siding
- Newer AC/furnace
- 1 side is on cul de sac leading to Beechcrest Park

FRONT / BACK YARD

- Front lawn with foundation plantings
- Brick and stone front steps
- Large driveway with Belgian block border and Belgian block entry area
- Large, flat grassy yard
- Paver Patio
- Shed



kww PREMIER
PROPERTIES
KELLERWILLIAMS.

Each Keller Williams office is individually owned and operated.



Melissa Bulwith
Listing Specialist

Cell: 973.936.9129
Office: 973.376.0033 ext.101
E-mail: info@sueadler.com
sueadler.com/7Milton