

PRESENTED BY  
**sueadler**   
THE #1 KELLER WILLIAMS TEAM IN NEW JERSEY

**kw** PREMIER  
PROPERTIES  
KELLERWILLIAMS.  
*Each Keller Williams office is  
individually owned and operated.*



6 Sunset Drive

Summit, New Jersey



*Welcome to 6 Sunset Drive in Summit's coveted Franklin School neighborhood! Sitting majestically on a park-like piece of property, encased by shade trees and bursting with blooming perennials, you'll find this spectacular 5 Bedroom 2.1 Bath historic home. With architectural magnificence at every turn, character unlike anything else on the market, and an exceptional location close to New Providence Train Station (or park in Summit), Summit Tennis Club, Clearwater Swim Club, King's, Towne Deli and downtown Summit restaurants and shopping, 6 Sunset Drive is just waiting to be called home.*



*The striking, covered front entrance is graced by the original Entry Door flanked by original sidelites and transom. Enter the spacious and elegant Entry Foyer and prepare to be overwhelmed by the stunning craftsmanship and timeless architectural details including magnificent chestnut moldings with a warm gray finish, an inviting bench and a coffered ceiling.*



*The Living Room will take your breath away with another stunning coffered ceiling and a magnificent fireplace for cozy nights by the fire. Off of the Living Room, don't miss the Family Room teeming with natural light and the perfect spot to take in idyllic garden views.*





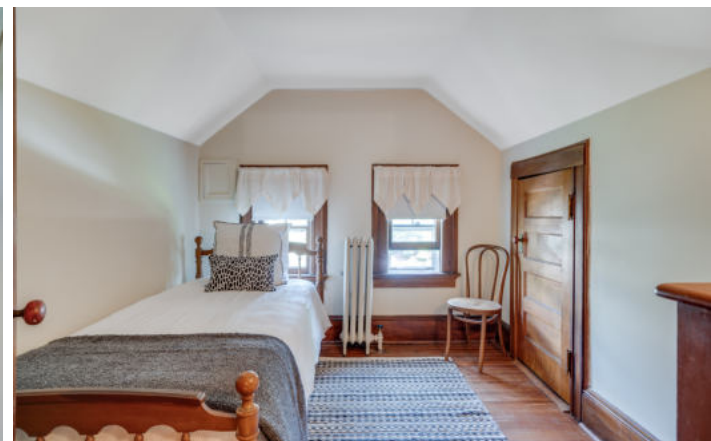
*Ready to host a dinner party? You simply cannot find a better venue than the Formal Dining Room. A stately chestnut original pocket door, a bay of windows, yet another coffered ceiling and a pretty brushed gold chandelier are enchanting. The Dining Room flows easily into the Butler's Pantry with its original cabinetry providing plenty of storage for dishes and barware.*



*The Kitchen includes wood cabinetry, garden views and opens up to a Mud Room Area and rear staircase. Rounding out the First Floor is a Half Bath/Laundry Closet.*



*When it's time to retire for the evening, the original, regal staircase, where chestnut moldings abound, leads you to a second floor with four bedrooms, hardwood floors, original doors and original hardware.*



*Pretty details are all around the Primary Bedroom where the sunlight pours in. As is typical in an early 1900s home, each bedroom connects to the next creating a chain of beautiful spaces. An Office and Bedroom 2 could easily be combined with the Primary to create a large Primary Suite. Bedrooms 3 and 4 are extra unique as they each contain French doors leading to a dreamy Sun Room. Two Full Hall Baths round out the Second Level. Take the staircase to the Third Level where you will find darling Bedroom 5 and plenty of Attic/Storage space.*



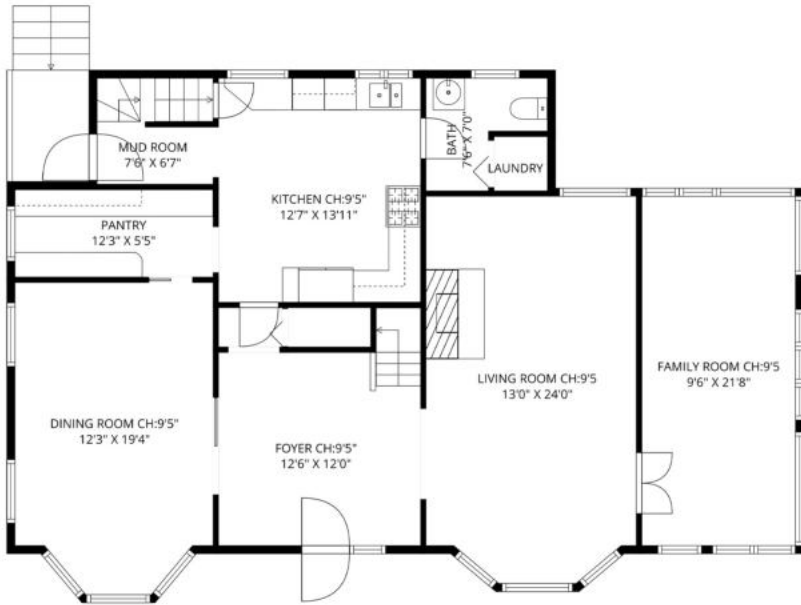
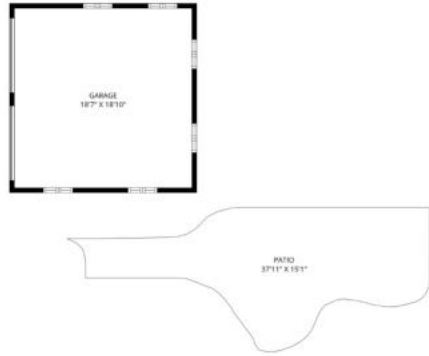


*And that's not all! The Lower Level includes plenty of functional space with a Recreation Room, Pool Table Room, and multiple storage spaces.*

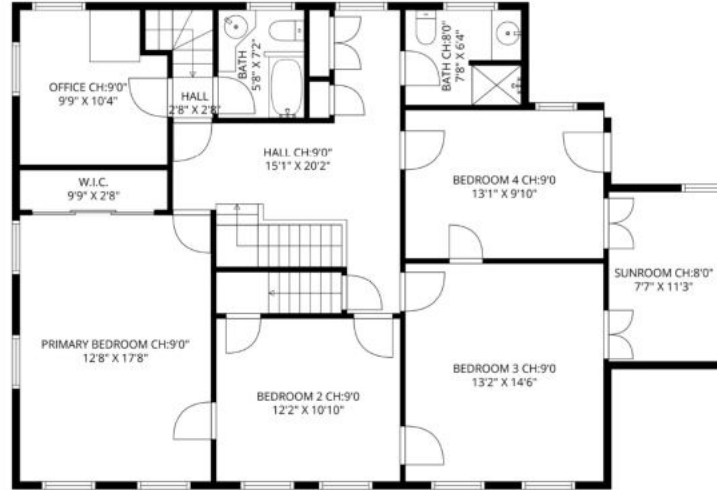
*Don't miss this great opportunity to own an historic home with incredible character in one of Summit's best neighborhoods. Close to all Summit has to offer, 6 Sunset Drive is an absolute dream!*



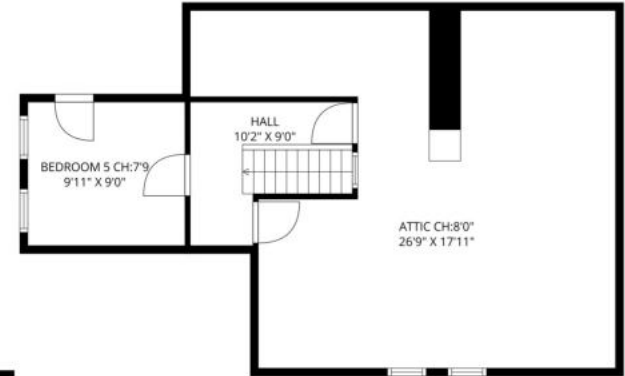
# THE FLOORPLAN



**FIRST LEVEL**



**SECOND LEVEL**



**THIRD LEVEL**



**LOWER LEVEL**

NOT TO SCALE - This floor plan is provided for illustration purposes only.  
 Room positions and dimensions are approximate and should be independently measured for accuracy

# - INSIDE & OUT -

## FIRST LEVEL

- Entry Foyer featuring original door with 2' sidelites and transom, coffered ceiling, chestnut paneling, chestnut moldings leading to a plate rail, hardwood floors, original built in chestnut bench, original staircase to Second Level, light fixture, Coat Closet
- Dining Room featuring original full chestnut pocket door and arched entry, coffered ceiling, original baseboard moldings, bay of windows plus 2 windows, custom radiator cover, brushed gold chandelier, wallpaper
- Living Room featuring hardwood floors, fireplace with original mantle, coffered ceiling, bay of windows at front, window at back, original baseboard moldings, light fixture
- Family Room featuring original French door at entry, carpeting, windows at 3 exposures, door at front, beadboard ceiling, paneling below
- Butler's Pantry featuring original cabinetry, laminate countertops, window, tile flooring, chandelier, sconce, original baseboard molding
- Kitchen featuring tile flooring, wood cabinetry, ceiling fan/light, GE Profile refrigerator/freezer with ice/water dispenser, KitchenAid stainless oven/range, KitchenAid dishwasher, Kitchen trash compactor, stainless hood, granite countertops, tile backsplash, sconce, door to Lower Level
- Mud Room Area off Kitchen, rear staircase, side door
- Half Bath/Laundry Room featuring hardwood floors, pedestal sink, Laundry Closet with LG front loader washer/dryer, cabinet, baseboard molding

## THIRD LEVEL

- Bedroom 5 featuring hardwood floors, eave storage/small Closet, sconce, 2 windows, vaulted ceiling, baseboard molding
- Extensive attic/storage, potential for expansion

## LOWER LEVEL

- Recreation Room featuring carpeting, drop ceiling with lighting
- Pool Room (pool table included), chandelier, bilco doors to backyard
- Storage Rooms (1 with utility sink)

## SECOND LEVEL

- Front and rear staircases
- Primary Bedroom featuring carpeting, windows at 2 exposures, triple-sized Closet, sconce, crown molding, baseboard molding, door to Bedroom 2
- Office Featuring hardwood floors, window at 2 exposures, crown molding, baseboard molding, sconce
- Full Hall Bath featuring tile flooring, corner vanity, tile wainscoting, window, shower
- Bedroom 2 featuring carpeting, 2 windows, Closet, wallpaper, sconce, door to Bedroom 3
- Bedroom 3 featuring carpeting, 2 windows, Walk in Closet, wallpaper, chair rail, sconce, double doors to Sun Room, crown molding, baseboard molding, door to Bedroom 4
- Bedroom 4 featuring carpeting, window, Walk-in Closet, wallpaper, sconce, double doors to Sun Room, crown molding, baseboard molding
- Sun Room featuring carpeting, windows, crown molding, baseboard molding, double doors with access to Bedroom 3, double doors with access to Bedroom 4
- Second Full Hall Bath featuring tile flooring, vanity, Linen Closet, tile wainscoting, shower, window
- Large landing with 3 Linen Closets

## FRONT YARD / BACKYARD

- About 1/3 acre
- Stone front walkway flanked by pachysandra, hydrangea, Japanese maple (to name a few)
- Original covered front entry, bluestone landing
- Brick Patio
- Rear porch/steps
- Detached 2 car garage
- Tiered yard with shade trees, rose bushes, hydrangea, rhododendrons, crisp hedges providing immense color and privacy

## ADDITIONAL FEATURES / UPGRADES

- NEW (2023) AC (2nd floor and kitchen)
- Knob and tube electric updated (2022)
- Original doors, moldings and hardware throughout
- Hardwood floors underneath carpets on the 2nd Floor

PRESENTED BY



Each Keller Williams office is individually owned and operated.



Jennifer Miller  
Listing Specialist

Cell: 973.936.9129

Office: 973.376.0033 ext.101

E-mail: [info@sueadler.com](mailto:info@sueadler.com)

[sueadler.com/6Sunset](http://sueadler.com/6Sunset)