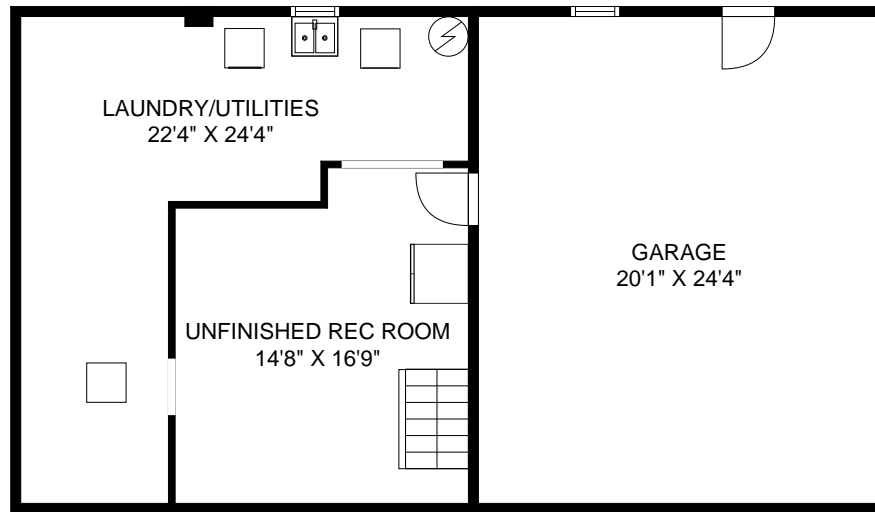
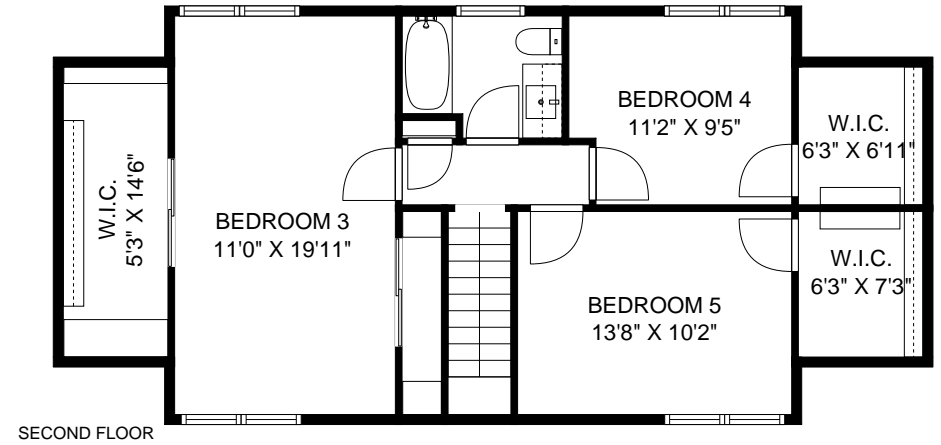
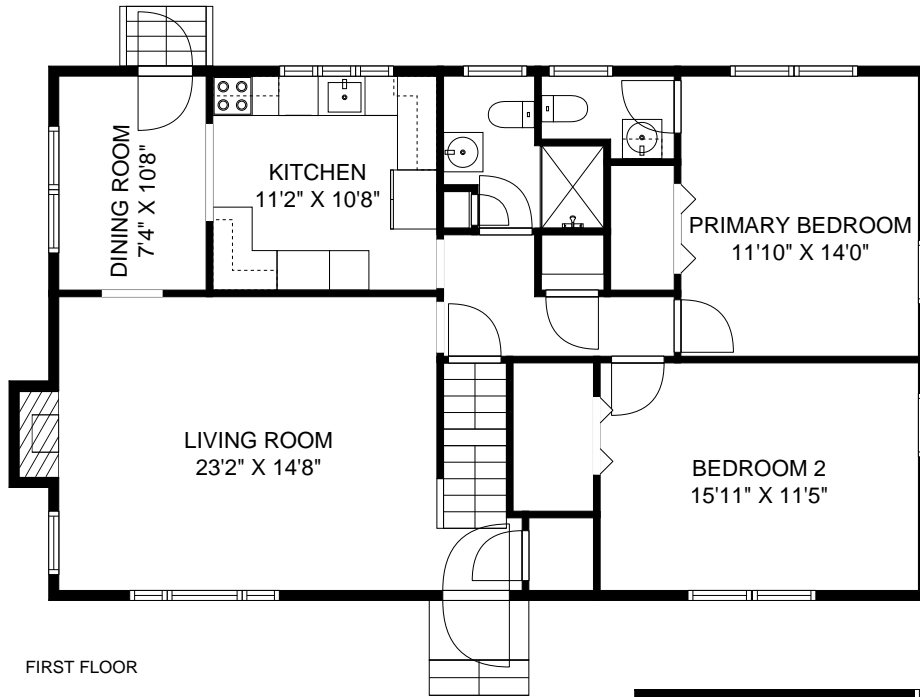


# THE FLOOR PLAN

## 755 River Road

### Chatham, New Jersey



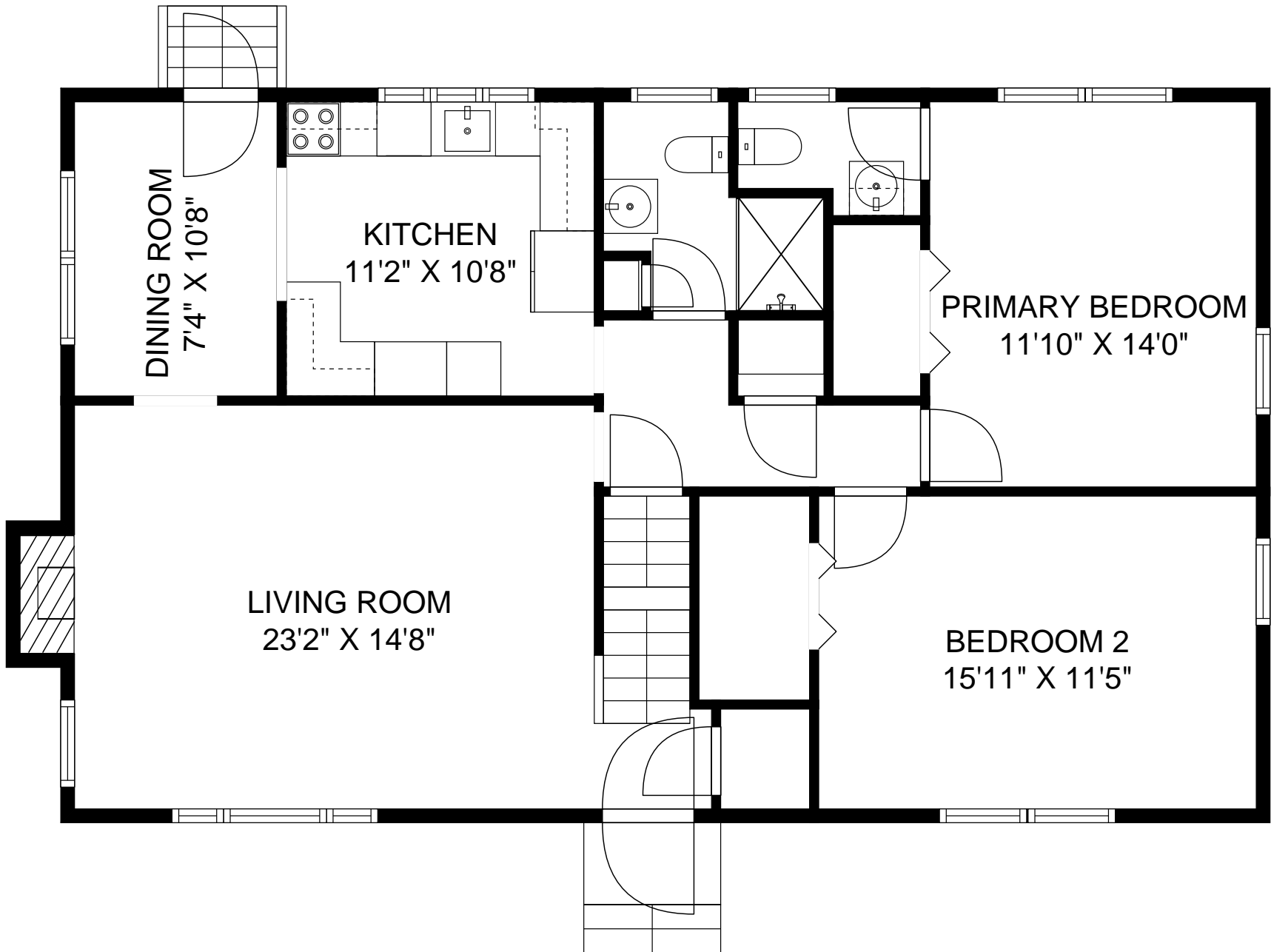
NOT TO SCALE - This floor plan is provided for illustration purposes only.  
Room positions and dimensions are approximate and should be independently measured for accuracy

LAUNDRY/UTILITIES  
22'4" X 24'4"

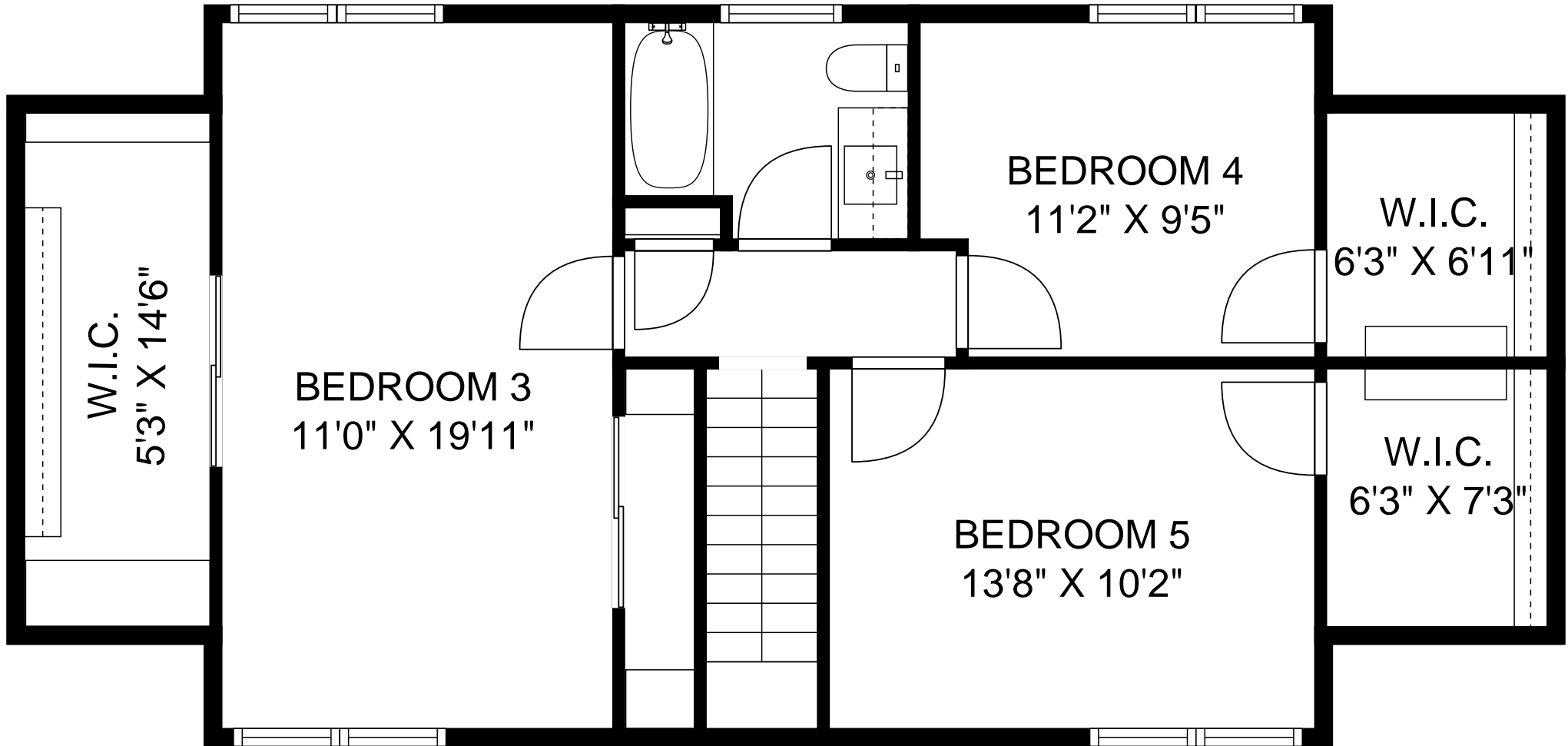
The floor plan shows a rectangular area divided into three rooms. The Laundry/Utilities room is at the top, containing a double-door cabinet, two square symbols, and a lightning bolt symbol. The Unfinished Rec Room is at the bottom left, containing a square symbol and a window with a grid pattern. The Garage is on the right, containing a door and a window. A thick black line separates the Laundry/Utilities and Unfinished Rec Room from the Garage.

UNFINISHED REC ROOM  
14'8" X 16'9"

GARAGE  
20'1" X 24'4"



NOT TO SCALE - This floor plan is provided for illustration purposes only.  
Room positions and dimensions are approximate and should be independently measured for accuracy



NOT TO SCALE - This floor plan is provided for illustration purposes only.  
Room positions and dimensions are approximate and should be independently measured for accuracy