

## 13 PINCHBROOK DRIVE, FLORHAM PARK, NJ

4 BEDROOM + BONUS ROOM | 4 BATHROOM



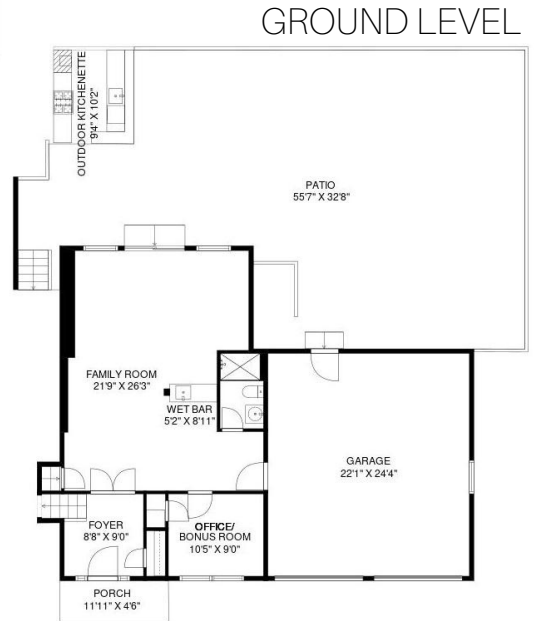
***Welcome to 13 Pinchbrook Drive, a NEWLY RENOVATED, Custom Split-Level nestled on close to an acre of sprawling property, in the lovely Florham Park community!***

*This home offers a perfect balance of indoor-outdoor living and entertaining. Featuring abundant upgrades and renovations throughout. With its fabulous Florham Park location, close proximity to great schools, NYC commute, and so much more... this is one you don't want to miss!*



**To view this home's Digital Showcase, complete with professional photography, a 3D walkthrough, floor plans, in-depth details, and more, scan the QR code**

# THE FLOORPLAN



*NOT TO SCALE - This floor plan is provided for illustration purposes only.  
Room positions and dimensions are approximate and should be independently measured for accuracy*



**LAURA NORWALK**  
Listing Specialist

C: 917.596.3176  
O: 973.376.0033 x101  
info@sueadler.com

PRESENTED BY  
**sueadler** team  
THE #1 KELLER WILLIAMS TEAM IN NEW JERSEY

**kw** PREMIER  
PROPERTIES  
KELLERWILLIAMS.

*Each Keller Williams office is individually owned & operated.*

To view this home's  
Digital Showcase  
scan the QR code  
or visit [sueadler.com/](http://sueadler.com/)  
13Pinchbrook

