

PRESENTED BY
sueadler 
THE #1 KELLER WILLIAMS TEAM IN NEW JERSEY

kw PREMIER
PROPERTIES
KELLER WILLIAMS
*Each Keller Williams office
individually owned and operated.*



*25 Twin Oak Road
Short Hills, New Jersey*



WELCOME HOME!





Welcome home to this 6-bedroom, 4.2-bathroom residence located on a quiet, storybook, horseshoe street in coveted Old Short Hills. This true lifestyle home features stunning renovations that tastefully blend timeless character with chic Manhattan style. Bevolo Gas Lamps adorn a custom front door from London, guiding you to the Foyer with a vaulted black beadboard ceiling and a large Living Room with a deep original stone fireplace, partially beamed ceiling, and dentil crown molding.





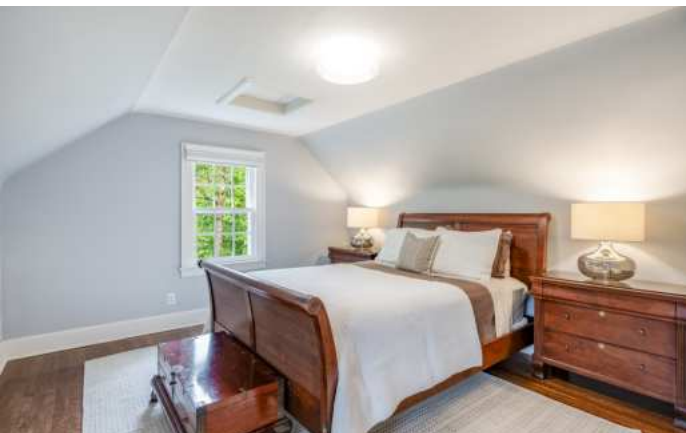
The Family Room has a modern beamed ceiling and generous bay window, while the Dining Room boasts beautiful wainscoting.

The gourmet Eat-In Kitchen is every chef's dream, with a large island and dining nook with custom leather banquette. The Kitchen also has quartz countertops, Wolf and Sub Zero appliances, a Paonazzo Italian black-veined white marble backsplash, and a Walk-In Pantry, making it the heart of the home.

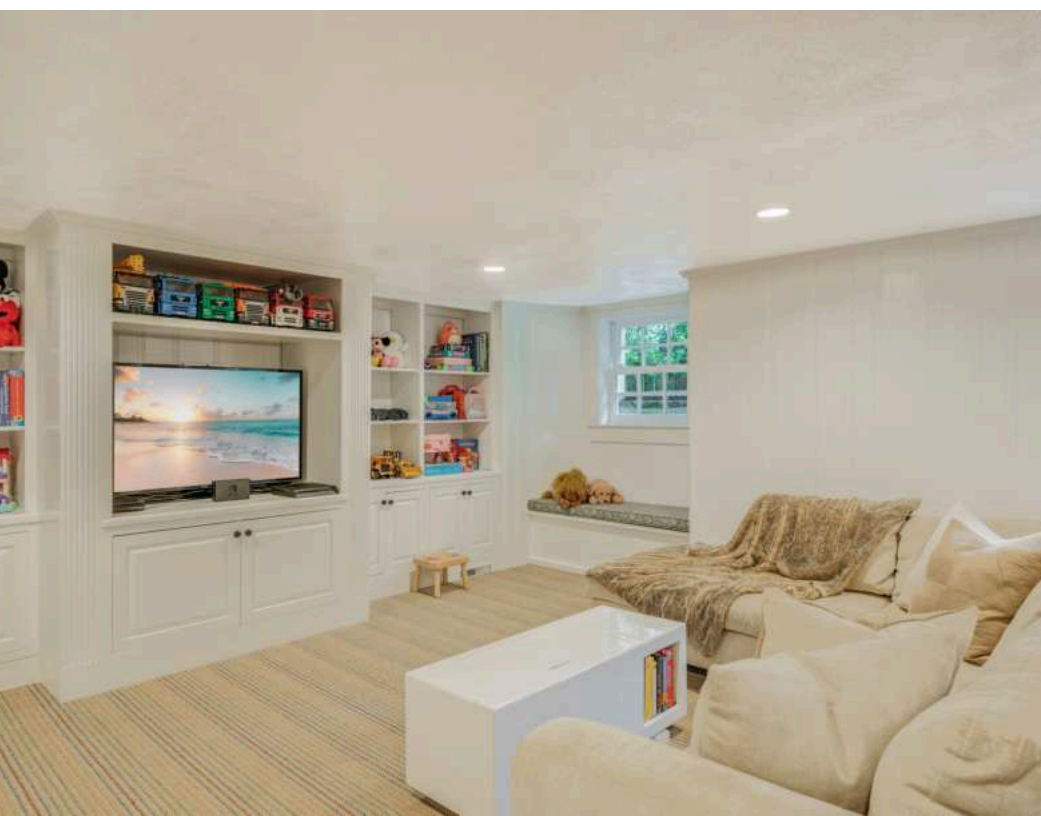


On the second level, you will find the Primary Bedroom with a renovated and expanded custom Walk-In Closet and a luxurious NEW Primary Bathroom with a double marble vanity and an oversized, exposed pipe double shower.



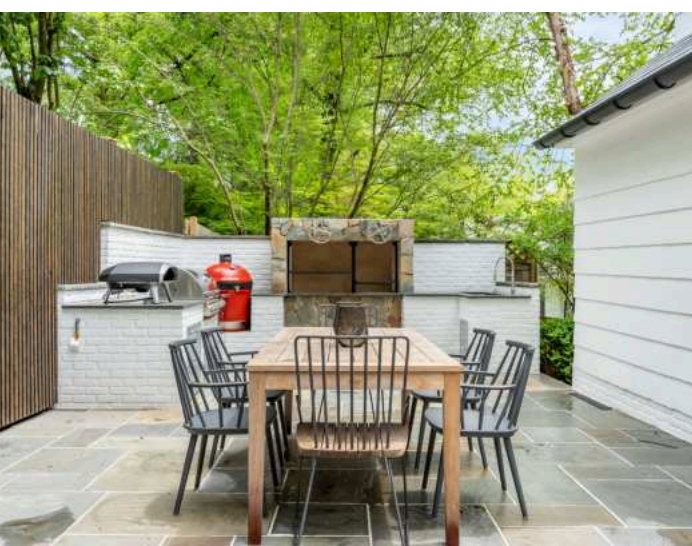
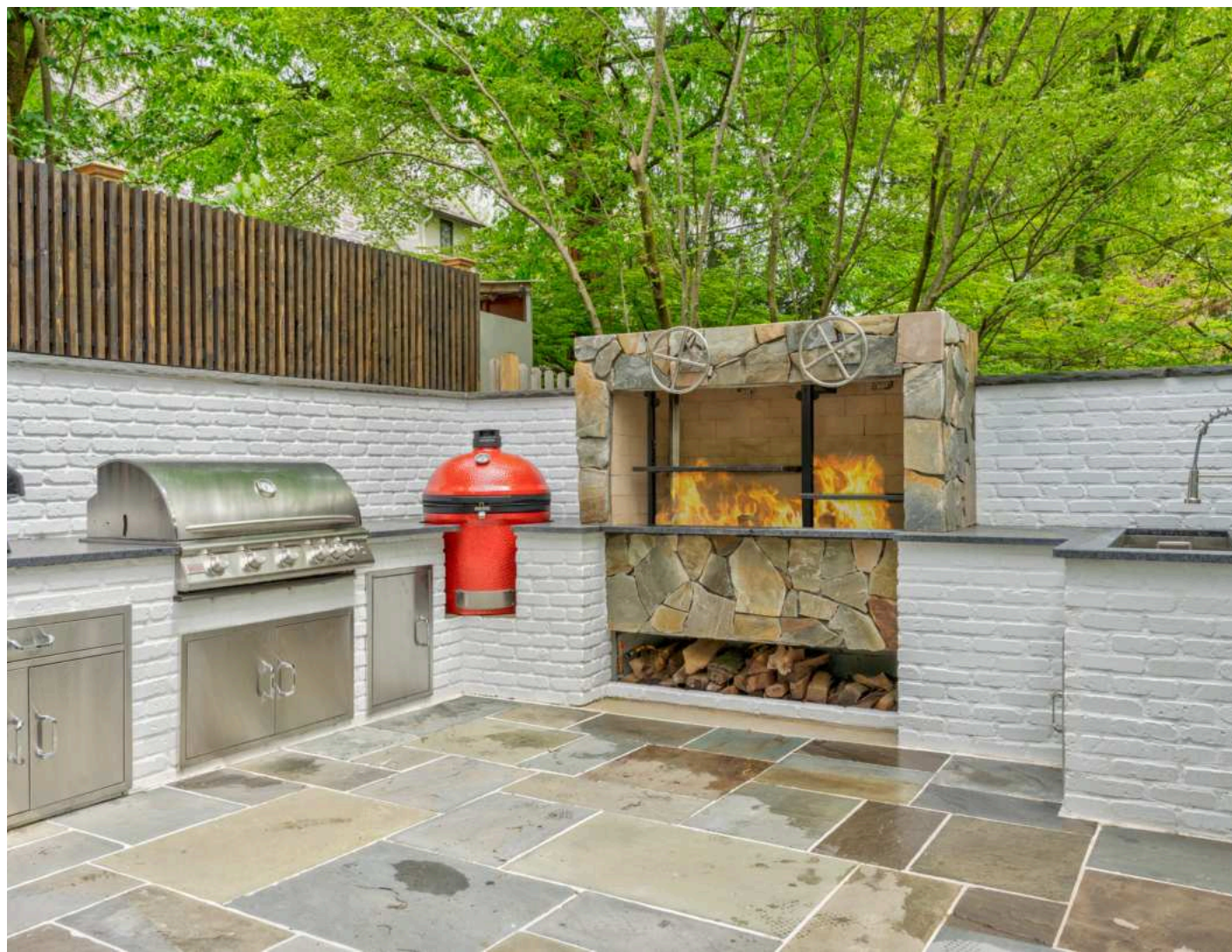


You'll love the three additional large Bedrooms, including one En-Suite, a new full Hall Bath, and a new Laundry Area, coupling luxury with convenience. Move up to the Third Level for two more large Bedrooms and a full Hall Bath. The finished Lower Level is perfect for entertainment, with a Laundry Room, Powder Room, "Costco bulk storage pantry," Wine Cellar for 90 bottles, and more.





The wow factor continues outside with lush, manicured landscaping and two large Bluestone Patios with a Maryland-sourced stone fireplace. There is also an extraordinary outdoor kitchen with an Argentine wood fire grill, Blaze gas grill, XL Kamado Joe smoker, and a pizza oven gas hook-up.



- INSIDE & OUT -

FIRST LEVEL

- Custom front walkway featuring natural gray bricks sourced from Texas, 4 gas lamps custom made from Bevolo in New Orleans, custom canopy overhang with a dark wood beadboard ceiling, recessed lighting and built-in water drainage system
- Entry Foyer with custom stunning front door imported from London with European stainless steel locking system and French door-like sidelights, richly stained dark oak hardwood floors, crown molding and baseboard molding, vaulted lacquer black beadboard ceiling, Coat Closet
- Double French side door leading to a matching gray brick landing featuring exposed crisp white brick and one window
- Living Room featuring dark oak hardwood floors, crown dentil molding with lacquered white beamed ceiling, baseboard molding, original fireplace with new black granite flooring and original stone border (matching outside stone) with above dentil molding mantel, recessed lighting, 7-foot-wide three-paneled bay window and one additional window at two exposures
- Family Room featuring dark oak hardwood floors, modern beamed ceiling with recessed beadboard accents, baseboard molding, recessed lighting, 9-foot-wide three-paneled bay window and one window at two exposures
- Hall Double French Door exiting to slate roof covered side entrance with matching dark wood beadboard ceiling and blue stone steps down to Backyard bluestone patio
- * Dining Room featuring dark oak hardwood floors, crown molding, wainscot molding, recessed lighting, three windows at two exposures
- Gourmet Chef's Eat-In-Kitchen with dark oak hardwood floors, crown molding and baseboard molding, custom-made leather wraparound banquette in dining nook with three-paneled bay window, Quartz countertops, crisp white cabinetry with glass fronts and blue-gray lacquered cabinetry, Paonazzo Italian black veined and white marble backsplash, large center island with extra-wide drawers, deep cabinets and built-in bookshelf, overhead modern pendant lighting and recessed lighting, black lacquered
- French pocket-door to pantry, Bosch dishwasher, alcoved Wolf 6-burner gas stove with hidden, ceiling mounted range hood, Sub-Zero refrigerator, stainless steel farmhouse sink, Summit wine cooler, total of six windows at two exposures
- Walk-In-Pantry with custom Spanish tile flooring
- Powder Room featuring marble floors, design wallpaper from London, pedestal sink, one window with custom wood shutters
- Mudroom featuring slate flooring, five custom built-in cubbies with benches, recessed lighting, hooks along wall for guest jackets and backpacks, door access to driveway

SECOND LEVEL

- Primary Bedroom featuring oak hardwood floors, baseboard molding, carpeted custom walk-in closet with pocket door and shelving/drawers, recessed lighting, three windows at two exposures
- Primary En Suite Bathroom featuring marble floor, marble wall surround, 72 inch double marble vanity with wood cabinetry, oversized glass door, 8 foot long exposed pipe double shower-head shower, marble surround and hidden drain, toilet closet, recessed lighting, one window
- Bedroom Two featuring oak hardwood floors, partially vaulted ceiling, baseboard molding, recessed lighting, deep closet, custom built-in cabinets and bookshelves, three windows at two exposures
- Bedroom Three featuring oak hardwood floors, baseboard molding, recessed lighting, deep closet, two windows at two exposures
- En Suite Bathroom featuring tile floors, glass door shower with tile surround, pedestal sink, recessed lighting, sconce lighting, one window with custom wood shutters

- Bedroom Four featuring oak hardwood floors, baseboard molding, built-in window seat nook with underneath storage, two closets, recessed lighting, three windows at three exposures
- Two Hall Linen Closets (one double door with deep shelving/drawers)
- Hall Full Bath featuring marble floor, 72 inch double marble vanity with wood cabinetry, glass door bathtub/shower with marble surround, recessed lighting, supply/linen closet, one window
- Second Level Laundry featuring LG washer/dryer and door

THIRD LEVEL

- Bedroom Five featuring oak hardwood floors, baseboard molding, partially vaulted ceiling, closet, light fixture, two windows at two exposures
- Bedroom Six featuring oak hardwood floors, baseboard molding, partially vaulted ceiling, built-in crisp white cabinetry and desk/shelving for ideal home office, deep and long closet, recessed lighting, four windows at two exposures
- Full Hall Bath featuring decorative tile floors, Quartz vanity with wood cabinetry, glass door bathtub/shower with subway tile surround, recessed lighting, one window with custom wood shutters
- Hall cedar closet (double deep)

LOWER LEVEL

- Entertainment Area, carpeted, featuring wall-to-wall wood paneling
- Custom Study/Office alcove with crisp white built-in cabinetry/desk/shelving, built-in window bench, recessed lighting, three windows at two exposures
- Laundry Room featuring new floor, LG washer, Whirlpool dryer, supply closet and cabinets, wainscoting beadboard and two long countertops for folding laundry
- Storage/Utility Room (expansive) with custom built-in cabinets lining two long walls for ample storage, wood counter working station with hanging tool paneling and fully wired tech panel with shelving
- Powder Room featuring ceramic tile surround, pedestal sink
- "Suitcase" Storage Room
- Large Walk-In-Cedar Closet with shelving
- Additional "Costco Closet" as pantry for bulk storage
- Additional wine storage with capacity for 90-bottle display plus shelving

FRONT YARD / BACKYARD

- Two bluestone patios - 20ft x 50ft and 13ft x 12ft
- Level, Fenced-In Backyard (fence is black stained cedar)
- Custom Outdoor Gourmet Kitchen featuring granite countertops, crisp white exposed brick with stainless steel drawers and cabinets for storage, custom Southern Maryland sourced stone 6-foot-wide fireplace flanked by two deep wood storage areas, cedar-stained wood slatted 10-foot wall surround, 60-inch wide Argentine natural wood fire grill, Blaze 6-burner gas grill, Kamado Joe XL ceramic smoker, gas hook-up for pizza oven, 57" stainless steel sink for beer/wine ice baths
- Bluestone paved back walkway with stained black red cedar arbor and lush landscaping providing full walkaround property
- Designer landscaping with three Japanese maple trees, six crepe myrtle, three blue spruce trees, Driveway lining holly trees, two hydrangea trees, large rhododendron groupings, numerous hydrangeas, and boxwood plantings surrounding the entire property

ADDITIONAL FEATURES & UPGRADES

FIRST LEVEL

- Redesigned the entire First Level floorplan
- Moved front door and walkway to new location
- Created new pantry with French pocket door and glass panels
- Created new mudroom with custom cubbies, benches and slate flooring
- Replaced flooring throughout first floor with new dark stain
- Widen walls or removed walls for better flow throughout floor
- New staircase to upstairs
- Kitchen renovations (2022)

FOYER / FRONT ENTRANCE

- Exposed brick in new main foyer
- Added coat closet in new main foyer
- Added new custom door from London and sidelights in new main foyer
- Added black lacquered beadboard ceiling
- Added canopy overhangs over front entrance and kitchen side entrance with recessed lighting, built-in water drainage, dark wood stained beadboard to match new interior flooring

KITCHEN

- Rearranged kitchen floorplan for better flow
- Added new appliances including Wolf six burner range, Summit Wine Refrigerator
- Added larger stainless steel farmhouse sink
- Created kitchen nook with custom leather banquette
- Created alcove gas oven range with hidden vent hood
- Added new backsplash with Italian marble
- Added new quartz counters
- Added all new kitchen hardware

LIVING ROOM

- Replaced stone flooring to black granite in original home fireplace
- Added in floor electrical outlets
- Wired speaker cables to basement Sonos system

FAMILY ROOM

- Created new TV room by removing walls
- Created beam ceiling with recessed lighting in new TV room that added height
- Installed 9 foot bay window to new TV room

SECOND LEVEL

- Built brand new master and hallway bathrooms (2024)
- Renovated and expanded master walk-in closet
- New flooring in hallway and stained dark to match 1st floor
- Rebuilt staircase to 2nd Floor with new spindles and renovated railing
- New carpet to Third Level (2022)

THIRD LEVEL

- Installed new lighting in Bedroom 6
- Installed new ceiling fan

LOWER LEVEL

- Built wine storage
- Built Pantry overflow closet
- Added beadboard paneling to hallways and laundry room
- Renovated basement bathroom
- Added two sump pumps

GENERAL

- New smart thermostat system (Nest)
- New ADT security with all new wireless fire and smoke alarms
- New smart Nest alarms
- New smart doorbell ring
- Wired entire home with dedicated Gb+ Ethernet
- Two-car garage
- Renovated chimney
- Built-in Sonos speakers throughout home (First Level and Lower Level)
- Smart indoor/outdoor lighting, security, and lock system (2022)
- Smart Home (2022)
- Custom Belgian block footing
- Water filtration throughout entire home
- Ethernet connected throughout entire home
- Slate roofs newly maintained (2024)
- All new 8" gutters (2023)
- All new LED lighting (2022)
- Smart wireless Irrigation System
- Air Moisture Filter
- Garbage Corral - street-side wooden shed to conceal garbage cans

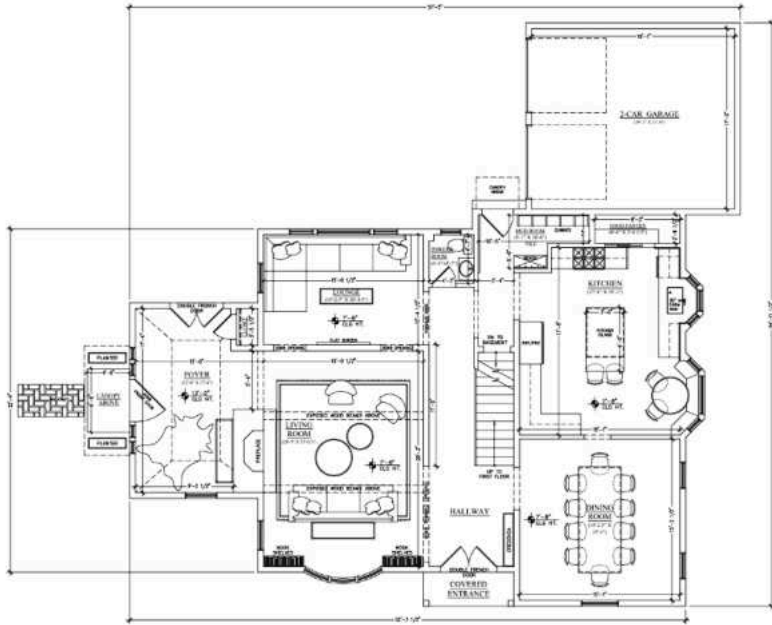
LANDSCAPE

- Leveled yard with new retaining wall
- Installed French drain
- Installed new red cedar fence surrounding entire property
- Installed new gate for driveway and walkway opening
- Installed 20 green giants to create completely private side yard
- Installed all new landscaping, including Maple trees, Crepe Myrtles, Holly Trees
- Installed all new irrigation system, with wireless smartphone control and monitoring
- Installed new pathway in back with cedar arbor and new landscaping, including 20 hollies for privacy
- Installed new bluestone patio in Backyard
- Built outdoor kitchen with new gas grill, new wood grill (Argentine), new smoker and gas lines for pizza oven
- Built new fireplace in large patio
- Renovated entire large patio with new bluestone
- Installed new modern, wood slat dark stained cedar fence in large patio
- Installed new driveway and widened side to create basketball court and more space for parking
- Built and installed new garbage container unit
- New larger and deeper aluminum gutters with mesh coverings and reinforced leads to street
- Installed new lighting outdoors across all landscaping
- Installed gas lamps custom made from Bevolo in New Orleans
- Installed new brick front walkway and side apron with custom brick from Texas (Old Texas Brick)
- Unique landscaping surrounding property
- Outdoor Kitchen includes gas hook-up for pizza oven (2024)

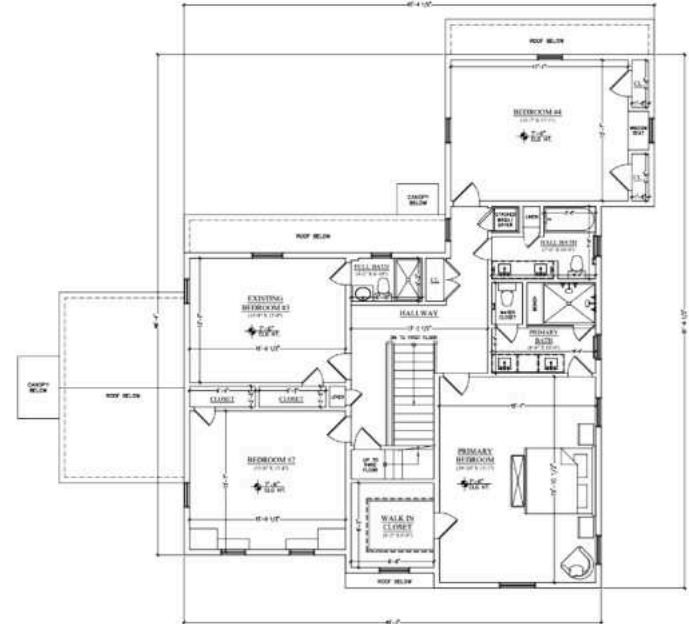


25 Twin Oak Road is located just 1.8 miles from the train and 0.3 miles from Glenwood School. With its beautiful blend of charm, modern amenities and custom upgrades, and close proximity to the NYC train, Glenwood School, and the Cora Hartshorn Arboretum, this home is a true gem that you do not want to miss!

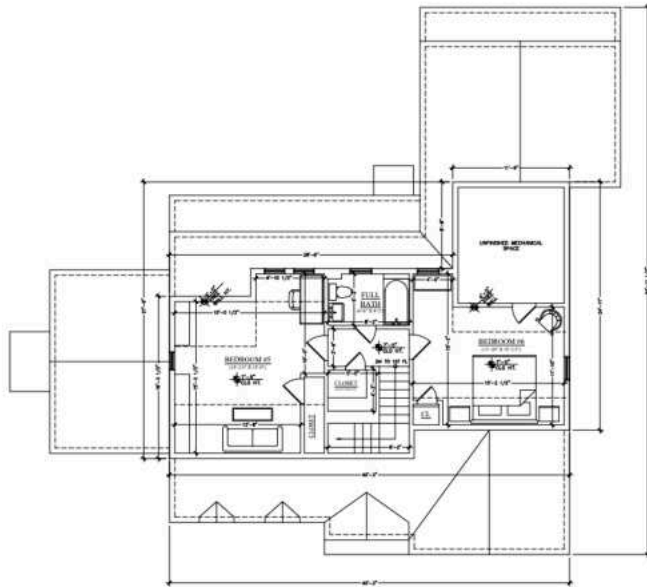
- THE FLOORPLAN -



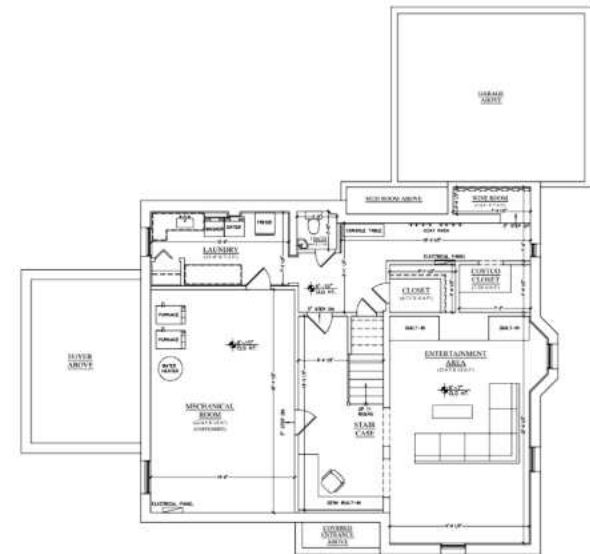
FIRST LEVEL



SECOND LEVEL



THIRD LEVEL



LOWER LEVEL

NOT TO SCALE - This floor plan is provided for illustration purposes only. Room positions and dimensions are approximate and should be independently measured for accuracy.



sueadler  **team**
THE #1 KELLER WILLIAMS TEAM IN NEW JERSEY

kw PREMIER
PROPERTIES
KELLERWILLIAMS.



Sue Adler
Listing Specialist

Cell: 973.936.9129
Office: 973.376.0033 ext.101
E-mail: info@sueadler.com
sueadler.com/25TwinOak