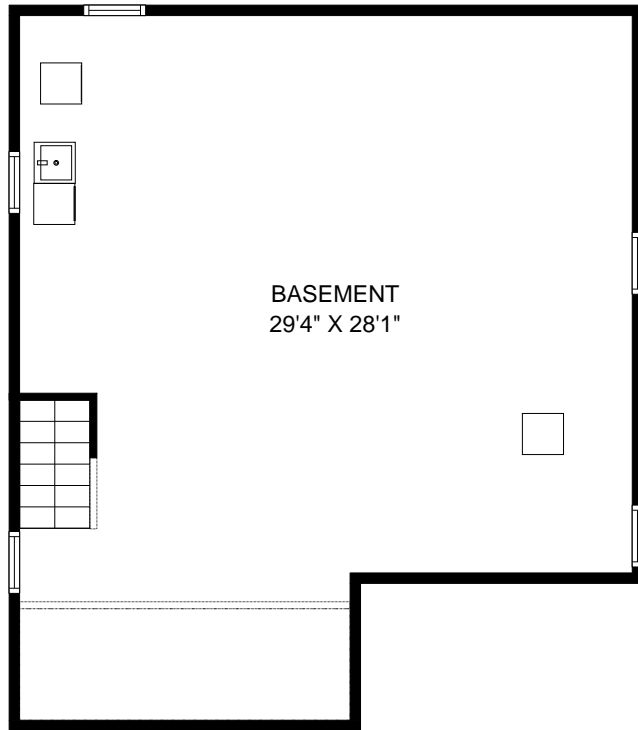


# THE FLOOR PLAN

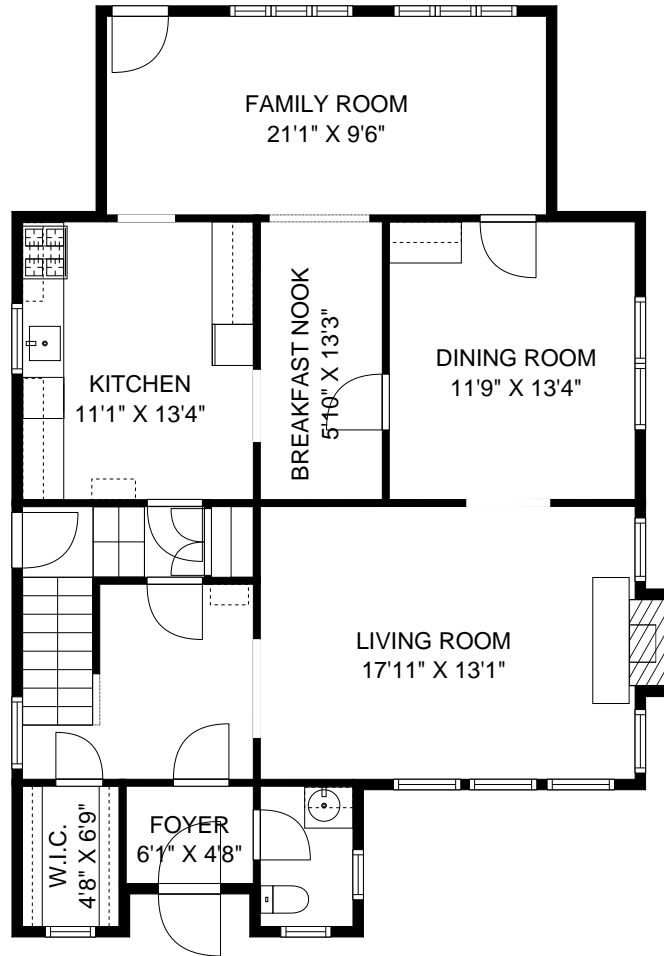
## 39 Irving Avenue

### Livingston, New Jersey



BASEMENT  
29'4" X 28'1"

LOWER LEVEL



FAMILY ROOM  
21'1" X 9'6"

KITCHEN  
11'1" X 13'4"

BREAKFAST NOOK  
5'10" X 13'3"

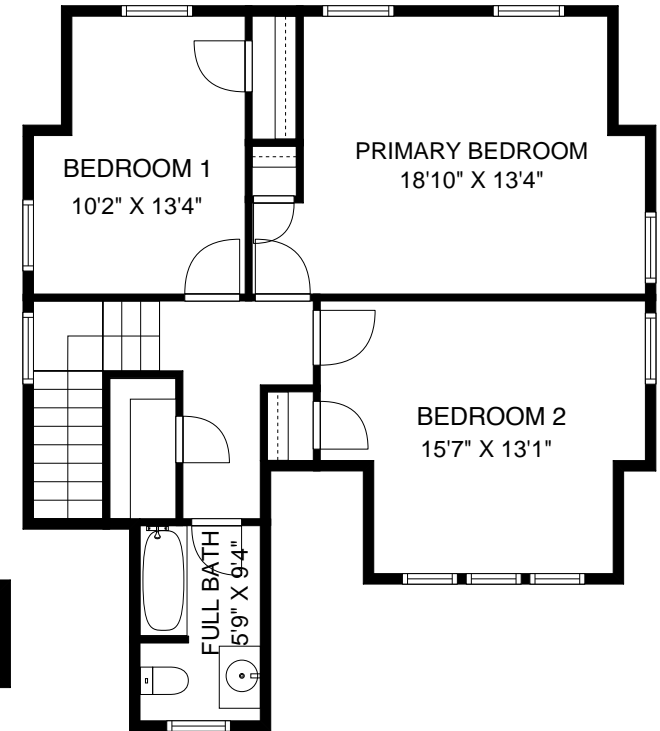
DINING ROOM  
11'9" X 13'4"

LIVING ROOM  
17'11" X 13'1"

W.I.C.  
4'8" X 6'9"

FOYER  
6'1" X 4'8"

FIRST FLOOR



BEDROOM 1  
10'2" X 13'4"

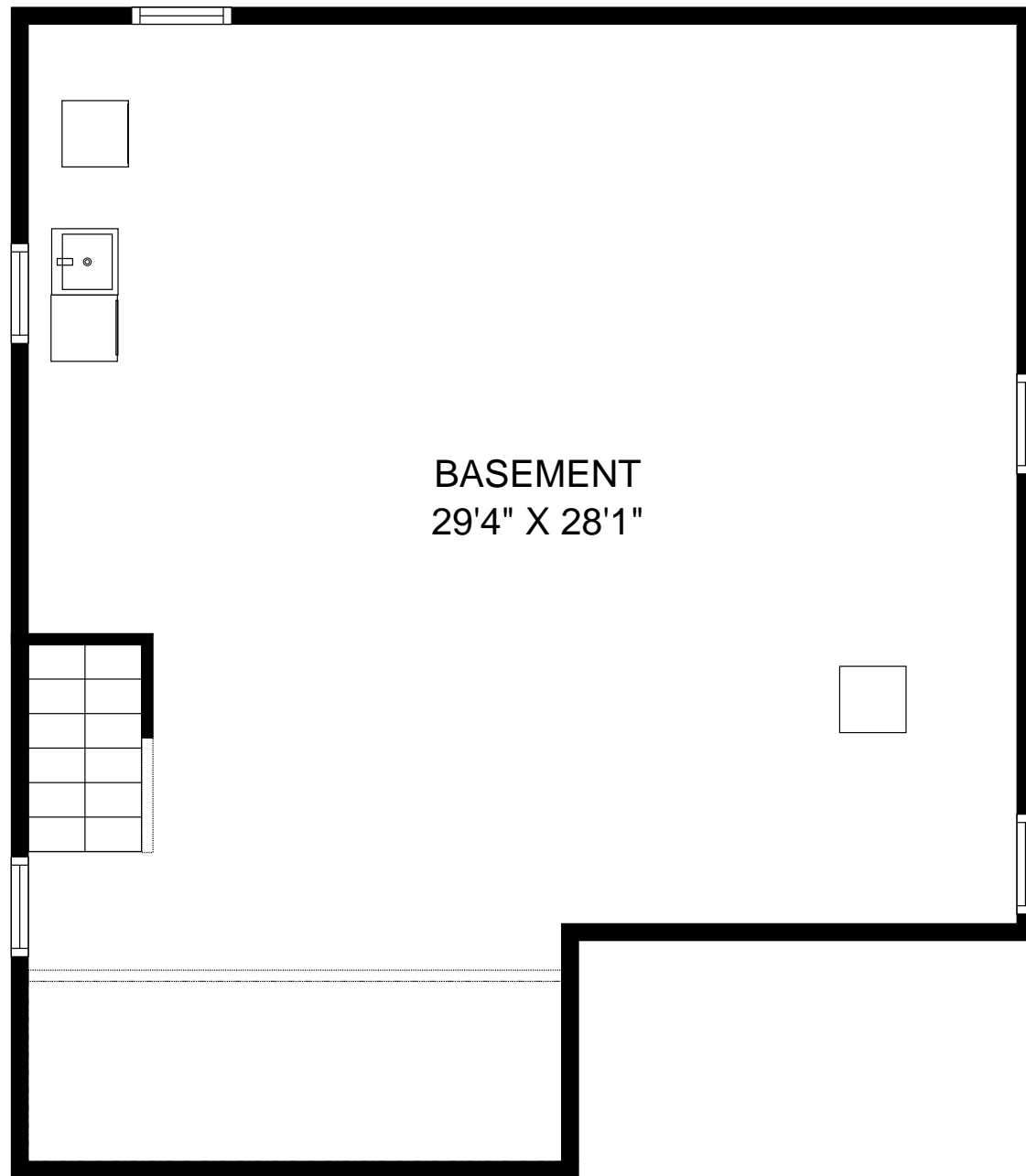
PRIMARY BEDROOM  
18'10" X 13'4"

BEDROOM 2  
15'7" X 13'1"

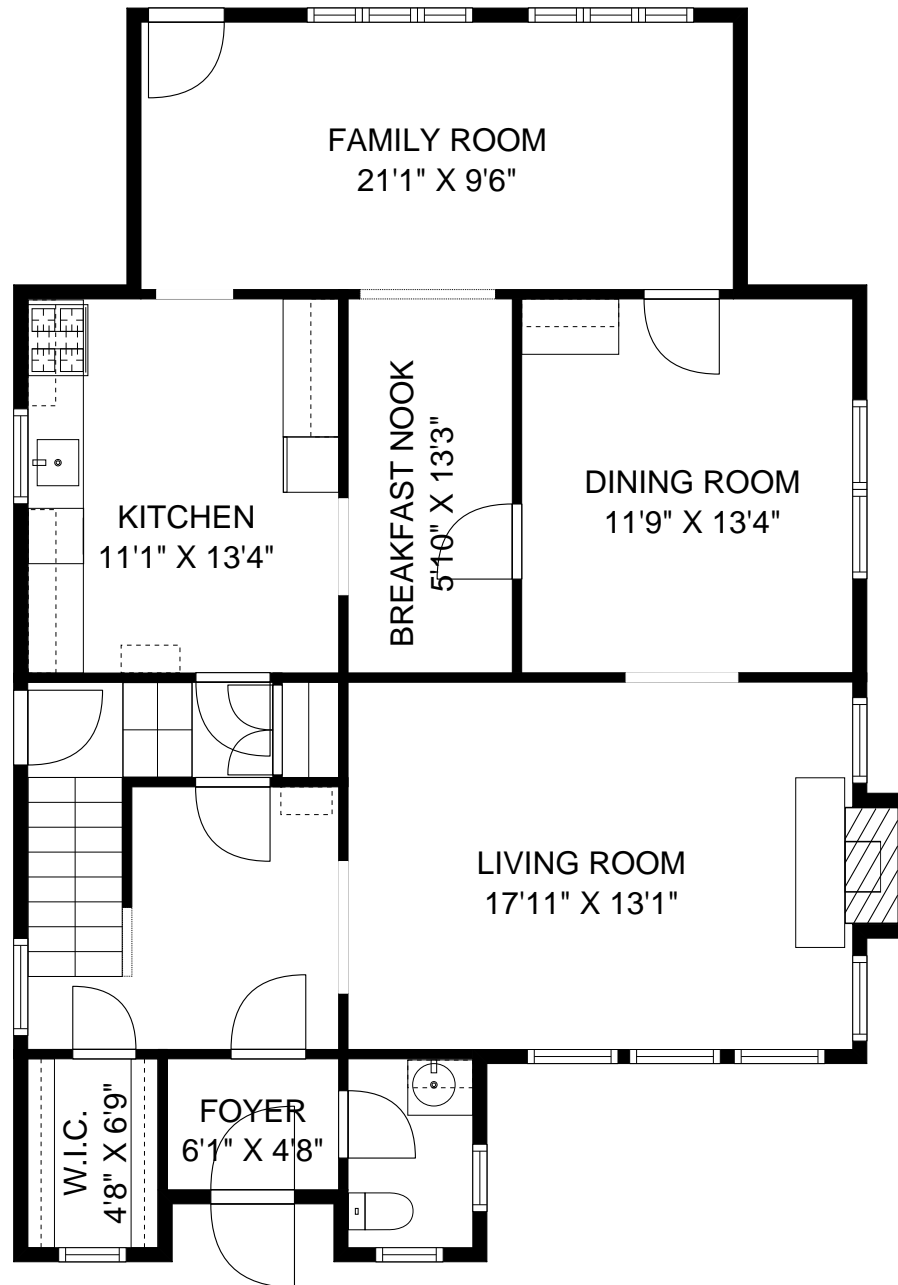
FULL BATH  
5'9" X 9'4"

SECOND FLOOR

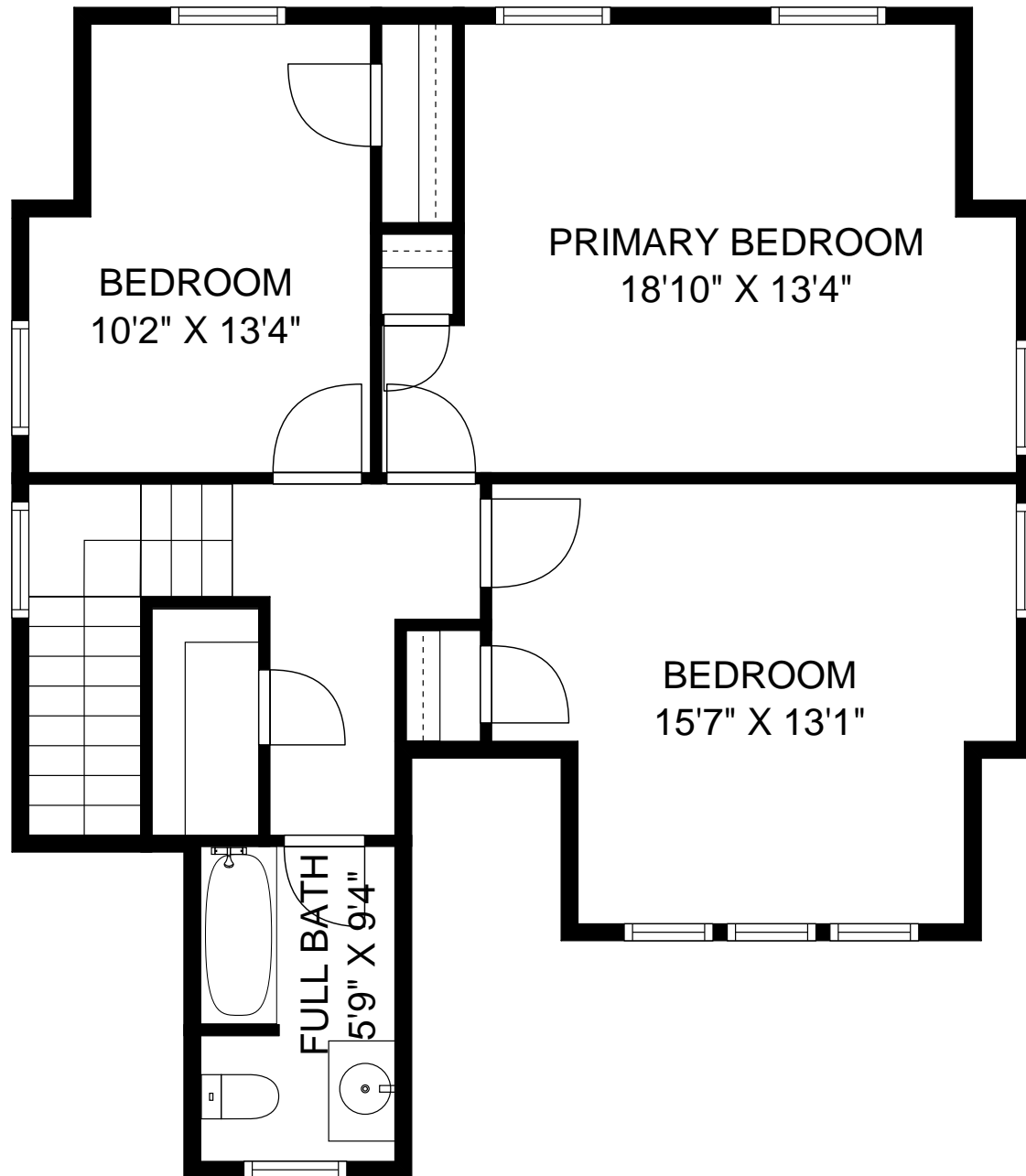
NOT TO SCALE - This floor plan is provided for illustration purposes only.  
Room positions and dimensions are approximate and should be independently measured for accuracy



NOT TO SCALE - This floor plan is provided for illustration purposes only.  
Room positions and dimensions are approximate and should be independently measured for accuracy



NOT TO SCALE - This floor plan is provided for illustration purposes only.  
Room positions and dimensions are approximate and should be independently measured for accuracy



NOT TO SCALE - This floor plan is provided for illustration purposes only.  
Room positions and dimensions are approximate and should be independently measured for accuracy